

Beaconsfield Banner

Vol. 1. No. 6.

Published by the Beaconsfield Progress Association

December 1989

PRES. TED HORTON Ph. 707 1313 SEC. NOEL TONKS Ph. 707 2929 NEWSLETTER CO-ORDINATOR MYRTLE WILSON Ph. 707 2304

Beaconsfield's future at the crossroads

Beaconsfield will find itself part of a population increase equal to the city of Geelong in the area between Berwick and Bunyip by the year 2003 under current planning expectations.

Just how that population is to be accommodated is of vital interest to the current residents of Beaconsfield and district.

The town is at the crossroads regarding its future with the Ministry for Planning and the Environment presenting four different concept plans for future development.

A planning meeting held at Beaconsfield Primary School on November 8th to discuss the proposals was attended by some 60 people.

Representatives of the Upper Beaconsfield Growth Area Committee and residents of Officer also attended the meeting which was chaired by Cr Ted Owen, Pakenham Shire President.

The proposals for growth alarm many residents and great wisdom and careful planning will be needed in the years ahead to absorb the population growth and accommodate different interests.

To discuss the issues involved, the Beaconsfield Progress Association has decided to hold a public meeting next Wednesday 6th December.

The Ministry has submitted four

possible concepts of future growth for community consideration.

The choice of concept will have far-reaching repercussions for the district and every resident.

Copies of the proposals are being distributed to homes throughout Beaconsfield, and we ask you to look at them, think about how each one will effect your family, and come along and join the discussion.

We need opinions from business people, farmers, and other residents to consider which concept appears to be most harmonious to our lifestyle.

Meeting

We hope each group and organisation in Beaconsfield can send a spokesperson to this meeting.

The views of the Beaconsfield community will be submitted in writing to the Ministry and made known to our neighbouring communities in Upper Beaconsfield, Berwick and Officer.

Make it your business to attend.

It will be in the upstairs meeting room at the Squash Centre, Woods St, at 7.30pm next Wednesday evening, December 6th. Supper will be served.

Next Meeting

The next public meeting of the Beaconsfield Progress Association will be next Wednesday 6th December at 7.30pm in the upstairs meeting room at the Squash Centre in Woods St.

SUBJECT: Which growth area concept suits Beaconsfield?

President's Preamble

From the President of the Beaconsfield Progress Association, Ted Horton

As newly-elected President for 1989/90, I would like to publicly record my thanks to past President Albie Jones who did a splendid job in directing our Association through the issues and events of 1988/89.

He will be a hard act to follow.

We are nearing a new decade and fast approaching the year 2000. With this new era we will see a three-fold increase in population enveloping the tiny township of Beaconsfield.

Never before has our Progress Association been more relevant in its purpose to represent the views of the community. Future development, conservation, traffic, services and facilities are the topics of the day. The immediate task now is to write a submission to the Ministry for Planning and Environment on which of the four South Eastern Growth Corridor planning concepts is preferred by this community.

To achieve consensus on this there will be an important public debate on Wednesday 6th December at the Squash Courts meeting room. It is hoped that a submission from the Beaconsfield Community will be well noted by the Ministry.

To make the evening more comfortable, gentlemen please bring folding chairs and ladies a plate.

Hope to see you there

Ted Horton.

Primary school centenary?

Have you registered your name? Mrs Audrey Dobson requests former pupils at Beaconsfield Primary School to register their names and addresses as soon as possible for the school's centenary celebrations next March.

Commemorative glasses, mugs and bumper stickers are already on sale at the school. Glasses cost \$4 each, or six for \$22. Mugs are \$5 each or six for \$25.

The celebrations start at 7.00pm on Friday 30th March 1990 with an Open Day at the school and the launch of the school's centenary book.

The Centenary Fair will be held in the school grounds between 10am and 4pm on Saturday 31st March. That evening there will be a Centenary Dance in the Narre Warren North Community Hall.

A Centenary Service will be held at the Beaconsfield Baptist Church on Sunday 1st April at 10.30am, followed by a spit roast lunch at the school between midday and 1.30pm. The Roll Call will take place at 1.45pm.

Further information is available from Audrey Dodson at the school. Phone 707 1510.



SERVICE &
REPAIRS TO ALL
CARS AND
COMMERCIAL
VEHICLES

BEAconsfield AUTOMOTIVE SERVICES

Michael Perks

Qualified Motor Mechanic

PHONE: 707 4468

Factory 1/94 Princes Highway,
BEAconsfield, 3807

SUPA VALU

BEAconsfield

★ ★ All your grocery
★ ★ needs
★ ★ FREE delivery
★ ★ Ph. 707 1092
★ ★ 'Specials'
★ ★ advertised in
★ ★ Monday's Sun
★ ★ OPEN Sundays
★ ★ till 1pm

See Alan, Emanuel or Lyn
for friendly service

Community Calendar

Please phone details of your organisation's special events to Mrs Mary Perks on 707 4553 for inclusion in February calendar or write a note and put it in the box on the post office counter.

December 1989

8th - St Francis Xavier end of Term IV

21st - Beaconsfield Primary School & Kindergarten's Carols by Candlelight

22nd - Beaconsfield Primary School & Kindergarten end of Term IV

January 1990

26th - Friday 5.30pm Australia Day Celebrations, Civic Centre grounds, Fountain Gate.

February 1990

5th - Monday - Beaconsfield Primary School start Term I

22nd - Thursday - 7.30pm Thinking Day, Pakenham Uniting Church

March 1990

10th - Pakenham Show Day
17th - Beaconsfield Community Fair, Squash centre grounds.

18th - End of Daylight saving
19th - Monday, Beaconsfield Scouts annual general meeting, Scout Hall

23rd - Yakkerboo Ball, Queen Crowning, 7.30pm Pakenham Public Hall

24th - St Francis Xavier College Autumn Fair

30th - Friday - Open Day at Beaconsfield Primary School for centenary and launching of centenary book.

31st - Saturday - Beaconsfield Primary School Centenary Fair 10am-4pm

Evening: Centenary Dance at Narre Warren Nth Community Hall

Calling all Organisers

The Banner wishes to publish news of your group's activities, achievements and adventures. So if you have something interesting, why not share it with the whole of Beaconsfield?

In particular, we urge groups to provide us with details of when and where they meet, and a contact phone number. This is of considerable help to newcomers to our district who may wish to join.

Deadline for the February Banner will be around the end of January, and your contributions could help your club off to a great 1990.

They may be left in the box on the post office counter or please ring 707 2304 and we will be glad to help.

Beaconsfield Community Fair

Yes, it's on again!

For all those who enjoyed last year's Fair with art show, craft stalls, produce, live entertainment, etc, at the Squash Court grounds, please make note now - Saturday 17th March, 1990.

This fair should be bigger and better.

For anyone interested in holding a stall, putting on entertainment, or just helping out, please contact Ted Horton on 707 1313, or Peter Aurisch, Helen Kemp or Noel Tonks.

Birthiswise

The last get together for the year for Birthiswise will be held at Bimblimble Wildlife Park, Paternoster Rd, Mt Burnett, Upper Pakenham next Wednesday 6th december at 11.00am.

Join us for a BYO barbecue lunch and lots of fun. You will find us where you see the balloons. For further information phone Michele on 707 5664.

Birthiswise has recently put together a collection of 'Birth Stories by Peninsula Parents'. If anyone would like a copy, send name and address, \$2.50 plus 70¢ postage to Birthiswise, 5 Clifford St., Frankston, 3199.

The first meeting in 1990 for Birthiswise will be at the home of Michele Leo, 10 Sylvia Rd., Beaconsfield (Ph. 707 5664) at 10.30am, Wednesday 7th February.

Beaconsfield Community Group News

Using your imagination to recycle

Handy hints from parents, grandparents, aunts, uncles and babysitters. (Part of this article has been held over).

When the kids are bored with their toys or maybe you are caring for children and do not have many toys, well why not help them to develop their imaginations with bits and pieces you normally throw away.

e.g. Paper and Cardboard

Keep all the paper that has not been used on both sides, particularly computer paper. Maybe dads, aunts, uncles or friends could start a recycling box at work or school especially in the computer or photocopier room and give to those who would like to use it at home rather than throw it away.

Paper is great for drawing on, covering things with, folding into jets or maybe make your own mobile. Get a book from the library on Origami (paper folding).

How about stapling a few sheets of paper together for the little children in the family for their own drawing book or scrapbook for all

those special picture cut outs they were able to get from the magazines you saved for them.

Cereal, flour, toothpaste, foil, plastic wrap and other boxes are great for covering or painting to make your own city when you play with your cars.

Make buses, cars, trucks, trains from these sorts of boxes. Join them together, add some toilet roll centres to the base for wheels and there you are. Colour it or paste paper and draw windows, etc.

Encourage them to use their own creativity and improve their knowledge of shapes with this butterfly.

Fold out a cornflakes box and on the inside draw a butterfly with different shapes on the wings. With safety scissors allow the child to cut out the butterfly and shapes from saved coloured paper. Paste this to the wings. Thread some wool through the butterfly and you have a mobile for your room.

Playgroup welcomes newcomers

The Beaconsfield Playgroup will welcome any newcomers when it resumes on the first Thursday of Term 1, 1990.

This group has been operating successfully in the area for 12 years and still meets in the Infant Welfare Centre behind the kindergarten in Woods St.

It is run on a casual basis, the main aim being to allow children to learn to play and cooperate with their peers.

An activity is organised each week. At present the children are learning Christmas songs.

The leaders find it also gives Mums an excellent opportunity to get together with others and socialise. It is a particularly good way for new Mums in this area to find new friends and learn more about the facilities available.

Everyone is looking forward to the annual Christmas Party and a visit from Santa. The children are making decorations and cards.

Fees are \$1.00 per week per family; one piece of fruit; drinks are supplied. \$5.50 insurance is optional. The Playgroup meets from 10am to 11.30am.

Market Place

This column invites your two line ads — price only \$2.

For Sale

Honda Express motor scooter 50cc. Good cond. \$600 ONO. Ph 707 4468

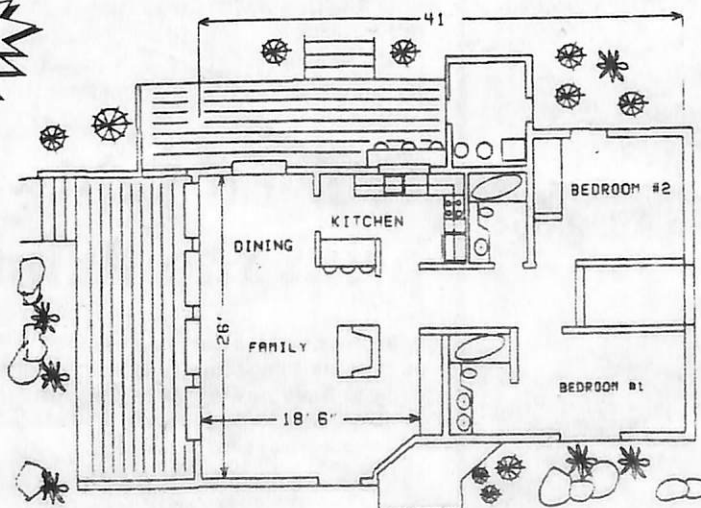
New Panels to suit HJ/X/Z & RHF door. \$250 ea. Ph 707 4554

Falcon XE STD rims as new with caps & nuts. \$100 Ph 707 4553

NEW IN

\$399
CAD

DESIGN
CAD



Affordable, Professional C.A.D.!

BEAconsfield

! SPECIALS !

Starter System \$1799

- XT 640k, 20 Meg H.D
- 101 Key Board
- 14" Mono Screen
- Star NX1000 Printer
- MS DOS, Free Disks & Paper
- Free Software

Whether you're thinking of buying for the first time or an old hand..

Come in...

and talk to the friendly professionals.

PLATYPUS
TECHNOLOGY PTY LTD
TECHNOLOGY TOOLS FOR INDUSTRY

Phone: 707 2302

Facsimile: 707 5376

124 Princes Hwy,
BEAconsfield

**For all outdoor
needs from tractors,
mowers, chainsaws,
brushcutters,
pumps, etc**

**Spares, Repairs & Service
Contact Peter Willis**

**Beaconsfield Mower
& Tractor Centre**

707 5368

**BEACONSFIELD
GARDEN
SUPPLIES**

*For friendly,
efficient service*

- Sand, Screenings and Cement
- Pavers and Terra Cotta Agi Pipes
- Redgum Chips and Pine Bark
- Sleepers (old and new)
- Scoria and Rocks
- Handyman Hardware

**WE CATER FOR ALL BUILDERS,
LANDSCAPERS AND TRADESMEN**

- Deliveries 7 days a week -

"Call in and say Hello"

**94—100 Princes Highway, Beaconsfield
Telephone (03) 707 5144**



Fire Escape Routes

(From Beaconsfield Fire Brigade)

With the continued development of new homes on Mt Misery, some of the recognised fire tracks are disappearing.

Access is still available for fire fighting vehicles but is not recommended for private vehicles, especially Mavis Avenue.

A fire escape route is still available via Hogervorst's property on Vernon Avenue through Les Conkie's property to Holm Park Rd, and also from the end of Vernon Avenue through Holm Park property giving access to O'Neil Rd. These escape routes

will be sign posted before the fire danger season, but we recommend that they only be used as a last resort.

Our recommendation is that residents carry out intensive fire prevention work around their homes so that in time of fire they can safely stay within their own house.

If there is need to escape to a safer area, leave in plenty of time and let a neighbour know you have gone.

Designated refuge areas are St Francis Xavier College and at the Squash Centre in Woods St.

Red Cross report

Those people who have expressed interest in becoming members of Red Cross will be receiving literature from me.

Unfortunately we have had little success through this year in interesting residents in becoming members.

During the summer season, every member will be hoping that bushfires will not threaten our area. We are always seeking additional volunteers to help with catering and registrations of evacuees in any disaster.

The New Year brings with it planning for our biggest fund

raiser within Victoria - Red Cross Calling.

In order to completely cover the Berwick, Beaconsfield and Upper Beaconsfield areas we are constantly on the "look out" for reliable residents willing to work as volunteers for our "Door Knock". The dates for 1990 range over the period March 1st—10th.

May I wish all readers a Happy and Peaceful Festive Season.

Marie Womersley, Publicity Officer, Berwick/Upper Beaconsfield Red Cross. Ph. 707 1103.

Learn a Skill — Help print the Banner

Is there any one in Beaconsfield or close by who would be interested to learn how to operate a small off-set printing press?

The Banner is printed on just such a press and its owner is willing to teach his skills to a local person who could become involved later with the printing of this newsletter.

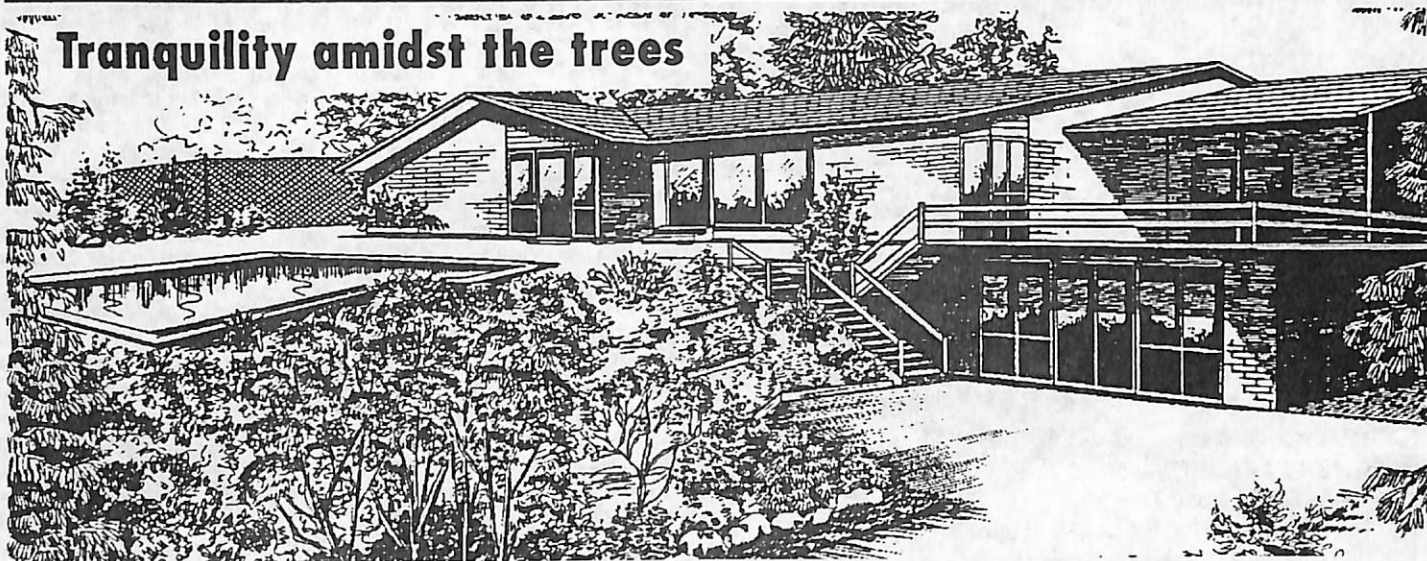
This is a wonderful opportunity for the right person, male or female of any age who is seeking a new hobby, or perhaps the inklings of a new career.

But we emphasise that it is not a project to be taken up briefly and then dropped.

What does it entail?

People with a feeling for art-work and lay-out usually make the best printers, as it is essentially a very artistic business, but there is also some need for mechanical ability, as the press has to be cared for to keep it working smoothly.

Anyone interested to know more is invited to ring 707 2304 and we will gladly answer your questions.

JUDD**REAL ESTATE SCENE****Tranquility amidst the trees**

IT IS not often a property can boast appointments more akin to a luxury resort and remain in reach of most people's budgets.

No. 15 Brennan Avenue, Upper Beaconsfield, is such a property.

Accessed via a gently curved driveway through tree studded lawns, the 14 year old contemporary residence hides much of its features behind a curtain of greenery.

An extensive slate paved deck incorporates formal entry and provides a peaceful

and picturesque outdoor setting. From here a side courtyard formed by native trees reveals a sparkling inground pool of generous proportions.

A plexipave tennis court is also nearby - its maintenance free playing surface ensures both a good appearance and plenty of use. Further outdoor space includes a timber balcony/sundeck with views towards Westernport and over the balance of the property.

Living space is both plentiful and practical with two distinct living zones separated by a spiral staircase.

Upstairs the main residence boasts three bedrooms plus parents retreat whilst downstairs a further two bedrooms all with ensuite facilities form a totally self contained flat with kitchen lounge and laundry.

A rumpus/games room with full length window wall and feature brickwork caters to informal entertainment.

The house is tastefully furnished and complimented by selected Daniel Robertson bricks, terra cotta roof tiles and bronze anodized full length windows.

All in all, a unique and versatile property well worth a look if you have the bug to shift.

To be auctioned on Saturday 2nd December at 2.00 pm, the property may be inspected by phoning Peter Watson at Judd Real Estate on 704 8555, A/H 704 6410.

Ye olde English charm

Reminiscent of a bygone era, this home has been faithfully reproduced and sited to take advantage of the far reaching views.

Located in Narre Warren on a prime one acre allotment, this brand new residence is waiting for your finishing touches.

Whether entertaining or just providing for the growing family, this home has been

thoughtfully constructed. A formal lounge and separate dining room are located well away from the rumpus room (with open fire place and exposed beams).

The full equipped timber kitchen is enhanced by a huge family room which overlooks the rear yard.

Accommodation provides four bedrooms

upstairs plus a study located off the entrance foyer. The master is serviced by a full ensuite and parents retreat. These areas are located to give wonderful views to the north east overlooking the Berwick village.

A huge double garage provides ample car accommodation. From the ornate leadlight panels in the entrance foyer to the cedar

Tudor style windows, this home is a fine example of English tradition.

The property is to be auctioned on 16th December at 12.30pm by Judd Real Estate. Enquiries regarding this property should be directed to the Berwick office on 707 4222 or A/H Joe Hall on 707 5203.

JUDD**REAL ESTATE SCENE**

UP-TRIM 
TONE  **DOWN**

**PASSIVE EXERCISE**

FREE Complimentary
Session (on couches)

OTHER FACILITIES

SOLARIUM - Body Tan

MASSAGE - Relief of aches and stress

FOOT REFLEXOLOGY - Better Health

FACE MASSAGE - The New You



Corner Princes Hwy & Homer St, Beaconsfield
Ring Anne or Kevin (03) 707 2288



Natural drugless healing ensures
reliable results without side effects
Qualified advice and treatment for all
health problems

**Peter N.
Hansen**

Naturopath
N.D. - C.I. - A.T.M.S.

**Beaconsfield
Medical Centre**

Suite 3, 39 Wallace St., Beaconsfield, 3807

Tele.: (03) 707 3892,

A.H. (03) 707 1214

Accredited iridologist, herbalist, homeopath,
nutritionist, tactile therapist. Also for
manipulation and all emotional problems.

Health fund rebates available

Sportstore opens in Beaconsfield

A new era for local sportsmen and women has come with the opening of Peter Warren's Sports World at the corner of Souter St and Princes Hwy.

Peter stocks good quality equipment for numerous sports played on fields and courts, also darts, fishing, golf, skateboards, and bicycles are a speciality... everything from toddlers' learner bikes to full-size in many colours.

Peter is very safety conscious and concerned about the wearing of helmets by bike and skateboard riders. He stresses the importance of letting a person choose the type of helmet they find most comfortable so that it will be worn regularly.

Some adults do not realise how hot a head feels inside a safety helmet. There are several types with different sized air holes. If a parent forces a child to have a helmet he/she doesn't like, it may only be worn between the house and the street, then taken off and allowed to dangle from the handle bars — useless in an emergency.

A red flag flying on a small child's bicycle is a good precaution. Its height gives a car driver some warning of the child before the

bicycle comes into sight.

Peter also has a warning to older people about skateboard riders. Don't panic if you see one approaching you. Most have good control over their sets of wheels, and will steer a course safely around, providing you don't run out in their way at the last moment.

The sale of sports knives is another concern to Peter. He won't sell knives to children without first ringing their parents and gaining consent.

He stocks colourful clothes, footwear and hats for many sports and spectators. Gardeners and farmers are catered for too with overalls and working boots.

There are detailed VicMaps for hikers, four-wheel drivers, and fishermen, and a wide range of camping gear, including Dacron sleeping bags, lamps and lanterns, and cooking equipment.

Peter has a great love of the bush and takes part in the Puffing Billy Fun Run, which he finds is a wonderful way to meet other outdoor enthusiasts, as they chat away to each other going along the hilly roads in the Dandenongs.

He is also a referee with the Victorian Soccer Federation.

Hints from Mother Nature's Corner

In the last issue of the "Banner", it was suggested that some plants could be allergic to certain individuals, however, it is an accepted fact that various plants can be repelled or attracted to other varieties.

For instance, quite by accident, a few cloves of old garlic were thrown onto a pot containing a miniature rose. It had always been a daily ritual to destroy the invading green fly, and it was a great surprise to discover the population so depleted it disappeared!

Garlic sprays had always been used on the fruit trees, but why not grow the cloves, and other bulbs of the onion family beneath the trees? It proved a successful experiment.

So many lessons are taught by simple observation. trial and error brought their own results. Whilst roses grew larger and sweeter per-

fumed flowers with their sulphur giving neighbours, carrots wilted and produced their apologies for their harvest. Yet carrots and cabbages thrived when planted near tomatoes, but potatoes became dwarfed.

One plot on which a bed of nasturtiums had flourished deterred aphids from nearby sprouts, and a bed of marigolds (calendula NOT french) dug well into the soil prepared a "disinfected" base for early green vegetables, but not for potatoes.

All legumes are companion plants to carrots, and chives under peach trees will prevent leaf curl, also leaf scab under apple trees. Nasturtiums in the greenhouse will deter white fly.

Discover for yourself and spend a little time with Mother Nature.

December in your garden

This month in your garden is so exciting.

Lawns must be given a little extra care this month to survive the summer heat. Raise the blades for a higher cut. Aerate the lawn to allow water and fertiliser to penetrate to roots.

Mulching is the best means of saving water. You can use grass clippings, saw dust, pine bark, pea straw, straw, but make sure they are well decomposed. Materials like sawdust can kill a plant if not rotted enough.

Cuttings can now be taken from daphne, lilac, garrya, elliptica, magnolia, carnation and marguerites. Strike the cuttings in a mix of four parts sharp sand, to one part peat moss and cover with a plastic bag to cause a hot house effect.

Annuals that were planted in November should be nipped back if they are growing too tall or show premature flowering. If your garden is in a hot situation you need sun-loving annuals like petunias, amaranthus, celosias portulacas, marigolds, zinnias. Try to water your annuals by a soaker hose or some underneath watering.

by Lisa Robinson,
Associate Dip. Student,
VCAH Burnley

If annuals are watered from overhead they tend to become flattened and flowers do not last long.

Vegetables to be sown this month are dwarf and climbing beans, pennlake or great lakes lettuce, button squash, celery, cucumber, zucchini, pumpkin, sweet corn, cabbage, cauliflower, tomatoes, capsicum.

PLANT OF THE MONTH —

Ginko or Maidenhair Tree
(Ginkgo biloba)

Height and wide at maturity — 25m x 8–10m. Primitive deciduous conifer, narrowly to broadly cone shaped. Old specimens have a weeping habit. No flowering. Generally disease free.

Tolerances: light, sun, semi-shade; wind - average, drought - average, winter - cold to -30°C; water logged soil - average; pH - complete range.

Very attractive tree with lots of character but try to avoid seed raised trees which may turn out to be female.

BEACONSFIELD LODGE MOTEL

PHONE 707 1454

1 Souter Street, Beaconsfield

Modern units in a quiet garden setting. Facilities include colour TV, phone in all rooms, fridge, ensuite bathrooms, electric blankets, heaters, fans, clock radio, tea and coffee making facilities. Restaurant and playground opposite motel. Shops and hotel within 500 metres

◆◆◆ RACV RATING

Beaconsfield Meat Supply

Sell Only Top Quality Meat
"And that's no bull"

Spit hire 707 1163

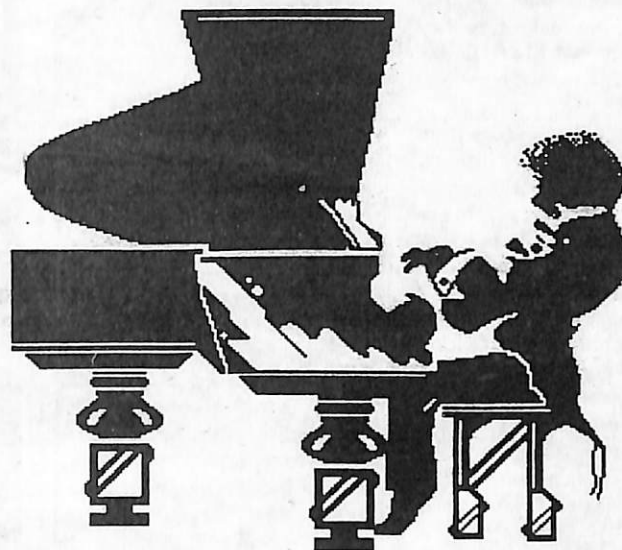
Roaming Roast Spit Roast Catering —

For your next party or function,
call the Roaming Roast and let us be your host

Ph. 707 1163

**Whether you're building a
house, a patio, a garden shed,
or even a grand piano...**

For Friendly
and
Personal
Service



**BEACONSFIELD TIMBER
AND**

HARDWARE Pty Ltd

Lot 2 BEACONSFIELD AVE, BEACONSFIELD

707 5055 (5 LINES)

OBHW, PINE, OREGON, K.D MOULDINGS
A/C SHEET, REDGUM, FENCING MATERIAL
FIBREGLASS SHEETING, TREATED PINE
FLOORING, HARDI PLANK

**WE CAN ALSO PROVIDE A LARGE
RANGE OF HARDWARE FOR THE
HANDYMAN AND PROFESSIONAL**

PLEASE CALL IN AND LOOK AROUND