

Beaconsfield Banner

Vol. 6 No. 2

Published by the Beaconsfield Progress Association Inc.

April 1994

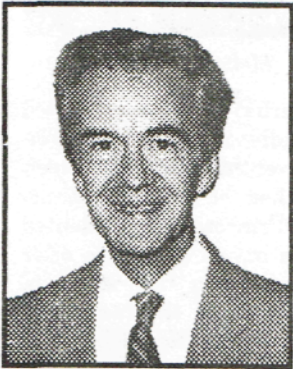
NEWSLETTER CO-ORDINATOR TED HORTON Ph. 707 1313 ASSISTANT MARGARET BOON 707 5053
ADVERTISING CO-ORDINATOR TONY RUSHTON Ph.707 1765 BANNER POSTAL ADDRESS P.O. BOX 217 BEACONSFIELD 3807



Shire of
Pakenham

What's Happening at Council

by Councillor Keith Ewenson J.P.



Keith Ewenson,
McBride Rd.,
Beaconsfield Upper.3808
(059) 44 3372

OUTSTANDING SERVICE REMEMBERED

On March 27th the Cardinia Creek Reserve at Beaconsfield was named "The Bob Burgess Reserve", acknowledging the outstanding contribution Bob made to the community.

RELIABLE SOURCE

The following details are prematurely released now so that through the good circulation of this paper, people may be informed of pending events which occur prior to the next edition of the Banner.

MUNICIPAL RESTRUCTURING

"To Be Or Not To Be."

The council suspects two enquiries affecting the Shire may be announced April/May into possible boundary changes. The government has embarked on a programme of reviewing local government boundaries throughout the state. It may be that you would be delighted by the thought of a takeover; or on the other hand, you may appreciate the no frills approach "Down to Earth" style,

that has enabled us to hold the lowest rates of all our neighbours. As a Council, we will be working to maintain the Pakenham Shire. The Shire is extremely attractive in many ways, we know this, and so do the potential assailants - Melbourne growth corridor picturesque location - high performing Council. No doubt any "grab" for a part of Pakenham Shire would substantially be motivated by our strong financial position.

Do you consider we should work towards maintenance of the Shire? Have we your support in this challenge?

OPENING CEREMONY FOR NEW BEACONSFIELD PARK.

On Sunday 27th March, Beaconsfield's new community park the 'Bob Burgess Reserve' was officially opened. The ceremony at 3.30 pm was held in bright warm Autumn weather. Over 250 people attended. Bob's relatives, friends, Shire of Pakenham officials, Fire Brigade members, District captains and Progress Association people were present.

Mr. Ray Canobie, the Acting Chief Executive of the Shire of Pakenham opened proceedings. He introduced guest speakers from the Progress Association and from the Beaconsfield Fire Brigade.

Association President Ted Horton outlined how the formation of this park happened and how this great community asset should be so appropriately named after Bob Burgess. He was a prominent person within the local community. Fire Captain Ron Woodfine elaborated on Bob Burgess' qualities as a leader and a friend.

Councillor Peter Meeking, Shire President of the Shire of Pakenham then officially opened the Park. He unveiled the new Bob Burgess Reserve sign together with Bob's widow Bev.

Cont. on Page 5



Above: Bev Burgess and Shire President Peter Meeking unveil the name of Bob Burgess Reserve.

NEXT PUBLIC MEETING OF THE BEACONSFIELD PROGRESS ASSOCIATION

7.30pm WEDNESDAY 27th APRIL, 1994.
At the Beaconsfield Community Centre.

"MUNICIPAL RESTRUCTURING POLICY FOR BEACONSFIELD."

A discussion meeting to present the views of residents for the Minister of Local Govt.

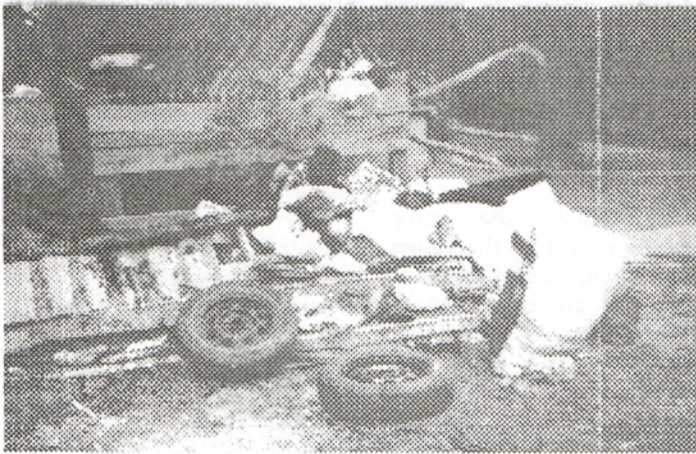
WHAT A LOAD OF RUBBISH!

On Sunday March 6th Beaconsfield locals 'Cleared up Australia' (albeit a small part). Six helpers from the Beaconsfield Progress Association filled four big sacks with rubbish from behind the Taco Bill and Pizza Shops. A spokesman said that the quantity of rubbish was not too bad but the amount of broken glass around the barbecue area was amazing.

The Beaconsfield Baptist Church group however found that five big bags were far from enough for the amount of rubbish that they cleared along the Emerald Road between Payne Road and Princes Hwy. The Beaconsfield Flora

and Fauna Reserve yielded vast quantities of old building materials, car parts and take away food containers by the score. The Church group resorted to filling a truck with rubbish soon after the bags were filled.

In the short time of collecting, the two groups gathered a big quantity of waste. With more time and volunteers many more areas within Beaconsfield could have been cleaned up. Let's hope for more support from more groups next year to clear up other areas such as Kenilworth Ave., The Railway Reserve and along the Old Princes Highway.



Above: Some of the rubbish collected by the volunteers.

BEACONSFIELD PRIMARY SCHOOL FETE.



Many attractions have been added this year, including Fairy Shop display, model train display, absailing wall, horseshoe throwing, nail driving, kite flying and making, mechanical surf board, Harley Davidson rides and lots more.

Come along enjoy a great day and support your local school.



Beaconsfield Primary School is yet planning an action packed day at their fete which will be held on SATURDAY 21ST MAY, starting at 9.30 am and ending with a barbeque tea and fireworks in the evening.

BEACONSFIELDS' YAKKERBOO PRINCESS ENJOYED THE FESTIVITIES.

Dear Mr. Horton,

I would like to thank you and the other members of the Beaconsfield Progress Association for the chance to be part of Miss Yakkerboo for 1994.

I appreciate the support you gave me with organising sponsors to do my hair, make-up and nails which helped make my night much more enjoyable. The donation towards the dry cleaning of my dress was also appreciated.

Although I was not successful in becoming the Yakkerboo Queen for 1994, I had a wonderful time being part of the festivities.

Firstly, I had to attend an information night for all the entrants of Miss Yakkerboo. It was there that we all received notices of all Yakkerboo events that we could attend. We were also notified of the judging night where three judges interviewed us individually. They were curious of our hobbies/interests, background and knowledge of the Pakenham Shire and it's Council. This went very successfully as the judges were all nice people and helped us to relax and have a very enjoyable conversation. It was from this interview that the judges made their decision.

I then attended the Yakkerboo President's Art Show at the Pakenham Racecourse on Friday 18th March, to help with the roses and drinks for the occasion.

The following week I attended the Yakkerboo Ball at the Pakenham Hall. This was a very successful night with all nine entrants being well represented but very nervous. We spent the beginning of our night greeting guests who were all formally dressed for the occasion. Then when dinner was served the Princesses got a chance to sit with friends and family and enjoy the meal and to get up and have a dance to the live band.

It was after dinner that the Queen was announced. Miss



Above Melissa Perks.

Yakkerboo of 1993 presented the audience with a speech on her eventful year as Queen and then it was our time. Each Princess was presented with a bunch of flowers after walking down the centre of the room with the escort and a brief description of her personality being announced. We all stood anxiously on stage awaiting the Shire President, Mr. Peter Meeking, to complete his speech, for the judges to arrive on stage and announce their decision. It was finally revealed that Miss Guys Hill, Tanya Bailey, was the successful entrant for Miss Yakkerboo 1994. A huge congratulating applause filled the hall when she was crowned and the regal robes draped on her.

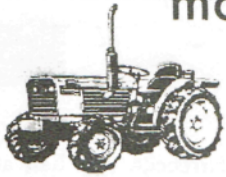
Miss Yakkerboo 1994 made a brief speech and then we all enjoyed the rest of the evening with raffles, prizes, dancing, eating and enjoying ourselves.

The following Sunday, 27th March, was the Yakkerboo Parade at Pakenham. Miss Yakkerboo and the Princesses were in horse-drawn carriages in the procession.

Again, thankyou for the opportunity to not only be part of the Yakkerboo festival but also to be a representative for Beaconsfield.

Ed. Well done Melissa you were a worthy representative

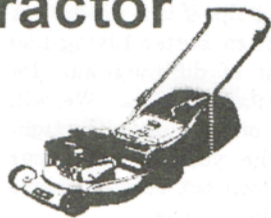
For all outdoor
needs from tractors,
mowers, chainsaws,
brushcutters,
pumps, etc



Spares, Repairs & Service

Contact Peter Willis

**Beaconsfield
Mower & Tractor
Centre**



707 5368



**BERWICK
AUTO
ELECTRICS**



3/94 Princes Hwy Beaconsfield
Telephone: 796 1550

**Complete Auto Electrical
Service, Change Over
Units. Discount Batteries
Truck and Machine Wiring**

Also at:
29 Enterprise Ave
Berwick Ph: 707 3617



Presidents Patter.

(Beaconsfield Progress Association)



Ted Horton

Victoria is going through big changes with its municipalities. The State Government intends to save the State millions of dollars each year by amalgamating City and Shire Councils. Also Council boundaries may be altered.

It is only rumoured at this stage that Beaconsfield may be affected with change as Councillor Keith Ewenson has indicated.

However, the Progress Association has been searching for some tangible evidence that we might change, but without success. The Association has been recommended to seek out views of local residents about what they think if Beaconsfield was annexed by an adjoining Council. The majority view can then be presented to the Minister for Local Government.

The questions we need to ask ourselves are:-

1. What is the State Government hoping to achieve by amalgamating Councils and moving boundaries?
2. Could our rates change?
3. Will the maintenance of our roads and community facilities continue unchanged?
4. Will we have similar access to Council representatives in the future?

While nothing is certain at this stage, the Committee of the Progress Association feel it is necessary to give the topic a public airing. The rate of change may well be rapid and we, the community, want some say in the management of our municipal affairs in the future.

Whatever else, we have to be positive that the intentions of the State Government are to save us all money in the long term without the standards of local government deteriorating.

Please come to our Public Meeting on **WEDNESDAY APRIL 27TH** to air your views and listen to the views of others.

RED SHIELD APPEAL 1994

The Salvation Army is appealing for more collectors this year in the Beaconsfield Area. The collection weekend is Saturday 21st and Sunday 22nd May and the area Co-ordinator is Ted Horton. He can be contacted on 707 1313.

The areas that need extra coverage with collectors include Mount Misery, Holm Park Road, Central Park, and South of the Highway.

It was noted that in 1993 a reasonable amount was collected by a small group of people. With the services of the Salvation Army being in greater demand than ever in 1994, Beaconsfield ought to

be able to collect a larger amount with more in the team.

If you are feeling charitable and wish to support a very good cause, collecting in your immediate vicinity will take no more than 2 or 3 hours of your time. Each household is notified before the day with mailouts and an extensive advertising programme in the National media. From past experience collecting is easy and most people give generously.

Please help this worthy cause if you can by donation of money or better still by volunteering to become a collector.



Beaconsfield Community Centre Inc.

P.O. Box 2 Beaconsfield. Ph. 707 3449

BEACONSFIELD COMMUNITY CENTRE

(written by Sue Bailey)

NEW COURSES AVAILABLE AT COMMUNITY CENTRE.

The term 2 programme has been distributed throughout Beaconsfield, if you haven't received a copy please pick one up from the centre or they are available from the Post Office and Milk Bar.

Regular groups have begun well this term and include Midway (for the over 50's), GiGong (adapted from Tai Chi), Walking Group, Artists Group, Railway Group. The groups offered for parents with young children always are well attended and new members are always welcome.

We have many new courses being offered this term both day and night. Dried flower craft, Raffia Hats and Baskets, Paper Tole, Patchwork, Amish or Folk Dolls, Microwave Cooking, and an eight week course in Upholstery.

The Aromatherapy & Massage course proved so popular last term that there will be another 4 week course running at night and a special workshop is to be held on a Saturday. This is designed specifically for couples. The popular Antique workshop is also planned for the end of April.

A new course in Creative Writing is being offered on a Thursday evening and this will run for 6 weeks.

As well as these courses there will be an afternoon with Gwyn Bynion to informally discuss positive parenting and a luncheon at Dandenong TAFE college is planned for the end of May.

If your interested in attended any of the courses, or would like to see something in particular offered, ring Sue at the centre - 707 3449.

COMMUNITY CENTRE - 2 YEARS OLD.

At the end of May the Beaconsfield Community Centre will have been opened for 2 years. The community gained a great facility for regular groups and courses for the community. It is a great meeting place and many new friendships have been made.

VACANCIES STILL AVAILABLE FOR PRE-KINDER

If you have a child who will turn 3yr. before the end of June we still have positions available for our Pre-Kinder.

SESSIONS

This session is held on Tuesday morning 9.15 - 11.15 am. Gill our Childcare Directoress provides a great morning of fun activities for the children. For further information or enrolments, ring the centre - 707 3449.

TAKE - A - BREAK

If you need a break without the children, for whatever reason eg- appointment, business or perhaps a course at the centre, then we can offer care for your children in a safe and friendly environment.

Bookings are necessary for either of the occasional care sessions. Ring the Community Centre - 707 3449 Sessions available - Tuesdays 12.30 - 3.30pm - Thursday 9.15am - 12.15pm

MIDWAY NEWS

(Written by Iris E)

Sometimes we read things which do not ring true, but the message on the front of the Beaconsfield Community Centre Programme is true in every way. "There are not strangers just friends we have not met." Our Midway group is just that with many more friends joining.

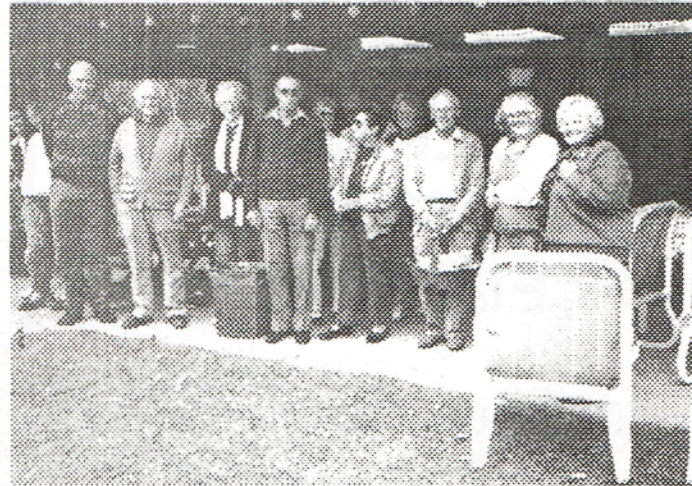
Elizabeth from the Pakenham Shire came to tell us about the many ways the Shire helps if it is needed. A lady from Better Living had a host of differing aids for Arthritis sufferers. We will have other guests throughout the year to make our afternoon out very enjoyable and informative.

A great barbecue was had at Doreens on the public holiday and yet another is planned.

There is still time to join us for a trip to Werribee on the 26th April. Gwen is the lady to contact.

Our carpet bowls teams are getting a lot of practice in for Winter, so if you are a Jack Hi lover, join us and keep your hand in for next Summer.

So as you can see we enjoy a variety of events. We welcome new members anytime. Just come to the centre on Monday afternoon 1-3 pm.



Midway group enjoy a B.B.Q. at Doreens.

ANNOUNCEMENT

The wedding of Susan Horton to Mick Desailly took place on Saturday 9th April at the Old Berwick Cheese Factory. The reception followed after at Upper Beaconsfield Community Hall. The couple went for a 10 day honeymoon in Cairns. They will be making their home in Tocumwal, New South Wales.

CONGRATULATIONS

This man has just become an Australian citizen



LOCALS TO PEDAL 520KMS. FOR CHARITY

At the time of writing, four local bicycle riders are training for a 24 hour relay marathon from Echuca to Port Fairy (Murray to the River Moyne).

This event is held annually and this year over the Anzac weekend from 12 noon Saturday 23rd April to 12 noon Sunday 24th April. Willem Boon, Brendan Rice, Jason Martin and Ted Horton are participating in the 520Km Classic. Ralph Smith, Joan Horton and Glen Cant are in the support team.

The aim is to raise money through sponsorship for a health related charity. This year the four will be raising money for Camp Quality Children with Cancer and Dandenong Palliative Care group.

The route will take the intrepid peddlers from Echuca to Charlton, St Arnaud, Ararat, Dunkeld and into Hamilton. To ride 520kms in 24hours the team must average 22 kms per hour. The Beaconsfield teams will aim to average 30kms per hour and gain four hours well earned sleep in Hamilton (usually on the floor of the Showgrounds pavilion.) The team will then ride out at 8am in the full light of day to cruise the 90kms stretch downhill into Port Fairy.

The ocean will be a welcome sight for the saddle sore finishers. The teams will then recoupe their lost energies with an overnight celebration on Sunday. On Monday they will ride in comfort back to Beaconsfield in the soft seats of the Upper Beaconsfield Community Bus.

OPENING CEREMONY FOR NEW BEACONSFIELD PARK.

Cont. from Page 1

Peter strongly emphasised Bob's community involvements in his speech and spoke of Bob's dedication to his work, his wife and family and his service to the community especially through the Fire Brigade.

Mrs. Bev Burgess responded with thanks to all concerned with tributes to Bob's fine qualities as a family man. In reflecting on her sister in laws sentiments Bev finished by saying Bob was " simply the best".

At the close of ceremonies many photos were taken and everyone stayed on to enjoy afternoon tea supplied cour-

tesy of the Ladies Auxillary of the Beaconsfield Fire Brigade.

The Beaconsfield Progress Association Shire of Pakenham for organising the opening ceremony and the Fire Brigade Auxillary for providing afternoon tea.

Now that the park is formally recognised and named it is a peaceful, natural haven for the whole community to visit and enjoy. It is hoped that it will be treated with respect by all users and preserved in its natural state so as to maintain the semi rural character of the township of Beaconsfield.

THANKS

Joan and George Armitage wish to say 'Thank you' to the Midway group for their kind wishes during our "down" period. We're climbing up and our thoughts join you every Monday.

EXCLUSIVE FERNS

COFFEE
&
CRAFT SHOPPE

Enjoy a Capuccino, snack or light lunch in our new Coffee Shoppe whilst browsing through our large range of gifts and crafts including dried flowers, backing boards for your wall hangings, craft glue, dry foam oasis, papier mache boxes for you to decorate.

We also stock a great selection of locally made items for that special gift.

Open Tues to Fri 10am. - 4.30pm. Sat 9am. - 4pm. Sun 11am. - 2pm.



Nature heals with natural remedies. Drug free treatment ensures reliable results without side effects, in acute or chronic illness.

*Beaconsfield
Naturopathic Clinic*

Peter N. Hansen

N.D. DIP. HOM. C.I. A.T.M.S.
NATUROPATH - HOMOEOPATHIC
MEMBER OF AUSTRALIAN FEDERATION OF HOMOEOPATHS.
MEMBER OF INTERNATIONAL FEDERATION OF
HOMOEOPATHIC PHYSICIANS.
MEMBER OF AUSTRALIAN TRADITIONAL MEDICINE SOCIETY

**Beaconsfield
Medical Centre**

Suite 3, 39 Wallace St., Beaconsfield, 3807
Tele.: (03) 707 3892, A.H. (03) 707 1214

Qualified Iridologist, Herbalist, Homoeopath (classical), Nutritionist, Tractile, Therapist, Massage, Bach remedies & Bush Flower Essences.

Special interests: Emotional & Behavioural problems.

KEN BRYAN 707 3864

K.B. TRANSMISSIONS

Automatic Transmission
Specialists

31 ENTERPRISE AVENUE.
BERWICK, 3806

K.B. TRANSMISSIONS

Automatic Transmission Specialists

**31 ENTERPRISE AVE.,
BERWICK**

PHONE 707 3864



**A TIMELY NOTE FROM PAKENHAM
CITIZENS' ADVICE BUREAU inc.
66 MAIN STREET, PAKENHAM.
3810. TEL. (059) 41 2377.**

**C.A.B. - PROVIDING
INFORMATION**

Yes, your citizens Advice Bureau in Pakenham is your "Know-All Bureau." Well we try to be and what we don't have on hand we will certainly do our best to find out for you. Our Volunteers are trained to keep you informed and show you the options available in all kinds of situations. They will help to get knowledge of things you have trouble locating for yourself - help you to fill in forms if they bother you and when necessary arrange for referrals for professional services.

An enquiry which often comes up is about a Power of Attorney. This can be given to someone you trust to attend to your affairs should you go interstate, overseas or become hospitalised and is a "General Power of Attorney".

An "Enduring Power of Attor-

ney " is just that - enduring - and is intending to provide an inexpensive method by which a person can give power to a person of their choice to manage their affairs. This would remain effective should they suffer loss of capacity to physically or mentally attend to matters themselves. One thing you must be aware of is that this "Power" must be executed while they have the required mental capacity to understand the powers they are conferring at the time of signing.

Like Wills, a Power of Attorney needs a great deal of thought and it is wise to attend to them before it is too late.

For further information and pamphlets contact the Pakenham Citizens Advice Bureau at 66 Main Street, just up from the John Street roundabout, any Monday to Friday 10.30am - 2.30pm. Phone (059) 412377.

RAINFALL IN BEACONSFIELD

(Written by Dr. R.C. Webb)

Since my last report on 26th November 1993 (Banner Vol 5 No 6 of December 1993) we have again encountered variable rainfall.

1993 concluded with a burst of 132.1mm in December. This was mainly due to 36.5mm on the 12th and a further 74.8mm for the 4 days 27th - 30th December. Despite the high monthly rainfall, there were only 9 days of rain for December. This gave a total yearly rainfall of 878.1mm for 1993. Higher than average but not approaching the 939.9mm for 1992.

1994 Rainfall figures:- January rainfall was 44.5mm with 9 days of rain. - February rainfall was 119.6mm with 11 days of rain. - March rainfall was 23.0mm with 7 days of rain.

years with a total of 296.2mm, all falling in only 29 days of rain.

As well as a high monthly total, February was notable for the highest 24 hour rainfall for many years, 57.3mm fell on the 11th February. The next highest in the past 10 years was 50.0mm on 20th November 1992.

There were two interesting features on the March 1994 rainfall. Firstly the lower than average rainfall of 23.0mm and secondly the 14 day period without any rain from 18th to 31st March (also associated with higher than average temperatures).

The following points on rainfall readings may be of interest to readers.

AKOONAH PARK - BERWICK -

*Produce, Trash &
Variety Market*

EVERY SUNDAY

Opens 8.30 am. to 1.30 pm.

**OVER 140 STALLS INSIDE
AND MORE STALLS OUTSIDE**

CAKES * HOUSEHOLD GOODS * CLOTHING
JEWELLERY * CRYSTAL AND DINNER SETS
PLANTS * CRAFT * FRUIT AND VEGETABLES

**PHONE BOOKINGS ON
707 3103**

Keogh's Pharmacy OPEN 7 DAYS A WEEK

**Mon. - Fri. 9am. - 6.30pm
Sat, Sun. 9am. - 1.00pm
Public Hol. 9am. - 1.00pm.**

**Public Fax Service 796 1645
for
HOME DELIVERY**

Agent for:
MEDIBANK PRIVATE
A.N.A.
LATROBE
COTY COSMETICS
CONSTANCE CARROL
AUSTRALIS
FRENCH PERFUMES

707 5187

Invalid Equipment for Hire
or Sale.
Ear Piercing
Pregnancy Testing
Photocopy Facilities
Fax Facilities

Agent for: KODAK
24 exp film \$7.95

Reprints 1/2 Price for 10 or more
1/2 price Enlargements : 20 x 25cm

WEATHER AND WINE

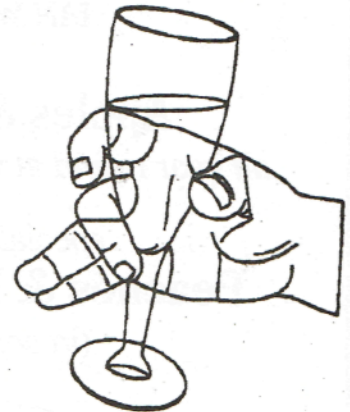
(Written by K. Goodman)

At last, smiles are appearing on the faces of Yarra Valley winemakers, they have a better than even chance of harvesting the grapes of the 1994 vintage. Normally by this time (11th April at writing) vintage is close to completion but this year is one of the latest since the early 1970's.

Mid March when vintage normally starts saw the usual scene of early morning pickers working through the vines, replaced. In their place were the busy hands of leaf pluckers providing freedom for air to flow through the vines. Their aim was to stop the onset of mould which started to flourish in the cool damp days of this season.

At Yeringberg near Coldstream, where my wife and I have picked grapes for 20 years, the Pinot Noir and Chardonnay have been crushed, sugars are good, flavours OK but acids high, 9GM/Litre. If the weather remains cold as it is, this weekend, then some vineyards may lose all or part of their crop through either un-ripe fruit or rot.

Winemaking can return rich rewards, both monetary and to the soul, but one bad year such as 1994 nearly was, can take years from which to recover.



**RECOMMENDATIONS
WYNNS COONAWARRA
CABERNET 1991** - Full of flavour will become an elegant rather than rich flavoured wine. Will keep. Approx \$12. - \$13.

**BALINGAL
CHARDONNAY 1993** - A trophy winning wine which has surprised many. Rich, buttery flavoured, lots of oak. Needs to be chilled. Drink now rather than keep. Approx \$5 - \$6.

**TOP SHELF MICHELTON
ART SERIES SHIRAZ 1991.** While the 1990 version of this wine won the Jimmy Watson Trophy, this wine may prove to be the better. Shiraz at its best. Don't be in a hurry to drink. Approx. \$18.00

BLAST FROM THE PAST

Mr. Croxford,
Melbourne Met Board of Works,
110 Spencer Street,
Melbourne

27th June, 1968.

Dear Sir,

At the last meeting of the Beaconsfield Progress Association, the subject of the Cardinia Dam was brought up.

On behalf of the members of the association, could you give us any idea, of the time that this project will come into service, also when it does, will the outlying areas of Beaconsfield be serviced by this Dam.

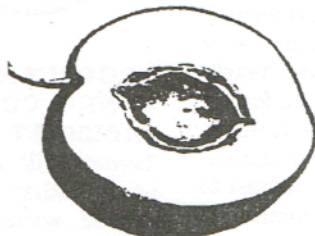
Thanking you Sir

JENIAN ORCHARDS

IAN WAKE

Apples & Pears
all year round at wholesale prices

specialists in
Peaches & Nectarines
(in season)



Open 7 days a week 8 am. to 5 pm.

PAYNE ROAD BEACONSFIELD 3807

PHONE (03) 707 1549

Beaconsfield Chiropractic Clinic

CHIROPRACTIC IS:

- * an approach to health which utilizes the Body's inherent & natural recuperative powers.
- * a healing science which places emphasis on maintaining the structural integrity of the body.

CHIROPRACTIC IS:

- * covered by Workcare and Transport Accident insurance and private health care funds without referral.
- * suitable for all age groups for a wide range of conditions including sports injuries and chronic problems.

Telephone (03) 796 1110

~ all hours ~

DR. STEVEN PRATT

B. App. Sc. (Chiropractic)

16-18 WOOD ST.,
BEACONSFIELD.

CRIME IN BEACONSFIELD

The following incidents have been reported to police to March 1994.

- | | | |
|---------------------|---|---------------------------------------|
| Railway Station | - | Bicycle theft |
| Beaconsfield School | - | Damage 3 windows |
| Lyle Ave | - | Attempted burglary |
| Mahon Ave. | - | Burglary/Theft of many valuable tools |
| Ferncroft Ct. | - | Theft from a building site of timber |
| May Rd. | - | Theft of pony |
| Wallace St. | - | Attempted break -in/damage |
| Soldiers Rd. | - | Wilfull damage |
| Train | - | Seats thrown from train |
| Princes Highway | - | Criminal damage to shop |
| Beaconsfield area | - | Cannabis cultivation |

INTERNATIONAL BIKE RACE THROUGH BEACONSFIELD.

On Saturday March 5th and Sunday March 6th, 86 Racing cyclists powered their way around the hills of Berwick, Beaconsfield and Upper Beaconsfield at electrifying speeds.

On Saturday the hilly route took in Guys Hill, Albers Rd, Upper Beaconsfield, Boundary Road, Harkaway Hill and Berwick High Street. Over 4 hours racing, 86 started and only 17 finished after averaging approximately 40 kilometres per hour over 160 kilometres.

Sundays course was shorter and faster around the course, bounded by Berwick Hotel, The Central Hotel, Beaconsfield and the Cardinia Country Hotel. Each lap took only 12 - 15 minutes.

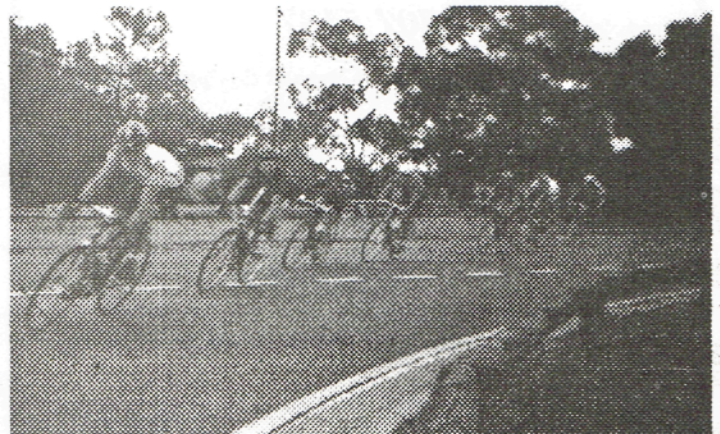
Below : Some of the riders pass through Beaconsfield.

Competitors came from Austria, Poland, Czech Republic. There were 9 Australian teams entered plus 20 individual riders.

Jayco International was the major sponsor along with many local businesses.

For the record, Australian Robert Crowe came 1st and Kelvin Martin of Australia came 2nd on the Saturday and Queenslander Robert McEwen came 1st and Powel Czopek of Poland came 2nd on Sunday.

The weather stayed good for riding both days. The event brought many people to the district and showed what great cycling country we have here on our door step. The spectacle of so many riders vying for front positions was most exciting. Organisers plan for this event to return annually.





BEACONSFIELD AUTOMOTIVE SERVICES

Michael Perks

Qualified Motor Mechanic
Licenced R.W.C. Vehicle Tester
& Repairer
V.A.C.C. Accredited Auto Repairer

Factory No. 1
94 Princes Hwy.
BEACONSFIELD



PHONE: 707 4468

BEACONSFIELD LODGE MOTEL

PHONE 7071454

1 Souter Street, Beaconsfield

Modern units in a quiet garden setting.

Facilities include colour TV, phone in all rooms, fridge, ensuite bathrooms, electric blankets, heaters, fans, clockradio, tea and coffee making facilities. Restaurant and playground opposite motel. Shops and hotel within 500 meters.

* * * RACV RATING

WHAT'S ON AT YOUR LOCAL GYM.

Notes from Squash and Fitness Centre

Sometimes the word Gym can conjure up thoughts of pain and suffering, but it doesn't have to be that way. We have workout programmes in the Gym to suit all fitness levels and your health at the time of starting. Aerobics are at all levels for Tummy, Hips and Thighs. We also have step classes that don't involve any running or jumping.

Last year we extended at the back of the centre, overlooking the Cardinia creek, one of the most delightful scenic views from a fitness centre that I have seen in a long time. This adds to the atmosphere. In this room we have put a Bodytone fitness circuit. The great thing about circuit, is that it doesn't make you stiff and sore, because of the design in equipment. Lots of fun and motivation: it has been rumoured that the President of the Beaconsfield Progress Association has been seen there.

For 1994 we are, looking forward to a very fit year. In January - early openers (birds) started with a vengeance at 6.30am Tuesday and Thursdays with a circuit class. There is no truth to the rumour that you have to be in Real-Estate to attend or wear Reeboks or a G String!

In February, Sue Stanley, who is a World Champion Aerobics

Instructor visited as a guest Instructor. What a great night. Apart from being inspired by having a World champion in our midst, everyone joined in after for a cold drink and talk afterwards and asked Sue about the training and diet, all very interesting. We wish Sue luck in a couple of weeks time as she represents Australia in this years World Cup.

March - has seen the start of the Beacy Gym Social Club. The aim is to have more Guest Instructors and guest speakers, outings to cover the younger members and the EverGreens. We are currently running an Easter Raffle and guess what the prize is!! Yes we do eat Easter Eggs down here!

April/May - will see the introduction of "Slide". The action is likened to Ice Skating and was designed by a person with an injury, then developed to mix in with Aerobic. Great for the thighs girls.

June - The ladies morning group for fitness and morning coffee. Guest speaker. Ladies morning Squash. New members welcome.

We would like to see you down at your local Gym, even just for a look around.

Good Health, Glenda and Bruno.



LETTERS

Dear Editor,

I thought maybe the following idea may stimulate the junior members of the community. Maybe the co-operation of the Primary School may help. Very few people realise the enormous effort that goes into the compiling of our own newsletter. As an encouragement, I will gladly contribute the \$20. prize if it will arouse some interest. Our future lies in the young ones.

For the past ten years I've communicated with a class of 'ten year olds' at Bournville (the original home of Cadbury) and their letters spurred me on to bring the talent of this age group forward. Who knows, we may even learn from some of their ideas.

Maybe a build up on a "Junior Competition" could be inserted in the next issue and the article enclosed (with your own comments) could be used in the following "Banner". All the best.

J.Armitage.

Ed. The Banner Sub-committee think this is a great idea and will follow up.

BEACONSFIELD TENNIS CLUB ENTER GIPPSLAND TENNIS ASSOCIATION

In the 1992/93 Summer Season the Beaconsfield Tennis Club entered a team into the Gippsland Tennis Association for the first time. The area the association covers is from Bairnsdale through to Warragul.

This was a great opportunity for the club, as the Gippsland Tennis Association has the highest standard of tennis available in the area and it also receives a lot of publicity through the media.

Beaconsfield were lucky in that they had the players to field such a competitive team. It included Greg Menzel, John Randabel, Jason Hoghton, Warrick MacGowan and Paul Osborne. In the women's team there were Kylie and Jenny Walker, Andrea Joynes, Leslie

Hampton and Marita Meeking.

They all knew each other well which helped in team chemistry. They had a sociable and fun season.

Beaconsfield took the competition by storm by winning the pre-season tournament and were quickly installed as favourites for the oncoming season.

Taco Bill Restaurant in Beaconsfield sponsored the side which the club and team appreciated very much.

Playing under the name of Taco Bill Beaconsfield, the team had a very successful undefeated season. They beat Traralgon APM in the semi-finals, at Beaconsfield. Then they played Moe Indoor at the Traralgon Tennis Club in the grand final which they won. They finished the season un-

defeated and earned the title of Premiers and Champions.

In the 93/94 season Beaconsfield were now seen as the team to try and beat. Beaconsfield had the same line up as the season prior but with the additions of local Andrew Peart, and Stacy Grande.

Beaconsfield lost in their first match of the season but they bounced back with a vengeance by finishing the "Home and Away" season on top of the ladder. In their second finals campaign, Beaconsfield were hot favourites, but were not unbeatable.

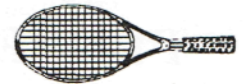
In the semi-finals Beaconsfield beat Traralgon APM again. The Grand Final was played at Beaconsfield and was a replay of the season before and they defeated Moe Indoor

convincingly with some great tennis.

Beaconsfield have a perfect record in G.T.A. and are looking forward to the 93/94 season to try for three premierships in a row.

The Beaconsfield Tennis Club and the G.T.A. side would like to thank Taco Bill Restaurant for their generous sponsorship and their ongoing support, it has been greatly appreciated.

CONGRATULATIONS to Kylie Walker and Jason Hoghton who became engaged during the tennis season, making a doubles pair on and off the court.



Carolyn Hutton

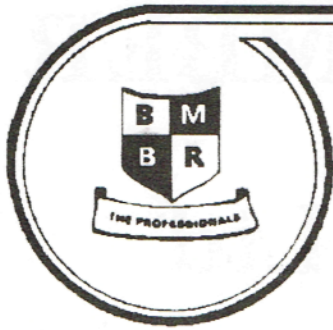
formerly hairdressing in Berwick, has now joined the team at

Reflections Hair Design

707 3277

2/70 Princes Highway,
BEACONSFIELD

DO YOU KNOW THIS FACE?



Berwick Motor Body Repairs

PTY. LTD.

SPECIALISING IN
INSURANCE SMASH REPAIRS
FOR ALL MAJOR INSURANCE COMPANIES

Using Universal Car Bench

Dedicated Jig System

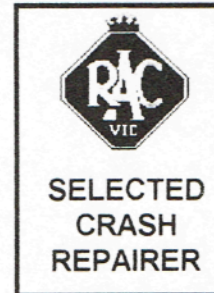
European Paint Baking Oven

24 HOUR TOWING SERVICE
(03) 796 1199

BODY SHOP
(059) 432 343

PRINCES HIGHWAY
OFFICER, 3809

COURTESY CAR AVAILABLE



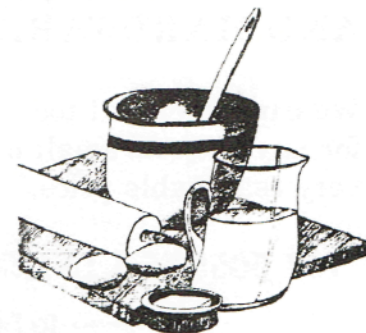
DIARY DATES

- 23rd - 25th April
Anzac Weekend
- 27th April
Progress Association Public Meeting
- 28th April
Chamber of Commerce Meeting (Ref. P. 12)
- 30th April 1st May
Community Centre Antique Workshop
- 8th May
Mothers Day
- 21st May
Beaconsfield Primary School Fete
Red Shield Appeal Collection Weekend
- 24th May
Community Centre Luncheon
- 27th May
Deadline for Banner Articles
- 4th June
Community Centre Aromatherapy W/shop
- 13th June
Queens Birthday Holiday
- 25th June
25th Anniversary Tennis Club
Presentation Night
- 31st October
Beaconsfield Progress Association Annual
Bonfire Night

RECIPE CORNER

FIGS WITH MILD BLUE CHEESE

Figs are now in season.
this Italian inspired dish makes
for a special entree.



1 fig per person - large and ripe.
Stand on its base.

Wrap in Proscuitto ham.
Pin the slice around the fig with a toothpick.

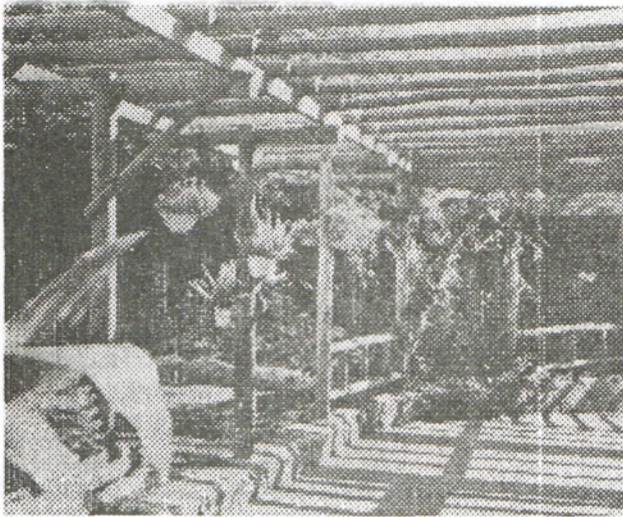
Fill the space between the ham and the fig with a soft blue cheese
from Neerim South. Approx 2 teaspoons of cheese per fig.

Place in a low oven - 150 C and warm until the cheese just melts.

* Serve with a rich Chardonnay like the Balingal or Seaview '93.

BEACONSFIELD TIMBER AND HARDWARE Pty Ltd

DO-IT-YOURSELF PROJECT No. 12



All materials and easy-to-follow plans to build this PermaRound Pergola are available from

BEACONSFIELD TIMBER AND HARDWARE Pty Ltd.

We can supply all tools and materials for any projects small or large at a very reasonable price.

CONSTRUCTION DETAILS

To avoid staining of the preservative treated wood and breakdown of the joints, it is essential that all fasteners including nails, bolts, nuts, washers and straps, have long lasting resistance to corrosion. Experience has shown that hot dip galvanized fasteners are highly suitable for this purpose.

Deformed shank nails such as Timberlok have good resistance to withdrawal and are recommended for maintaining secure nailing. Conventional smooth shank nails are unsatisfactory because they progressively lose holding power with continual wetting and drying of wood.

Erecting Posts

Embedding posts in the ground to a depth of approximately one fifth of their length - commonly 600 mm - is necessary to stabilize the pergola. Firm support against movement is provided by backfilling post holes with several well compacted 75 mm thick layers of soil or a mixture of 5 parts of soil and 1 part of cement.

Temporary bracing of posts with timber struts will ensure they maintain their vertically plumb position during backfilling.

Fixing Beams

Squares notched up to 20 mm deep, PermaRound beams are attached to the top of posts by long screws or metal straps and nuts. Where struts are used, securing with four nails on each side of the post will provide a strong beam to post joint.

Securing Rafters

Square or square notched on the underside to a maximum of 30 mm, rafters are seated on beams and fastened by skew nailing. One or preferably two 75 by 3.75 mm nails driven into the beam from each side of the rafter, will ensure a secure fixing.

CREATING SHADE

To provide shade during summer, vines and other climbing plants can be trained along 70 by 35 mm sawn PermaPine battens fastened on top of the rafters.

Spaced at centres not exceeding 500 mm, battens are fixed with one 100 by 3.75 mm nail driven through at each joint.

Shadecloth placed over the rafters and held down with battens or square section wire mesh is an alternative method of providing shade.

Fixing Ledgers to Walls

For brick and masonry walls, the 90 by 45 mm ledger is securely fixed with 10 mm diameter expansion anchors placed 100 to 150 mm from each end and spaced up to 1 metre apart. On timber framed walls, two 4.75 mm diameter wood screws positioned across the width of the ledger are required penetrating 40 mm into each stud.

FURTHER INFORMATION

Detailed information on the properties of preservative treated Radiata Pine has been published in 'Data Sheet 3A.3. Preservative Treated Radiata Pine' Information Bulletin 386 Preservative Treated Radiata Pine.

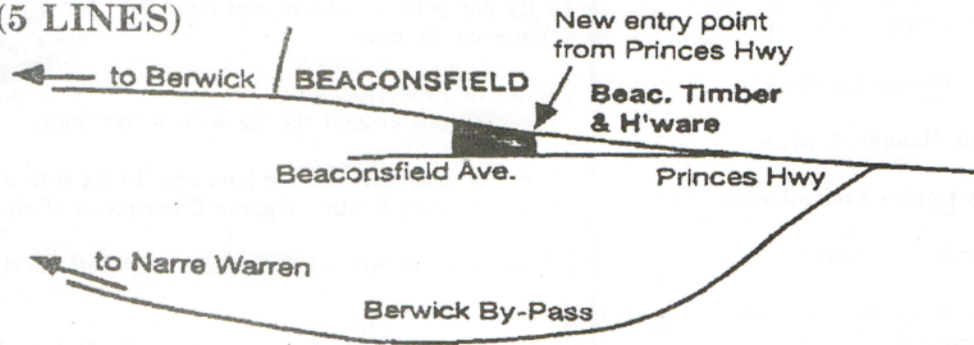
For further information please contact:

radiata pine
Association of Australia Inc
25 Campbell St, Melbourne, Vic 3000
Telephone: (03) 499 2 35 1990 FAX: (03) 499 3066
© Copyright 1990 by Radiata Pine Association of Australia
Published by BEACONSFIELD TIMBER AND HARDWARE Pty Ltd

For more information prepared by:

RADIATA PINE RESEARCH INSTITUTE
16 South Parade Road, Geelong, Vic 3220
Telephone: (053) 42 2774
PUBL. LT 4448888-000-0000

707 5055 (5 LINES)



BEACONSFIELD TIMBER AND HARDWARE Pty Ltd
Lot 2 Beaconsfield Ave. Beaconsfield Tel. 707 5055

BRICKBATS AND BOUQUETS

Bouquets :

To Beaconsfield Timber and Hardware for voluntarily assisting 1st Beaconsfield Scouts to move a hire canoe back to Vesper Drive, Narre Warren from Beaconsfield.

Brickbats :

To the person who selfishly dumped gear box, windscreen and plumbing rubbish at Beaconsfield Primary School's dumper, we incurred the cost of removal.

Brickbats :

To the persons who are responsible for the removal of flowers from the beds in front of the shops and bus stop.

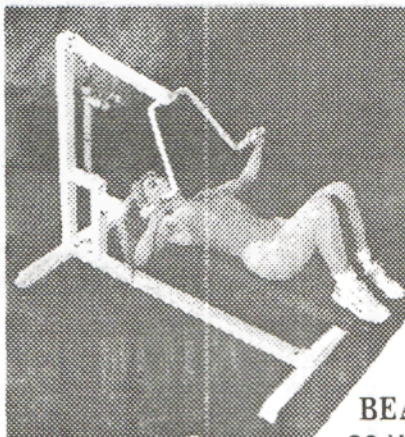
A BIG BOUQUET

To all those people who have taken the time to write a Brickbat or Bouquet and leave them in the box provided at the Post Office. Your contribution to this article and your awareness of Beaconsfield both good and bad is great.



BODY SHAPING SPECIAL

Beaconsfield Squash & Fitness Centre



Now presents the latest in fitness technology with its **TOTAL BODY CIRCUIT** *Special for Banner readers*

12 months Gym/Aerobics & Circuit only **\$249**

Casuals welcome

Bookings **707 2929**

BEACONSFIELD SQUASH & FITNESS CENTRE
29 Wood St, Beaconsfield 707 2929



BEACON HILLS CHAMBER OF COMMERCE

SUBJECT: New termination laws starting on 31st March 1994.
A MISTAKE COULD COST THOUSANDS UNDER THE NEW LAWS WRONGFUL DISMISSAL, YOU MUST KNOW THE RULES.

GUEST SPEAKER: Michael Butler from Victorian Chamber of Commerce Authority on termination and redundancy.

VENUE : Pine Grove Hotel, Stony Creek Road, Beaconsfield Upper.

WHEN: 8pm. 28th. April 1994

COST: \$10 Per head-Pay at the door (Includes finger food/bar facilities available).

BOOKINGS ESSENTIAL; CONTACT: TONY SKENE PH: (059) 443 524

SCOTT HOLDINGS PTY LTD
For prompt, friendly service with

**BOBCAT
BACKHOE
TIPPER AND
RETAINER WALLS
TELEPHONE (03)
707 1685**

Stuart Scott

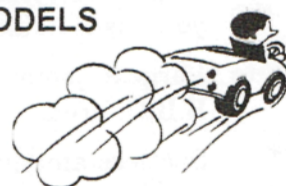
PAYNE RD. BEACONSFIELD

THE STEERING JOINT

WE AIM TO BE THE BEST AT WHAT WE DO

BECAUSE YOUR CAR DESERVES PEOPLE WHO CARE

- ★ FULL MECHANICAL REPAIRS
- ★ SERVICING OF ALL MAKES & MODELS
- ★ ELECTRONIC TUNING
- ★ BREAK & CLUTCH REPAIRS
- ★ FRONT END REPAIRS
- ★ WHEEL ALIGNMENT
- ★ WHEEL BALANCING ON & OFF CAR



FREE PICK UP & DELIVERY LOCAL AREA

EVERY VEHICLE SERVICED AT
THE STEERING JOINT
IS DETAILED FREE! OF CHARGE
YOUR CAR WILL LOOK AND FEEL GREAT

**FREE
NO OBLIGATION
QUOTES**
12 WOOD STREET
BEACONSFIELD
PHONE 707 3393

ALL WORK GUARANTEED

THE WILLOWS NURSERY

Fully qualified, ex-teacher of Horticulture John Baker gives you free advice on all Your gardening problems



THE WILLOWS NURSERY
Cnr. Princes Hwy & Glismann Rd., Beaconsfield

7074852

OPEN 7 DAYS A WEEK 9am-5.30pm

BLUE GUM PARK - EASTSIDE

(Part of the Blue Gum Group of Mobile Home Parks)

Brunt Road, Beaconsfield.
(Just off Princes Highway)

For Peaceful Living under the
control of our resident managers.
"YOU CAN'T BEAT IT!"



- * Quiet Treed settings.
- * Mobile homes available for short and long term accommodation OR bring your own home and we settle you in.
- * Large in ground pool, Tennis court and B.B.Q. area.
- * Spotless amenities block.
- * Competitive Rental rates.

"Pop in and see Barbara or Barry Duke, it would be our pleasure to be of service to you."

Phone (03) 707 2753.

OUR NATURAL WORLD



Peter Hansen

Does the word 'Baubiologie' flow easily and with instant recognition off your tongue? If you said yes, you are indeed a very well read person. Breaking it up into sections will help us understand it. "Bau" is german for house (home). "Bio" is life. "logos" means creativity, order, harmony, health, vitality, wholeness.

"Baubiologie" means a healthy living environment, and is directly concerned with home building, and with homes already built. The people who train in this area are generally referred to as "building biologists" and their task is to analyse the multiple fields, rays, gases, electromagnetic vibrations etc., that pervade the average home with particular emphasis on the bedroom.

The work is done with sensitive and reliable equipment, physical electronic instruments and is known as "stimuli identification".

What is the purpose you ask? Simple. To improve our health and relieve us from sick making stresses contained in the average modern home.

Germany leads in this field and have been training and producing these specialists for the last 15 years and much research has been carried out to substantiate the work performed.

Clinical studies in Sweden 12 years ago, found that 2000 homes built in proximity to

of cancer in children, compared to home in non-proximate areas of power lines.

In U.S.A. in 1986, the University of North Carolina found that 20 percent of childhood cancers were traceable to power lines and fields. A judge in Florida, U.S.A. ruled that children were forbidden to use a school's playground due to power lines crossing the grounds, and the local S.E.C. (our equivalent) had to spend 25 million dollars re-routing the power lines.

In Seattle in 1987, an attempt by the city to run high voltage lines through an entire residential neighbourhood, was defeated by angry citizens, fearful of health problems resulting from it.

A german man, Wolfgang Maes, years ago, suffered long term chronic health problems which made him an invalid of sorts. In desperation, after trying everything he could think of he called in a "building Biologist", who found his bedroom a minefield of electromagnetic fields. The electrical devices, like the clock radio, stereo set, T.V., Answering machines and lots of extension cords under his bed. Also his house fuse box (outside) was less than a metre from the head of his bed. All these things were changed, removed or altered in some way to reduce the radiations coming from them. A metal inner spring mattress was removed and lastly the synthetic electrostatically charged carpet was removed.

Two months later (to the doctor's confusion) he was in perfect health and is now a leading "Building Biologist" himself, to whom doctors and naturopaths send patients if they suspect electromagnetic poisoning.

This is a relatively new area of study but is gaining increasing credence. Food for thought indeed.



- * COWHIDES
- * DEERHIDES
- * CAR SEAT COVERS
- * SHEEPSKIN FLOOR RUGS
- * UGG BOOTS
- * MOCCASINS
- * SLIPPERS
- * BABY UNDERLAYS
- * MEDICAL RUGS AND AUSTRALIAN SOUVENIRS WITH A DIFFERENCE.

REASONABLE PRICES. OUR FRIENDLY STAFF WILL MAKE YOU WELCOME. WELL WORTH A BROWSE.

HIWAY SKINCRAFTS. PRINCES HIGHWAY. OFFICER

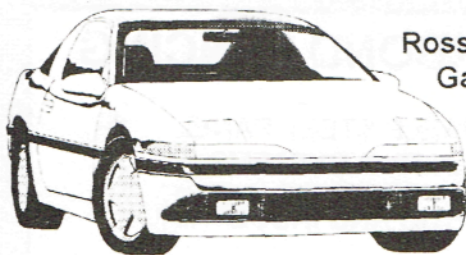
Ph. (059) 432 339.

OPEN 10 - 5 WED. - SUN.
CLOSED MON. - TUES.

BEACIE SERVICE CENTRE

Servicing & Mechanical Repairs

Now Licenced Roadworthy Testers



Ross Mercier
Gary Bryan

ALL WORK GUARANTEED

796 1401

122 Princes Hwy., Beaconsfield

"There's a time when the door to childhood gently closes, and no power on earth can open it again."



CHURCH ANNOUNCEMENTS

'TURN YOUR HEART TOWARD HOME'

- a series on family issues - will be screened at the Baptist Church on the following Sunday evenings. 6.30 p.m.:
 May 8: "A Father Looks Back"
 May 22 - "Power in Parenting" - i.
 May 29 - "Power in Parenting" - ii.
 June 5 - "The Family Under Fire"
 June 19: Overcoming a Painful Childhood

These issues are presented by Dr. James Dobson. James Dobson is an accredited psychologist, teacher and author of nine best-selling books. He served for 14 years as Associate Clinical Professor of Pediatrics at the University of Southern California, and is on the attending staff of Children's hospital, Los Angeles. In 1980 Dr. Dobson was appointed by President Carter as a member of a White House Task Force advising on family matters. In 1982 he was appointed by President Reagan to the National Advisory Commission of the Office of Juvenile Justice and Delinquency Prevention, and since has consulted with the President on government policies affecting the family. More recently he has served on the Attorney General's Commission on Pornography.

James wife Shirley shares the presentation. Following graduation at Pasadena College, she taught in the state of California. After the birth of her first child she chose to become a full-time mother and homemaker. In recent years she has shared authorship of a best-selling book "Let's make memory". Beaconsfield Church is presenting this series as a community service. Everybody welcome. (6.30 p.m. to 7.30 p.m. approx.)

"NOBODY" CARES

*There's someone who's called Nobody
 That does such awful things
 Like leaving all the books around
 And hiding special rings.*

*It's Nobody who left the door ajar on the hottest summer's day
 And tears the towels down from the hooks
 And litters up the way.*

*Should we confess it may be us
 Who really are to blame?
 Brave the lashings of the tongue
 Which makes us feel the shame
 We all have a Nobody that flitters here and there,
 But most the time I must confess
 He's sitting on my chair.*

J.A.

BEACY'S NOTICE BOARD



Forever Living Products

Sylvia Bence

INDEPENDENT DISTRIBUTOR

3 Mahon Ave. Beaconsfield 3807 Ph. 707 1640

F.L.P.'s unique stabilisation process- to Pharmaceutical standard- ensures that it's Aloe Vera products are the finest on the market.

Drink it-77 nutrients- SLIM with the nutritional program. Deep muscle penetration for sporting injuries, arthritis etc. Ph balanced for skin care and hair treatments.

MELALEUCA LODGE CNR BRUNT RD., PRINCES HIGHWAY



Modern accommodation including deluxe spa units

Wedding Receptions
Conferences
Functions

Contact Neilma or Graeme
for Inspections or Bookings **796 1044**

PROFESSIONAL WORD PROCESSING

KAYE CHAPMAN

- Reports
- Manuals
- Presentations

Fast, reliable service utilising modern equipment.
Laser & colour inkjet printing. Photocopying available.
\$25.00 per hour.

Phone (03) 796 2302

Fax (03) 707 5376

Berwick Wood Machining

TIMBER CUT AND DRESSED
TO YOUR REQUIREMENTS

OPEN 7-30 AM MONDAY TO SATURDAY

4/94 PRINCES HWY.
BEACONSFIELD 3807 **PH. 796 1861**

Dr. Robert A. Panjkov B. D. Sc. (Melb.)

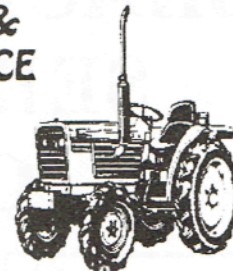
DENTIST

Unit 4 87 Wood Street
Beaconsfield 3807

Ph. 707 3508

GRASS SLASHING & FARM MAINTENANCE

Bryan Park
Phone: 707 2007
FREE QUOTES



- Fences Repaired
- Chainsaw work
- All Types of Paving
- Rubbish Removed



MINIBAH RECYCLING DEPOT

- ★ We accept fridges
- ★ All types of metals
- ★ Bundled Newspaper
- ★ Bric a Brac
- ★ W/M & Clothes Dryers.
- ★ Car engines etc.
- ★ Bottles & Cans

Berwick Tip
Quarry Rd.
Narre Warren

707 5725

COLORBOND FENCING

DURABLE STEEL PANEL
FENCING SYSTEMS

DOMESTIC AND INDUSTRIAL

"MAINTENANCE FREE"

Ph. 707 3364 or 707 5862

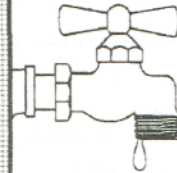
BEACY'S NOTICE BOARD

Dressmaker

Alterations
Same Day Service

DENISE 707 3340

PLUMBER



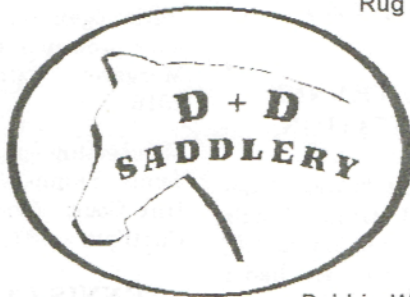
Noel Tonks

707 5153

General Plumbing
Gas supply and installation
Sewerage and Maintenance

Reg. 15753

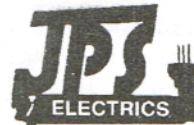
Rug Repairs



Shop 6/4 Princes Hwy.
Beaconsfield

Debbie Whitworth
Proprietor
796 1750

ELECTRICAL CONTRACTOR



Domestic, Commercial,
Industrial
installations and repairs

PETER STEELE - R.E.C. 8772

Phone (03) 707 4906

Mobile 018 392 370

23 Hudson Street, Beaconsfield.

TYREPOWER

RAY LAWN
Proprietor

BERWICK TYREPOWER
Enterprise Ave, Berwick, Vic. 3806
Tel (03) 707 3177 Fax: (03) 796 1836

COMPUTERS

Quality Products
Quality Service
Competitive Price



PLATYPUS
TECHNOLOGY PTY. LTD.
TECHNOLOGY TOOLS FOR INDUSTRY

Platypus Technology P/L
124 Princes Highway, Beaconsfield

Ph. (03) 796 2302
Fax. (03) 707 5376

- * Landscaping
- * Rotary Hoeing
- * Grass Slashing
- * Blocks Cleared

- * Lawn mowing - Ride on mower & Slashers
- * Small 4WD front end loader for hire
- * Paths and Barbecue areas paved
- * Fruit trees sprayed
- * Vegetable gardens hoed and prepared for spring

Phone Graham 796 1297 or

018 562 450

ENTERPRISE SCREENS & SECURITY DOORS

Hollands, Vertical Drapes, Venetians
Canvas Blinds

62 Enterprise Avenue

Phone 796 1088

Beaconsfield Sport



BEACONSFIELD TENNIS CLUB NEWS

(Written by M. Chatfield)



Since the last Tennis Club News, members have been busy with Championships for Juniors and Seniors. Ladies and Mens Club Championships are still in progress. Singles are to be completed by the 29th May.

JUNIORS

On the 20th March, Junior Championships were held with a large number of juniors keen to participate and showing a good club spirit. The day was made enjoyable with the sunny conditions and a B.B.Q. lunch between the singles competition in the morning and doubles in the afternoon.

"A" Grade - Winners - Ben McKay and Travis McKay
Runners Up - Grant Stutsel and David Jame
"B" Grade - Winners - Travis McKay and Peter Burns
Runners Up - David Valentine and Anthony Fargas
"C" Grade - Winners - Glen Penglase and Dean Pearson
Runners Up - Phillip Cahill and Warren Pearson

Junior Singles are to be played on Grand Final Day 29th May
Singles - "A" Grade - Ben McKay vs David Valentine
"B" Grade - Travis McKay vs David Valentine

SENIORS

On the 27th the Seniors had their opportunity to compete in Ladies and Mens Doubles and Mixed Competition. With the same format as the Jun-

Finalists to play off on Grand Final Day :

Ladies "C" Grade Doubles Brenda Douma & Glenda Gorton vs Anne Johnston & Judy O'Bryan.

Ladies "B" Grade Doubles Winners - Justine Clough and Ann Phillips

Runners Up - Heather Saunders and Joy Palmer

Mens "B" Grade Doubles - Bill Roder & Trevor Thompson vs John Douma & Mitchell Croen.

Mens "A" Grade Doubles - Paul Osbourne & Warrick MacGowan vs Andrew Peart and Greg Menzel.

Mixed "B" Grade - Karen & Mitchell Croen vs Teresa & Grant Stutsel.

SATURDAY JUNIOR COMPETITION

Finalists: Section 5 Premiers, Team Members - Scott Hore, Peter Burns, Adam Sheean, Mark Van Eck and James Nicoli.

Section 6 Premiers, Team members - Dean Hore, Travis McKay, Jos Roder, Simon Hastings and Ryan Blunden.

Section 12 Premiers, Team members - Kate Shanks, Phillip Cahill, Glen Penglase, Brendan Tye, Abe Roder and Kevin Burns.

Section 8 Runners Up, Team members - Terri-Anne Leembruggen, Kinta Pederson, Ben Andrews, Danielle West, Anthony Fargas and Nerida Barclay.

Section 3 - Team members - Ben McKay, Matthew Butler, Jesse Douma, David Miles and Grant Stutsel.

This was a great effort for the

in the Berwick and District Tennis Association.

SATURDAY SENIORS

Finalists - Sections 1,3, & 6 made it to the Finals. Congratulations to those teams for their effort.

** New Season for Saturday Juniors and Seniors commences on 30th April.

NIGHT TENNIS COMPETITION

Tuesday Night "Unisex" Beginners to "B" Grade. Finals were held on 22nd March. "A" Grade - The Bombers' had a very convincing win against 'The Families Affair' "B" Grade - 'The Dragons' came up to beat 'The Shameless' by 3 games. The Dragons, a new team were overjoyed with their win. With enthusiasm the team improved

each week, coming up from the bottom to win the Grand Final.

The tennis was good and enjoyed by the teams competing. The other teams not in finals played in a round robin and watched the finalists.

Tuesday Night Competition starts again on 19th April. Any enquiries contact Margaret Chatfield on 707 2016.

Membership enquiries contact Jenny Shinnars - 707 2575
Hire Courts contact Margaret Chatfield - 707 2016.

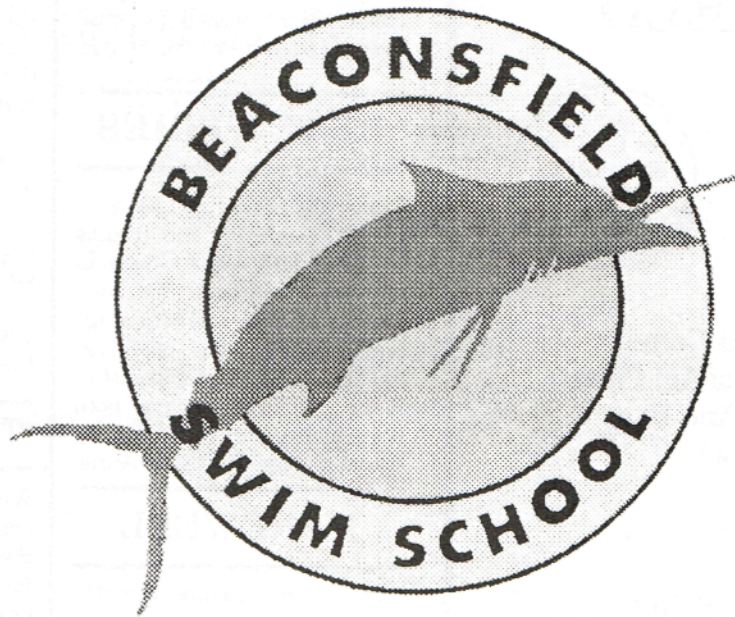
TENNIS CLUB 25th ANNIVERSARY

The club will be celebrating its 25th Anniversary with a Rock'n'Roll Night on 25th June. Darryl Cotton and the Rock-a-fellas will be playing.

TENNIS CLUB 25th ANNIVERSARY



ROCK'N'ROLL NIGHT ON 25TH JUNE. DARRYL COTTON AND THE ROCK-A-FELLAS WILL



NEW NAME NEW LOGO

To welcome in the new term, the Swim School is now using its new name and logo.

The Swordfish was incorporated in the design as it is one of the first skills the children are taught. Directors Michael Moloney & Jennifer Hopkins have revised the achievement certificates to provide more encouragement for the younger swimmers - the new certificates are now on display at the school.

The consulting rooms additions are nearly finished and should be in use shortly.

Assessments for new pupils are held on Tuesday and Wednesday afternoons between 4 and 5.30pm or by prior arrangements.

BEACONSFIELD GARDEN SUPPLIES



For friendly, efficient service

- * Sand, Screenings and Cement
- * Pavers and Terra Cotta Agi Pipes
- * Redgum Chips and Pine Bark
- * Sleepers (old and new)
- * Scoria and Rocks
- * Handyman Hardware

WE CATER FOR ALL BUILDERS, LANDSCAPERS AND TRADESMEN
-Deliveries 7 days a week-

"Call in and say Hello"

94 - 100 Princes Highway, Beaconsfield
Telephone (03) 707 5144

WANTED

Bluestones, no quantity too small paying \$1.60 each. Ph. 796 2302 B.H.

BEST WISHES

From the Progress Association, Community and friends to Keith and Anne Goodman of Kenilworth Ave. We wish you well in the recovery stage and hope that the operation has been entirely successful. Keith and Anne have both been in hospital for a Kidney transfer from Keith to Anne.

FAREWELL

Kerry and Graeme Minotti. We hope they enjoy their time travelling.

Jenny and Peter Martin. They have moved to Port Fairy to enjoy the view and Peter has accepted a new position at Warrnambool.

RAINFALL IN BEACONSFIELD

Cont. from page 6

Rainfall should be measured at 9.am daily and the amount entered against the date on which it is measured (in N.Z. it is entered against the date of the previous day).

The site selected for a rain gauge should, if possible, be an open one, unobstructed by high trees or fences, on level ground, not on a slope or terrace.

The post on which the rain gauge is fixed should be as near to the ground level as possible and twice as far away from obstructions as the height of surrounding buildings or trees.

Wind can affect rainfall readings. Driving rain will fail to reach the opening of the gauge if it is placed too close to buildings or trees. More accurate readings can be obtained by using two rain gauges, spaced about twenty feet apart and averaging the two readings.

BIRTHS

Congratulations to - Dianne and Paul Howell on the arrival of their daughter Katelyn.

- Lyn and David Burchill A daughter, Laura Jane.

- Cheryl and Ross Hore. A Granddaughter for Jean.

- Kathy and Robin Best with the arrival of their son.

"THE KIT KAT STOP"

Well known Beaconsfield Resident was travelling home from Swan Hill and decided to stop for his Kit Kat at Heathcote only to be greeted by fellow traveller aboard his motor cycle. The well known Jeweller was returning from a Model Railway Show at Bendigo.

CLOSING DATE FOR NEXT BANNER IS 27th. MAY 1994

Like to advertise in Beacy's own paper "THE BANNER"

Fill in the form and leave it at the Post Office.

Name of Advertiser.....

Phone Number.....

Address to which account is to be sent.....

Message.....

Rates for advertising:

1/4 page in a single issue \$25.
1/2 page in a single issue \$48.
Full page in a single issue \$80.

All above rates 20% discount if paid in advance.

Beacy's Notice Board \$10 per issue
Market Place \$1 per line per issue.

Beaconsfield Meat Supply

23 Wood St. Beaconsfield 3807
Contact Rocky on 707 1163



SPIT
HIRE
AVAILABLE

FREE HOME DELIVERIES

DAILY SPECIALS
CATERING AVAILABLE
707 1163