

Beaconsfield Banner

Vol. 5 No. 5

Published by the Beaconsfield Progress Association Inc.

October 1993

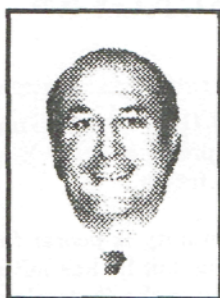
NEWSLETTER CO-ORDINATOR TED HORTON Ph. 707 1313 ASSISTANT MARGARET BOON 707 5053
ADVERTISING CO-ORDINATOR TONY RUSHTON Ph. 707 1765 BANNER POSTAL ADDRESS P.O. BOX 217 BEACONSFIELD 3807



Shire of
Pakenham

What's Happening at Council

by Shire of Pakenham Councillor Ted Owen.



Cr. Ted Owen,
Upper Beaconsfield Road,
Officer, 3809
(059) 432374

Princes Highway - Name Change

The continuing saga of the Princes Highway name change continues. Council at its last meeting deferred re-naming the road to seek the comments from the City of Berwick Council. This resulted from replies and comments received from the C.F.A. and the Pakenham Police.

Both these Authorities expressed concern over confusion perceived by the public over the one road having different names in three Municipalities. Copy of the report and copies of these letters have been supplied to the Beaconsfield Progress Association.

Beaconsfield Avenue - North Side Footpath Scheme

Council has agreed to abandon the proposed footpath scheme in Beaconsfield Avenue and the abutting owners are to be advised. There appears to be little support for the scheme as the majority of replies from Council letters

were against the construction. As the footpath is constructed now on the south side there appears to be little need for one on the north side.

Pakenham Major Regional Recreation Reserve

Council has called for tenders for the construction of two ovals and a Little Athletics track.

Major Developments Approved

Two big food stores - To be approved for Pakenham - McDonalds and Kentucky Fried Chicken to be established on the Princes Highway at Pakenham. Council is endeavouring to ensure that the buildings be designed to create a village type atmosphere.

Rural Road Numbering

Rural road numbering is completed in the Beaconhills Riding and ratepayers have been notified of their property numbers.

Cont. Page 8.

THE LIFE OF BOB BURGESS



tain in 1971 a position he held unopposed for 20 years.

Bob's Fire Service was not limited to serving the fire needs of his local community as he was actively involved in the Pakenham Group of Fire Brigades. He was Secretary from 1974 -1982, Deputy Group Officer and recently Communications Officer until his illness forced him to retire.

The Beaconsfield Fire Brigade are saddened at the recent death of their Long Serving Captain Bob Burgess.

Bob was an inspiration to all who served with him in the Fire Service.

He joined Beaconsfield Fire Brigade in 1955 and quickly moved to the position of 2nd Lt. in 1960. He became Cap-

With his Group activities came the add responsibility of fire fighting state wide from Balranald to Cann River.

Bob received many awards over his distinguished career, he was a fiercely proud volunteer fire-fighter. The following is a list of his recognition in the community.

Cont. Page 2.

BEACONSFIELD PROGRESS ASSOCIATION Inc. A.G.M.

The Annual General Meeting of the Beaconsfield Progress Association Inc. will be held on Wednesday 27th October, 1993.

The meeting will be held at the Beaconsfield Community Centre in Beaconsfield Ave. at 8.00pm.

Members are required to form the committee for 1993 - 1994.

REMEMBER THIS IS YOUR TOWN
COME AND HAVE YOUR SAY

BIG BEACY BONFIRE

Planned for Monday night November 1st Cup Eve. This year promises to be bigger than ever.

Starting at about 6pm there will be a very special appearance by Wally Wombat to entertain the young'uns. At a nominal charge, sparklers will be available for all. Bill from Darnum will be coming to make all sorts of animals and hats made out of long skinny balloons! Hamburgers, hot drinks and cold cans will be available on the night. There will be a special stage and lighting set up as usual.

Gemco Players Theatre Company will present their rendition of "Cinderella and the Hairy Godmother" to entertain everyone. Following that will be the "Wattle Rose and Tumblewood Trio" playing some all-time favourite songs and party dance music.

The fire should light up the whole scene about 8 pm, overseen by our expert Beaconsfield Voluntary Fire Brigade members.

Look out for the big signs and bring your family and friends to join in the fun and frolic.



A group help build the Bonfire in 1990

FAREWELL

On Saturday, 2nd October, 1993, approximately 100 people gathered at the Beaconsfield Children's Services Centre to farewell the Blundy-Gow-Brown family.

Candy and her family have lived in Beaconsfield for approximately 5 years in which time they have been valued members of our community. As a member of School Council and the Kindergarten Committee Candy will be missed as her ability to contribute to the welfare of those around her has always been her number one priority.

Jessica, Wesley and Elle have also been involved in many local groups i.e., Guides, Cubs, Tennis Club, Little Athletics, Football, Gymnastics, Swimming and local youth group.

A presentation was made to the family of an Aerial Photo of Beaconsfield and two sugar glider possums for them take as a memento of their friends at Beaconsfield.

Candy and her family have moved to Sydney to take up a promotion with her employment. We all wish them luck and happiness for the future.

BARBECUE UPDATE

The Progress Association has permission in writing from the Shire of Pakenham to further landscape the area around the Town's new barbecue and shelter.

Thoughts are that we should terrace the bank to some extent using disused telegraph poles which will come from the Adamson Road area. Then low native shrubs will be planted in between. This should be an ongoing project for that area so in time it should become something for

the community to visit and be proud of.

CLEAN UP YOUR GARDEN

Clean up your garden for summer and bring your combustible garden waste to build Beaconsfields Community Bonfire on the town reserve behind Taco Bills. Any questions please phone 7071313 or 7071765

THE LIFE OF BOB BURGESS

Cont. from Page 1.

1. CFA Long Service Award in excess of 30 years.

2. National Fire Service Medal.

3. Life Membership of the Beaconsfield Fire Brigade.

4. Life Membership of the Victorian Rural Fire Brigades.

5. Telecom Advance Australia's Award shared with his wife Beverley.

Judy and Greg who are immensely proud of their husband and father.

The community is poorer for his passing, but he has left a fine legacy in the Professional Volunteer Fire Service that this community now enjoys.

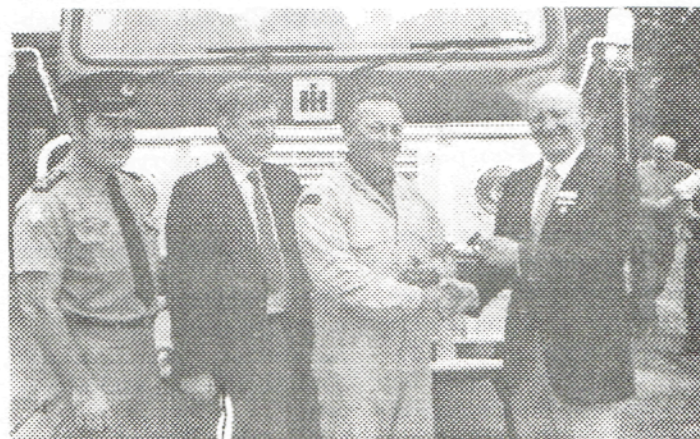
Bob was a dedicated person, no task was too great and nothing was too much trouble. He touched many people in his lifetime, he is so sadly missed.

Bobs' role in serving the community was not limited to the Fire Services he was a Scout Leader, School President, Tennis Club Secretary and Officer Football and Cricket Club Member.

Bob leaves his wife Bev and four children, Leonie, Glenys,

Those who knew him understand the magnitude of the loss.

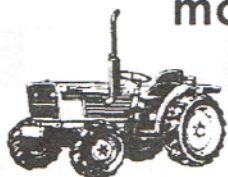
Bob lost his battle with cancer on September 10th 1993, the community of Beaconsfield say **Thank you** and extend their sympathy to his family.



Picture Left:

Bob Burgess receives the keys to the new truck. L-R Ian Symons, Hon. Rob Maclellan Bob Burgess and Cr. Michael Moore.

For all outdoor
needs from tractors,
mowers, chainsaws,
brushcutters,
pumps, etc

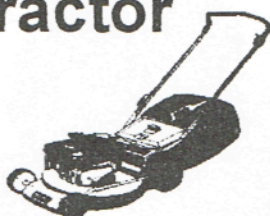


Spares, Repairs & Service

Contact Peter Willis

**Beaconsfield
Mower & Tractor
Centre**

707 5368



**BERWICK
AUTO
ELECTRICS**



**3/94 Princes Hwy Beaconsfield
Telephone: 796 1550**

**Complete Auto Electrical
Service, Change Over
Units. Discount Batteries
Truck and Machine Wiring**

Also at:
29 Enterprise Ave
Berwick Ph: 707 3617



Presidents Patter.

(Beaconsfield Progress Association)



The year is nearly ended for the Association and the Annual General Meeting will be held on Wednesday 27th October.

Issues that concern the community are never far away and this year was no exception. The biggest was the Melbourne Water's Regional Park and that will drag on for years to come.

Council's moves to alter the name of "Princes Highway" has met with a lot of opposition. Heavy trucks through Beaconsfield gave rise to concern as have other parking problems and road conditions.

On the positive side, Pakenham Shire has spent a lot of money on improvements

in Beaconsfield and the town now has the use of another fine Community Meeting Place in the new Children's Service Centre on the Primary School Grounds.

The Association does keep busy in other ways. The "Banner", like "Topsy", just continues to grow.

The Bonfire Night for the community has become a firm tradition as has Carols by the Creek.

The Pakenham Shire calls on the Progress Association to respond to draught planning reports and policies. In return, the Association acts strongly as a collective to report back to Council the views of the Community. In the main, Council responds positively to the Association because it is a properly constituted group.

For the well-being of the township and its community, it is essential that the Association is well supported, especially at this time of rapid development.

PERSONALITY PROFILE 'WATTLE ROSE & TUMBLEWEED' TRIO

Here is a photo of the band taken at the last minute on time exposure in our lounge room.

We started off as a four piece band about two years ago. Our keyboard player went to live in Fiji a few months ago so the three of us have been together for about six months.

We play regularly at the Robin Hood Hotel in Drouin and also Senior Citizens and charity functions.

We do mainly Country and Western and folk music, more easy listening than dance music but we did do a barn dance about two months ago which was successful.

Joe and myself are the lead singers in the band while Bill does some backing vocals. I play flute and guitar, Bill plays Banjo, Bass & Harmonic. Joe plays guitar and mandolin.



Pictured LtoR:
Sue Oldham, Bill
Oldham & Joe.



Beaconsfield Community Centre Inc.

P.O. Box 2 Beaconsfield. Ph. 707 3449



Sue Bailey Co-ordinator

This term the Beaconsfield Community Centre is getting ready for the festive season. We are offering many courses with a Christmas flavour. Among the Christmas activities taking place on Tuesdays afternoons from 1.00 - 3.00 pm (Child care available) are:

Christmas Tree Decorations
Christmas Table Decoration
Christmas Plum Pudding
Cake Decoration
Gingerbread Houses

You could also make your own Christmas cards with the help of the skills you learn in our Calligraphy classes on a Wednesday afternoon. These classes are being held at the new Beaconsfield Hall. We have use of a room in the new centre, which has enabled us to offer a greater variety of classes.

The programming committee has been very busy organising new activities this term and they include a "Gardening workshop" run by John Baker on Thursday afternoon 28th October; a weekend "Antique Workshop" on the 6th & 7th of November, where you bring along your own piece of furniture to restore under the skilful guidance of John Brunton; a "Wine Tasting Evening" - there will be 2 informal sessions on a Friday evening where a variety of Australian Red and White

wines will be discussed and tasted; "Self Defence for Women", a 2 hour session on Thursday 18th November from 7.30 - 9.30 pm, which is designed to give basic knowledge on how to protect yourself in a physically threatening situation; and a "Recipe Swapping Luncheon" where you bring along a sample of your favourite quick and economical dish, together with a copy of the recipe. Sit down and enjoy tasting everyone's favourite dish.

All Children Services are running smoothly and are well attended. And this term we are offering a second session of Occasional Care for children aged from 3 months. This session from 12.30 - 3.30 on Wednesday afternoon is in addition to the successful Tuesday afternoon session. This might give you that bit of extra time you need for Christmas shopping.

Midway also have many activities planned for the new term. These include a "Cup Day Luncheon" at the centre (which is open to all members of the centre) and a visit to a Show at the Warragul Community Arts Centre.

We would like to extend an invitation to all members of the centre - students, tutors and especially to the hardworking committee members for an "Afternoon Tea" on Tuesday the 14th of December at 1.00pm.

Come and join us for this FREE pre-christmas afternoon tea to celebrate a very successful year at the centre.

FOOD FOR THOUGHT

If all the hot dogs made in the USA every year were joined together they would stretch from the earth to the moon 2 1/2 times.

MIDWAY NEWS

Quite a lot has been happening in the last few weeks. Meetings on Mondays are always great with plenty of fresh ideas to entertain us.

We were glad to welcome Gwen back last Monday (20th). What a life tripping around the world, here, there and everywhere.



Above Gwen Neve is glad to be back at Midway.

A very good trip was had to Cerberus. It is a very fine place and the largest training centre for the Navy in Australia. We also had interesting visit to the Police Academy at Narre Warren. Don't go there expecting souvenirs or to be asked to stay the night - it just isn't on!

We had a successful Bingo day (only playing for prizes) and a lovely soup and sandwich lunch, played Indoor bowls and Darts. In the future not all trips will be made on a Monday. We will continue to meet Mondays and trips will be made on Wednesdays or days to suit the majority. On October 27th a trip has been arranged to go to Darnum Music Museum. There is an old village there and piano and organs galore.

On Monday 1st of November our group is doing the Tea and Coffee's for the Beacy Bonfire Night.

On the 22nd. of October our group is going out for tea at the Central Hotel at Beaconsfield.

A wonderful Melbourne Cup Day is planned with lunch and games, so come along in your Cup gear and have a great day.

On the 8th. of December we will again go to the Dandenong Tafe for our Christmas Lunch.

Later in the year a trip to Phillip Island is to be arranged. Come and join us and enjoy life.

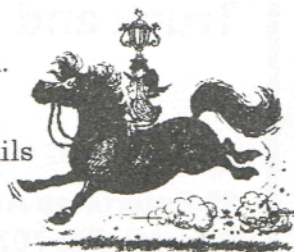
THE MIDWAY CUP

The Midway Group is having a light luncheon and some fun and games.

November 2nd. at 12 noon.
Cost is \$6.00 per person.

For tickets or further details
Ph. 707 1251 or 7073449

No Children Please.



EXCLUSIVE FERNS FLORIST & CRAFT SHOPPE

FLORAL ARRANGEMENTS

CUT FLOWERS

DRIED FLOWERS

INDOOR PLANTS

LOCAL CRAFT

HANDMADE GIFTS

CRAFT SUPPLIES



16 PRINCES HIGHWAY BEAconsfield
796 1490

BAD LUCK COMES IN THREES.

Eddy and Audrey Millen of Mavis Avenue have just ended a run of bad luck and friends and neighbours hope no more misfortunes come their way.

Most people 'write off' their cars on the road but for the Millens it happened at home in their front yard, when it rolled down the block and hit a tree that didn't move.

Shortly after that, Eddy had a heart attack that put him in hospital for a short while.

To cap things off, a gum tree later fell on their roof.

As the saying goes "Bad Luck only comes in threes" so you had better cut them all down before you have another heart attack Eddy!

We wish you both well after this recent run of bad luck.



BEAconsfield KINDERGARTEN NEWS.

Enrolments 1994:

Enrolments are being taken for 1994 in the Beaconsfield / Berwick area. For further information contact Beaconsfield Kindergarten on 707 1144.

Beaconsfield Fun Run:

Luckily the rain held off until after the run was over.

A Big Thankyou to our Sponsors:

Garleigh Trophies (Hallam)
Goodfellows (Beaconsfield)
Portman Butchers (Oakleigh)
Keogh's Pharmacy (Beaconsfield)

RALPH AND GWEN NEVE BACK HOME FROM ANGLING CHAMPIONSHIPS.

Beaconsfield welcomes home Ralph and Gwen from their trip to Portugal where Ralph competed in the Australian team in the World Championships for freshwater angling.

Countries from all over the world competed. The Australian team did not manage a high placing on this occasion although Ralph took out 'top weight' in his team. Ralph's individual results beat the Dutch Champion and did well against the well-known Italian Team Champion.

Not without its problems the Australian Team through lack



Ralph Neve Beaconsfield

of good sponsorship had some trouble with travelling and also with quality of the bait.

WELCOME HOME AND
BETTER LUCK NEXT TIME
RALPH.



FOOT CLINIC

TREATMENT INCLUDES:

- * Sports Injuries
 - * Flat Feet
 - * Heel and Arch Pain
 - * Corns and Callouses
 - * Ingrown Toe Nails
 - * Children's Problems
- (eg. Pigeon toeing, flat feet, "growing pains" etc.)

Quality insoles and foot supports (orthoses)

PODIATRIST/CHIROPODIST

Steven Hainsworth

B.App. Sci. (Pod), M.A. Pod. A.Dip. Th.

Suite 4, Beaconsfield Medical Centre

Ph. (03) 707-4922

Hours: Monday, Tuesday, Wednesday, Thursday
and Saturday mornings.

BEACONSFIELD PROGRESS ASSOCIATION ANNUAL GENERAL MEETING. WEDNESDAY OCTOBER 27TH, 1993.



Have you ever grumbled about road or footpath conditions in the town? Have you ever wished for better public facilities? Have you an interest in Beaconsfield's past or future? Are you concerned for the environment or for your children's future in the area?

Answer yes to any of these and there is definitely a place for you on the new Committee of the Progress Association. It's a friendly group and by no means a ratbag organisation. In the last 12 months the Association has constructively contributed to the well-being of the area. In the next 12 months it desperately needs good representation from all areas of the town. Listed below are some of the achievements and activities in the last year.

1. Secured representation in the Yakkerboo Princess contest.
2. Seeded the idea for a town barbecue and had one built.
3. Produced the Banner Newsletter: 1200 copies, bi-monthly.
4. Held public meetings with prominent guest speakers.
5. Liaised with Pakenham Council through correspondence on a constant basis.
6. Held a special History of Beaconsfield night meeting.
7. Organised Red Shield Appeal area collection for the Salvation Army.
8. Voiced community opinion about speed limits and parking.
9. Liaised with Council over Souter Street Road management plan.

10. Supported the move for new and improved footpaths.
11. Supported the new Community Centre with Association Representative.
12. Supported Children's Services Centre with a Committee Representative.
13. Pushed for improved lighting on Cardinia Creek bridge.
14. Organised Community Bonfire night and assisted with Carols.
15. Voiced community opinion over renaming of Princes Highway.
16. Reported back on Shire Draft Planning Strategies.
17. Raised the opportunity for Neighbourhood Watch for Beaconsfield.
18. Lobbied Council for new Princes Highway access from Stella Street.
19. Challenged authorities about heavy trucks through Beaconsfield.

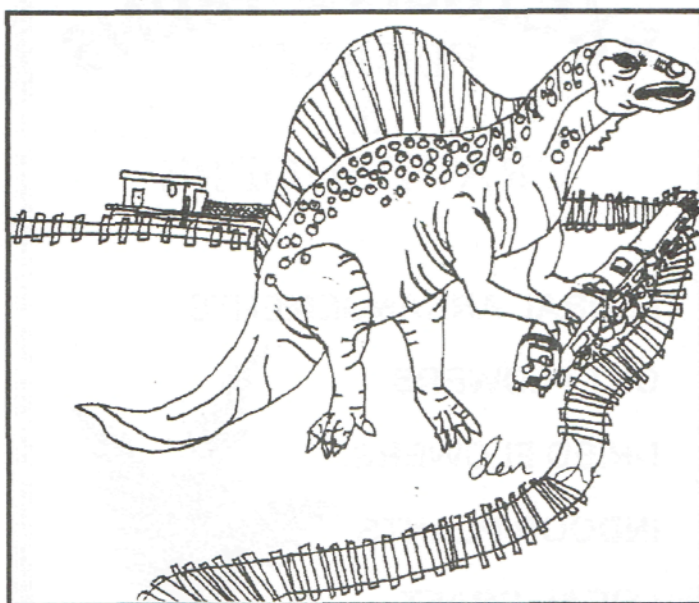
The Progress Association plays a very important part in the future of Beaconsfield. It is the collective voice of opinion of the Community. It is very important that it continues to operate efficiently.

IT IS VERY IMPORTANT THAT A FULL COMMITTEE BE ELECTED ON WEDNESDAY 27TH OCTOBER.

Help protect and shape the future and volunteer your services on Wednesday 27th October. Hope to see you there.



EXTINCT TRAINASAURUS (EARLY BEACONSFIELD)



DINOSAUR JOKES.

Q. What does a dinosaur call a train full of passengers?

A. Meals on Wheels.

Q. How do you make a dinosaur float?

A. Two scoops of ice cream, some lemonade and one dinosaur.

Q. How do you take a dinosaur's temperature?

A. With a 10 metre long thermometer.

QUOTATION - ANCESTORS

The man who has not anything to boast of but his illustrious ancestors, is like a potato - the only thing belonging to him is underground.

Sir T. Overbury.

WINE TASTING EVENING

Friday 22nd. & 29th. Oct.
7.30 - 9.30pm. At Beaconsfield Community Centre. Cost \$20 for 2 sessions (all wine supplied. Details Ph. 707 3449)

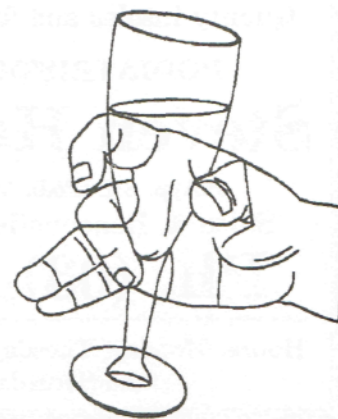
WINE

For us the wine drinking public Australia is certainly the "lucky country". Since 1986 we have seen six excellent to outstanding vintages 86, 88, 90, 91, 92, and 93.

On the shelves at the moment are the great 90 reds and 91 and 92 whites; and now arriving are the elegant drier 91 reds and 93 whites.

The 1990 vintage fruit produced some of the best flavours, colours, acids, sugars and overall balance seen for a long time. In fact it was a year in which whatever the price range of the wine it was difficult not to produce a good to great wine - and plenty of it.

The 1991 wines are from a longer ripening year and are less fruit driven but more elegant, complex with drier tannins. Indeed the "lucky country".



AKOONAH PARK - BERWICK - *Produce, Trash & Variety Market* **EVERY SUNDAY**

Opens 8.30 am. to 1.30 pm.

**OVER 140 STALLS INSIDE
AND MORE STALLS OUTSIDE**

CAKES * HOUSEHOLD GOODS * CLOTHING
JEWELLERY * CRYSTAL AND DINNER SETS
PLANTS * CRAFT * FRUIT AND VEGETABLES

**PHONE BOOKINGS ON
707 3103**

Keogh's Pharmacy OPEN 7 DAYS A WEEK

**Mon. - Fri. 9am. - 6.30pm
Sat, Sun. 9am. - 1.00pm
Public Hol. 9am. - 1.00pm.**

**Public Fax Service 796 1645
for
HOME DELIVERY
707 5187**

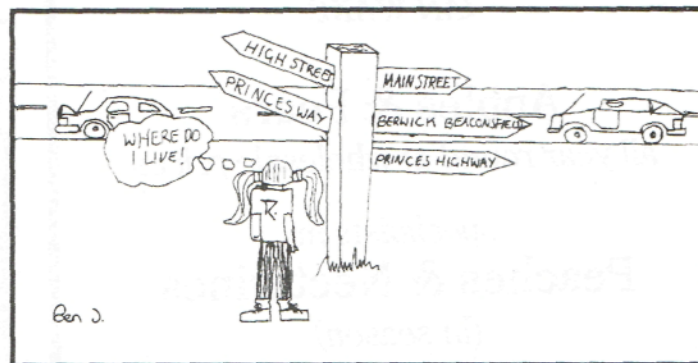
Agent for:
MEDIBANK PRIVATE
A.N.A.
LATROBE
COTY COSMETICS
CONSTANCE CARROL
AUSTRALIS
FRENCH PERFUMES

Invalid Equipment for Hire
or Sale.
Ear Piercing
Pregnancy Testing
Photocopy Facilities
Fax Facilities

Agent for: KODAK
24 exp film \$7.95
Reprints 1/2 Price for 10 or more
1/2 price Enlargements : 20 x 25cm

**Shop 2/16 - 24 Princes Highway
BEACONSFIELD**

PRINCES HIGHWAY NAME CHANGE.



The debate continues on! The Officers of the Pakenham Shire appear determined to change the name from Princes Highway (Beaconsfield) to Old Princes Highway.

A recent survey of businesses and residents has given rise to some energetic opposition to any name change at all. A firm decision to change has now been deferred by Council due to the amount of opposition by Beaconsfields Chamber of Commerce and the Beaconsfield Progress Association.

The survey did not give people the opportunity to say if they wanted Princes Highway retained. Some busi-

nesses missed out on receiving the survey. Furthermore Emergency Services were not consulted on the matter. They are being consulted now.

As reported elsewhere, Councillor Ron Metz of Pakenham Shire, Iona Riding commented that its bad enough already with two names for same stretch of road because Berwick has decided to retain Princes Highway and High Street down to where it enters Beaconsfield.

The Progress Association hopes that the wishes of most people in Beaconsfield are listened to and that PRINCES HIGHWAY is kept.

SOUTH EASTERN AIRPORT FEASIBILITY STUDY

The Progress Association has received a Registration of Interest Form with questionnaire and covering letter from the South East Airport Study Steering Committee.

With all the development in the South Eastern Growth Corridor, a proposal for a new regional airport has been put forward. The Steering Committee have appointed consultants to investigate the need for such a facility. Phase One of the Study is to establish if there is public need. Phase Two after the end of 1993 will then evaluate the site options and financial viability of the regional airport.

For anyone interested in this proposal and questionnaire then more information is available through the Progress Association. Alternatively the South East Airport Study Hotline is (03) 794 5396.



JENIAN ORCHARDS

IAN WAKE

Apples & Pears

all year round at wholesale prices

specialists in
Peaches & Nectarines
(in season)



Open 7 days a week 8 am. to 5 pm.

PAYNE ROAD BEACONSFIELD 3807

PHONE (03) 707 1549

Beaconsfield Chiropractic Clinic

CHIROPRACTIC IS:

- * an approach to health which utilizes the Body's inherent & natural recuperative powers.
- * a healing science which places emphasis on maintaining the structural integrity of the body.

CHIROPRACTIC IS:

- * covered by Workcare and Transport Accident insurance and private health care funds without referral.
- * suitable for all age groups for a wide range of conditions including sports injuries and chronic problems.

Telephone (03) 796 1110

~ all hours ~

DR. STEVEN PRATT

B.App.Sc. (Chiropractic)

**56 WOOD ST.,
BEACONSFIELD.**

BEACONSFIELD TO BANGLADESH RETURN.



Beaconsfields' Nicole de Hamer aged 20 has returned after a months mission to Bangladesh with a team of six Rovers. Leaving her Adamson Road home on 4th September Nicole went off to experience and achieve something that few do in a lifetime.

As team leader her aim was to visit remote villages outside of Rangpur, with guidance of locals, to teach basic principles of health and hygiene. First off Nicole had to get used to 35° to 45° C heat with humidity to match. Since few of the villagers had ever seen white people, Nicole and her team were a constant source of interest. Basic words of their language had to be learned quickly to communicate.

Up to 90 village huts a day had to be visited where Nicole administered worming tablets, vitamin A pills and had to immunise children too.

Nicole De Hamer comforts young child.

Proper toilets were a rarity so even in this extreme heat, Nicole had to draw on her Australian Scouting experience and dig proper latrines for the natives. Nutrition was average, said Nicole, with plenty of rice and fish in their diet. Cows, goats, ducks and chickens were common in and around their huts. Vitamin A however was very deficient in their systems which caused much night blindness that had to be cured. The villagers clothing was very basic but adequate. Transport unlike our Western World was confined to old bicycles and rickshaws.

For Nicole it was a very rich experience in a poor country. Lasting impressions are of a beautiful and peaceful land where the inhabitants without any wealth maintain hearts full of happiness. Well done Nicole for having the courage to tackle such a trip for such a worthwhile reason.



WHAT'S HAPPENING AT COUNCIL

Cont. from page 1.

Council 1993 Budget

Budget time is never easy, but this year has been particularly difficult, especially when other levels of Government are reducing their financial support and a perception of social matters needing to be addressed, along with infrastructure requirements for a growing munici-

pality. Council Officers and Councillors worked long and hard in an attempt to achieve a nil rate rise, but this was, unfortunately, impossible, due to the above mentioned factors. However, a good result was achieved by only a 0.6% increase, which is well below the level of inflation and, at the same time, providing a high level of Service.



BEACONSFIELD AUTOMOTIVE SERVICES

Michael Perks

Qualified Motor Mechanic
Licenced R.W.C. Vehicle Tester
& Repairer
V.A.C.C. Accredited Auto Repairer

Factory No. 1
94 Princes Hwy.
BEACONSFIELD



PHONE: 707 4468

BEACONSFIELD LODGE MOTEL

PHONE 7071454
1 Souter Street, Beaconsfield

Modern units in a quiet garden setting.

Facilities include colour TV, phone in all rooms, fridge, ensuite bathrooms, electric blankets, heaters, fans, clockradio, tea and coffee making facilities. Restaurant and playground opposite motel. Shops and hotel within 500 meters.

*** * * RACV RATING**

BEACONSFIELD GUIDES AND BROWNIES NEWS



On Monday the 20th September the Beaconsfield and Upper Beaconsfield Guides got up early and left for Moorabbin Airport. At the Airport we boarded a King Island Airlines Plane to King Island. While we were over there we saw the fairy penguins of King Island. It was very natural and we were able to see the penguins close up.

We saw the museum it was very interesting and we were able to identify the places we went later in the week. The next day we went swimming at the local primary/ high school for about 2 hours.

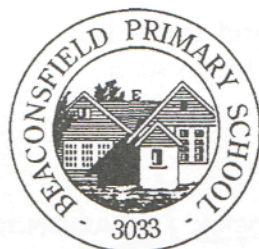
Touring the northern part of the island was fun. We went to seal rocks and a couple of walks to the edge of the island and to a calcified forest.

After touring the northern part of the island we toured the southern part. We visited a dairy, the kelp farm, a farm where the sheep were being shorn, a bee farm, all of which were able to go inside and have a look at very close

. Of course we visited the King Island Dairy where we all bought up big on cheese and watched a video.

It was very windy over there and it took us ages to set up the tents and we were very anxious every time we came back in case our tent had blown over (none did!). All of us guides slept under canvas, but the leaders slept in one of the four huts. Everybody on the camp made new friends and had a wonderful time. I'm sure all of the guides would like to thank Annette, Jackie, Margaret, Monique and Angela. A special thankyou to Angela who organised, ran, and put up with us all for 5 whole days. Another thankyou to Monique who was a wonderful cook and I'm sure we all appreciated her great cooking. It really made the camp worthwhile. All in all we had a terrific time.

Written by Trina Seath and Jessica Mills.



BEACONSFIELD PRIMARY SCHOOL

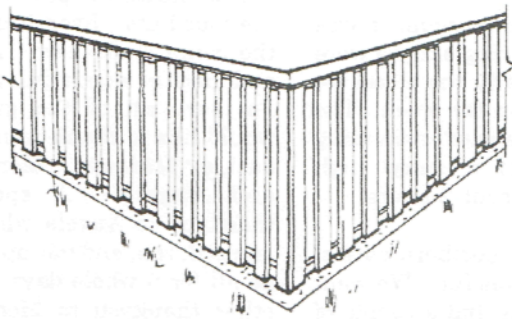
**SCHOOL PREP. ENROLMENTS
NOW OPEN**

**TOURS OF INSPECTION
OR AN INTERVIEW
CAN NOW BE ARRANGED.**

**Phone Principal
Mr Tony Ross 707 1510**

BEACONSFIELD TIMBER AND HARDWARE Pty Ltd

DO-IT-YOURSELF PROJECT No. 10



All materials and easy-to-follow plans to build this Pool Fence are available from

**BEACONSFIELD TIMBER
AND HARDWARE Pty Ltd.**

We can supply all tools and materials for any projects small or large at a very reasonable price.

8 EXCAVATE POST HOLES: Excavate post holes to 750mm depth, accurately centred on pegged point. Note: You should devise some method of allowing water to drain away from bottom of posts. In free draining sandy soil this is not a problem, but in clayey soil you could set the post on a tamped layer of free-draining material like gravel, pebbles, ashes, etc.

9 MARK RAIL POSITIONS: Mark position of rails on posts as indicated in this sketch. (Note that overall height of fence exceeds SAA minimum height.) We suggest that fence be built to use 75 x 25mm DAB hardwood or 75 x 38mm DAB softwood slats (or standard 75 x 25mm hardwood panel round decking) in 1.2m lengths. With cap rail (minimum thickness 25mm) and ground clearance of 50mm overall height above ground line becomes 1275mm. Diagram below illustrates these dimensions.

10 LOCATE THE POSTS IN HOLES: but do not yet attempt to fit in. Instead remove soil or fill hole to give each post the desired height above ground as set by string line. For a pool safety fence, the restrictions on minimum height above ground, and maximum gap below bottom edge, will tend to limit flexibility in design. If soil conditions change (i.e. rocks, etc.), reduce the stipulated height of posts above ground could be marked with string line and given length posts could be sawn to length. Firmly tamp soil around each post to about 450mm depth, ensuring that posts are vertical and located correctly using string line and spirit level.

11 CUT RAILS: Cut rails to required lengths as indicated in sketch. That is, the first and last rails in both upper and lower line have allowance for end post thickness but thereafter all rails are double or more panel lengths and butt-jointed at midpoints of posts.

In our example (see Step 5) dimension "P" should be standard double spacing of 3750mm (5750mm). Dimension "S" would be approximately 3750mm + 50mm = 3800mm. Note that with adequate planning, rails of three panel lengths could be used, but avoid putting butt joints in upper and lower rail on the same post if possible. (50mm is half the width of 100 x 50mm sawn posts.)

12 LOCATE RAILS: in position on the posts by fastening them with one nail per post until all rails are in place. Follow the joining pattern shown in Step 11 which provides joining both bottom and top rails on the same post. But joints should be located on centre line of posts. Note: Rails and slats must be on the outside of fence. That is on the side away from the pool.

13 CHECK ALIGNMENT: of post by string line and run of rails by eye and adjust if necessary, then complete nailing fence using two nails at each post. Where butt joints occur, pre-drilling nail holes in ends of rails is recommended.

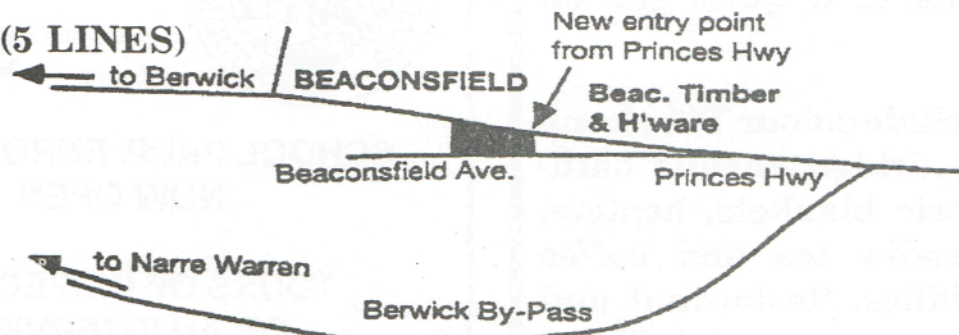
14 BOLT RAIL: Drill post holes in rails and posts. Fit rails to posts using bolts and nuts, but plane bolt heads on outside of fence rail. Hack saw off excess length of bolt and spot prime newly exposed metal.

15 CEMENT POSTS: Complete consolidation of posts in holes using a shallow concrete collar around all posts which could be below soil level if cleared or included in a mowing strip at fence line. Fill up to ground line around posts. Allow concrete to set for one week before proceeding to further work.

16 SAND OFF ALL SHARP CORNERS: on posts and rails, or otherwise smooth off rough surfaces and corners. Apply first coat of selected finish.

17 CUT AND FIX CAP RAIL: Cut long lengths of cap rail and nail 1m to top rail, locating on rail as in diagram. Round off all long edges and ends of cap rail. Prime coat sawn ends of each piece, but preferably the whole piece could be coated at this time also, before completely fixing. Join cap rail at corners using mitre joint.

707 5055 (5 LINES)



BEACONSFIELD TIMBER AND HARDWARE Pty Ltd
Lot 2 Beaconsfield Ave. Beaconsfield Tel. 707 5055

Beaconsfield Meat Supply

23 Wood St. Beaconsfield 3807

Contact Rocky on 707 1163

**FREE HOME
DELIVERIES**



EVERY \$20 YOU SPEND
AT BEACONSFIELD
MEAT SUPPLY
YOU HAVE A CHANCE
TO WIN AN AKAI
MICROWAVE OVEN
VALUED AT \$349.

DAILY SPECIALS

DIARY DATES

- 25th October
Farewell to Melva Behr School Assembly
- 27th October
Beaconsfield Progress Association A.G.M.
- 1st November -
*Beaconsfield Community
Annual Bonfire Night.*
- 6 & 7th. November -
*Antique Workshop
Beaconsfield Community Centre*
- 6 & 7th. November -
Berwick Family Fun Festival.
- 26th November -
Closing Date for Dec. Banner.
- 14th. December -
*Free Afternoon Tea for all of Beaconsfield
Community Centre.*
- 16th December -
School Holidays Start.
- Watch out for the date of "Carols By the Creek"

RECIPE CORNER

PUMPKIN SCONES

- 2 cups boiled dry Pumpkin
- Pinch salt and pepper mace
- 1 cup wholemeal flour
- 3 eggs well beaten
- Little milk
- $\frac{1}{3}$ cup raw sugar
- vegetable oil for frying
- Lemon juice and sugar



Beat ingredients together to form a thick batter. Drop dessertspoon of the batter into deep hot oil and fry until golden brown. Serve with lemon juice and sugar.

GOOD LUCK

BRICKBATS AND BOUQUETS

Bouquet: To Vic Roads that changed their minds about the speed limit through Beaconsfield. Instead of going up to 80kmh, its been put down to 70kmh.

Brickbats: To those that graffitied in Beaconsfield. Hope you get caught red handed.

Brickbats: to the train travellers who use Wood Street as a speedway. It is the same cars run late for trains every morning endangering residents' lives. Those people simply need to organise themselves to leave home five minutes earlier than they do at present.

Keep up the good work the Banner grows better every issue).

Myrtle

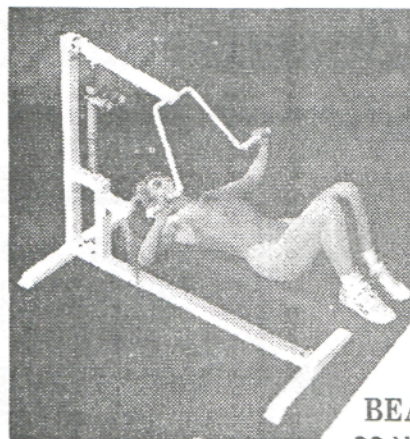
Bouquet: To the person who helped Alison Incoll when she was injured on the footpath in Wood Street by a young child riding a tricycle.

Friends wish her a speedy recovery.



BODY SHAPING SPECIAL

Beaconsfield Squash & Fitness Centre



Now presents the latest in fitness technology with its
TOTAL BODY CIRCUIT
Special introductory offer

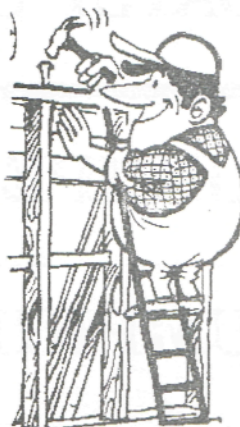
12 months only **\$249**

Casuals welcome

Bookings **707 2929**

BEACONSFIELD SQUASH & FITNESS CENTRE
29 Wood St, Beaconsfield 707 2929

Beaconsfield Home Maintenance Service



Build, Fix and Replace

- ★ Painting - interior & exterior
- H Carpentry, Tiling, Renovations
- ★ Pergolas, Decking, Fences & Gates
- ★ Roofing & Spouting
- ★ Concreting, Brickwork

All work guaranteed - Pensioner discounts
15 years experience

for a free quote on small or large jobs

Ring 707 2517
Mobile 018 174913

SCOTT HOLDINGS PTY LTD
For prompt, friendly service with

**BOBCAT
BACKHOE
TIPPER AND
RETAINER WALLS**
**TELEPHONE (03)
707 1685**

Stuart Scott
PAYNE RD. BEACONSFIELD

THE STEERING JOINT

WE AIM TO BE THE BEST AT WHAT WE DO

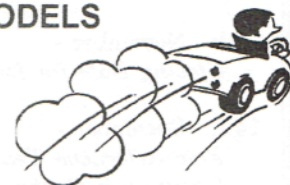
BECAUSE YOUR CAR DESERVES PEOPLE WHO CARE

- ★ FULL MECHANICAL REPAIRS
- ★ SERVICING OF ALL MAKES & MODELS
- ★ ELECTRONIC TUNING
- ★ BREAK & CLUTCH REPAIRS
- ★ FRONT END REPAIRS
- ★ WHEEL ALIGNMENT
- ★ WHEEL BALANCING ON & OFF CAR

FREE PICK UP & DELIVERY LOCAL AREA

EVERY VEHICLE SERVICED AT
THE STEERING JOINT
IS DETAILED FREE! OF CHARGE
YOUR CAR WILL LOOK AND FEEL GREAT

ALL WORK GUARANTEED



**FREE
NO OBLIGATION
QUOTES**
12 WOOD STREET
BEACONSFIELD
PHONE 707 3393



- * COWHIDES
- * DEERHIDES
- * CAR SEAT COVERS
- * SHEEPSKIN FLOOR RUGS
- * UGG BOOTS
- * MOCCASINS
- * SLIPPERS
- * BABY UNDERLAYS
- * MEDICAL RUGS AND AUSTRALIAN SOUVENIRS WITH A DIFFERENCE.

REASONABLE PRICES. OUR FRIENDLY STAFF WILL MAKE YOU WELCOME. WELL WORTH A BROWSE.

HIWAY SKINCRAFTS. PRINCES HIGHWAY.
OFFICER

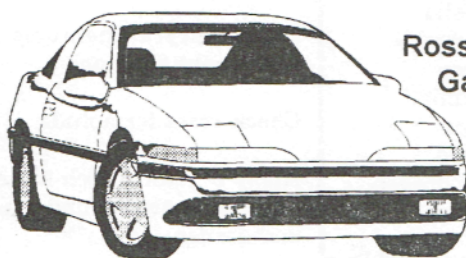
Ph. (059) 432 339.

OPEN 10 - 5 WED. - SUN.
CLOSED MON. - TUES.

BEACIE SERVICE CENTRE

**Servicing &
Mechanical
Repairs**

**Now Licenced
Roadworthy
Testers**



Ross Mercier
Gary Bryan

ALL WORK GUARANTEED

796 1401

122 Princes Hwy., Beaconsfield

OUR NATURAL WORLD



Peter Hansen

HOMOEOPATHY is a form of natural medicine that is completely mysterious to most people.

It takes years of practice to even begin to understand its basic functions, so as a consequence most people put it in the "too hard" basket and forget it.

To define it, we say it is a system of medicine based on the principle, that agents which produce certain signs and symptoms in health, also cure those signs and symptoms in disease, and that the more the drug is diluted, the more powerful it becomes.

The British Royal Family, from the Queen down, have been attended by Homoeopathic Doctors for over 100 years now, starting with Queen Victoria to the present time. The Queen never travels without her supply of remedies, such is her belief in their effectiveness.

Homoeopathy is a "whole person" medicine. A detailed history is taken of the patient looking at every possible aspect of that person, so that the practitioners can perceive "an image" of his patient. It is this "image" that he prescribes on taking into account the purely medical symptoms of

the case, but not prescribing on them alone. It is "personal" medicine only the actual disease itself being secondary to the uniquely original personality of the patient.

There is a basic saying among Homoeopaths, "We treat the patient and not the disease". This is sometimes hard for Medical people to understand, and even harder for lay people, who are new to this type of healing.

Homoeopathy works according to two basic principles. First the principle of "let life be cured by life", and second, the principle of the minimum dose.

Modern medicine works on the principle that illness can be treated by patient drugs to block natural pathways in the body, or to attack the bacteria present. Homoeopathy is based on the belief that the body can cope with most things itself (except of course mechanical injuries that need surgery) and that by activating the bodies own natural healing abilities, cure can be brought about in a safe, sure and gentle fashion. There are no toxic components to Homoeopathy and no "side effects", so called. There are often "reactions" to the remedies but these are looked for signs that the medicine is working as intended.

Most Homoeopathic preparations are extracts of naturally occurring substances like plants, animal material and natural chemicals. Some are synthetic, and Homoeopathic remedies can be made out of anything at all if the need is there. They are "vibrational" medicines of the highest order, and wonderfully suited to babies and old people.

P. HANSEN

GOODBYE BEHRS

Melva, Joe and Amy are leaving Beaconsfield to live in Sunbury. The Beaconsfield Progress Association thanks Melva and Joe for their en-

thusiastic support and participation. Best wishes Joe with your new job and hope you settle in quickly Melva in your new surroundings.

THE WILLOWS NURSERY

Fully qualified, ex-teacher of Horticulture John Baker gives you free advice on all Your gardening problems



THE WILLOWS NURSERY
Cnr. Princes Hwy & Glismann Rd., Beaconsfield

7074852

OPEN 7 DAYS A WEEK 9am-5.30pm

BLUE GUM PARK - EASTSIDE.

(Part of the Blue Gum Group of Mobile Home Parks)

Brunt Road, Beaconsfield.
(Just off Princes Highway)

For Peaceful Living under the
control of our resident managers,
"YOU CAN'T BEAT IT!"



- * Quiet Treed settings.
- * Mobile homes available for short and long term accommodation OR bring your own home and we settle you in.
- * Large in ground pool, Tennis court and B.B.Q. area.
- * Spotless amenities block.
- * Competitive Rental rates.

"Pop in and see Barbara or Barry Duke, it would be our pleasure to be of service to you."

Phone (03) 707 2753.



A TIMELY NOTE FROM PAKENHAM
CITIZENS' ADVICE BUREAU inc.
66 MAIN STREET, PAKENHAM.
3810. TEL. (059) 41 2377.

DO YOU NEED TAX FREE HELP?

If you do, don't leave it too late. Contact the Citizens Advice Bureau for an appointment with a trained 'Tax Help' Volunteer and take advantage of the opportunity to take the confusion out of your tax return but remember there are not many weeks left for getting those returns in to the Taxation Office. Phone (059) 412 377 and see if you qualify for assistance.

Here's another offer too good to miss! Mountain District Health Service is offering a "Home Safety Inspection" for just \$3.00. This is for the older person and could help you prevent a fall by advising you on the type of situation that contributes to broken bones from some hazards in the home, often something we have lived with for years but as we grow older may be an unsuspected problem. Give Mountain District Health Service a call and at \$3.00 it will be money well spent.

If you are disabled or responsible for the care of a disabled or elderly person, the "Datech Expo" at Olympic Park Exhibition Centre, Swan Street,

Melbourne could interest you as it will have on display a full range of the latest aids and equipment to make life easier and safer as well as lightening the load of the Carer. This exhibition is from Thursday 7th October with Admission for adults \$4.00 Concession \$2.00 and Children Free.

Have you called in at our new location in the shop at 66 Main Street, Pakenham, just up from the roundabout at the corner of John and Main Streets? Next time you are shopping pop in and see the wide range of information and pamphlets available and if you have some time on your hands perhaps you would consider becoming a Volunteer, we would certainly welcome you to this satisfying way of helping to keep your community informed.

The Citizen's Advice Bureau is an information and referral service, free to everyone in the community. Just call in or phone the Bureau on (059) 412 377 - we are open from 10.30am to 2.30pm Monday to Friday. The Citizens Advice Bureau - KEEPING VICTORIA INFORMED.

What to Plant in October.

Seedlings Flower

Alyssum	Impatiens
Aquilegia	Lobelia
Aster	Marigold
Balsam	Pansy
Begonia	Petunia
Carnation	Phlox
Cosmos	Salvia
Dahlia	Snapdragon
Delphinium	Zinnia

Seedlings Vegetables

Beans	Lettuce
Beetroot	Onions
Broccoli	Pumpkin
Cabbage	Silver beet
Capsicum	Tomato
Cucumber	Zucchini

Maintenance Program for October

Plant chrysanthemums in permanent positions.

Check roses for aphids.

Apply organic mulch material if necessary around plants and garden.

Check plants for staking or tying. Check plants for damage from pests and disease.



John Baker
The Willows
Nursery

BEACY'S NOTICE BOARD

South Eastern ARTWORKS SIGNS & DESIGNS

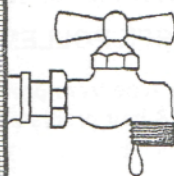


Signwriting for

- Business premises
- * Boats
- * Truck Lining
- * All indoor and outdoor sign advertising

Graeme Minotti
Mob: 018 344 509
707 2546

PLUMBER



Noel Tonks

707 5153

General Plumbing
Gas supply and installation
Sewerage and Maintenance

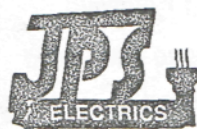
Reg. 15753

DANDENONG Removals

Peter & Therese MITCHELL

Phone: (03) 707 5606
or
Mobile: 018 357 112

ELECTRICAL CONTRACTOR



Domestic, Commercial,
Industrial
installations and repairs

PETER STEELE - R.E.C. 8772

Phone (03) 707 4906
Mobile 018 392 370

23 Hudson Street, Beaconsfield.

TYREPOWER

RAY LAWN
Proprietor

BERWICK TYREPOWER
Enterprise Ave, Berwick, Vic. 3806
Tel (03) 707 3177 Fax: (03) 796 1836

COMPUTERS

Quality Products
Quality Service
Competitive Price



**PLATYPUS
TECHNOLOGY PTY. LTD.**
TECHNOLOGY TOOLS FOR INDUSTRY

Platypus Technology P/L
124 Princes Highway, Beaconsfield

Ph. (03) 796 2302
Fax. (03) 707 5376

- * Landscaping
- * Rotary Hoeing
- * Grass Slashing
- * Blocks Cleared
- * Lawn mowing - Ride on mower & Slashers
- * Small 4WD front end loader for hire
- * Paths and Barbecue areas paved
- * Fruit trees sprayed
- * Vegetable gardens hoed and prepared for spring

Phone Graham **796 1297** or
For FREE QUOTE **018 563456**

ENTERPRISE SCREENS & SECURITY DOORS

Hollands, Vertical Drapes, Venetians
Canvas Blinds

62 Enterprise Avenue
Berwick 3806

Phone 796 1088
A.H. 796 1379

BEACY'S NOTICE BOARD



Forever Living Products

Sylvia Bence
INDEPENDENT DISTRIBUTOR
3 Mahon Ave. Beaconsfield 3807 Ph. 707 1640

HEALTH BENEFITS OF ALOE & BEE POLLEN

Stabilised to Pharmaceutical standards, Aloe Vera products are used for:- Burns, arthritis, skin & hair problems, slimming, asthma, & stress management.

Royal Jelly, rich in Vit. B, for cell growth. Use Propolis, nature's own antibiotic, to ward off colds, sickness etc.

MELALEUCA LODGE CNR BRUNT RD., PRINCES HIGHWAY



Modern accommodation
including deluxe spa units

Wedding Receptions
Conferences
Functions

Contact Neilma or Graeme
for Inspections or Bookings **796 1044**

C.A.L.F.

Childrens Animal Learning Farmyard

Large variety of farm animals to pat & feed

Only Group Bookings Available
or

We can come to you with our

MOBILE FARM ANIMAL NURSERY

Enquiries: Sheryl Campbell Ph. 707 5263

Berwick

Wood Machining

TIMBER CUT AND DRESSED
TO YOUR REQUIREMENTS

OPEN 7-30 AM MONDAY TO SATURDAY

4/94 PRINCES HWY.
BEAconsfield 3807

PH. 796 1861

Dr. Robert A. Panjkov
B. D. Sc. (Melb.)

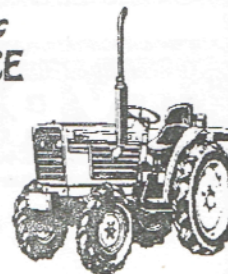
DENTIST

Unit 4 87 Wood Street
Beaconsfield 3807

Ph. 707 3508

GRASS SLASHING & FARM MAINTENANCE

Bryan Park
Phone: 707 2007
FREE QUOTES



• Fences Repaired
• Chainsaw work

• All Types of Paving
• Rubbish Removed

MINIBAH RECYCLING DEPOT



ALUMINIUM CANS
BOUGHT
7 DAYS A WEEK
10am. - 2pm.

Best Prices Offered.

Quarry Rd.
Narre Warren

707 5725

MINIBAH FACTORY SALES

78 Enterprise Ave. Berwick
We Will Save You Money

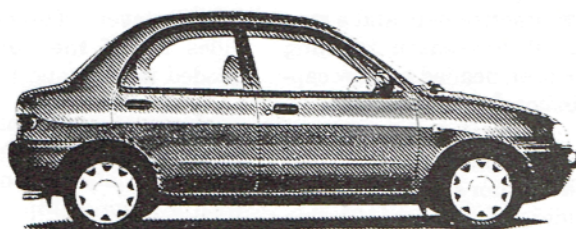
Reconditioned washing machines, dryers, fridges &
freezers. **SECOND HAND ITEMS** - big and small
Including kitchen items and bric-a-brac.

Phone (03) 796 2187

OPEN 8.30 - 4.00 Mon. - Fri. 9.00 - 12.00 Sat.

OUR OPENING SPECIALS CONTINUE

MAZDA 121

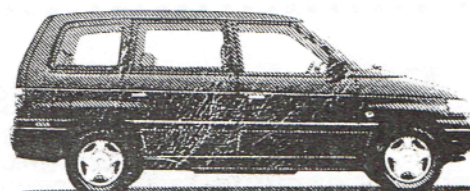
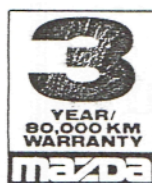


**WITH THE LOT
FROM \$14 990**

(+ DEALER STATUTORY CHARGES)



**INSPECT NOW
MAZDA M.P.V.**



MOVE MORE PEOPLE WITH MORE COM-
FORT TO MORE PLACES WITH MORE
POWER IN MAZDA MULTI PURPOSE
VEHICLE - TEST DRIVE TODAY.

Great Service Specials

For bookings phone (059) 411 855

Lube and Filter Service

\$35

INCLUDES Up to 5 litres of premium grade oil and fitment
of oil filter for most passenger and light commercial
vehicles (Excludes diesel engines)

PRECISION TUNE UP

\$65 \$70 \$80

4 CYLINDER 6 CYLINDER 8 CYLINDER

INCLUDES installation of spark plugs, inspection of choke,
throttle linkage, high tension leads, distributor cap, exhaust
emission, adjustment of idle and timing for most popular models.

**BRAKE
RELIN** FROM
\$39*
PER WHEEL

INCLUDES: Drum or disc
machining, replacement of
lining or pads repacking
wheel bearings.
On most passenger vehicles.
* Excludes hydraulics

FREE 21 POINT SAFETY CHECK WITH ANY OF THESE SERVICES BOOKED.

Used Car Specials

GEMINI SEDAN "SL" 79 MODEL 1.6 MOTOR 4 SP. MAN. GOLD DUCO GOOD CONDITION \$3999

FORD FALCON "GL" 87 MODEL 4.1 EFI MOTOR, POWER STEERING, AIR CON. \$9499

LOADS MORE TO CHOSE FROM

Blanchards

PAKENHAM

MAZDA

Princes Highway,
Pakenham, L.M.C.T. 1148

Telephone: (059) 411 855
A.H. (059) 685 277

Nature heals with natural remedies. Drug free treatment ensures reliable results without side effects, in acute or chronic illness.

*Beaconsfield
Naturopathic Clinic*

Peter N. Hansen

N.D. DIP. HOM. C.I. A.T.M.S.
NATUROPATH - HOMOEOPATHIC
MEMBER OF AUSTRALIAN FEDERATION OF HOMOEOPATHS.
MEMBER OF INTERNATIONAL FEDERATION OF
HOMOEOPATHIC PHYSICIANS.
MEMBER OF AUSTRALIAN TRADITIONAL MEDICINE SOCIETY

**Beaconsfield
Medical Centre**

Suite 3, 39 Wallace St., Beaconsfield, 3807
Tele.: (03) 707 3892, A.H. (03) 707 1214

Qualified Iridologist, Herbalist, Homoeopath (classical), Nutritionist,
Tractile, Therapist, Massage, Bach remedies & Bush Flower Essences.

Special interests: Emotional & Behavioural problems.

KEN BRYAN 707 3864

K.B. TRANSMISSIONS

Automatic Transmission
Specialists

31 ENTERPRISE AVENUE.
BERWICK, 3806

K.B. TRANSMISSIONS

Automatic Transmission Specialists

**31 ENTERPRISE AVE.,
BERWICK**

PHONE 707 3864

**BEACONSFIELD
CRICKET CLUB INC.**

Beaconsfield Cricket Club Inc. is up and running again for 1993/94. With a lot of effort we have extended our training facilities with two new practise nets and a successful pre-season training has been headed by new captain/coach Derek Brown.

We are fielding 5 senior sides and 3 junior sides (Under 16, Under 14, Under 12) this season, filling all of the available grades in the West Gippsland Cricket Association. Seniors play on Saturday afternoons and train Tuesday and Thursday nights from about 5.00 p.m. at the Emerald Road ground. Juniors play on Saturday mornings and train Wednesday nights at about 4.30 p.m.

Subscriptions for this season are \$55 for seniors and \$25 for juniors, with reduced rates for unemployed, students and families with more than one junior player. The club provides all of the equipment needed to play and train.

Last season saw four of our sides reach the finals, although we were unable to come away with a premiership. We are keen this season to see the club go one better, and improve upon the success enjoyed during the last few years.

New players are always welcome, especially in the junior sides. If there are any queries, please call the president, Alan Tomamichel on 707 2380 or the secretary Alan Sauvarin on 704 8931.

**BEACONSFIELD
TENNIS CLUB NEWS**

In the community we have the Beaconsfield Tennis Club which is situated in wonderful bush surroundings in the Recreation Reserve off the Emerald-Upper Beaconsfield Road. After extensions were added to the club house last year we now have one of the largest tennis club rooms in the district, due to the hard working committees, members and friends. We run social functions which non-members are very welcome to come to.

The Club offers many opportunities to play tennis. Night Tennis which is open to members and non-members.

**MONDAY NIGHTS -
A. GRADE "MIXED"**
Any enquiries please contact:
GREG MENZIEL 707 1053

**TUESDAY NIGHTS -
BEGINNERS TO B
GRADE "UNISEX"**
Any enquiries please contact:
MARGARET CHATFIELD
707 2016

**THURSDAY NIGHTS
A & B GRADE "MENS"**
Any enquiries please contact:
BRIAN CROCKETT 707 3425

**MIDWEEK LADIES COMPETITION - TUESDAY,
WEDNESDAY, THURSDAY**
Any enquiries please contact:
PAT SCHELLING 707 1839

**SATURDAY MORNING
JUNIORS:**
Any enquiries please contact:
HEATHER SAUNDERS
707 2081

**SATURDAY AFTERNOON
SENIORS**
Any enquiries please contact:
RUSSELL CLACY
(059) 413 200

We have a highly qualified and caring person in coach ROBERT KEIGHEY, he may be contacted on 803 9397.

To become a member, please contact JENNY SHINNERS on 707 2575. Also our courts maybe hired, CONTACT MARGARET CHATFIELD on 707 2016.

Paul Sadler Swim School



15 YEARS EXPERIENCE FOR RICHARD

As one of the Directors of the Paul Sadler Swim School Beaconsfield, Richard Evans brings a wealth of teaching experience to the Beaconsfield area.

Richard started as a competitive swimmer competing in Victorian and Australian championships as a junior. When he finished his swimming at the tender age of 19 he started teaching at the Paul Sadler Swim School at BRIGHTON and has worked at BRIGHTON for 14 years.

Richard says our teaching methods have been proven over a period of some 17 years. Our aim with the little ones is to teach them survival in the deep water and to make them water safe as soon as possible.

My ultimate aim is to emulate BRIGHTON and have all our kids go through our system and do their 4 km GOLD swim. It is fantastic to see our kinder kids starting in our toddler pool and then a few years down the track doing their 4 km GOLD swim.

40 - 50 Princes Hwy., Beaconsfield 3807 Ph. 796 2288 Fax 796 2311

BEACONSFIELD GARDEN SUPPLIES

For friendly,
efficient service



- * Sand, Screenings and Cement
- * Pavers and Terra Cotta Agi Pipes
- * Redgum Chips and Pine Bark
- * Sleepers (old and new)
- * Scoria and Rocks
- * Handyman Hardware

WE CATER FOR ALL BUILDERS,
LANDSCAPERS AND TRADESMEN
-Deliveries 7 days a week-

"Call in and say Hello"

94 - 100 Princes Highway, Beaconsfield
Telephone (03) 707 5144

FOR QUALITY MEATS AT
REASONABLE PRICES
SEE YOUR FAMILY BUTCHER

R. & M. PARKER.

Shop 1 /16 Princes Highway Beaconsfield
Phone (03) 796 1774

- * Home Made Sausages
- * Marinated Pork Chops
- * Porterhouse Steak
- * Chicken Maryland
- * Chicken Schnitzel
- * Chicken Fillets
- * Lamb Cutlets
- * BBQ Chops



FREE HOME DELIVERY

Cathy's Market Place

Now Open
We have

- * A large range of new & pre-loved clothing *
- * Bridal - After 5 *
- * Shoes * Bric-aBrac *
- * Plus lots of Household Goodies *

Open 9am. til 5pm. Mon. to Fri. 9am. til 1pm. Sat.
10am. til 2pm. Sun. Late night closing Nov. 1st.

Shop 1/4 Princes Hwy., Beaconsfield.

Phone 796 1877

WELCOME HOME

Welcome Home from your neighbours to Netti who has recently come back from an overseas trip to Canada and Holland.

GET WELL SOON

Residents and friends of Anne Goodman, from Kenilworth Ave., wish her well in recovery from her recent illness.

BIRTHS

Congratulations to Sue and Tim Stanes on the safe arrival of your son, David.

CONGRATULATIONS

to Beaconsfield Primary School who are celebrating winning the Victorian Garden Award for the best Gardens/Environment, South of the Yarra.

The State Judging Panel, Kevin Heinze, Paul Crowe and Jane Edmondson are dropping in by helicopter to present the award on Tuesday 26th October.

**CLOSING DATE FOR
THE NEXT BANNER IS
26th. November 1993.**

MARKET PLACE

WANTED

Bluestones, no quantity too small
paying \$1.60 each. Ph. 7962302 B.H.

**Like to advertise in
Beacy's own paper
"THE BANNER"**

Fill in the form and leave it at
the Post Office.

Name of Advertiser.....

Phone Number.....

Address to which account is
to be sent.....

Message.....

Rates for advertising:

1/4 page in a single issue \$25.
1/2 page in a single issue \$48.
Full page in a single issue \$80.

All above rates 20% discount if
paid in advance.

Beacy's Notice Board \$10 per
issue
Market Place \$1 per line per
issue.

Akoonah Park Market News

Vol. 1 No. 3

October 1993

HISTORY OF AKOONAH PARK

By Jack Rae



Jack Rae

Akoonah. An aboriginal word meaning running water. This describes the Park's situation beside the Cardinia Creek. The area was once the home of the Bunerong tribe of Aborigines who camped on the banks of the creek getting fresh water mussels and native fish etc.

The first land known to have been ploughed and cultivated in the Berwick area was around the Park. The area was Crown land at the time Victoria was proclaimed as a state on 1st July 1851. Soon after part was reserved as a park in 1861, the adjoining 120 acres was gazetted as the Berwick Common. This was nearly all of the Eastern Slopes of the Berwick Hill.

The Berwick Shire was established in 1868 and in 1888 an area was allocated by the Crown Lands Department for the purposes of a Pound. This is the area now known as Akoonah Park. About 1950 the Berwick Agricultural Society was to lose their Show Ground on Clyde Road now known as Buchanan Park. With considerable foresight Mr. G.P.H. Wilson CMG instigated a move to retain the

old Pound Paddock as the future home of the Berwick Agricultural Society. We are privileged to now have an excellent facility for the current community.

The 1st working Bee with some 13 tractors owned by the members of the Society was held in 1951. Most of the area was covered by tee-tree, blackberries and other noxious weeds. The Pound house where the Late Mr & Mrs Perc Allison lived was between the sheep shed and the creek. Kevin Allison, current President of the South West Football League, grew up in the house along with his 2 brothers.

It took several years before the 1st Show was held with all of the development work having to be done with very little money. Several families donated an amount of money and the sheep shed was built; also assistance from the Government with Grants of money for the Showing of Stud stock. Fred and Jack Rae hand grubbed a large tree in the centre of the arena with the assistance of a Forest Devil, a large implement with winch and cables hand oper-



Marty Alberni



George Wilson

ated to pull the tree over.

The 1st Show was held at the Park in 1963 and the President was the Late William Johnson of Soldiers Road Beaconsfield. The Late Fred Rae was the last President on the Clyde Road

Show grounds. Jack Rae of Narre Warren North was Senior Vice President and the Late Mr Harold Keys Junior was Vice President. Much improvisation had to be made; toilets consisted of crude facilities, mostly hessian compounds somewhere in the bush.

Management of the park is entrusted to a Committee of Management appointed each 3 years: 5 representatives from the Show Society, 4 reps from the Public and 1 City of Berwick Councillor. This was laid down by the Government when the land was granted as a Show and Recreation Reserve. Mr Ern Barker BEM was elected Chairman on the 20-7-1969 and has held that position ever since. The current Committee of Management consists of Mr Ern Barker BEM, Cr McCausland, Mr Charles Gamble, Mr Mals Fakhry, Mr Gordon Fyfe, Mr Maurice Bashford, Mr Ross Bradbury, Mr Max Floyd, Mr

Marty Alberni, and Mr Jack Rae.

During the 1960s the northern end of the park was the Berwick tip taking all the town's refuse. The policy of the Management has been to make the area available to as many organisations and individuals as possible. The Berwick Young Farmers constructed their home on it. It has football clubs, cricket clubs, and it is currently the home of the Berwick Baseball Club. Berwick 2nd Scouts, Venturers, Cubs and Apex Club all share facilities. The Berwick Pony Club and Officer Pony Club also share the facilities, not to forget the Agricultural Society which stages its Show; the oldest Society in the state commencing 1848 and still one of the best. The latest innovation is the Market which provides a facility for the public to share and finance derived therefrom helps to maintain the Park.

DID YOU KNOW?

At the spring Orchid show in Bairnsdale this year G & L Hicks Orchids won 10 first prizes and 8 second prizes.

They also won the Horticultural society's Silver Medal, champion seedling flowering first time and aggregate prize.



BEEJAY'S CLOBBER

Childrens P.J's, Undies, T. Shirts & Shorts.
Track Suits, Bubble Suits, Overalls, Jumpers
& Cardigans, Baby Nighties.

ALL LOCALLY MADE
ORDERS TAKEN 707 1342
Stall 20



BRUCE'S FRESH BREAD

- * BREAD ROLLS
- * SLICED OR U/S BREAD
- * DELI PRODUCTS
- * PARTYS CATERED FOR (BREAD ROLLS)

* ALL AT DISCOUNT PRICES

FRESH EVERY SUNDAY

Stall 61 -62

DISCOUNT CORNER

- * For all Confectionary
- * Bulk Lines a Speciality
- * Variety of Dry & Assorted Biscuits
- * Fresh Salted & Unsalted Nuts
- * Rice Crackers

G. & L. HICKS ORCHIDS



NATIVES
CYMBIDIUMS
CATTLEYAS
PHALAENOPSIS
From flask to flowering

Longwarry Rd. Longwarry

Phone (056) 299 693

INDEPTH ESSENTIALS

For Health and Beauty
For all your aromatherapy needs.

Essential oils, Aroma lamps, Books, Relaxtion tapes,
Massage & Aromatherapy .
Workshops available.

CHRISTINE WATSON

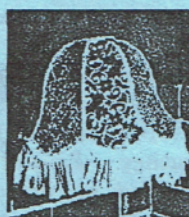
CT. CA. MIFA

Ph. (059) 443 553
(03) 796 2682



86 High St. Berwick

SOPHIE 704 6270



LAMP SHADES
MADE TO ORDER
OR DRESS UP
YOUR OLD ONES

ROBYNE 799 0179

HONEY

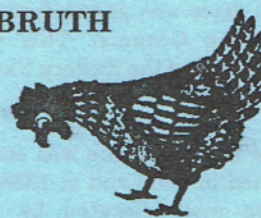
Honey direct from the hive
Eggs direct from the hens
Bees Wax Candles
Honey Toffel

See Peter at the Market.

BIRDS, PETS AND SUPPLIES

WILL GABRUTH

- * CHOOKS
- * RABBITS
- * GUINEA PIGS



ALL TYPES OF BIRDS EXCEPT LICENCED BIRDS,
CAGES AND ALL ACCESSORIES



BERWICK VILLAGE FAMILY FUN FESTIVAL

Saturday 6th & Sunday 7th November.

