

Beaconsfield Banner

Vol. 2. No. 1

Published by the Beaconsfield Progress Association

February 1990

PRES. TED HORTON Ph. 707 1313 SEC. NOEL TONKS Ph. 707 2929 NEWSLETTER CO-ORDINATOR MYRTLE WILSON Ph. 707 2304

VFT - Can Beacy cope?

A public meeting is to be held in Beaconsfield to discuss that latest hot potato amongst environmentalists - the Very Fast Train Project.

High emotions are already being stirred by the prospect of the VFT becoming a reality with frequent trains rocketing past Beaconsfield on the way to Sydney.

Some are describing it as a piece of high technology that we don't need and can't afford, while others believe it will bring about a new era of train travel to match

the speed and comfort of flying.

To enable Beaconsfield residents to find out first hand whether the VFT is on the right track or off the rails, the Progress Association has arranged a public meeting to hear expert speakers present all the facts on the issue.

Questions

This is your chance to be expertly informed and to ask questions about how the VFT will effect you.

The meeting will be held in the Beaconsfield Primary School

Hall, promptly at 7.30pm on Wednesday, February 28th.

Speakers will be Mr Peter Madden, Public Relations VFT Consortium, and Mr Paul James, a researcher from Melbourne University.

Progress Association President, Ted Horton, says the Association has gone to a lot of effort to have expert speakers come along to the meeting so Beaconsfield can be well informed on the issue.

"The route that the new track will take is important to Bea-

consfield," said Ted.

"Noise levels, conservation and land acquisition are but a few of the important matters relevant to the project.

"Currently there is a ground swell of differing opinions about it all.

"The meeting on the 28th will give everyone a chance to hear first hand the facts from official spokesmen."

If you care about the environment you live in, whether you think the VFT is a good idea or foolish, make it a date to be there.

INSIDE

School Centenary celebrations

A move for the community fair

Girls - Here's your chance to be a princess

President's Preamble

Community Calendar

February in your Garden

And much, much more...

We invite your news and views on any subject pertaining to Beaconsfield and its residents.

Drop your copy in at the School or the Post Office in time for the next edition in mid April, or call one of the Progress Association people whose phone numbers appear above.

Beacy's busy brigade

Beaconsfield Fire Brigade had 31 turnouts between 1-7-89 and 25-1-90. Some were false alarms (but all with good intent), some to assist our neighbouring Brigades, and some of our own.

Most alarming is the deliberate burning of "Yogi Bear" at the football ground, the Brotherhood of St. Laurence Bin, and a shed near the creek, not far from the railway station.

Please continue to keep the surrounds of your house and out buildings clear of leaves and

debris. It is much easier and safer for fire fighters to try to protect them if you have done your homework.

Even the smallest of sprinkler systems connected to a fuel powered pump on your tank, dam or pool can help yourself and your assets.

Week day fire fighters are always hardest to supply as most fire fighters work out of the district, so we are always keen to recruit new members - male and female. Enquiries can be

made to Bob Burgess on 707 1389, or at the fire station any Sunday morning.

Please Note - in the event of fire the correct number to ring is 707 2828.

This connects you immediately with a local fire officer. It is only to be used in emergencies.

Some people have tried to reach the local Brigade by ringing a Melbourne fire number, which leads to a delay while they are being referred back to the 707 2828.

Next Meeting

The next public meeting of the Beaconsfield Progress Association will be Wednesday 28th February at 7.30pm in the Beaconsfield Primary School Hall.

SUBJECT: The Very Fast Train & Beaconsfield



SERVICE &
REPAIRS TO ALL
CARS AND
COMMERCIAL
VEHICLES

BEACONSFIELD AUTOMOTIVE SERVICES

Michael Perks

Qualified Motor Mechanic

PHONE: 707 4468

**Factory 1/94 Princes Highway,
BEACONSFIELD, 3807**

SUPA VALU

BEACONSFIELD



All your grocery
needs
FREE delivery
Ph. 707 1092
'Specials'
advertised in
Monday's Sun
OPEN Sundays
till 1pm

*See Alan, Emanuel or Lyn
for friendly service*

President's Preamble

From the President of the Beaconsfield Progress Association, Ted Horton

At the time of writing this, Berwick City Council is deliberating over an application for planning permit by Hooker Land Development to develop a residential subdivision of 527 lots at 130 Soldiers Road, Berwick.

On the southern borders of Beaconsfield adjoining the Princes Freeway, this development will have a profound affect on the future of Beaconsfield. Also adjoining this subdivision is "Cell F" bordered by O'Shea Road, Clyde Road, Soldiers Road and the Princes Freeway which has an ultimate capacity potential of 1855 allotments and 6492 population. Where the extra two will be coming from, I do not know!

But, joking aside, we have to ask what affect is is going to have on Beaconsfield and what can we do about it?

Firstly, in the not too distant future we may experience heavy construction and supply trucks thundering into Beaconsfield, past St. Francis Xavier College, over the railway tracks, along the unmade Kenilworth Avenue, onto Soldiers Road, past the residential Adamson Road, and over the Freeway to drop their loads. Demands on schools, kindergartens may increase.

There will be 5000 vehicle movements a day from the Hooker subdivision alone when it is completed. There will be need for a much bigger station car park. The whole infrastructure of Beaconsfield will be stretched to the limit.

What can we do about it? This is probably an opportune time to press the Councils into providing better access roads, developing bicycle ways and footpaths, preserving creek reserves, providing more recreation reserves, improving shops, etc.

When Councils announce Planning Permit Applications, not only should the Progress Association follow up and demand that certain things be improved and conditional to permits being granted, but it is the right of every ratepayer to go to their Councils and check out the details and lobby their Councillors.

Shire of Pakenham Councillors have in the past been most receptive to suggestions put up by the Progress Association and got things done.

Despite the fact that Beaconsfield area will double in population in a short period, it should not be all doom and gloom.

Now is the time to fight for and win many improvements for our township and make it an even better place for us and our families to live in in the future.

P.S The Progress Association has written to Berwick City Council and asked that they seek a special truck exit ramp off the westbound lane of the Freeway straight into the Hooker subdivision. This should alleviate much of the heavy traffic problem during the construction period.

Ted Horton.

New shops open

Our long-awaited chemist's shop opened in December near the Supa Valu store. Keogh's Pharmacy is a family business and will save us many a trip to other towns.

Nearby is Rob's Bakery with its delicious smell of freshly baked pies, breads and cakes.

Just Patchwork is another family business. Mrs Farr has

materials and books in her shop facing Princes Highway between Souter and Horner Streets.

Latest 'hot' news is that an Indian restaurant has arrived.

Welcome to Beaconsfield!

The enlargements are nearing completion at Supa Valu store and will enable Alan, Emanuel and Lyn to stock some new lines.

Fair Moves to Primary School

The Beaconsfield Progress Association has altered its 1990 plans to hold a community fair at the Squash and Sports Centre similar to last year's fair.

Instead they will support another major community event, the Beaconsfield Primary School Centenary Fete on Saturday 31st March.

Coinciding with Yakkerboo weekend, the Progress Association intends to invite the 1990 Yakkerboo Princess of Beaconsfield to attend, and also the members will assist at various stalls.

Celebrations

Whether you went to Beaconsfield Primary School or not, come and say Hello on 31st March at one of the biggest community events of this year.

Plans are well advanced now for the school's celebrations which will begin on Friday eve-

ning 30th March at 7pm with "Open School" followed by the launch of the Centenary Book. Copies will cost \$10 each.

The evening will conclude with tea and biscuits, and time to have a chat to former school-mates.

Fair

The Centenary Fair commences at 10am on Saturday 31st March.

Amongst items on sale will be windcheaters and jackets, but these must be ordered in advance. They will be available in two colours gold with the centenary emblem in brown or brown with centenary emblem in gold.

A deposit of \$10 is required for each jacket or windcheater, and you are advised to contact the school as soon as possible to place your order.

Size and colour must be stated. Full price of jackets is \$30 and

windcheaters are \$20 each.

Other souvenirs will be available without need to order in advance and include teaspoons, cloth badges, glasses, mugs, pendant, badges.

Bus trips will be available during Saturday to look at the sites of wellknown places from yesterday and the general growth changes.

Dance

A 50/50 dance will be held on the Saturday evening in the Narre Warren Community Centre. Tickets cost \$10 (single) and \$25 for a family ticket.

You are requested to forward the money for dance tickets to "Centenary", Beaconsfield Primary School, Princes Highway, Beaconsfield, before the end of February. A really good night is assured for all.

The activities on Sunday 1st April will commence with a

church service in the Beaconsfield Baptist Church at 10.30am.

This will be followed by a luncheon at the school.

Again it would be a help to the organisers if meals could be ordered in advance, but payment is not required until the Sunday.

Spit Roast

The choice is Beef spit roast and salad, approximately \$7; Hot beef roll \$2.50, and a choice of Dessert \$1.50. Tea and coffee will be provided with lunch.

The Roll Call at 1.45pm will be an important part of the weekend of celebrations.

Lists have been compiled of all pupils who have attended the school since the early 1900s.

So if you are a former pupil, come along and see your mates and stand up and be counted with your class.

Any further information will readily be given on 707 1510.

Girls - Here's your chance to be a Princess

Every wanted to be a Princess, even if only for two weeks? Your community needs you!

The Progress Association wishes to appoint Beaconsfield's own Yakkerboo Princess for 1990. Aged between 16 and 20 years, applicants need to reside in Beaconsfield and have a good general knowledge about their town.

If chosen, our 1990 Princess will need to attend certain events including the Yakkerboo Ball on Friday 23rd March and the Yakkerboo Parade on Sunday 1st April.

There must be many young young ladies who dream of becoming a Princess. Make the dream come true and phone Mrs Melva Behr on 707 2235.

Brownies Bloom but Guides wilt

Girls aged from eight to 11 years are enthusiastic members of the Beaconsfield Brownies and have many interesting activities. Anyone requiring information about joining should contact Mrs Diane Heafield (A.H. Ph. 707 2112).

Unfortunately the Beaconsfield Girl Guides are in recess due to the resignation of the leaders. At the start of this year there will be no Guides.

Leaders are needed urgently to right this situation. Anyone who is interested in helping solve this problem is asked to ring Mrs Mary Perks on 707 4468 (or A.H. 707 4553), or the Division Commissioner Mrs Kay Hogben (A.H. Ph. 707 5747).

Please come to our rescue if your possibly can. The rewards you will receive will be immeasurable, and the girls will benefit from your leadership.

Community Calendar

Please phone details of your organisation's special events to Mrs Mary Perks on 707 4553 for inclusion in our April calendar or write a note and put it in the box on the post office counter.

February 1990.

24th-25th - Berwick Show, Acoonah Park.

March 1990

10th - Pakenham Show Day.
18th - End of Daylight Savings.

19th - Monday - Beaconsfield Scouts Annual General Meeting, Scout Hall.

23rd - Friday - Yakkerboo Ball, Queen Crowning, 7.30pm Pakenham Public Hall.

24th - St. Francis Xavier College Autumn Fair.

30th - Friday evening - Open

School and book launch, Beaconsfield Primary School's Centenary, 7pm.

31st - Beaconsfield Primary School Centenary Fair, 10am-4pm, Evening - Centenary Dance at Narre Warren Community Hall.

April 1990.

1st - Sunday - Baptist Church, Beaconsfield School's Centenary Service 10.30am. Luncheon at Beaconsfield Primary School, 12 noon.

1st - Yakkerboo Parade, Pakenham, 11 am.

Yakkerboo Fair, 12 noon, Pakenham Race Course.

12th - Beaconsfield Primary School & Kindergarten end term 1.

13th - 16th Easter.

30th - Monday - Beaconsfield Primary School start Term II.

Beaconsfield Community Group

The Beaconsfield Community Group wish to thank the Shire of Pakenham for its allocation of funds to provide extra storage cupboards for the playgroup.

The group would also like to invite any newcomers to come along and join in on the fun. Playgroup session times for Term One commence on Monday 5th February - 10.00a.m. to 11.30a.m. and will run every Monday and Thursday morning excluding public holidays and school holidays.

The first session back will prove to be a fun day as we will be celebrating a birthday as well as creating many wonderful things.

All parents, guardians and caregivers are welcome to bring

their children to either or both sessions each week so they may enjoy the company of other children and mothers in the Beaconsfield area.

Room to romp

We operate our playgroup from the old Baptist Church Hall (Railway Avenue, Beaconsfield) which allows the children plenty of room inside to romp around.

At present we are in the process of planning further outdoor play areas which will prove to be an adventure for even the most adventurous child.

For any further information please feel free to call us - Kathy 707 1284 or Hellen 707 2633, we would be only too happy to help you.

Letter to the Editor

The Editor,

I see an urgent need to slow down the traffic through our town before someone is bowled over by a car. Would a change of name to Prince's Way (as Drouin made

when the highway by-passed their main street) give less impression of a speedway than Prince's Highway?

Yours etc,
"Worried Pedestrian".

**For all outdoor
needs from tractors,
mowers, chainsaws,
brushcutters,
pumps, etc**

Spares, Repairs & Service
Contact Peter Willis

**Beaconsfield Mower
& Tractor Centre**

707 5368

Red Cross report

Here we are into 1990 and I thought my contribution to your bulletin this year might highlight one of our community services each publication.

Transport - We are seeking additional volunteers for our roster.

We need residents willing to use their private cars to transport people to a variety of health related appointments. This may require the patient to travel locally, to Dandenong, to metropolitan areas, or to central Melbourne.

Drivers should be no more than 70 years of age. If required, reimbursement for petrol is available. Drivers are covered by insurance.

The majority of our drivers are women. Why? I see the possibility of couples being able to work together in this service. You may not be called upon as a driver more often than every two or three months.

The Red Cross Calling (door knock) is dated for 1st to 10th March. Please make certain that your Caller is wearing the identification badge and that you are given a receipt for your donation.

All our Callers give their services free of charge.

Red Cross Major Raffle tickets will be on sale very soon. There are three Toyota cars to be won as the first, second and third prizes. Consolation prizes (shopping sprees) are valued from \$2500 down to \$100.

Used Stamps are a good money raiser for Red Cross. How about producing a box with the Red Cross emblem and getting permission to collect in schools, etc.

Magazines and Paper Backs. Magazines no more than 6 months old are required for distribution throughout hospitals - State wide - by our Red Cross volunteers.

Those most required are Post, People, English Women's Weekly, Australian Women's Weekly, and sporting magazines (especially ones for men).

I would like to hear from anyone willing to help in any way. More details can then be provided.

Marie Womersley,
Publicity Officer,
Berwick/Upper
Beaconsfield Unit.
Phone (03) 707 1103.

V.C.E at St. Francis Xavier College

Students from St. Francis Xavier College, Beaconsfield achieved excellent results in the 1989 V.C.E. examinations.

The College achieved an 87% pass rate with a total of 25 A's and 40 B's.

The best individual result was 5 A's and an "Anderson Score" - used by tertiary institutes for admission to courses - of 390 out of 410.

While stressing that V.C.E. results were not the only criteria

by which a school or individual students should be judged Mr Aidan Burns, Principal, complimented teaching staff and Year 12 students on their efforts.

Mr Burns stated that St Francis Xavier, as a nonselective College attempting to offer comprehensive curriculum, would continue to stress the importance of the individual and the need to strive for excellence in all areas and at all levels.

Beaconsfield Girl Marries in Perth

Joanna Foks, daughter of well-known dance teacher, Mrs Gillian Foks, recently married Carmelo Sollazza in Perth. All Joanna's family went over to

attend the wedding.

For the last four years Joanna has been studying dance in Perth and now has gained her Diploma. Congratulations!

Coping With the 1990s

"If you can't beat them," is very applicable to Beaconsfield at this time.

We can't beat the influx or new residents who will double the population of Beaconsfield within the next few years.

So how does one cope with fears of being over-run by newcomers?

Firstly, they won't all arrive on the same day. The increasing population will be steady, and noticeable, but it won't be an army swarming down our streets.

Remember how we wondered a few years ago how all those people coming into the Central Park Housing Estate would fit in?

We never think of that now. They fitted in very well indeed, and there is no "them" and "us".

We are all residents of the same town.

by Myrtle Wilson

Numerous residents living here less than five years hold offices now in organisations and their contribution of a wider range of skills and experience has enriched all our lives.

The same pattern can continue when our population grows again.

Broadening our minds to include more people around us is important for our physical and mental health.

But how? Sitting at home and being frightened of the masses arriving is not the solution. In fact it is a way to make oneself miserable and feel more cut off.

It is much better to join an organisation and get out among people of similar age group, or similar interests, and hear the leaders taking a positive atti-

tude to developing the organisation to meet future expansion.

Teach yourself the names of the new streets in the district by using them, or from reading a Melbourne street directory, so you feel familiar with the names when others speak of them.

Sample the wider range of goods and services available in the new shops, and acquaint yourself with the shopkeepers until their names roll off your tongue as easily as Bryan or Mary or Alan.

How you adjust to the future enlarged Beaconsfield will depend largely on how long you leave it to begin trying to make your adjustment.

Join in and become a live part of the town and you may be surprised how much better you feel about the 1990s in Beaconsfield.

Like to advertise in the Beacy's own paper - The Banner

Fill in the form and leave it at the Milk Bar or Post Office.

Name of Advertiser

Phone Number

Address to which account is to be sent

Message

Rates for advertising:

1/4 page in a single issue \$25.

1/4 page \$20 per issue for six bi-monthly issues.

1/2 page in a single issue \$48.

1/2 page \$38 per issue for six bi-monthly issues.

Full page in a single issue \$80.

Full page \$64 per issue for six bi-monthly issues.

Beaconsfield Meat Supply

Sell Only Top Quality Meat

"And that's no bull"

Spit hire 707 1163

Roaming Roast Spit Roast Catering -
For your next party or function,
call the Roaming Roast and let us be your host

Ph. 707 1163

Did you know? Our Natural World

Beaconsfield cyclists can have their bikes marked and so aid recovery in the event of theft. This is carried out on first Saturday of every month by Lions and Police at rear of Doveton Police Station.

Beaconsfield Tennis Club has a new coach. Robert Keighery started playing tennis at age 10 and worked his way up to the International tennis circuit in 1977-79. He has coached in West Germany and at Lilydale. He can be contacted by phoning 233 9397.

You are not allowed to pump water from Cardinia Creek at this time of year for domestic use, gardens, swimming pools, etc. Livestock need to drink it down near Cardinia on farms which have no mains water supply. Don't break the law because

checks are made by aircraft, and nothing shows up more clearly than a lush, green patch surrounded by fawn grass. For permits or enquiries contact the Rural Water Commission on 508 2222.

"Beaconsfield Banner" is one year old. Main topics mentioned in the one page issue of February 1989 were the Berwick/Pakenham "growth corridor" (which has seen two name changes in a year), the Beaconsfield community fair, and discussions about building a new public hall.

Covering books to keep them clean and tidy can be a problem, especially school books. Did you know that you can now have them laminated at Beaconsfield Primary School for a very reasonable cost. To avail yourselves of this service, contact Mrs Washbourne at the school on 796 1053.

In today's climate of high-tech medicine, complex drugs, and amazing operations replacing diseased organs, we tend to forget that mankind has always had the natural world at his disposal for the cure of disease and the maintenance of health.

Without doubt the oldest group of healing is the herbal area. Long before man walked the earth, the plants arrived and were well established.

The common garlic (or "poor man's treacle" as it was known) belongs to the onion family, and has a long history as a food and medicine. It goes back long before recorded history.

The ancient Egyptians gave their builders of pyramids a daily garlic ration so maintain their health in their arduous workload. From Ancient Greece (circa 1000 B.C.) the great poet Homer credits Ulysses miraculous escapes to garlic.

In more modern times, the use of garlic was quite sensational during World War I. In 1916 the British Government asked for tons of the bulb to be grown, offering one shilling per pound, for as much as could be produced.

The raw juice was extracted, diluted with water, soaked into swabs of a special sterilized moss, and applied directly to the wounds of soldiers crammed into London hospitals. The death rate from the effects of trench warfare had been extremely high, but after garlic was used, not one single case of sepsis developed, deaths from infection virtually ceased, and tens of thousands were saved.

Next time you handle a garlic, consider the miraculous properties of that humble bulb, which contains healing abilities, less understood by us today than by our ancestors.

Peter Hansen

Well established local dance and drama school

Some 800 people enjoyed four end-of-year shows by the Officer School of Dance and Drama which were staged at Pakenham Public Hall and the Berwick High School.

The Principal, Mrs Gillian Foks, started her dance school at Officer 10 years ago. Since moving it to Beaconsfield, it has grown to 135 pupils ranging in age from four to 18 years, and Mrs Foks is assisted by four qualified teachers.

The school has never looked back since Mrs Foks bought the old "Buffalo Lodge" hall two years ago and created her studio at 11 Railway Avenue, Beaconsfield. Previously this building was a primary school at Tynong North.

Classes for difference levels of attainment will be held each afternoon from 4.30pm onwards with additional classes for drama being taken in the Baptist Church Hall and tap dancing in the Guide Hall. Some classes are also held on Saturday mornings, and still there is a waiting list.

Boys as well as girls attend. Many of the boys begin through having an interest in drama and later feel they would like to learn to dance as well.

Mrs Foks said how fortunate she is to have such an enthusiastic group of parents around her pupils. They help in many ways.

Dancers from the school can be seen at numerous district functions, and we shall look forward to seeing them at the Beaconsfield Primary School Centenary Fair on Saturday 31st March.

Enquiries can be made to Mrs Foks on 707 1615.

Quotation

"To err is human,
But to really foul things up
You need a computer."
Anon.

(Copied from several writers' clubs' newsletters.)

Natural drugless healing ensures
reliable results without side effects
Qualified advice and treatment for all
health problems

Peter N. Hansen

Naturopath
N.D. - C.I. - A.T.M.S.

Beaconsfield Medical Centre

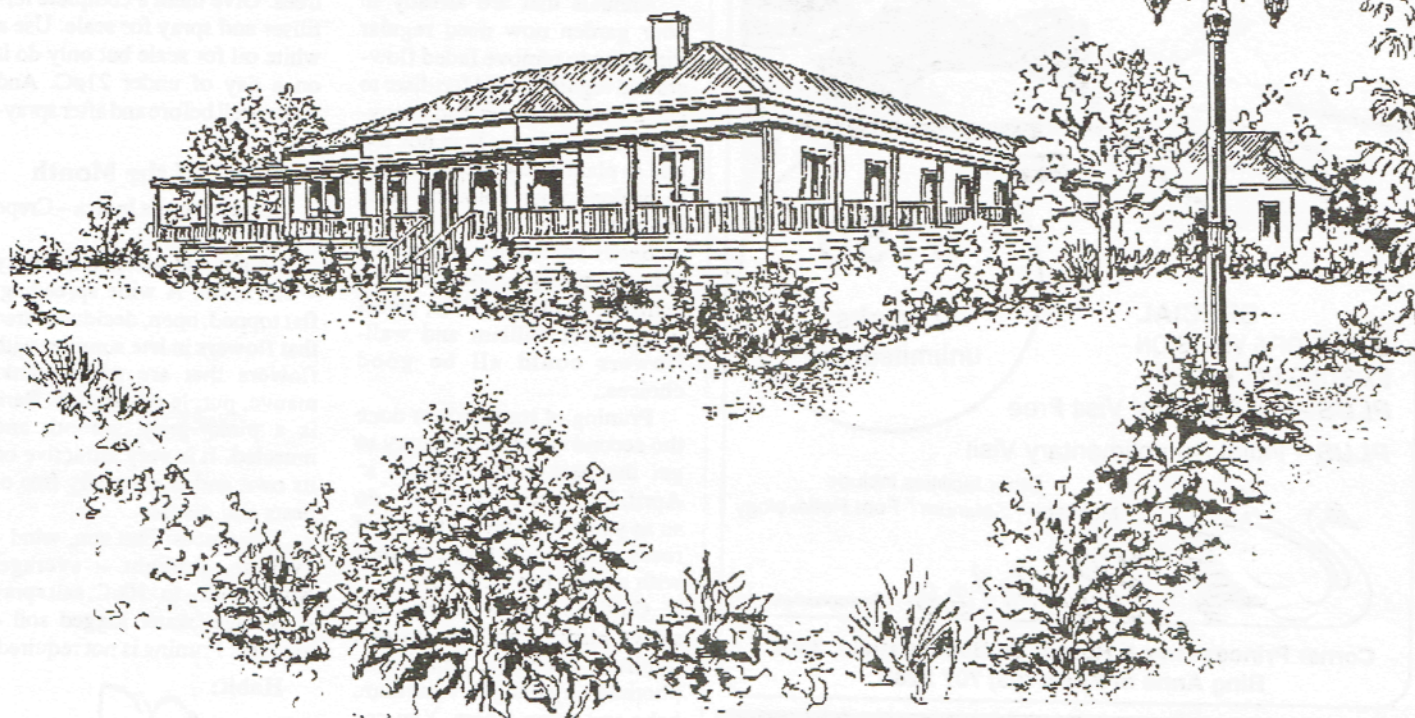
Suite 3, 39 Wallace St., Beaconsfield, 3807

Tele.: (03) 707 3892,

A.H. (03) 707 1214

Accredited iridologist, herbalist, homeopath,
nutritionist, tactile therapist. Also for
manipulation and all emotional problems.

Health fund rebates available

JUDD**REAL ESTATE SCENE****Local landmark to be sold**

Known in its early days as the 'Big House' at Upper Beaconsfield "Pen Bryn" in Salisbury Road is to be Auctioned by Judd Real Estate on the 24th February at 2.00pm.

The property established in the late 1800's is of great historical significance and is mentioned in many historic publications.

It sits atop seven acres of wooded pastures and magnificent old gardens and is the highest point in Upper Beaconsfield.

From the main living rooms and across its front verandah a view of fabulous proportions opens out across the suburbs and across the width of Port Phillip Bay.

On a clear day ships can be seen almost as clearly as if you

were standing at the end of Port Melbourne pier.

Of solid brick construction, the gracious old home encompasses a total of some sixty squares. Bedrooms number five and a superb den or study caters to the needs of the head of the house.

Three bedrooms service the home, the master having its own ensuite and dressing room. Internally, the home has been extensively renovated in a manner that is sympathetic to its origins yet provides the family of today with all wanted luxury appointments.

Decor is a modern soft grey and much use of natural light gives the home a feeling of spaciousness and comfortable warmth.

The present Vendor bought "Pen Bryn" in June 1988 and has completed internal renovations and returned much of the external renovations to their original state. (The property was over the years subjected to the usual add on's, many of which were not in keeping with its origins).

Today Pen Bryn stands majestically amidst its leafy surrounds and typifies that rare form of real estate so eagerly sought by those who appreciate the immeasurable value of these grand old homes.

For further information, call Judd Real Estate of 3 Webb Street, Narre Warren, 704 8555 or After Hours Peter Watson 704 6410.

JUDD**REAL ESTATE SCENE**

UP-TRIM  **DOWN**

TONE 



\$150

4 weeks unlimited use

SPECIAL BONUS OF 6 VISITS ON EXISTING PACKAGES
PLUS - 1st Package Visit Free
PLUS - Initial Complimentary Visit

Other facilities include
 * Massage * Solarium * Foot Reflexology

 **body Profiles** Beaconsfield

Corner Princes Hwy & Horner St, Beaconsfield, 3807
 Ring Anne or Kevin (03) 707 2288

BEACONSFIELD LODGE MOTEL

PHONE 707 1454

1 Souter Street, Beaconsfield

Modern units in a quiet garden setting. Facilities include colour TV, phone in all rooms, fridge, ensuite bathrooms, electric blankets, heaters, fans, clock radio, tea and coffee making facilities. Restaurant and playground opposite motel. Shops and hotel within 500 metres

◆◆◆ **RACV RATING**

FEBRUARY IN YOUR GARDEN

By Lisa Robinson

February is the month of showy annuals, dahlias, heat loving hibiscus and crepe myrtles.

Annuals that are already in your garden now need regular trimming to remove faded flowers and regular liquid fertiliser to get the most colour and enjoyment out of them. It is not too late to plant a few more annuals to prolong your colourful beds and pots.

Seeds for winter and spring annuals can now be sown. Stocks, nemasias, pansies, violas, sweet peas, sweet william and wall-flowers could all be good choices.

Pruning of roses is best done the second week in February to get the best quality bloom in April. Don't heavily prune - do so as you would pick a bunch of roses. Also don't forget to feed with a complete fertiliser.

Cuttings can be taken from native plants, conifers, azaleas, daphne, fuchsias, abutilons, photinias, hydrangea, viburnum, hebe and some others. You can also prune your pelargoniums. All cuttings should be put in either a propagating mix or 80 per cent of course sand to 20 per cent peat moss. One of the best propagating mixes is the Debco Propagating Mix.

Remove all fallen fruit and

rubbish from around your fruit trees. Give them a complete fertiliser and spray for scale. Use a white oil for scale but only do it on a day of under 21°C. And water well before and after spraying.

Plant of the Month

Lagerstroemia Indica - Crepe Myrtle

Height and width at maturity - 5m x 7m. A wide spreading, flat topped, open, deciduous tree that flowers in late summer with flowers that are white, pink, mauve, purple or carmine. Bark is a pinky-grey, smooth and muscled. It is very attractive on its own and is generally free of pests and disease.

Tolerances: Full sun, wind - average, drought - average, winter cold - to -10°C, salt spray - average, water logged soil - average. Pruning is not required.

Habit:



Does the Date Suit You?

We would love to see more people attending the public meetings of the Progress Association. Several have told us the date clashes with other functions.

If the fourth Wednesday evening of every second month (February, April, June, August, October) does not suit you, could you suggest an evening which might be better for everyone?

Write a note with your alternative choice of meeting night please and drop it in the box on the post office counter.

Market Place

This column invites your two line ads - price only \$2.

For Sale

Honda Express Motor Scooter 50 cc. Good cond. \$600 ONO. Ph. 707 4468.

Wanted

Capable handyman/carpenter required to repair and/or replace timber in verandah floor. Ring 707 3573.

Taking photos for posterity

By Myrtle Wilson

Recently I was given some good advice. "When you take photographs, you are not meant to take them for yourself. You should take them for your grandchildren's children."

Good advice? I think so.

The most interesting photos to look back on from earlier times are the ones which are most different from today's way of life, and the ones which have identification on them. That is very important.

Write a name on the back of each print, or fold a written list with color slides or negatives, so future generations can understand them.

I found a photo my father had taken in the late 1920s of a group of men fishing along Cardinia Creek between the original Soldiers Rd bridge (slightly upstream from the present one) and the railway bridge. It was a wonderful record of how they spent their Sunday afternoons. Perhaps some had come out from Melbourne by train for a day at Beaconsfield?

They wore long sleeved white shirts, dark vests to match their trousers, and good quality felt hats. Presumably they had taken off their ties and coats to relax comfortably, but they looked totally incongruous in the waist-high growth of reeds and dry grass with their simple stick and string fishing lines.



A 1920s photograph showing men fishing along the Cardinia Creek near the present railway bridge in Beaconsfield

Research into early histories of the district told of plate-sized fish being caught in the deepest holes in the creek. Eels and freshwater mussels were there too.

When we think of the enormous changes expected in our town and district within the next decade, there is plenty to photograph before it alters.

So label your photos in such a way that future generations can work out their exact location. Not "Next to Mr Brown's place", but rather "100 metres north-west of the A and B St intersection".

Junior Reporter Wanted

The Banner wishes to know if any local young people, either secondary school age or left school, are considering entering journalism or creative writing. Would you like to help gather news for the Banner?

This would be a good opportunity to have some practice preparing news items and articles.

Ring the newsletter co-ordinator on 707 2304 and we will be happy to discuss it with you.

Bonfire in Beaconsfield

The Beaconsfield Progress Association plans to stage a community bonfire night on Monday November 5th this year, which is Melbourne Cup Eve.

Along with other community groups, it is expected to be a great night out for families and friends. Watch this space for further details.

BEACONSFIELD GARDEN SUPPLIES

Come &
See Our Craft
Shop - GIFTS
with a
Difference

For friendly,
efficient service

- Sand, Screenings and Cement
- Pavers and Terra Cotta Agi Pipes
- Redgum Chips and Pine Bark
- Sleepers (old and new)
- Scoria and Rocks
- Handyman Hardware

WE CATER FOR ALL BUILDERS,
LANDSCAPERS AND TRADESMEN

- Deliveries 7 days a week -

"Call in and say Hello"

94-100 Princes Highway, Beaconsfield

Telephone (03) 707 5144



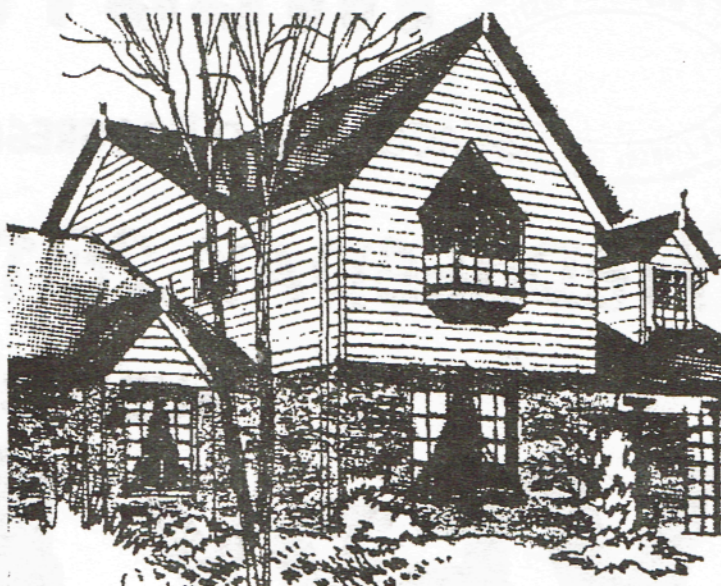
Phone (03) 7072302

BEACONSFIELD TIMBER

AND

HARDWARE Pty Ltd

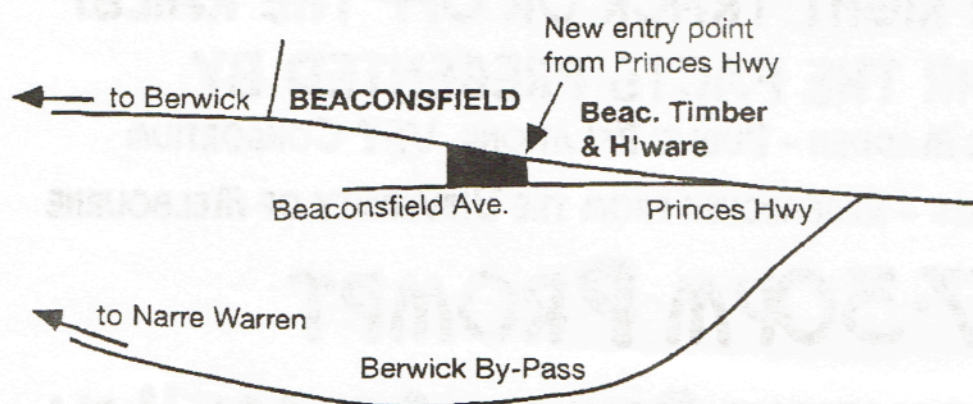
For all your
timber &
hardware
needs at
your home



Lot 2 BEACONSFIELD AVE, BEACONSFIELD

707 5055 (5 LINES)

OBHW, PINE, OREGON, K.D MOULDINGS
A/C SHEET, REDGUM, FENCING MATERIAL
FIBREGLASS SHEETING, TREATED PINE
FLOORING, HARDI PLANK



WE CAN ALSO
PROVIDE A
LARGE RANGE
OF HARDWARE
FOR THE
HANDYMAN
AND
PROFESSIONAL

Note our new entrance off the Princes Hwy

SPECIAL PUBLIC MEETING

BEACONSFIELD PROGRESS ASSOCIATION

WEDNESDAY 28TH FEBRUARY

SUBJECT:

VERY FAST TRAIN

...ON THE RIGHT TRACK OR OFF THE RAILS?

HEAR THE FACTS PRESENTED BY

MR PETER MADDEN - PUBLIC RELATIONS VFT CONSORTIUM

MR PAUL JAMES - RESEARCHER FROM THE UNIVERSITY OF MELBOURNE

7.30PM PROMPT

AT BEACONSFIELD PRIMARY SCHOOL HALL