

# Beaconsfield Banner

Vol. 14 No. 5. Bimonthly Publication of the Beaconsfield Progress Association Inc. Oct. / Nov. 2002

ARTICLES FOR THE BANNER CAN BE SENT TO - EMAIL ADDRESS, MARGARET BOON 9707 5053 OR BOX IN POST OFFICE  
ADVERTISING CO-ORDINATOR WILLEM BOON 9707 5053

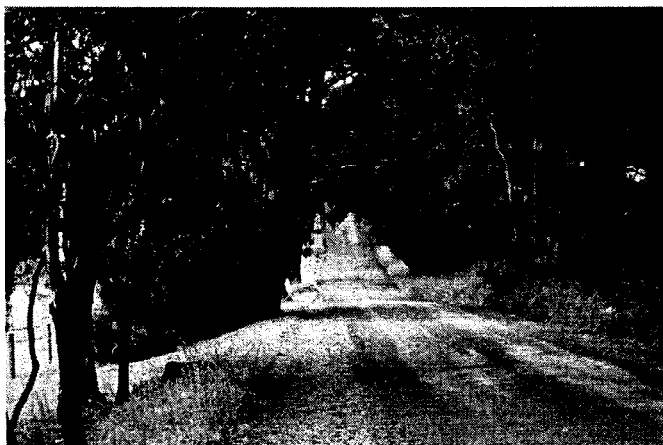
**banner@beaconsfield.org.au**

BANNER POSTAL ADDRESS PO. BOX 217 BEACONSFIELD 3807

**www.beaconsfield.org.au**

## THE GREEN LIGHT AT LAST

The long awaited stoplights at the intersection of Emerald Rd and Princes Highway were finally connected on the weekend of the 20<sup>th</sup> September, 2002, making the traffic flow a lot safer.



## THE VIEW ON HOLM PARK ROAD CHANGES.



### BEACONSFIELD PROGRESS ASSOCIATION

### ANNUAL GENERAL MEETING

**Tuesday 22nd October, 2002  
7.30pm**

BEACONSFIELD COMMUNITY CENTRE,  
BEACONSFIELD AVENUE [NEXT TO SCOUT HALL]

Light supper shared after meeting closes at 9pm.

**The Association achieves its  
best results if you the  
community tell us  
of your concerns.**

### PROGRESS ASSOCIATION INVITES GUEST SPEAKER

A speaker will address the residents about the Cyprus Pine trees on Emerald Beaconsfield Road.

**TUESDAY 22nd OCTOBER  
7.30pm  
at Beac Community  
Centre.**

### SPECIAL EDITION

### BEACONSFIELD STATION ESTATE AUCTION ADVERTISEMENT - 1921



**CENTRE PAGE**

For all agricultural , domestic and outdoor power equipment see



**BEACONSFIELD  
MOWER &  
TRACTOR  
CENTRE**

*Contact Peter Willis*

114 - 120 Old Princes Hwy.  
Beaconsfield.

**9707 5368**

Fax 9769 9233

[www.beacmowertractor.com.au](http://www.beacmowertractor.com.au)

"We service what we sell"



**BEACONSFIELD  
AUTO  
ELECTRICS**



3/94 Princes Hwy Beaconsfield

Telephone: 9796 1550

MOBILE 0409 009 919 FAX 9768 9585

- ★ Change Over Starter Motors & Alternators
- ★ Ultrasonic Injection Cleaning
- ★ E.F.I. Tuning & Repairs
- ★ Headlight Alignments
- ★ Onsite Service Calls
- ★ Batteries
- ★ Tune - Ups
- ★ Full Re-wiring

**AIR  
CONDITIONING  
SERVICE &  
INSTALLATION**



## 'NEIGHBOURS' FILM IN BEACONSFIELD

The Directors of 'Neighbours' approached the owners of the Beaconsfield Lodge Motel for the purpose of filming an episode of the popular T.V. programme.

On 3<sup>rd</sup> September cast and crew

successfully taped an episode of 'Neighbours', due to be seen in February 2003.

The storyline is one where Dee and Darcy are on their way to Colac, (everybody knows that Beaconsfield is on the way to Colac!), and the car breaks down on Inglis Road and they have to find a motel.

Only one room? Is Darcy a cad or not? Room 7 will never be same again!



Above: Madeline West (Dee) pictured with Richard Best at the Beaconsfield Lodge Motel.

## CONTENTS

Architect Appointed	19	Handyman	32
Cardinia Shire Report	4	Len Keogh	6
BPS Corner	34	Make & Mingle	10
Beaconsfield History	8	Our Natural World	31
Baptist Church Voice	15	Presidents Report	3
B.I.C.R.A.G.	13	Rainfall	38
CFA	5	Sally's Garden	18
Community Centre	9	Suedor Boarding Kennels	30
Cricket	36	Tennis	37
Crosswired	27	Tax Update	17
Friends of Cardinia Creek	16	Victoria Police Column	7
Guys Hill History	26	Wine & Food	12

*The Beaconsfield Progress Association, together with the financial support of the advertisers, is able to distribute 1800 copies of the Beaconsfield Banner FREE to the residents of Beaconsfield.*

The Beaconsfield Banner is printed by Ferny Creek Printing P/L.



## BEACONSFIELD PROGRESS ASSOCIATION PRESIDENT'S REPORT

by Angela McPhee

Whilst there has been increasing focus on the traffic problems in Soldiers Road Beaconsfield, thanks to the activities of the BRICAG (Beaconsfield Residents in Casey Action Group), there has been no real progress to the other traffic problems in the southern part of the town. We will maintain the pressure on Council until we see some positive results. Until Soldiers road is extended to join to Manuka Road any measure will be a band aid. As a community we need to keep the pressure on our Local State and federal governments to ensure this is treated as a key project.

The traffic lights have finally arrived and construction has commenced on the Aldi

Supermarket. Planning approval is in place for the shopping centre complex on the adjoining land and a new childcare centre on O'Neil Road. Our town is in a rapid growth phase. The Association's role in part is to ensure that development is not detrimental to our town and that the necessary infrastructure is in place to support the population.

There is a study underway to examine the requirements of the Shire in terms of pedestrian and cycle pathways, both over the whole Shire, and within each town. The Beaconsfield Progress Association is looking at our town's requirements. There needs to be easy access to: the new community facility on O'Neil Road, Akoona Park, Cardinia Creek Parklands,

a potential new sporting facility at the corner of Holm Park Road and access for the more remote residents of the town ie Guys Hill and Panorama Estate. If you have any ideas on what is required in you part of town please let us know.

The next meeting is our AGM. Whilst traffic issues will remain a focus over the next year you input would be welcome for any key projects that require attention. Our Mayor Keith Ewenson will be addressing us on the future of the pine trees on Emerald Road. I look forward to seeing you at our AGM. Everyone is welcome.

To jump on a hobby horse of mine for a moment, the use of public roads and footpaths by trail bikes is

illegal, not to mention dangerous. I was horrified when one Friday night while taking my children to the milk bar (they are 2 & 4) a trail bike drove past us on the foot path. The bike continued along the foot path then up Wood Street. The rider was in his mid to late teens and the bike had a number 25 on it. If anyone knows the identity of this person I would like to take the matter further. This is not the first time I have seen trail bikes on foot paths in the town and I know Berwick Views and Bowmans Track are plagued by these pests. The police are on notice and have been requested to take action.

I can be contacted at my office (McPhees Solicitors) now located beside Onya Restaurant or on 9707 0590 or by email on [bpa@beaconsfield.org.au](mailto:bpa@beaconsfield.org.au)

### BANNER DEADLINE

15th November, 2002

#### ARTICLES WELCOME

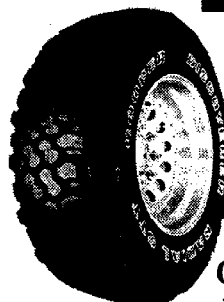
Have your say on local issues, submit anecdotes about Beaconsfield past/present.

All articles in relation to births, deaths, marriages welcomes, farewells are gladly published free of charge.

Please provide name & contact details for verification. Written articles can be left at the Post Office in the Banner Box or they can be sent to the Banner email address.

**banner @  
beaconsfield.org.au**

### Beaconsfield Tyre & Mechanical



**BRIDGESTONE**  
A GRIP ON THE FUTURE

**GOODYEAR**

**Firestone**



**GOOD COUNTRY SERVICE FROM A  
LOCAL WHO KNOWS YOUR NEEDS**

PREVIOUSLY GOODYEAR

26 Princes Hwy, Beaconsfield Phone Mark Bedwell on 9707 1593



## Akoonah Park BERWICK

**Produce, Trash &  
Variety Market**

**EVERY SUNDAY**

Opens 8.30am. to 1.30pm.

*Family Market*  
*Free entry*

Phone Bookings on  
**9796 1455**

## Beaconsfield Pharmacy

**OPEN 7 DAYS A WEEK**

<b>Mon - Fri</b>	<b>9am. - 9pm.</b>
<b>Sat.</b>	<b>9am. - 6pm.</b>
<b>Sun.</b>	<b>9am. - 2pm.</b>
<b>Pub Hol.</b>	<b>9am. - 2pm.</b>

**Public Fax Service 9796 1645**

**HOME DELIVERY**

**9707 5187**

Agent for:  
MEDIBANK PRIVATE  
LOREAL  
LATROBE  
CONSTANCE CARROL  
FRENCH PERFUMES

Invalid Equipment for Hire  
or Sale.  
Ear Piercing  
Photocopy Facilities

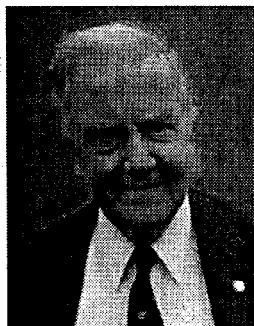
Agent for: QFL

24 exp film \$7.95

Reprints 1/2 Price for 10 or more

1/2 price Enlargements : 20 x 25cm

**Shop 2/16 - 24 Princes Highway  
BEACONSFIELD**



**CARDINIA**

*by Cr. Keith Ewenson*

### MEDIA RELEASE

Regarding the Cyprus pine trees along the Emerald Beaconsfield road.

I heard of the proposed removal and thought it wise to mention it in the Banner last edition rather than see the removal occurring. I consider the trees are past their use by date, but that is my personal opinion.

The overall public open space is about to be handed over from the developer to the Council. It is known that there will be considerable expense to remove the trees, so rather than the Council accepting that responsibility an agreement with the developer should be reached before the hand over as to who will be responsible.

It has now been agreed an arborist should assess the trees before any action takes place. In the light of this advice appropriate action will be taken. I am sure there would be a lot of trees more suited to the wet land environment than pines. The trees may look better from the estate side, I only view them from the Emerald road.

Wendy Abbott who will be receiving the specialist advice and will pass the details to those people who have enquired.

By the time this is published an architect will have been selected to design the new Community Centre and we will be requiring reps. from the Kindergarten, Community Centre and Progress to form the project team with myself and the project manager.

At the last Council planning committee we took a significant step forward in the provision of future additional recreational area by deciding to place an acquisition overlay over a property on the corner of Emerald/Beaconsfield Road and Holm Park road, indicating in the strongest possible terms our desire to provide extra recreational resources for Beaconsfield.

### CARDINIA SHIRE COUNCILLORS:-

Cr. Keith Ewenson:  
Ph 0409 149 535. Email  
kewenson@nex.net.au

Cr. Ted Owens: 0419 524 777

### STOP PRESS

See Page 19 for report on  
Architect Appointed for Beaconsfield Centre.





## BEACONSFIELD FIRE BRIGADE NEWS

### IT SEEMS SUMMER HAS ALREADY HIT!

With devastating fires already hitting Sydney this fire season it is a good warning for all residents to start their summer clean up if they haven't already.

As summer approaches it is a good idea to get rid of any extra litter around your property that isn't needed such as: cleaning the gutters, mowing the lawns, slashing the paddocks, cleaning away unwanted grass and leaf litter.

If you require any information in regards to burning off etc., you can contact your local council or ask at your local CFA station.

### NEW RECRUITS WELCOME

We would like to welcome our new recruits who have shown interest and have commenced their recruit training A BIG WELCOME.



### WELL DONE AJ!

The members of the brigade would like to congratulate one of their own this month. Aaron Johnson who has been a member for almost 3 years now has recently begun his training to become a Career Fire-fighter. He started his 16 weeks training 3 weeks ago at the Fiskville Training College, Ballan, Victoria.

We would like to congratulate him on his efforts.

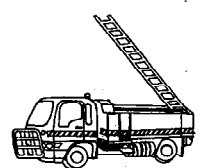
### WE ARE PASSED THE HALF WAY MARK!!!

Our fundraising for the new fire truck is currently at a total of \$65,000. We would like to thank the community and surrounding areas for all their help so far in our campaign to raise money. We haven't been fundraising too hard the last month or so but we are delighted with funds raised so far and we will be out in force again soon! THANKYOU.

### NEW FIRE TRUCK APPEAL

\$65,000

TARGET \$100,000



***Beaconsfield Timber & Hardware P/L***  
***Lot 2 Beaconsfield Ave***  
***Ph: 9707 5055***

- ★ Pergolas
- ★ Decking
- ★ Carports
- ★ Fences
- ★ Project Pricing
- ★ Deliveries Daily
- ★ Timber & Building Supplies



## BEACONSFIELD NEWSAGENCY & MILKBAR

12-14 Princes Hwy, Beaconsfield.

**Now offering over night film processing.**

**24 Exp. \$6.95. Cheapest in town.**

### Trading hours :

Monday to Friday 5 am - 8.30pm  
Saturday 6 am - 8.30pm  
Sunday 7.30 am - 8.30pm

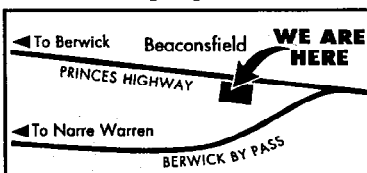
**Ph 9796 1977** Fax 9796 1937



## Beaconsfield Garden Supplies

Specialising in:

LANDSCAPING and  
GARDEN SUPPLIES



- |                |                  |
|----------------|------------------|
| ◆ Sand         | ◆ Pine Bark      |
| ◆ Soil         | ◆ Scoria         |
| ◆ Redgum Chips | ◆ Mushroom Mulch |
| ◆ Garden Mix   | ◆ Crushed Rock   |

SLEEPERS - Old and New

**OPEN 7 DAYS A WEEK  
- WE DELIVER -**

100 Princes Hwy.  
Beaconsfield

**Ph. 9707 5144**

## FAREWELL TO LEN KEOGH

*by Anne Goodman*

It was with sadness that Beaconsfield said goodbye to our friendly Pharmacist, Len Keogh on Sunday the 29<sup>th</sup> of September.

Through the 10 years or so of my failing kidney and subsequent transplant I have taken so many tablets etc you can hear me coming by the rattle. Many times my medication was changed at extremely short notice; Len was always there for me, a rock of support.

Len would always welcome me with a smile and a happy word. Everready to answer that curly question on medication, dosage or the effect on my immune system. I will miss you Len.

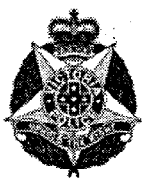
This town will also miss his service but now look forward to getting to know our new Pharmacist, Chris Warne and the continuing care from all the staff who will no doubt carry-on the good work Len extended to customers for thirteen years.

Enjoy your retirement Len and of course your wife and family who will be able to catch up on some of the times you spent at Keogh's Pharmacy Beaconsfield. Happy Suffolk Sheep breeding.

Ed. We look forward to hearing from Len after his 'relaxing' walk in Tasmania at the end of the year.



Above: Photo of Len Keogh and Debrah Elkasovic taken outside the Pharmacy in April 1995.



## Victoria Police Column.

by Senior Constable  
Dave Smith

*I have been invited to contribute regularly to the Beaconsfield Banner as part of the Victoria Police column. In upcoming editions, guest police members will be discussing some of the many and varied duties performed by police, give ideas on crime prevention and road safety.*

I thought that in the first column, it would be appropriate to give a brief background of the Victoria Police Force, as we are a large organization with a long and proud history.

The Victoria Police Force was formally established in 1853. At that time the total strength was 875 men serving a population of approximately 168,000 people. The role of the police in those days was focused primarily on law enforcement. In 1917, the first women were recruited to help policemen in cases involving children. It wasn't until 1924 that policewomen were given full constabulary powers, including that of arrest.

Today, the Victoria Police has a total strength of 11,500 people, consisting of Police, Public Servants and Protective Security Officers, with a population of over 4.6 million. With 328 police stations state wide and over 2000 vehicles, Victoria Police provides support to the whole community 24 hours a day, 365 days of the year. It is also interesting to note that only about 20% of police work today is directly related to fighting crime.

The police mission is to provide a safe, secure and

orderly society by serving the community and the law. This is achieved by performing the following five key functions:

1. Preserve the Peace
2. Protect Life and Property
3. Prevent Offences
4. Detect and Apprehend Offenders
5. Help those in need of assistance.

Victoria Police are happy to be contributing to a high quality of life for all individuals in the community. I would also like to take this opportunity to thank the Beaconsfield Banner for involving Victoria Police in this and subsequent editions.

Finally, if you have any questions or require information about any aspect of policing, I would be happy to assist. I can be contacted via e-mail at [david.p.smith@police.vic.gov.au](mailto:david.p.smith@police.vic.gov.au) or mail to Senior Constable Dave Smith c/o Narre Warren Police Station 1-7 Coventry Road, Narre Warren.

## BEACONSFIELD MIDWAY GROUP



A friendly group of men and women who meet regularly on a Monday afternoon at the Beaconsfield Community Centre. With guest speakers, activity afternoons, lots of laughing, chatting, a cuppa and meeting new friends, who could ask for more.

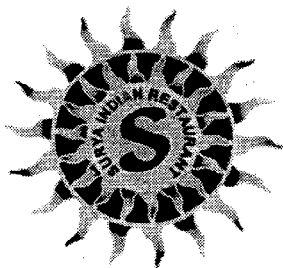
The Annual Cup Day Luncheon is being held as usual and if past years are any indication it will be a fantastic day of entertainment.

Regular outings are planned and held on other days of the week. These have included films, plays, musicals, exhibitions, displays and places of interest.

If you are over 50, they welcome you to join them for a fun afternoon. For more information contact Gwen on 9707 2904.



## SURYA INDIAN RESTAURANT DINE IN OR TAKE-AWAY



B.Y.O.

*Authentic North Indian Tandoori  
Cuisine created by Master Chef*

### BUSINESS HOURS

Open 6 days a week (Tues to Sun)  
5.30pm to 10.30pm

### WE CATER FOR ALL OCCASIONS

Shop 3, 16 - 24 Princes Highway  
Beaconsfield 3807

**9796 1555**

Mobile : 0411 767 470

**10% DISCOUNT  
TUESDAY, WEDNESDAY &  
THURSDAY**

ORDER YOUR TAKE AWAY AND  
PICK-UP BEFORE 7.00PM  
OR  
COME IN AND DINE WITH US

## BEACONSFIELD COMES ALIVE!

On Sunday the 15<sup>th</sup> of September 2002, a group of 28 keen historians gathered at the Beaconsfield Community Centre to discuss the families, streets, shops and history of Beaconsfield. The group was filled with people who had first hand knowledge of the areas history, as many of them had lived and worked in Beaconsfield for many years. Local identity John

Wells lead the days proceedings and he was well supported by Tony Rushton.

There were a large number of photos on display and the group was tasked to try and identify the various people in the photos. It really is amazing what can come out of these sessions! Did you know about the blacksmiths shop in Beaconsfield? What about how the

Railway Station came to get its name? Did you know Mrs. Ann Milne lived in Wood Street in 1890 and held the licence for the Cardinia Hotel?

The group is keen to gather as much information about Beaconsfield as possible so a book can be produced outlining our colourful history. So if you have an old article, photo or book which you think could be

used to assist piecing together the history of Beaconsfield please bring it along to the next session on Sunday 20<sup>th</sup> of October commencing at 1.00pm. At this session we will be discussing more about the founders of the area and the early families.

For further information please contact Garry Runge 97075566 or Tony Rushton 97071765.



L to R - Peg Dundas, Eleanor Reiper, Verna Rattray-Wood, Heather Bunning, Rob Stagg, Jack Barnett, Rena Heathcote (Dawson), Beryl Riddell (Dawson), Pat Reid.

# SUEDOR

## Boarding Kennels & Cattery

*Delivery Service Available*



**Charles Doro  
Geoff McGowan**

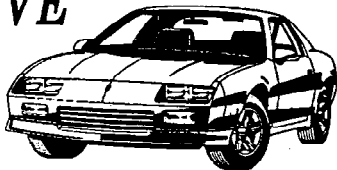
177 Holm Park Road, Beaconsfield

**Telephone: 9707 1175**

Melway Map Ref. 111 K9



## BEACONSFIELD AUTOMOTIVE SERVICES



**Geoff Hudson**

Qualified Motor Mechanic  
Licenced R.W.C. Vehicle Tester  
& Repairer

Factory No. 1  
94 Princes Hwy.  
BEACONSFIELD



Lic Vic Roads  
Vehicle Tester

**PHONE: 9707 4468**

## Beaconsfield Lodge Motel



The Motel has 12 units in a quiet garden setting.  
Stay in one of our double, twin or deluxe rooms.  
There is also a two bedroom unit for families.

*Your Hosts: Robin & Kathleen Best*

**Budget  
Motel  
Chain**

1 Souter St.  
Beaconsfield  
9707 1454



## BEACONSFIELD COMMUNITY CENTRE

Beaconsfield Ave. Ph. 97073449

There are no strangers here, simply friends you haven't met before.



by Tracie Lund  
Co-ordinator

While on the Internet this week. I came across this quote **"Communities are taking charge of their fortunes...and its about setting goals and striving for them"**  
Elizabeth Mansutti June 1998.

That started me thinking...What defines a community? A community is the basic building block of society. It can be defined as people from the same geographical location or people with common needs or goals.

I feel that the Beaconsfield community is an example of a united group of people working towards taking charge of their future and the future of their town. We have some clear achievable and long over due goals finally kicking off. There is the construction of the new community complex, the discussion on roads & traffic. Bike and walk ways are coming under the microscope with a determination by all involved to ensure our town has safe, accessible tracks and paths that will enable us to navigate our way through town safely.

The same can be said about the changes & improvements in the Community Centre. Behind the scenes is a dedicated team of community members whose goal is to keep the Centre

running smoothly & efficiently and to support groups and individuals to utilise the Centre. While I am working to provide a program that will increase life opportunities, choices & skills, and also provide individual or groups the opportunity to enrich their lives through social & educational interaction. This is a task I relish.

However to ensure programming is done to met the needs of the community. I need feedback from you. Remember this is **YOUR** Centre, and it can only be what you help make it. I'm now in the process for planning for next year and I would greatly appreciate your feedback about new courses or groups to run at the Centre for 2003. All Courses are subject to numbers and viability, but if enough of you want something to run, this can be achieved!

While things are on the up & up for the BCC we do have an equipment problem for our playgroups and other children's group. We are in desperate need of durable toys, books, Lego, dolls, puzzles, cars, balls, old clothes hat, bags, shirts, scarves for dress ups. Any donations would be very much appreciated. So next time you are going through your children's old toys or old clothes think BCC!!!



# MAKE AND MINGLE

by Ann Taylor

## CRAFT FAIR

**Saturday 26<sup>th</sup> October 10am - 3pm**

at Lighthouse, Beaconsfield Baptist Church (Cnr Souter Street and Old Princes Hwy).

This is a perfect opportunity to purchase Christmas gifts and craft supplies. You will also be able to see a display of beautiful craft.

There will be greeting cards and a range of handmade craft and gifts and homemade cakes and jams. Craft suppliers will also be there to provide ceramics, wooden items, ribbons, prints and children's craft supplies so you can purchase items to make your own craft.

Full-On Youth Group from Beaconsfield Baptist church will be providing morning tea and lunch with tea, coffee, cool drinks, sausage sizzle and snacks.

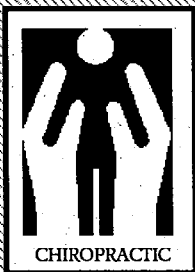
Looking forward to seeing you and your family and friends. Details available Ann Taylor. 9707 1996

Make and Mingle meets every Wednesday during school term at Beaconsfield Baptist Church 10am-12noon.



Fourth term crafts are Scrapbooking, glasscraft, Christmas cards, patchwork, folkart and ceramic bear.

*Above: Photo taken at last years successful Craft Fair.*



CHIROPRACTIC

Members  
Chiropractors  
Association  
of Australia

# BEACONSFIELD CHIROPRACTIC CLINIC

**DR. CRAIG CARTER**

**DR. STEVE PRATT**

Family Chiropractic Care  
Sports, Workcover and TAC.

also - Acupuncture (needles and laser)

**16 - 18 Wood Street Beaconsfield Vic. 3807**  
**Ph: (03) 9796 1110 Fax: (03) 9796 1140**

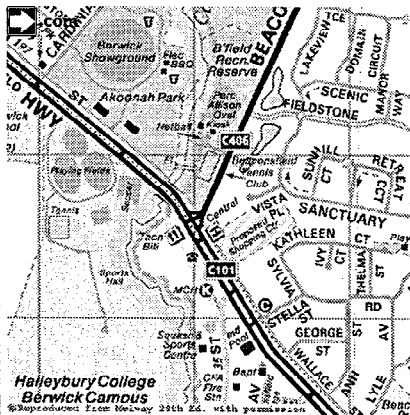
\* Check out our NEW  
Look function room



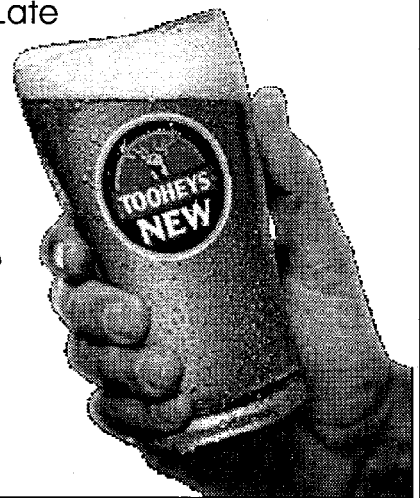
# Live Entertainment Friday & Saturday Phone 9707 1511

## Trading Hours :

Monday to Friday	11am – Late
Saturday	11 am – Late
Sunday	12pm – Late



'brought to you  
by the great taste  
of  
Tooheys New'



*Central Hotel*

Beaconsfield

No 1 Princes Hwy Beaconsfield

'Offering a country style, Pokie Free  
environment'

## MELALEUCA LODGE PRINCES HIGHWAY, BEACONSFIELD



*Motel accommodation including spa suites.  
Wedding Receptions      Conferences  
Functions and all other occasions.*

*Come and have your Xmas occasion with us.*

*For more information contact hosts:  
Christine & Malcolm Silva*

**Telephone [03] 9796 1044**

## Country Womens Association West Gippsland Group



## *Handicraft, Flower Show and Home Industries Exhibition*

Venue:                    Old Cheese Factory  
                              34 Homestead Rd. Berwick.

Date:                    Tuesday 29<sup>th</sup> October 2002  
                              2.00pm. to 5.30pm. Presentations to  
                              commence at 2.30pm.

Wednesday 30<sup>th</sup> October 2002  
10.00am. to 3.30pm.

Admission: Adults \$2.00

***Everyone Welcome***



## WINE & FOOD

*by Keith Goodman*

Anne and I were enjoying a latte at Revival Café in Berwick the other morning, we were discussing the mood/feeling of the place. We settled on it being like an old style homely/family kitchen, a haven.

Chris and Emma Chapple founded Revival almost 3 years ago feeling a gap existed in Berwick for somewhere to relax with good coffee (definitely the best for miles around) and a tasty snack. Frittatas, Focaccias, Lasagna, great soup and the freshest crunchy salad are their specialty. A small range of cakes and biscuits are also available. During 1999 Anne & I spent a month in Italy and on our tour was a young man who was awarded his trip as Australia's best coffee maker or Barista. At every stop we hunted down good coffee; he taught us a lot. Chris Chapple makes coffee as good as any we saw on that trip. Piazza D'oro coffee is his choice of beans.

Maybe others have attempted the same homely atmosphere of recent times but for us Revival still beckons.

Asparagus is again in season; yahoo. If down around Dalmore any morning call in to any of the processors and ask if they will sell direct, most will. Expect to pay around \$1.50 - \$2.50 per kg for a 7 kg box. Share with

friends (or me). Preheat your griller to very hot, rub olive oil all over the asparagus, place under the grill till they start to brown a little.

Serve with some crushed cashew nuts and grated parmesan cheese over and all topped with a poached egg with a runny yoke. Riesling makes a great match.

**Wine** - Some interesting times ahead I think. We are seeing more wine coming on the market through Dan's etc, where for one reason or another the Winery has fallen on hard times and an Administrator is called in to sell off the stock. One recent example was Kings Creek, Mornington Peninsula, Reserve Pinot Noir, normally around \$30 reduced to \$10.50 as a case buy. We will see more in the coming months - watch the Thursday Ads in the daily papers.

Tried recently, Yalumba 'Y' Series Riesling, 2002, \$8; Saltram Semillon, 2001, \$12 a lovely wine and one to put in the cellar for 2-3 years. Two red wines that would take pride of place in any cellar are Seppelts St Peters, Great Western Shiraz, 1998, \$35 and across the road Best's Bin 'O' Shiraz, 2000, \$30. Both will keep for many years, if you must.



# BEACONSFIELD IN CASEY RESIDENTS ACTION GROUP (B.I.C.R.A.G.)

by Ray Fleming

Manuka Road to Soldiers Road extension has to happen now. All residents in Beaconsfield in both Cardinia and Casey have first hand knowledge of the traffic chaos existing in our area. The Manuka Road extension should have been done five years ago as the current development to date certainly testifies to.

Along with all housing we also have big schools (Haileybury College, St. Francis Xavier College and Berwick Secondary College) all using the viaduct, which in a normal winter floods quite often. Heavy vehicles and school buses have to use a railway crossing and unsealed Kenilworth Ave. A traffic count taken in August on Soldiers Road at the intersection of Kevin Close revealed an average of 3500 vehicles per day. Beacon Hills College on Kangan Dr. will open next year. There is also a new hospital planned for Kangan Dr.

A lot of traffic will access Beaconsfield to Soldiers Rd to gain entry to Kangan Dr. with the

increasing development of new housing estates in our area and subsequent huge increase in population it will create an already chaotic traffic situation to one of sheer lunacy. BICRAG and BPA are both united and supporting each other in our campaign to have the Manuka Rd. and Soldiers Rd. extension started now. With all residents support welcome, we intend to make this a State Government election issue. Funding has to come as we have reached an intolerable and unacceptable situation with our traffic problems.

BICRAG has support from Casey Councillor Norma McCausland, State Upper House MP Gordon Rich-Phillips, Berwick Lower House MP Robert Dean and Narre Warren South Liberal Candidate Michael Shepherdson, with all these people in attendance at our meetings.

For further information about B.I.C.R.A.G. contact Ray Fleming, spokesperson for BICRAG, 0407 530037

## YOUR REPRESENTATIVES IN THE AUSTRALIAN PARLIAMENT

### FEDERAL

Latrobe

Mr. Bob Charles, MP

Ph: 03 9762 4066BH

Email: bob.charles.mp@aph.gov.au

### STATE

LEGISLATIVE ASSEMBLY  
Pakenham

The Hon Robert Maclellan, MLA

Ph: 03 5941 1653BH

Email:

robert.maclellan@parliament.vic.gov.au

LEGISLATIVE COUNCIL  
Eumemering Province

The Hon Gordon Rich-Phillips,  
MLC

Ph: 03 9794 7667

Email:

[gordon.richphillips@parliament.vic.gov.au](mailto:gordon.richphillips@parliament.vic.gov.au)

The Hon Neil Lucas PSM, MLC

Ph: 03 9796 1987

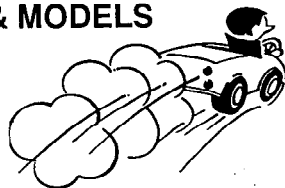
Email:

[neil.lucas@parliament.vic.gov.au](mailto:neil.lucas@parliament.vic.gov.au)

## THE STEERING JOINT WE AIM TO BE THE BEST AT WHAT WE DO

BECAUSE YOUR CAR DESERVES PEOPLE WHO CARE

- ★ FULL MECHANICAL REPAIRS
- ★ SERVICING OF ALL MAKES & MODELS
- ★ ELECTRONIC TUNING
- ★ BRAKE & CLUTCH REPAIRS
- ★ FRONT END REPAIRS
- ★ WHEEL ALIGNMENT
- ★ WHEEL BALANCING ON & OFF CAR



**FREE PICK UP & DELIVERY LOCAL AREA**

EVERY VEHICLE SERVICED AT

**THE STEERING JOINT**

IS DETAILED FREE! OF CHARGE

**YOUR CAR WILL LOOK AND FEEL GREAT**

**ALL WORK GUARANTEED**

**FREE**

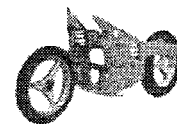
**NO OBLIGATION  
QUOTES**

12 WOOD STREET  
BEACONSFIELD  
PHONE 9707 3393

## MOTORCYCLE & SCOOTER SERVICE & TUNING

ADRIAN KUTCHEL

*Dusk to Dawn Service Available*



**FASTTRACK MOTORCYCLES**

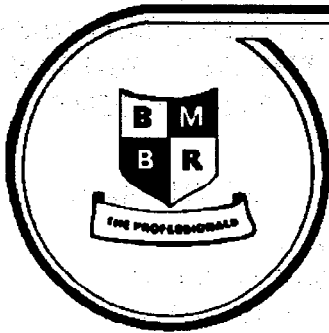
6 Grange Circuit

Beaconsfield 3807

Mobile: 0417 541 760

Fax: 03 9707 0981

Email: [fasttrackmc@aol.com](mailto:fasttrackmc@aol.com)



# Berwick Motor Body Repairs

PTY. LTD.

SPECIALISING IN

INSURANCE SMASH REPAIRS

FOR ALL MAJOR INSURANCE COMPANIES

*Using Universal Car Bench*

*Dedicated Jig System*

*European Paint Baking Oven*

24 HOUR TOWING SERVICE

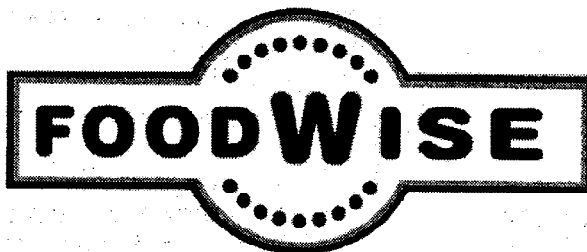
**9796 1199**

BODY SHOP

**5943 2343**

PRINCES HIGHWAY  
OFFICER, 3809

COURTESY CAR AVAILABLE



## BEACONSFIELD'S LICENCED FOODWISE SUPERMARKET

Open 7 Days a Week

**Phone 9707 1092**

Trading Hours

Monday - Friday - 8am. - 8pm.

Saturday - 8am. - 7.30pm.

Sunday - 9.30am. - 5.30pm.



## TAX RETURNS

### CARDINIA SMALL BUSINESS ADVISORS

(Edwin J. Buttigieg & Associates Pty Ltd)

- Individual & Business Returns
- Partnership, Company, Trust & Super Funds
- Taxation & Business Advice
- 14 Day Refund
- Rental Properties
- BAS & GST Advice

REGISTERED TAX AGENT  
Monday to Friday 9am-5pm  
Evenings and Saturdays by Appointment

**SHOP 1, 6-10 PRINCES HWY  
BEACONSFIELD (OPPOSITE  
BEACONSFIELD HOTEL)  
PHONE: 9707 0555**



## Officer Licensed Post Office

432 Princes Highway (at the lights)

Phone/Fax 5943 2300

**Open on Saturdays 9-12**

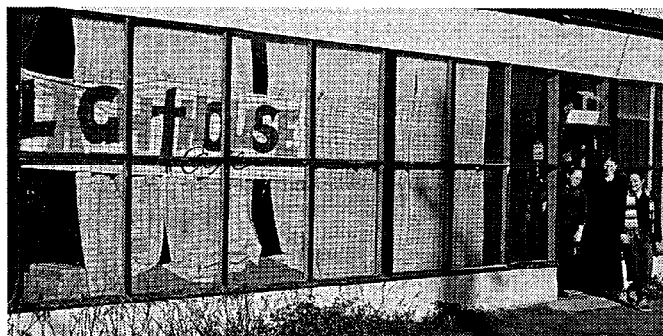
Postal & Fax Services  
Copying  
Cards, gift wraps, stationery  
Bank deposits & withdrawals  
Pay most bills  
Internet & Phone Cards

**Easy parking & few queues**



## THE VOICE OF THE BAPTIST CHURCH

*by David Morland*



The step from childhood to adulthood is perhaps the biggest step any human being makes. The step from being the dependant child to being the independent adult is fraught with moments of tension. The young teenage sees himself/herself as already an adult, while mum and dad see the same young teenage as still a child. Children we understand and adults we understand, but teenagers!!

The teenage years are not always smooth sailing. One psychologist jokingly suggests that the best thing we can do with our kids is put them on the moon at 13 and then let them come back at 20!

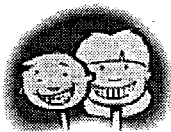
Teenagers certainly need a lot more freedom than children, but on the other hand young teenagers can hardly be given all the freedoms of an adult. Young teenagers at home? Looking for some place safe for your kids to go to? Let me tell you about The Lighthouse.

The Lighthouse is the Beaconsfield Baptist Church teenage drop in centre. Open every Friday night 7:30 till late. What used to be the old Antique shop on the highway has been converted to a youth hall. A great place for teenagers to hang out. Well run with adult supervision. A safe secure environment. Feel free to call in any Friday evening. Or phone 0407 806 962 for more info.



## Prep Transition at Beaconsfield Primary School Book Now !

It's Prep transition time at Beaconsfield Primary, and we have a terrific program organised to help our new students and their parents settle into their new school.



### TRANSITION PROGRAM A

The children from Beaconsfield Kindergarten will be visiting our school on-

- ♦ Wednesday 30th of October 2002
- ♦ Wednesday 13th of November 2002

Sessions run from 9.10am - 10.50am.

### TRANSITION PROGRAM B

All other new preps should attend the following sessions-

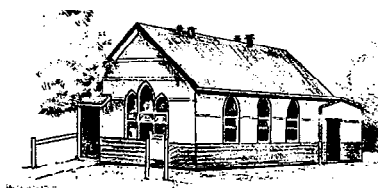
- ♦ Wednesday 23rd of October 2002
- ♦ Wednesday 6th of November 2002

Sessions run from 9.10am - 10.50am.

**CONTACT THE SCHOOL TODAY  
TO RESERVE A PLACE FOR YOUR CHILD**

**9707 1510**

## BEACONSFIELD BAPTIST CHURCH WELCOMES YOU



### Church Services:

- ☐ 10:30am Family worship. With morning tea.
- ☐ 7pm Church for young people. With supper.

### For kids:

- ☐ Happening (Sunday School) - 9am Sundays
- ☐ Junior Youth Club - Friday evenings. (Ring 5940 1975 for a program)

### For teenagers:

- ☐ Senior Youth Club - Saturday evenings. (Ring 5941 3531 for a program)
- ☐ Lighthouse Café at the church every Friday evening.

### For all:

- ☐ Make & Mingle – friendship and craft every Wednesday 10am to Noon. (Ring 9707 1996 for more details)

### Plus lots more:

**Never hesitate to call our pastor -  
David Morland 9707 4160.**

## FRIENDS OF CARDINIA CREEK SANCTUARY

*by Shane Hester*

Spring has been a busy time in the reserve with several thousand trees being planted along the creek at the Ingles Rd end of the reserve. The majority of the Wandering Jew has been controlled and it is hoped that the plantings will grow quickly to out compete any Wandering Jew that might grow back.

With all the planting out of the way, its time to revisit past planting sites to check up on progress. One unavoidable task is removing weeds which I am glad to say is now a manageable task. Over the past few years targeting a specific weed at a time has resulted in all the major weeds at the point of eradication. So far, Thistles and For Get Me Nots appear to be the biggest problems this summer.

A new boardwalk has been constructed in Allen St. reserve over a wet and

boggy part of the path. This was a joint project between Casey Shire and The Friends of Cardinia Creek Sanctuary. Graffiti and vandalism has been a problem in the Allen St. reserve area in the past, however the past few months have seen a vast improvement.

The Swamp Paperbark or *Melaleuca eficaifolia* is one of the most dominant species in the sanctuary. At this time of the year it is also the dominant flower. The flowers are creamy white and resemble a bottlebrush only smaller. They are easily visible when driving along Emerald Rd and attract a number of nectar feeding birds.

The Friends of Cardinia meet on the fourth Sunday of the month at the car park opposite Holmpark Rd at 9.00am.

For more information call 0407874143



*Above: the Swamp paperbark in full bloom.*

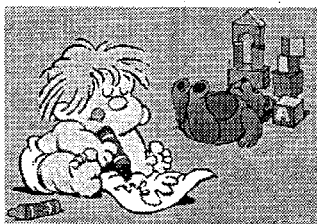
## McPHEES SOLICITORS

*Your Local Solicitor Angela McPhee Principal*

- \* Fixed Price Conveyancing - *Please call for an obligation free quote*
- \* Property
- \* Wills and Probate
- \* Motor vehicle accidents
- \* Debt recovery
- \* Insurance claims
- \* Personal injury claims
- \* Contract advice

First consultation free - Phone 9707 0590  
Shop 1, 6-10 Princes Hwy Beaconsfield

## BEACONSFIELD CHILD CARE & EARLY LEARNING CENTRE 6 Stella Street BEACONSFIELD



Opening Hours 7.00am - 6.00pm Monday to Friday

### Child Care Fees:-

#### Full Time

Weekly Monday to Friday \$160 Per Child

#### Part Time Permanent

Daily: \$35.00

Half Day Sessions \$20.00

Casual Daily: \$45.00 Per Child

#### School Children

Before/After School Care: \$8.00 Per Child

**SESSIONAL 3 YEAR AND 4 YEAR OLD KINDERGARTEN**

**B.H 9707-5532 A.H 041-951-2243**

Government Assistance Available



## FROM THE ACCOUNTANTS' DESK

GRAEME J TAYLOR

C.A.

All businesses and personal taxpayers should continually monitor changes that may effect them. Some items of interest recently announced or introduced are as follows:

### Unclaimed Monies

The ASIC has announced that over \$200 million in money from forgotten bank accounts, insurance policies and company share sales is awaiting to be claimed by the rightful owners. The ASIC also announced that its' consumer website at [www.fido.asic.gov.au](http://www.fido.asic.gov.au) is available for an instant search for unclaimed money. The data goes back to 1989 for savings bank accounts, 1959 for some trading bank accounts, 2000 for credit unions and building societies and 1988 for unclaimed life assurance policies that have matured.

### Industry Benchmarks

The Tax Office makes available tax data statistics including financial ratios for most industries. Business owners and tax advisors can use these financial ratios to compare the performance of a business with the industry average.

The ratios are a key tool in the Tax Office compliance program as they help identify entities that may be operating outside these standards including those that may be active in the

cash economy. The level of compliance review is being expanded and broadened to include more industries.

### Deductions for Business set up Costs

Under the uniform capital allowance system, certain types of business related capital expenditure can now be written off over a five year period. This deduction is available only for expenditure incurred from 1<sup>st</sup> July 2001 and was previously not deductible. Examples of deductible expenses are the costs of incorporating a Company, forming a partnership or creating a trust. Expenditure incurred in relation to leases or to the acquisition of a franchise or goodwill are not deductible.

### Self Employed Superannuation Contributions

The fully deductible amount for Superannuation contributions made by self employed persons increased from \$3,000 to \$5,000 on 1<sup>st</sup> July 2002. Contributions above the fully deductible amount will continue to be 75% tax deductible up to maximum deductions as follows for 2002/3 year:

Under Age 35	\$15,201
Age 35 to 49	\$45,184
Age 50 to 70	\$114,521

*You should keep in regular contact with your Accountant to ensure that you benefit from available concessions but also to ensure that you comply with all the regulations.*



*Learn To Swim  
At Beaconsfield Swim School*

Come & Join Us ~ We Teach All Ages From 6 Months

*Birthday Parties*

Sit Back & Relax ~ We Do Everything. All You Do Is Bring The Cake

**Beaconsfield Swim School**

**"BEST IN AQUATIC ACHIEVEMENT"**

**46-50 Princes Highway, Beaconsfield 3807**

**Telephone: 9796 2288**

**Fax: 9796 2311**

email: [swimming@cinel.com.au](mailto:swimming@cinel.com.au)



Member of the Swim School Owners  
Association of Australia

## SALLY'S GARDEN

### NEW PLANTS FROM OLD.

It is economical and very rewarding to produce your own plants by various means of propagation. Some of the propagating methods are by seed, tip cuttings, hardwood cuttings, layering, dividing, suckers, grafting and budding.

Growing plants from seed is an easy way to produce them but these seedlings do not always turn out exactly the same as the parent plant.

Seeds that have a hard casing should be softened before planting, which can be done by covering them with boiling water and leaving them overnight.

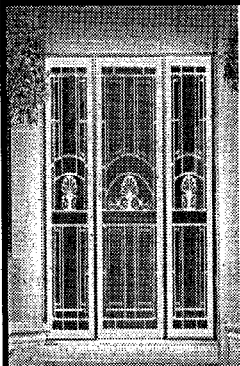
Plants produced from seed of variegated plants will be green. Propagating from seed is used for vegetables, annuals, biennials, perennials and native plants.

If you require the new plant to be the same you will need to try some cuttings or perhaps do a layer. The medium in which the cuttings are struck needs to be completely free of minerals and plant foods. A good medium is coarse river sand which has had both the fine and large particles sieved out. A suitable medium is three parts sand and one part peat moss.



## PAKENHAM DOORS & SCREENS

**"THE SOUTH-EAST'S BEST RANGE OF  
AFFORDABLE SECURITY DOORS & SCREENS"**



For Friendly & Helpful Advice  
Call Lorraine, Roly or Justin Penglase

**5940 2225**

**Mobile 0418 398 319  
AUTHORISED DEALER**



SECURITY DOORS & WINDOWS

Or Visit our

Factory/Showroom 2/1 Purton Rd. Pakenham

- \* SECURITY DOORS
- \* FLYSCREENS
- \* WARDROBE DOORS
- \* CANVAS BLINDS
- \* SECURITY GRILLS
- \* SHOWER SCREENS
- \* SUPA SCREEN DOORS

**FREE SHOP AT HOME SERVICE  
SAVE!  
BUY DIRECT FROM MANUFACTURER**

We are here  
Mel Rd Map 215 6A



TOOMUC  
VALLEY  
RD.  
HOTEL

## WOOD OR WOODS ?

One of the many interesting stories found recently whilst gathering historical information contained details about the railway station.

In 1878 correspondence is recorded by property owner Mr. William Brisbane requesting a railway siding at Beaconsfield. The then Commissioner of Railways was Mr. John Woods. Mr. Woods and a large party of excursionists travelled to Berwick and vehicles transported them to Beaconsfield, where Mr. Brisbane pointed out the desired location of a railway siding. Mr. Woods promised that it would receive early attention and on 1<sup>st</sup> December, 1879

Beaconsfield Station opened for Traffic, Passenger and Goods.

Woods or Wood Street? This is a question quite often asked.

Now it would seem a reasonable suggestion that because of the importance of a Commissioner of Railways that the road would be named after Mr. John Woods.

In future Banners we would like to feature articles in relation to street names and their origins. If you have or know anymore information about streets like Woods St., we would like to hear from you.

*The photo below of Woods Street would have been taken after 1920, as the monument was built in 1920. Note the keroscene lamp (on the left hand side near monument). This lamp was lit by an American lady daily. There was at least 3 of these lamps in the township that we know of. One was at the Railway station, pictured in a 1906 photo and the other was located outside the public hall.*



  
CARDINIA

## ARCHITECT APPOINTED FOR BEACONSFIELD CENTRE

Melbourne architects Prior and Cheney were appointed to design the Beaconsfield Community Centre at this weeks council meeting.

The firm, who are gaining a reputation for quality community building design in the shire with the Cardinia Cultural Centre being their most prominent landmark, were chosen from a group of four companies available through the council's professional services consultants contract.

Mayor, Keith Ewenson said, 'Prior and Cheney demonstrated through their submission they were the best candidates for this important community project based on their past experience, their approach to community consultation and their ability to meet construction deadlines.'

Council received a grant of \$518,475 from the State government's Community Support Fund in July this year that has enabled the design stage of the \$2.75M project to commence immediately.

'The tendering process for stage 2, the appointment of a builder, will begin in May 2003,' said Mayor Ewenson. 'Actual construction should commence in July 2003 and we should see the opening event being held around the middle of 2004.' 'This is an exciting and much anticipated facility for the Beaconsfield community, the Mayor said. The town is growing fast and is in need of a modern, spacious and multi purpose complex.'

A project control group comprising representatives of the Beaconsfield Kindergarten, Community Centre and the Progress Association and to be chaired by the Mayor was also appointed at the Monday meeting. The group will be involved in providing advice to the architects during the design stage about the requirements of the different user groups.

*Footnote: The Banner acknowledges this report from the Shire's website. To keep up with all the Shire news visit the upgraded Cardinia shire website. [www.cardinia.vic.gov.au](http://www.cardinia.vic.gov.au)*

**Yes! Unlocked at Last**

# Beaconsfield Station Estate

RIGHT AT THE BEACONSFIELD RAILWAY STATION

Grand Subdivisional Sale by Public Auction

**Saturday, 30th April, 1921**

At 3 o'clock, on the Estate, in a Spacious Seated Marquee

THE PROGRESS OF BEACONSFIELD HAS LONG  
AWAITED THIS IMPORTANT SUBDIVISION

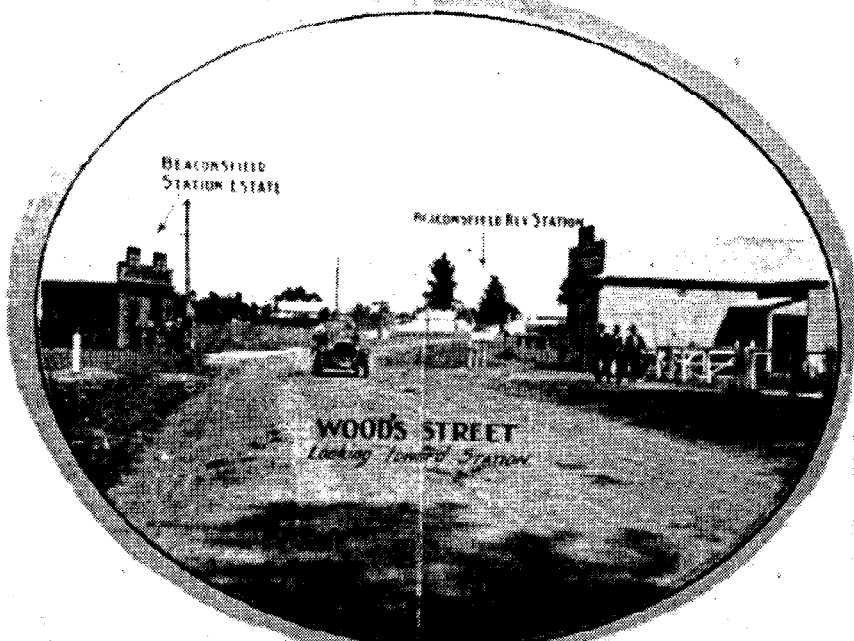
## Remember

Beaconsfield Station Estate is right in the centre of the Town and adjoining the Railway Station. With the advent of the Corporation and electric supply to the Railways, the reticulation of the Beaconsfield Naval Base Water Scheme, the Morwell Electric Light Scheme practically assured and then available to the Estate, suburban facilities will be enjoyed.

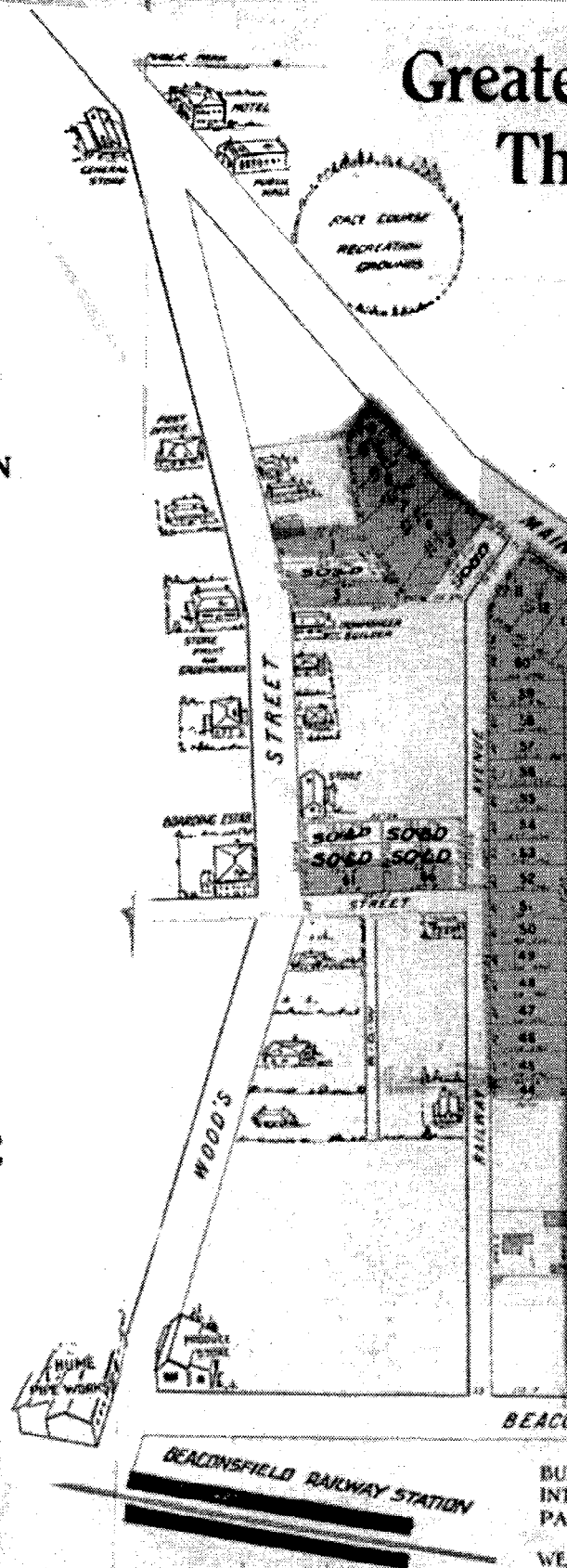
## Think

What a glorious opportunity is now afforded intending Home Builders, Storekeepers, Investors and others, to secure a gilt-edged security—which, without doubt, WILL RAPIDLY ENHANCE IN VALUE.

**DON'T MISS THIS GREAT CHANCE**



Wood's Street, Looking towards Station



WALTERS & CRESWELL, Licensed Surveyors,  
14 Temple Court, Melbourne

Plans and Full

**DUNLOP & HUNT HO**

Subdivisional Experts and Property Salesmen

Who will sell through their Auctioneer, W. PAGE



Chance Offered to  
Public for Years Past

**140 CHOICE  
—LOTS**

**SPLENDID BUSINESS  
AND  
RESIDENTIAL SITES**

*Exceptionally  
Easy Terms*

**£3 DEPOSIT  
PER LOT**

Balance 20/- per Month  
Interest 6 per Cent  
Payable Quarterly

FRONTAGES TO MAIN GIPPSLAND ROAD—BEACONSFIELD AVENUE  
WOOD'S ST. (Made Streets)

Direct to Station—RAILWAY AVENUE, SOUTER STREET,  
HORNER and GOFF STREETS

BEACONSFIELD STATION ESTATE ADJOINS THE STATION

TAGES OF ELECTRIC LIGHT and WATER

BEACONSFIELD STATION ESTATE HAS FRONTAGES TO 3 MAIN MADE  
ROADS

SURROUND BEACONSFIELD STATION ESTATE

**TITLE CERTIFICATE**

Solicitor: J. RATU THOMPSON, 120 Queen Street, Melbourne  
TEL. C 432

SS MEN—Secure Your Position  
ING HOME BUILDERS—Choose Your Home Future Site  
S, LOOK AHEAD—Buy a Lot or Two, and make a bank for  
the Children  
NDERS—Buy a Lot in a Town with all the advantages of a  
inner Suburb, combined with the beauty and freshness of a  
country house

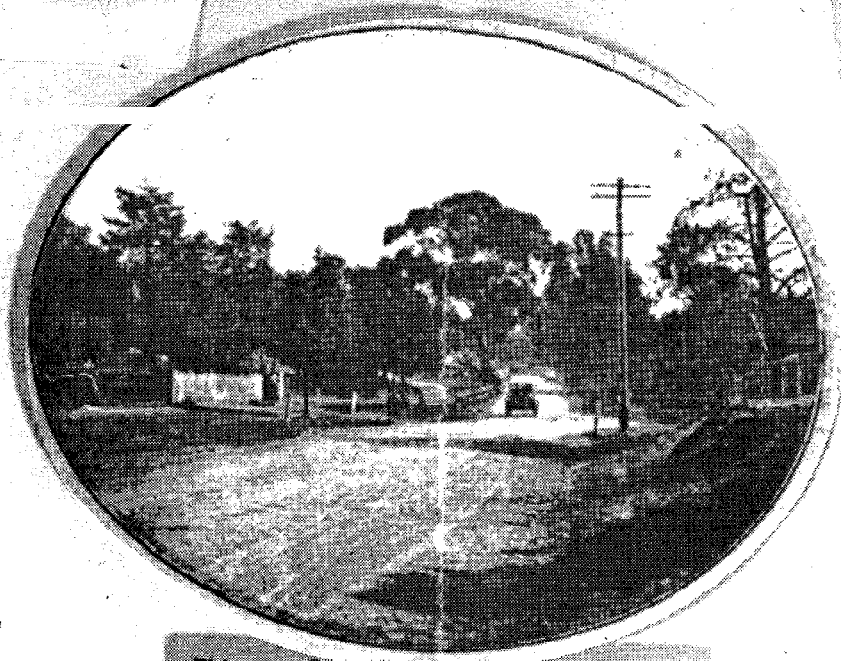
Particulars from

**E BUILDERS LIMITED**

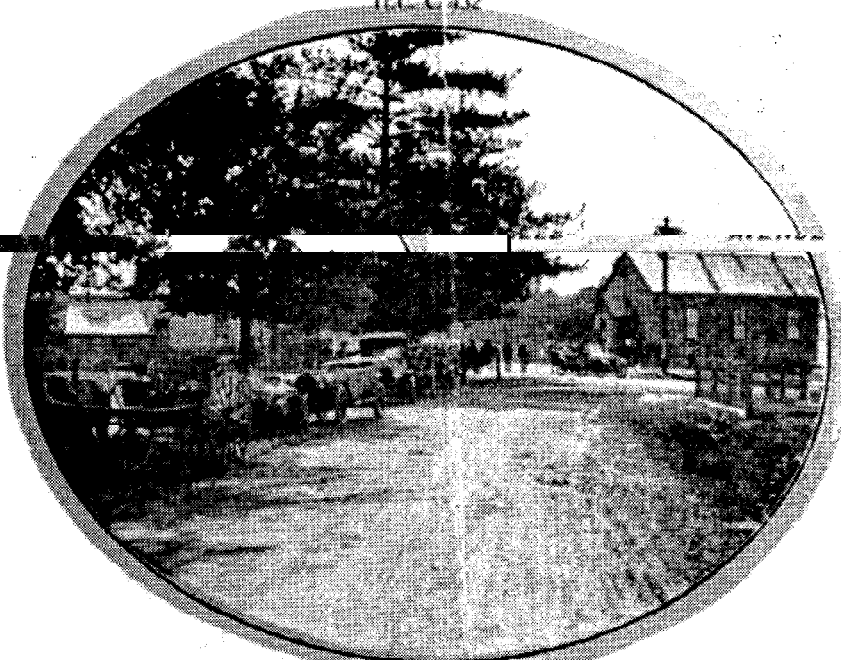
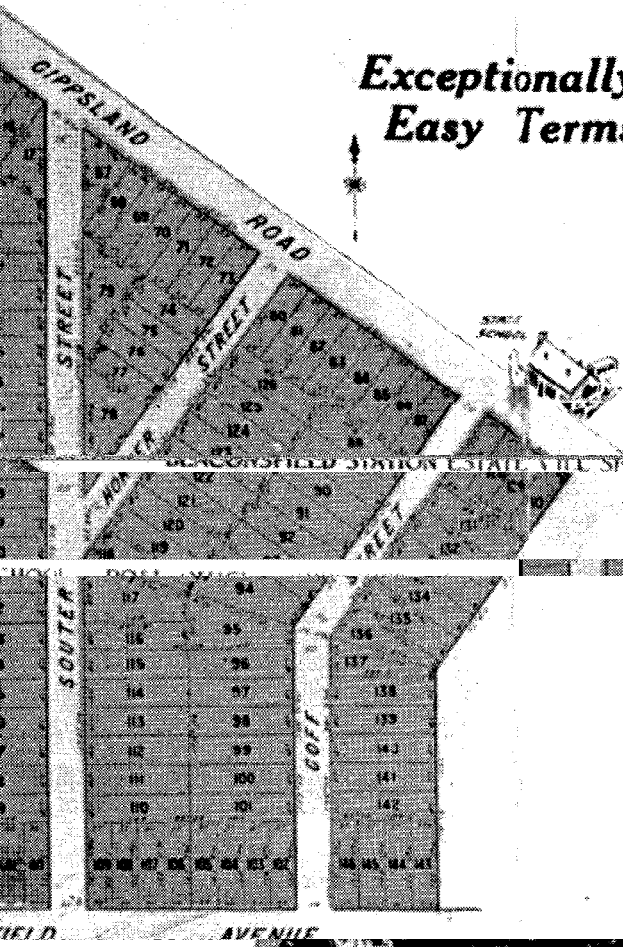
317 COLLINS ST., MELBOURNE

GUSON

Phones: Central 10104-10115



Picturesque Spot, adjacent to Estate, on Main Road



Main Road

# Open Garden

(over 350 roses on display)



Sunday 17th November 2002

315 Pakenham Road

Pakenham

(Melway map 315 D10)

10am—4pm

Devonshire Teas, craft and plant sales



Entry \$5



Proceeds to Mucopolysaccharide Society

## OPEN GARDEN

Wander through this beautiful garden which has over 350 roses on display, with Cottage and Native Garden areas. After a comfortable stroll through the garden take in the views while enjoying Devonshire Tea or Sausage sizzle. Plants and Craft will be on sale.

Proceeds from the day will go to the Mucopolysaccharide Society.

Mucopolysaccharide is a rare genetic, life threatening disorder, affecting children.

For details of this open day contact Wendy Boon Phone - 59 432407.

"A life is not measured by the number of days, months or years that is lived, but by the effect that life has on other people who touch it,

It is not measured by the length of it's day or the height of it's achievements but by the breadth of it's influence"

## ORIGINAL COPIES WANTED

Beaconsfield resident Meg Reed is researching family history. She is trying to locate the originals of the photos pictured, so she can have copies made.

If you have any information please contact the Banner production team, phone, email and postal details are on the front of the Banner.

This copy was courtesy of the Pakenham Gazette dated April 1988.



Decorations festoon the hall for this ball, as revellers gather around the orchestra for a photograph.



The crowd enjoys itself at the Returned Soldier's Ball held in Berwick on 19th May, 1937.

## BEACY'S NOTICE BOARD

FOR ADVERTISING CONTACT WILLEM BOON 9707 5053

Qualified  
Horticulturist

### Shane Hester

- \* Soft Landscaping
- \* Native/Indigenous Gardens
- \* Formal Gardens
- \* Rose Pruning and Maintenance
- \* Weed Spraying

mb: 0407 874 143  
email: shester\_1@hotmail.com

**Jamie Wolff**

Sales Consultant  
0438 795 290

### Bowman's Track

Cnr O'Neil Road &  
Princes Highway  
Beaconsfield Vic 3807  
Phone (03) 9769 9177

### GF & KL PLUMBING

**Licensed Plumber & Gasfitter**

Reg.No.24612 ABN 22 230 248 298

**Graeme Baldwin**

*Ducted Heating & Cooling  
All types of Commercial Maintenance*

5 Sanctuary Way,  
Beaconsfield 3807

Mob: 0412 999 015  
Ph/Fax: 9768 9828

### HAYES ⚡ POWER

**ELECTRICIAL SERVICES**

REGISTERED ELECTRICAL CONTRACTORS  
No 11050

Domestic & Commercial  
AUSTEL LICENSED

**Paul Hayes**  
22 Amelia Close  
Beaconsfield  
Victoria 3807

**MOBILE: 0418 174 522  
A/H FAX 9707 3221**

## BEST STUMP AND TREE REMOVALS

Call Ross: 0427 101 929

Home: 9762 5813

If you would like to advertise in  
this space, contact Willem Boon  
9707 5053.

Accountant & Consultant  
Registered Tax Agent



**Mark A. Sage**  
B. BUS., CPA

P.O. Box 221  
Beaconsfield Vic. 3807

Telephone / Fax: (03) 5944 3734  
Email: msage@net2u.com.au

Housing Investment  
Business Finance  
Management Services

**Simon Conn**

*connsult financial services*

Mob: 0419 115 685 ♣ Fax: 5944 4401 ♣ A.H. 5944 3471  
11 Armstrong Road Upper Beaconsfield 3808

# BEACY'S NOTICE BOARD

## WINDOW CLEANING

Domestic & Commercial

**JOHN PLOWMAN**

18 Years Experience

**Ph. (03) 9796 2994**

or

**Mob. 0418 597 630**

If you would like to advertise in this space, contact Willem Boon  
9707 5053.

## KNOT JUST WOODEN TOYS



Max and Henny Blair

Wooden toys, Childrens furniture,  
Dolls, Shadow boxes and much more.

Shop 2/26 Wood St.  
Beaconsfield 3807  
Ph: (03) 9796 2355  
ABN 63380816980



## LEIGH HUNTER REMOVALS & STORAGE LOCAL COUNTRY INTERSTATE



PRE-PACKING SERVICE / ANTIQUE & PIANO SPECIALIST

**PHONE: (03) 9707 5700 OR 9768 9153**

**LOT 103 - 110 Princes Hwy. Beaconsfield Vic. 3807**

## BEACONSFIELD PODIATRY CENTRE

"Getting better all the time"™

### Services

General Care, Foot Orthotics  
and Insoles, Sports Podiatry,  
Children's Problems,  
Rehabilitation, Veteran Affairs...

**Steven Hainsworth**

B App Sci (Pod.), M.A. Pod A.  
Email: steven@alphafoot.com

**7/70 PRINCES HWY.**

**BEACONSFIELD**

'CARING FOR FEET'

**Ph/Fax: (03) 9707 4922**

## Beaconsfield Counselling Service

Children, Adolescents and Adults.

Educational assessments, toddler problems, bullying.  
Slow to learn, Stress and workplace problems.  
Anxiety and Depression, Pain, Trauma and injury,  
Grief, assertion and self esteem, confidence and motivation.

**Telephone : 03) 9796 2277 (Voice mail)**

**Consulting: Suite 3, 27-30 Wood St.,**

**Beaconsfield. 3807**



## CGM SECURITY

Domestic & Commercial  
Alarm Installation & Service.

- \* Back to base monitoring available or
- \* Save on monitoring costs & have your alarm call your mobile.

For an obligation free quote call:  
**Claudio Marinelli 0413 777 729**

## DENTURE CLINIC

ADVANCED DENTAL TECHNICIAN

*Paul Reed*

\*Full Denture Services - Mouthguards

\* Denture Repairs - Relines

Victorian Pensioner Denture Scheme.

Veteran Affairs Patients, Workcare Claims

Private Health Rebates

14 Wood St.  
Beaconsfield.

**Ph. 9707 4015**

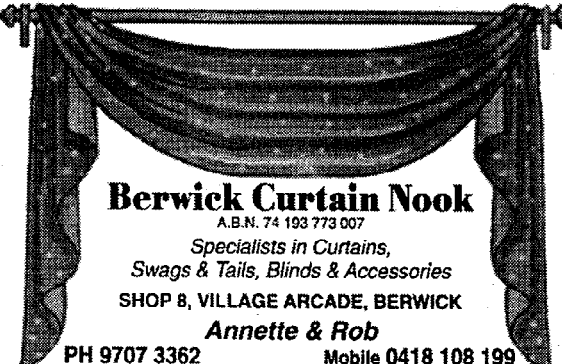
# BEACY'S NOTICE BOARD

## GRAEME TAYLOR A.C.A. CHARTERED ACCOUNTANT

- \* Registered Tax Agent (E.L.S. Facilities)
- \* Registered Company Auditor
- \* Thirty years professional experience

Providing personalised financial, taxation, management accounting, auditing, superannuation and corporate secretarial services.

Appointments at Oakleigh or Beaconsfield  
Okey Stopp & Taylor 9569 7516



**Berwick Curtain Nook**  
A.B.N. 74 193 773 007  
Specialists in Curtains,  
Swags & Tails, Blinds & Accessories  
SHOP 8, VILLAGE ARCADE, BERWICK  
**Annette & Rob**  
PH 9707 3362 Mobile 0418 108 199

John Leighton trading as



170 Payne Rd.  
Beaconsfield, Vic. 3807

### Specialising in Home & Small Business

- ◆ Repairs, Upgrades & Software Installation.
- ◆ Database Management Systems.
- ◆ Windows, MS Word & Excel Training.

**Ph: 9796 2896**

## ELECTRICAL CONTRACTOR



*Domestic, Commercial,  
Industrial  
installations and repairs*

**PETER STEELE - R.E.C. 8772**

**Phone 9707 4906**

**Mobile 0418 392 370**

23 Hudson Street, Beaconsfield.

## TYREPOWER

**RAY LAWN**  
*Proprietor*

### BERWICKTYREPOWER

43 Clyde Road, Berwick, Vic. 3806  
Tel 9707 3177 Fax: 9796 1836

## Classy Bags

**PARTY PLAN**

Specialising in Handbags, Travel Goods & Accessories

**Sue Tregenza**

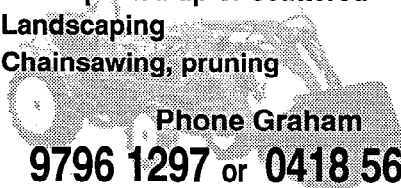
Mobile: 0407 562 025

Phone: 9796 2972

Fax: 9796 1287

## MOWING / SLASHING ROTARY HOEING

- \* Large or small areas
- \* Grass picked up or scattered
- \* Landscaping
- \* Chainsawing, pruning



**9796 1297 or 0418 563 456**

## FCC PRINTING

ABN 55 002 849 689

**PTY LTD**



**ROLAND & LESLEY OLNEY**

21 HEATHERDALE RD RINGWOOD 3134

**TEL: 9873 0777**

OFFSET DESIGN FOIL DIGITAL LETTERPRESS



Michael  
Muaremov  
& Associates Pty Ltd  
A.C.N. 090 568 862

## **PUBLIC ACCOUNTANTS**

**Want an accountant who understands your needs?**

**Look no further.....** Michael Muaremov & Assoc. are the friendly accountants who will personally attend to your accounting and tax requirements. After hours and Saturday appointments are no problem! So you can be assured of a warm, friendly welcome.

*With a large variety of services that include:*

- Preparation of income tax returns
- GST -Preparation of **Business & Instalment Activity Statements**
- Company, Partnership and Trust Establishment & Tax Returns
- A.S.I.C. Lodgements ●Cash flow management
- Workcover & Superannuation Compliance for businesses
- Monthly, Quarterly accounting & bookkeeping services
- Preparation- business plans, budgets & performance evaluations
- Computer evaluation and instalment advice
- On and off site **QuickBooks and MYOB training**

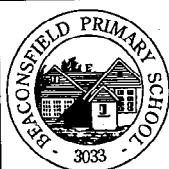
REGULAR SEMINARS AND TRAINING on the LATEST TAX  
CHANGES INVESTMENTS AND GENERAL BUSINESS ADVICE

To ensure you receive the maximum refund you're entitled to  
on your **2001 Individual Tax Return from \$88.00** incl. GST,  
call into our offices located at:

34 Princes Highway, Beaconsfield

Call us on **(03) 9769 9134**

**No client is too BIG or too small**



## **BEACONSFIELD PRIMARY SCHOOL**

Cnr Lyle Ave. & Princes Hwy.  
P.O. Box 251. Beaconsfield. 3807

**We provide  
a stimulating curriculum  
in pleasant surrounds for  
all children Prep-Year 6.**

**Parents and children are  
welcome to visit the school.  
Phone for an appointment  
to arrange a tour  
with the Principal.**

**9707 1510**



***From a fine tradition to an exciting future.***

# **FROM THE PAST AT GUYS HILL**

*by Charles Wilson*

About 1937, the residents of Guys Hill became aware that something unusual was happening at the bottom of High Street.

Patricia Stuart, clearly remembers a Sunday about that time when she was aged 10. Whilst out for an afternoon walk with her aunt, they passed a tennis court on the High Street property which was fairly visible from the road, but had a wide canvas surround that hid the lower part of the court and the players. On this day there was a gusty wind, and the players were at times plainly visible through the bushes, obviously naked, quite unconcerned about passers by, and apparently unaware of their exposure. The Colony was low key and responsible, and had good facilities. The club house was heated by a double wood stove, which was also used for cooking, and had adequate dining and other furniture.

Sleeping accommodation was provided by three huts each of which contained bunk beds and two tramcars which had standard beds.

Daytime entertainment facilities included a croquet lawn, a tennis court, a maypole, a see-saw, and a swimming hole in nearby Cardinia Creek.

In the Summer months, amusing glimpses of the inhabitants, carrying only a parasol to avoid sunburn, were reported.

A Mr. Bill Wheeler, a butcher in Mildura was reputed to be the owner.

The fires of 1967 were a major disaster for the colony. The C.F.A. was able to stop any damage to their property, but all the trees were burnt, which deprived them of the necessary cover which would allow them to enjoy their outside ball games.

Some members spoke to the fire Captain and expressed their appreciation that there had been no property loss, but stated they were disappointed that the bush had not been saved.

In 1968 there was another bushfire, this time the outcome for the club was disastrous, all the accommodation being destroyed. After 30 years the colony closed, the property was sold in 1995.

A few local tales remain concerning the Colony - perhaps some are true? When Alan King and his wife Shirley took over the shop at Guys Hill, from the Bakers, Mrs. King's parents, the usual stock take of goods on the shelves was performed, Alan was surprised to find a very large number of bottles of Citronella on the shelf, and felt it was more than he could ever sell.

After a while his curiosity overcame his shyness, and he asked his father-in-law the reason. "Oh" he said "you'll need all that, the mosquito's are bad and the nudist colony uses a lot."

*Cont. page 29*





## CROSSWIRED

by David Griffiths

### LITTLE GEMS!

Sometimes you find a gem of a film when you least expect it.

I recently saw the Australian film 'Garage Days', and I was presently surprised. When I first heard about the film it didn't make me want to rush out and see it, however it had two things in it's favour. I love films about bands (check out 'Rockstar' and 'Almost Famous' if you want to see two good 'band' films), and I'll

generally support any Australian film that comes out by giving it a chance.

If I'd dug deeper earlier I may have been more eager to see the film. I quickly learnt that the film was directed by Aussie, Alex Proyas, and if his last pieces of work (he directed 'The Crow' and 'Dark City') were anything to go by, than 'Garage Days' at least had a good pedigree behind it.

Well now having seen 'Garage Days', two things stand out. Number one is this film takes a very good moral stance against pokie

machines. In fact you could easily argue that the only real 'baddies' in the film are pokie machines, which prevents the band from getting any gigs.

The second thing that stands out is that this film actually has a dramatic storyline (something most 'band' films don't have). With storylines that jump from a young woman coming to terms with being pregnant, a love triangle that threatens to split the band and an interesting look at mental illness, the film will keep any audience captivated.

This film also showcases the up and coming (and promising) Australian talent. Pia Miranda, Kick Gurry and Maya Strange prove that Australia's talent pool is teeming with talent. Oh...and while they don't get star billing, Yvette Duncan and Holly Brisley are excellent in challenging (and interesting) roles.

So if you're in the mood for a little gem of a film, check out 'Garage Days'.

Most of the films mentioned above should be available from Beaconsfield Family Videoland, if not now, then in the near future.

## BEAKY'S BAKEHOUSE

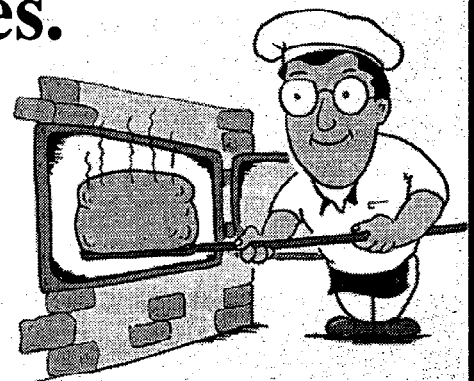
*Baking Fresh For You!*

**Try Our Delicious Range  
Of Home-Made Pies,  
Pasties, Bread And Cakes.**

**9796 1155**

**5/2 Princes Hwy.**

**Beaconsfield**



# OnYa

## Restaurant & Bar

*Enjoy top quality dining in a relaxed atmosphere at Onya!*

**STEAK - SEAFOOD - PASTA**

**\* 3 COURSE SPECIAL - TUESDAY TO THURSDAY ONLY \$22. PER PERSON , KIDS MEALS \$9.**

**FOR BOOKINGS PHONE 9707 0091**

6 Princes Highway, Beaconsfield

Open Tues - Sat. 5pm - until late - Functions a Specialty

# Eclipse

- antennas
- electronics
- security systems
- ducted vacuum systems

## WARNING

Burglars are operating in your area.



**Protect  
Your  
Home &  
Family**

**Install a Back-to-Base  
Monitored Security  
System.**

Fully Installed  
\* Conditions apply **\$95**  
\$47.90 per month monitoring fee

**Do You Suffer  
Allergies or Asthma?  
For A Cleaner, Healthier Home  
Install A  
DUCTED VACUUM SYSTEM**



**From  
\$790  
Fully  
Installed**

*Recommended by*  
**The Asthma Foundation**

**Bags, Accessories & Service  
for all Major Brands  
DIY Kits Available**

## Jaycar

### ELECTRONICS

**AUTHORISED DEALER**

- Video Accessories
- Antennas
- Computer Accessories
- Christmas Lights
- Audio Leads
- Batteries, Kits,
- Lighting & Tools
- Wire & Cable
- Solar Panels
- And much much more

**Shop 6, 6-10 Princes Highway, Beaconsfield 3807**  
**Tel: 9768 9007 Mob: 0414 665 088** [www.eclipsesecurity.com.au](http://www.eclipsesecurity.com.au)



# FROM THE PAST AT GUYS HILL

by Charles Wilson  
Cont. from page 26

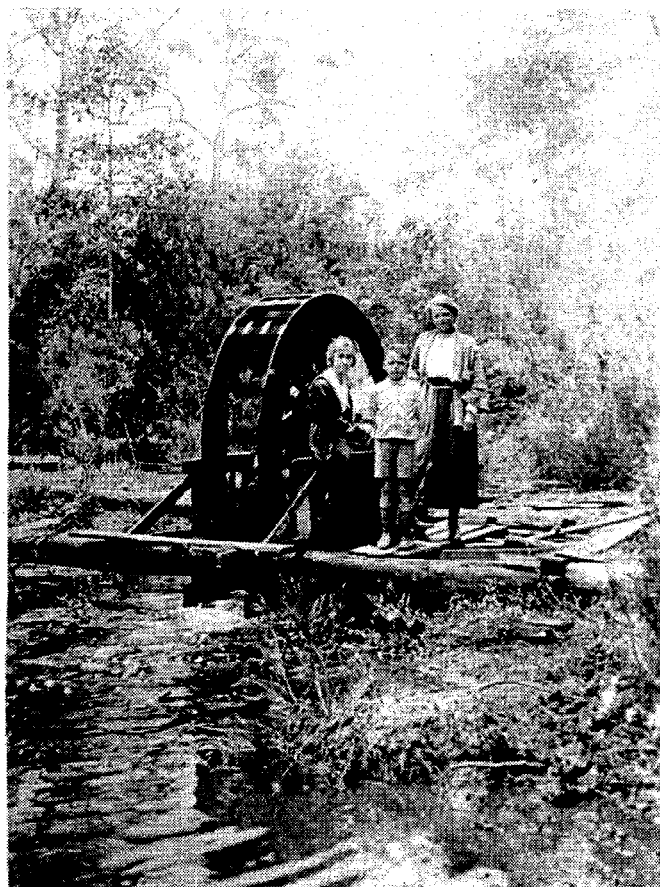
Which was how Alan King found there was a Nudist Colony in Guys Hill.

The regular maintenance of the grounds and buildings at the Colony was performed by local sign writer Timothy Pascoe-Web who lived in a somewhat dilapidated house nearby. On one occasion his wages had been overlooked for a fortnight, and rather than wait another week, and having to go to Gippsland, he decided to visit the secretary of the colony who was a baker in Sale.

As the baker was not at his work, Tim called at his home.

A rather stern faced lady opened the door, and asked what he wanted. "I've come for my wages", "What wages" she said. He replied "My wages for looking after the nudist club" Looking very sour she said "I know nothing of that" - and slammed the door.

*The sources ? Patricia and a local gentleman who also has clear recall but does not wish to be named ! Fire details from the C.F.A.*



Above: This waterwheel was built on the Cardinia Creek at Montuna in 1913, to help with irrigation of farmland. Photo courtesy of the Charles Wilson collection.

adidas Seafolly Brian Rochford

## Sizzling Swimwear

2yo - adult (up to size 22)

## Tennis

Racquets, Clothing, Footwear & Access

## Gym & Casual Wear

Quality Products, Competitive  
Prices Available Locally

## NOT JUST TENNIS

Shop 8, 27-33 Wood St. (PO Box 15)  
Beaconsfield 3807

**Tel: 9796 2767**

**Fax: 9796 2749**

adidas Seafolly Brian Rochford

## Ethel Mae & Co. COUNTRY HOMEWARES

SHOP 1, 26 WOOD STREET, BEACONSFIELD 3807

TELEPHONE: 9707 0392

We are stocked with  
a wide range of homewares  
and garden gear to delight all tastes.

- ❖ CHINA & GLASSWARE
- ❖ UNIQUE TIMBER FURNITURE
- ❖ HANDMADE DOLLS
- ❖ LEADLIGHT WORKS
- ❖ COUNTRY KEEPSAKES
- ❖ FAIRIES & FEEDERS FOR THE GARDEN

We strive to stock only quality products  
and support local artisans.

### TRADING HOURS

9AM - 5PM MONDAY TO FRIDAY  
10AM - 2PM SATURDAY



## SUEDOR BAORDING KENNELS AND CATTERY

Suedor Boarding Kennels & Cattery have been situated at 177 Holm Park Road, Beaconsfield since 1980 under the ownership of Charlie Doro, a local identity.

Charlie, before moving to Beaconsfield ran a cattery at East Malvern for 7 years and upon buying the existing business in Beaconsfield set about creating a rural environment for both cats and dogs.

The animals are housed individually, being exercised a minimum of

twice per day, with the dog enclosures overlooking a large dam and bush setting and the cats being able to sit by a large pond and fountain knowing that they are well cared for by Charlie.

After 29 years of caring for animals it is clear that Charlie's experience is a valuable asset to pet owners enabling them to confidently leave their animals in his capable hands. Suedor Boarding Kennels and Cattery offers personalised service, pick up and delivery and caring for your animal including any medical requirements. If required during the stay

Charlie will take your animal to its family vet.

Please take the time to come and see the facilities and the surrounds. Trust your pets to a person that lives on the property who clearly cares and loves animals.

Simply call Charlie Doro on 97071175 to make arrangements for an inspection or a booking.



## CARDINIA RANGES FARMERS' MARKET

*A taste of the country on  
the city's doorstep*

Saturday 12th October, Pakenham Racecourse, was the start of the Cardinia Ranges Farmers' Market. Markets are being held on the second Saturday of every month.

The Cardinia Ranges Farmers' Market will allow the community to showcase its diverse range of produce from fresh fruit and vegetables, to award winning wines and organic foods, as well as gourmet delights such as pestos, pickles, farmhouse cheeses and smoked meats.

It is anticipated that such a popular monthly event will not only attract a large following from within Cardinia Shire but also visitors from the wider metropolitan area.

Sophie O'Neil - 0359402597

# BEACONSFIELD HIRE

## PHONE 9707 0777

We have a wide range of equipment available including:

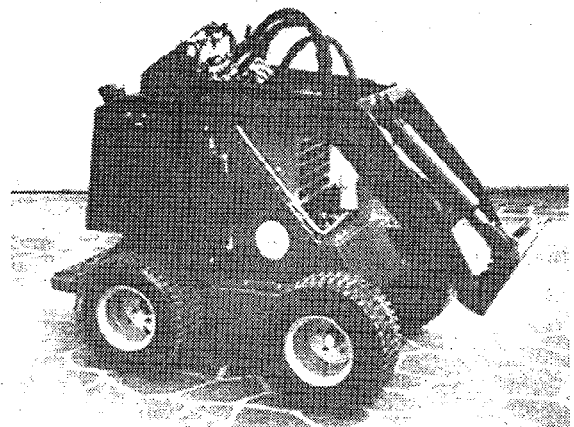
- Air compressors + tools
- Electric handtools
- Generators
- Industrial cleaning equipment
- Chainsaws
- Garden Tools
- Painting + welding equipment
- Concrete + brick equipment

**OPEN - Monday to Saturday 8am - 5pm**  
**Sundays 9am - 3pm**

Shop 3, 26 Wood St.,  
Beaconsfield 3807.

Email: [beaconsfield@bigpond.com](mailto:beaconsfield@bigpond.com)

**Do you need it?  
Why not hire it?**



Dingo Mini Digger



## OUR NATURAL WORLD

by Peter Hansen

Where has all the silence gone? The world before MCN (man created noise), was a vastly different place to the world we now know. Noise has taken over to the point where only by fleeing to the remote parts of our country, do we have any chance of finding that balm of the spirit; silence. Years ago in Melbourne, the Reverend Irving Benson wrote an article called, "A Saturday Reflection", in which he quoted an author standing in Bourke Street, during the 11 o'clock Armistice silence. As the Post Office clock struck 11, the sounds of the City died and quiet reigned. Then in the unaccustomed hush, from up among the eaves and cornices of the buildings, the songs of birds floated down. Only when all was silent, the feathered songsters that were

always there could be heard singing with their usual sweet cadences, as though they were still in forest glades.

A Biblical prophet who longed for divine reassurance failed to find it in the rumble of an earthquake, and the howling of the wind. Only when all was quiet did he detect the tones of the "still small voice", which is the communication of the Creator, the God of all nations. Thomas Keating once said, "Silence is the language God speaks, and everything else is a bad translation." Meister Eckhart's 13<sup>th</sup> century observation also fits; "Nothing in all creation is so like God as stillness." Oliver Wendell Holmes said of silence, "And silence like a poultice, comes to heal the blows of sound." William

Broome wrote of Ulysses, "He was the most eloquent and the most silent of men."

All of this means the same thing, the need of silence for our own good. Without it we can very quickly develop all sorts of personality and emotional disorders, taking away the calmness of spirit that gives our lives a foundation of control that we all seek. Some people are so seduced by this continual noise in our world, that they become destabilised when silence finds them. They are the people that cannot bear silence and will go to any lengths to avoid it. We all know them; Walkmans in the ears, T.V. never off, Computers a Religious ritual, Mobile 'phone overuse, and so on. They actually fear silence and can develop personality

disorders. The natural state of our world is one of silence; the temporary exceptions being wind, storms, and other natural events, but SILENCE is the normal state of our earth.

The rapid growth of Meditation in our Society is clearly an attempt to escape, albeit temporary, from the cacophony of noise that makes life intolerable at times. It is of interest the Meditation came from the Eastern Religions, or "The Brooding East", as it was once known. Brooding meaning silence.

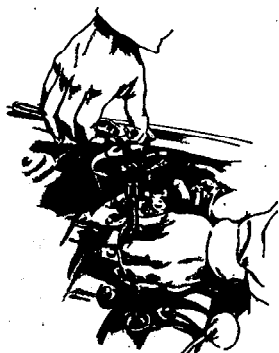
The secret of strength lies in the quiet mind. Not in the raucous prattle of the noise stunned mind of one who has no capacity for deep and meaningful discourse. An ancient Chinese saying goes thus, "An empty vessel makes the most sound." Also one could look at the oceans, and we know that the deeper one goes, the more profound the silence which creates philosophic thoughts in keeping with ones environment.

Our personal peace lies beneath all the turmoil and noise and clamour of the world. It is beneath feeling, beneath thought. It is found in the deep deep silence, and stillness of the soul.

### BEACIE SERVICE CENTRE

**SERVICING & MECHANICAL REPAIRS TO  
ALL TYPES OF VEHICLES INCLUDING:**

- \* 4x4 & Light Commercial
- \* Tune-Ups
- \* Brake & Clutch
- \* Front End Work
- \* Exhaust Systems
- \* Transmissions
- \* Motors



Licensed Roadworthy  
Tester



Lic Vic Roads  
Vehicle Tester

**MAJOR & MINOR WORK**

*- All Guaranteed -*

**9796 1401**

Contact Gary

**BEACIE SERVICE CENTRE**

122 PRINCES HIGHWAY BEACONSFIELD



## BEACONSFIELD'S HANDYMAN

by Phil Collins

In the last issue of the "Banner", I mentioned the car museum at Mulhouse, France where 400 cars dated 1878 to 1990 are displayed. I drafted this report from a seat in the cafeteria of that museum on an old envelope. I am gaping in wonder. If you find one car that you know is virtually priceless (like 20 million dollars) don't stop, there are maybe 3 or 8 of them in a line. There are 3 Bugatti Royales about 8 Bugatti Type 55 - probably the most beautiful sports car ever built.

I spent 2 full days wondering and wondering never hearing a word of English uttered - saying Bonjour with a smile at every pretty lady.

Mulhouse has a population of 120000 and reminds me of Geelong in that it has a huge car factory Peugeot. There is a busy rail station - I counted a freight train and then another of 39 trucks going out for a load of new Peugeots. A canal runs by with all manner of boats, cruisers, barges, yachts with masts lowered. Motorways crisscross the valley and people visit to sample the wines and the cuisine of the province of Alsace. I dined on cheese and fresh fruit and gazed in shop windows at the wonderful shoes and clothing priced beyond the reach of an Australian Handyman whose charges are so moderate.

Our exchange rate disadvantages us as tourist but maintains our standard of living here at home. En route Mulhouse to Paris Orly Airport then by mini bus Paris rail station Gard de Nord we drove some 20 km along a freeway with 80kph signs along each verge. I sat in the front as we

cruised at 140kph feeling a bit alarmed. No cameras?

Work has resumed with plans for the painting season to begin. If you need a handyman for those jobs you have not time to do, ring me.



Phil Collins  
**HANDYMAN**  
Berwick : 9707 4225  
• MAINTAIN • SECURE • IMPROVE  
*"Have tools will travel"*

This a paid advertisement

● GET FIT ●

*Sensational  
Special*

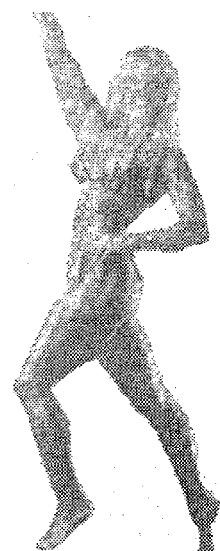
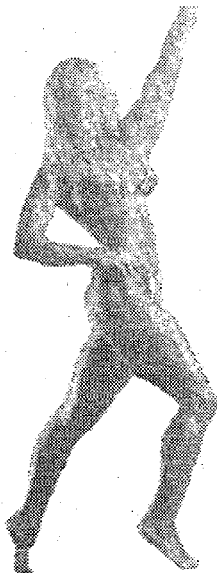
12 Months Full  
Membership

**\$395**

NEW EQUIPMENT  
NEW CIRCUIT

OPEN 7 DAYS

LOSE WEIGHT



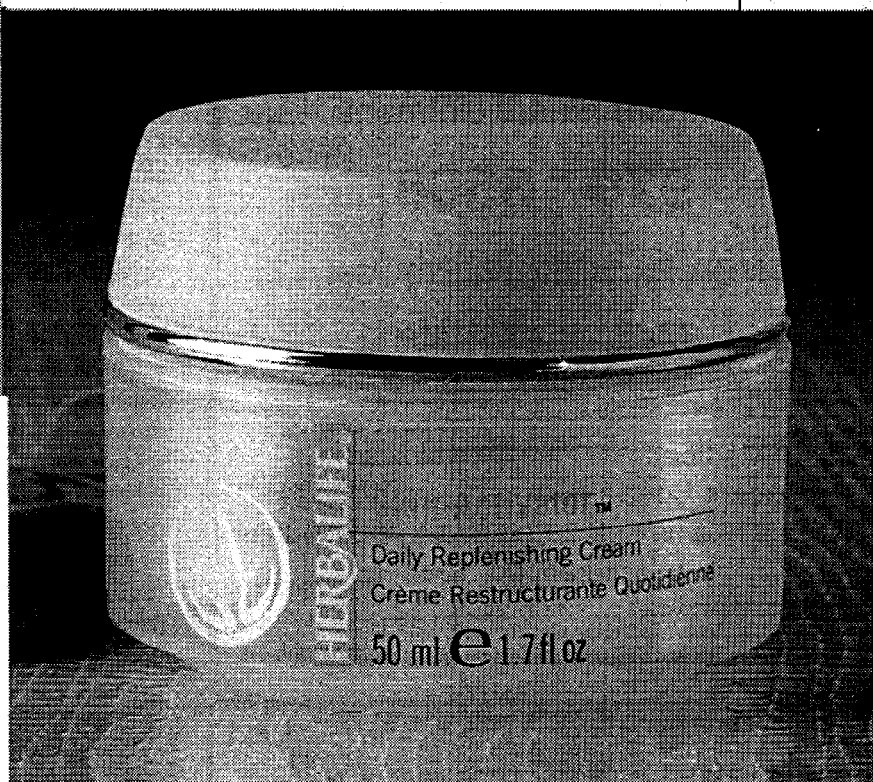
LOSE WEIGHT

**BEACONSFIELD SQUASH &  
FITNESS CENTRE - 9707 2929**  
29 Wood Street, Beaconsfield



# INTRODUCING

## NEW SKIN ACTIVATOR™ DAILY REPLENISHING CREAM



**WHAT** if you could reprogramme your skin to look, feel and act younger? What if you could see visible results in a matter of weeks? Now Herbalife brings the power of Active Nutrition to skin care with new Skin Activator advanced face cream that helps to nurture your skin. Used regularly it helps skin regain a smoother, firmer, more youthful appearance.

### A revolutionary approach to skin care

Many anti aging formulas that improve skin texture have irritating side effects. Skin Activator takes a unique approach that is powerful, yet gentle. Your collagen production naturally slows with age, resulting in a loss of skin firmness and tone, and the appearance of wrinkles. Skin Activator is formulated with glucosamine. Applied topically, glucosamine complex, over a period of weeks, helps support skin structure, helps improve skin tone and helps reduce the appearance of fine lines.

Independent clinical studies on the effects of the glucosamine complex in Skin Activator show:

- 33% reduction in fine lines and wrinkles after just four weeks, 57% after 12 weeks.
- 13% improvement in skin firmness after four weeks, 55% after 12 weeks.
- Improvement in skin surface texture of 34% in four weeks, 45% in 12 weeks.
- Skin moisture content improved by 44% in four weeks.

### Dynamic Skin Boosting Botanicals

In addition to glucosamine complex, Skin Activator contains two other powerful skin improving ingredients. Green tea antioxidants help protect your skin from free radical damage that can cause it to age prematurely. Skin softening almond oil helps increase moisture levels and suppleness.

This rich, yet light formula has a delightful green tea fragrance. It penetrates quickly and is ideal for morning and evening application. After cleansing and toning, apply Skin Activator over face and neck and follow with your moisturiser (containing SPF for daytime.)

**Only**  
**\$69.95**

For **FREE DELIVERY** and to  
place an order contact  
**Josephine**  
**Tel: (03) 9517 - 7739**  
**Mob: 0421 551 888**  
**Your Independent Herbalife Distributor**

## DR PANJKOV & ASSOC. DENTAL CLINIC

Unit 4/87 Wood Street  
Beaconsfield 3807

Looking for a caring, gentle dentist for  
your family

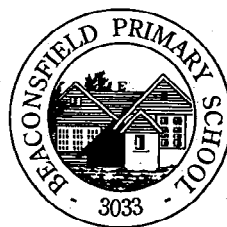
Ring for an appointment

**9707 3508**

HBA Participating Provider

Medibank Private  
Members Choice Dental Plan

Medibank Private Dental Extras  
(except Special Extras) are entitled to  
2 free exams and 2 free scale and cleans  
per patient per year.



## BPS Corner

### What's Happening at Beaconsfield Primary School.

#### SEE HOW WE GROW!

We had 10 new children start with us this term which brings our total enrollments to 410. Our children have a great attitude to our constant growth, actively seeking out new friendships and making the children feel welcome. New children and their parents are often surprised at how quickly they are accepted into our school community. This steady intake of students enables us to grow gracefully, as we are able to plan for the future. It is for this reason that we ask people to enrol their children early, so that we

have adequate staff and resources to be able to do a job effectively.

If you intend to send your children to Beaconsfield Primary School next year, but have not enrolled, we welcome you to come into the office as soon as possible.

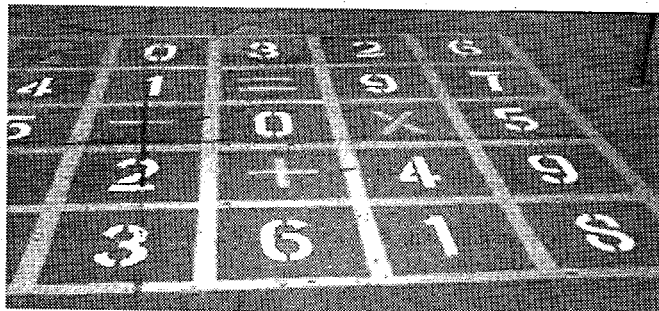
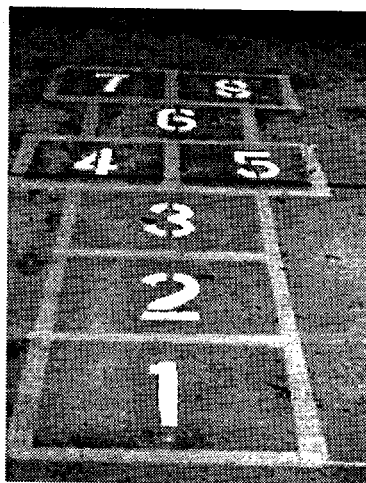
#### SHOWCASING

##### B.P.S. IN HOBART.

During the September school holidays Andrea Hillbrick (Assistant Principal) presented at the National Mathematics Forum about the success of our school's numeracy program. Educators across all states were very interested in our school program. Andrea was proud to share the work of the teachers and students of Beaconsfield Primary School.

#### AFTER THE WORK IS DONE ITS OUT TO PLAY!

Children were delighted to see that games like hopscotch, four squares, maths boards and many more had been painted onto the asphalt/concrete areas to use during playtimes.



*From a fine tradition to an exciting future.*



## House Call Vet

**Dr. John Stewart**

BVSc (Hons) MRCVS

**Veterinary Surgeon**  
available to attend your  
**dogs, cats and horses**  
at your home.

Phone: 0418 525 002

0500 525 003

Email: [johnstewart@bigpond.com](mailto:johnstewart@bigpond.com).

# Amanda's Beauty Care

*The ultimate in beauty – our aim is to pamper*

8/16 Princes Highway, Beaconsfield. Vic.3807. Phone 9768 9772



**WHY BE WHITE IN WINTER ?  
GREAT SPECIAL ONLY \$100.**

Stand up 12 min solarium, no sweating, no discomfort, no uneven tanning by Verticle tanning.

- ◆ Diamond Dermabrasion (as seen on A Current Affair and Good Medicine)
- ◆ Acne scarring, stretch marks, the ultimate in facials
- ◆ Vibra Saun (sports injuries)
- ◆ Slimtone
- ◆ Weight Loss
- ◆ Solarium (12 min stand up)
- ◆ All types of Artificial Nails
- ◆ Non Surgical Facelift
- ◆ Sea Clay Body Wrap
- ◆ Detoxation
- ◆ Lymphatic Drainage
- ◆ All types of Waxing (XXX)

ASK ABOUT OUR WINONA SKIN CARE (ALL NATURAL) PRODUCTS



**BODY WRAPS – Many Types**

Tone Up Detox Weight Loss Great Results



## DIAMOND DERMABRASION

Results are tremendous. Our Clients have been truly amazed at the results with Dermabrasion. This treatment is completely painless, no reddening, chemical free, completely organic, no harsh salts, no scratching and clients can return to work immediately. Salon results. No 1 in acne proven to clear, fine lines soften, enlarged pores disappear, blackhead gone, facial tanning enhanced, keloid scarring is minimal, acne scarring gone, rejuvenation guaranteed. You will be surprised at the results.

## EYELIFT

Do you have dark circles, tired eyes, heavy eyelids? This non surgical treatment which includes a eyebrow lift can help. *Great results.* **Cost - \$30** Normally \$50.

## XXX and BRAZILLIAN WAXING

Male and Female. Professional and Discreet.

RING FOR PRICES AND BOOKINGS.

**9768 9772**



## GREAT DEALS

ON ALL YOUR HOME IMPROVEMENT NEEDS



- ★ Redgum Sleepers
- ★ Western Red Cedar W'boards.
- ★ Baltic Pine W'boards.
- ★ Jarrah & Karri Flooring.
- ★ Canadian Oregon
- ★ Treated Pine Boards & Posts.
- ★ Large Range of External & Internal Doors.
- ★ Timber Decking (various species)

DELIVERIES TO  
ALL AREAS DAILY

*So for Friendly & Efficient Service Call in  
and See the Boys at*

**VAN STEENSEL TIMBERS PTY. LTD.**

LOT 1, PRINCES HIGHWAY, OFFICER 3809

or phone

**5943 2371**

Fax: (03) 5943 2284



## BEACONSFIELD CRICKET CLUB

by Joe McMaster, President

Put away your Footy gear, spring is in the air, the magpies are swooping and the Cricket season has started.

The season hit off on October 5th and the Juniors on October 12th.

Rick Colling has been appointed coach of the senior grades, Rick lives locally and his experience in the sport includes five years playing at St Kilda, 14 years on turf at Coomoora & Hallam, a year as captain-coach at Karingal, and a season playing for Sevenoaks in the Kent league, England. Rick has also captained the DDCA representative team. The club looks forward to improving under Rick's guidance and learning from his vast experience in the game.

The Club will field 5 senior teams A,B,C,E,F and all of the younger players will be given every opportunity to perform at the highest level. Training is held Tuesday and Thursday nights.

We also run a team in the DDCA Masters competition this is for players who are over 35, we play one Sunday a month 6 games all on turf-wickets, if you are interested in playing call Joe McMaster ph 9796 1940.

The Juniors have started training, we will run two under 12's teams they play on Friday nights and training is on Wednesday nights at 4:30 to 6:00pm the two coaches are Ross Mitchell and John Martin.

The under 14 team will be coached by Alan Sauvarin and Joe McMaster.

The under 16 team will be coached by Russell Vincent training is held Monday nights at 4.30pm players are needed and there is an opportunity for players with ability to play senior cricket in the afternoons. For further details call Alan Sauvarin ph 9704 8931.

Local businesses are also invited to associate themselves with the club and benefit from its focus on the community by becoming sponsors. Benefits are negotiable, and sponsorship offers "in kind" are also more than welcome. The club encourages its members to support those who support the club, and can provide naming rights and other sponsorship options. For details contact Andrew Mercier on 9702 2350.

We have continued to improve our facility and a new fully automatic sprinkler system has just been installed and the Bar has been fully renovated. We play on three local grounds, the main Beaconsfield ground, St Francis Xavier College, and Akoonah Park.

We are a family based club, new players are always welcome. Players of all ages and levels are invited to come down for a game. The Club hopes to provide an enjoyable atmosphere and competitive cricket for the community of Beaconsfield and offer something for all members.

Joe Mc Master, AH 9796 1940.



**K.B. TRANSMISSIONS**

Automatic Transmission

Specialists

31 ENTERPRISE AVENUE.

BERWICK, 3806

**K.B. TRANSMISSIONS**

*Automatic Transmission Specialists*

**31 ENTERPRISE AVE.,  
BERWICK**

**PHONE 9707 3864**





# BEACONSFIELD TENNIS CLUB NEWS

by Margaret Chatfield

Winters over and winter competition, Saturday Junior and Seniors have finished with some very pleasing results. Another pleasing area of the club is the ground upgrading with creative pathways, shrub and lawn sown.

## SATURDAY JUNIORS

Sections 5, 8, 9, 10, 11, 15, 16, 17, 19 Gold, 19 Blue and 20 successfully made the finals. Preliminary finalists Sections:- 5, 9, 11, 16, 17, 19 G and 20. Grand Finalists were Sections 9, 10, 11, 15, 16, 17. Results as follows:-

Section 10 Premiers, team members :- Kelly Godden, Matthew Manning, Trent Maillard, Richard Mein, John Crozier.

Section 11 Premiers, team members:- Daniel Shinnars, Liam Doherty, Teagan Proctor, Peter Sofra, David Richards.

Section 15 Premier, team members:- Tamara Mollison, Vaughn Owen, James Akers, Scott Stanley and Steven Young.

Section 16 Premiers, team members :- Lachlan Anastasi, Dylan Meno, Harley Crozier, Grant Hobden and Joshua Vincent.

Section 9 Runners Up, team members:- Josh Osborne, Jessica Powell, Damien Hannon, Montana Grenfell and Harley Osborne.

Section 17 Runners Up, team members:- Jake Winkler-Kmet, Jess Lispet, Mishell Reid, Meera

Chandrananth and Anthony Potter.

Summer season hits off with 24 teams – have a great season.

Enquiries for Juniors contact Lynne Day on 9707 4662 or Margaret Chatfield 9707 2016

## SATURDAY SENIORS WDTA

Ladies B1 Special "premiers" for the third successive season. Quite a feat for team members: Lynne Day, Dae Holgren, Judy Fox-Smith, Dawn Snelson, Karen Lanson and Anne Phillips.

## NIGHT COMPETITION

Mens A/B Single /Doubles Finals Results

'A' Grade Winners 'Top Guns' defeated Runner Up 'Chimps' 26/12

Top Gun members:- Bruce Odcers, Dave Van Den Kough, Theo Van Roy.

'B' Grade Winners 'Slap Shots' defeated Runners Up 'Knight Stackers' 33/26.

Team members: Graham Howard, David Bell, James Dickson, Murray Castle.

Enquiries for Thursday Night Mens to Ian Craig on 9707 4507.

Tuesday Night Unisex. Final Results.

Winners - Mark Daldy, Alan Anile, Denise Anile, Karen Daldy.

Runner Up - Lisa Kirkham, Lawle Kregting, Michelle Bailey and Tim McDougall.

Tuesday Night enquiries to Margaret Chatfield on 9707 2016.

## COURT HIRE

Court Hire enquiries to Margaret Chatfield on 9707 2016

## SOCIAL FUNCTION

Our Annual Clover Cottage Dinner was a fun filled evening. During the evening whilst enjoying a superb dinner presentations were made to Midweek Ladies and Saturday Senior Premiers teams, a raffle with a great range of prizes and a mini auction called by Les Donaldson was a highlight of the night. Also during the evening Honorary acknowledgements were presented to Life Members Heather Saunders, Wes Jame, Dawn Snelson and Margaret Chatfield. Jim Peart travelled from Seymour to acknowledge the Peart trophy recipients Pat Schelling and Ian Craig.

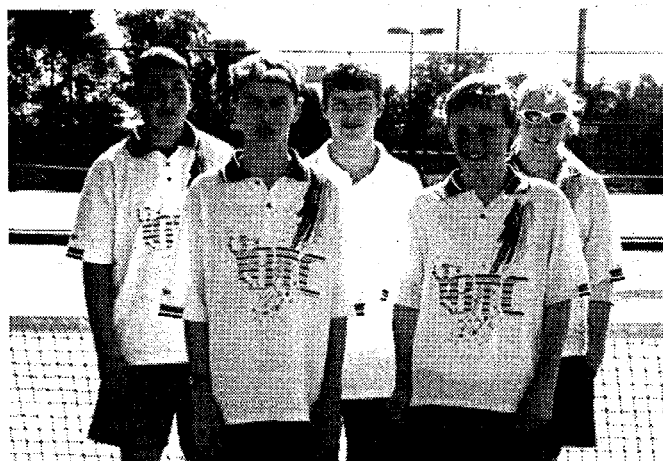
The Club would like to thank our local community and friends for the generous support. Please

support our local community in the near future.

## DONATIONS

Acknowledgements to Hair Movement, Charcoal Chicken Plus, Not Just Tennis, Beaconsfield Family Video, Beaconsfield Newsagency & Milkbar, Amanda's Beauty, Keogh's Pharmacy, Beaconsfield Swim School. Ethel Mae's & Co Country Homeware, Robert Gordon Pottery, Massage in a Box, Head Tennis Racquet Maurie Tennis. Lynne & Arthur Thorpe Nursery, Nutrimetics Gift Handbag, Berwick Travel, Jade Princess, Taco Bills, Lorraine Hendy Garden Products, Cross Stitch hand towels Joan McPherson.

News Flash – Good News. Courts 7 and 8 have night lights connected. Also courts 5 and 6 upgrading will be carried out in December.



Junior Section 10 Premiers – Back L to R – Richard Mein, Trent Maillard, Kelly Godden.

Front row L to R – John Crozier and Matthew Manning

## FOR SALE

**ALPACAS.** Pregnant females, priced from \$3,300, at Acacia Rise Alpaca Farm.

Breeders of Beautiful Black.



For further information contact Kaye Chapman, 9707 5589.

**FOWLERS VACOLA BOTTLING JARS** assorted sizes, \$1.00 each. Fowlers Vacola electric sterilising unit \$50.00. Ross 9707 2244.

## SITUATIONS VACANT

**SPACE AGE ELECTRONICS** requires homeworkers for the assembly and soldering of Printed Circuit Boards.

Persons with experience should ring Steve on 9707-2147 during working hours 9 - 4pm.



## POSITION WANTED

**GRAN** seeks position in your home. Family support - baby sitting, child minding, adult companion and or carer. 25+yrs experience including Special needs - no heavy lifting. Avail. day or night. Reasonable rates, references & Police check. Phone 9702 5075.

**IRONING LADY** to do your ironing. You may drop off by 8am or earlier and pick up after 5pm same day. Negotiable rates. Phone 9707 5971.

## INFORMATION FOR COUNTRY MUSIC FANS

Berwick and District Folk Club are holding a **JAM SESSION** on 27th October. If you are interested in getting together for this session contact Edward on 9702 1223.

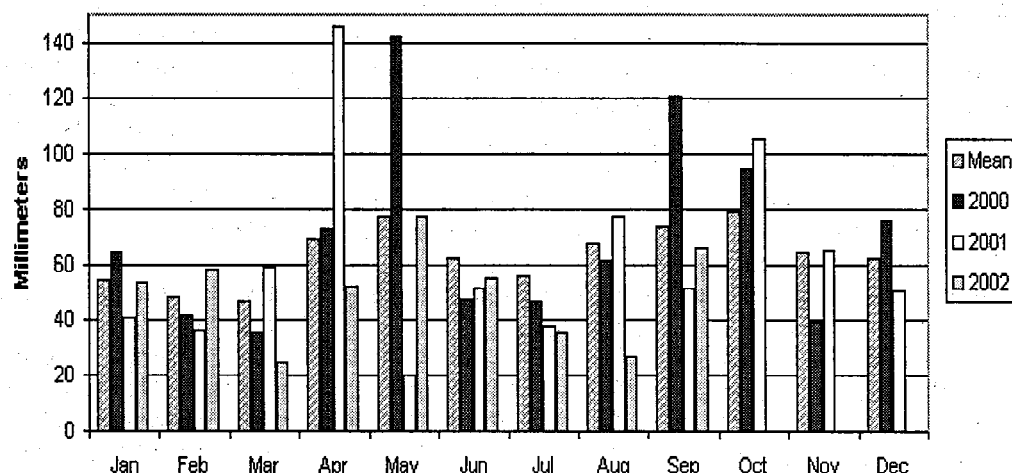
Interstate Country and Western performer, **Paul McCloud** will be in concert at Emerald Hall on 16th November at 2pm. Contact FM97 on 59682727 on Friday night 7-9pm or Saturday morning 4-8am for details. You can also have your country/irish music requests played.

**RED HILL COUNTRY AND MUSIC FESTIVAL & TRUCKSHOW.** Sunday 12th January, 2003. 10 - 6pm. Hoe-down on Saturday night. For information contact President Bruce Moser, 5986 2834.

**BUNYIP COUNTRY MUSIC FESTIVAL** - in February 2003



## BEACONSFIELD RAINFALL



## BEACONSFIELD BANNER ADVERTISING RATES

Banner Advertising Rates GST Inclusive.  
Prepaid discount applies, if paid prior to publication.

Advert Size	Per Issue	Prepaid Per Issue
Full Page	\$99.00	\$90.00
Half Page	\$60.50	\$55.00
Quarter Page	\$33.00	\$30.00
Notice Board	\$13.75	\$12.50

Classified: Min \$3 for 5 words + \$1 for each 5 words thereafter plus GST

If you wish to advertise in the Beaconsfield Banner contact Willem Boon 9707 5053

## BANNER DELIVERY

For those people who are interested in receiving the Banner by post this can be arranged for a pre-paid cost of \$6. per year.

Please send name, address to:  
Treasurer,  
Beaconsfield Progress Association,  
P.O. Box 217.  
Beaconsfield.  
3807



## DISCLAIMER

Whilst every care has been taken in preparing this newsletter there may be something that has been overlooked or printed incorrectly. Please give us a call if articles or adverts do not appear as you intended.

Some articles and photo's are covered by copyright. Please have the courtesy of contacting us if you wish to copy any part of the Banner.



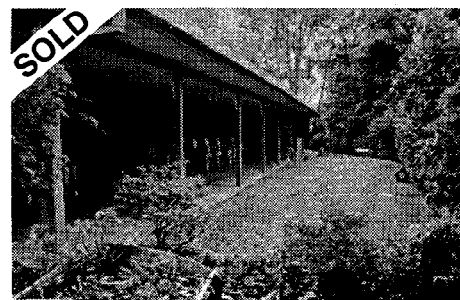
**PEARCEDALE -**  
**50 Sq DUAL HOME ON 7½ ACRES**



**NARRE WARREN SOUTH - 3 BEDROOM PLUS STUDY**



**BERWICK -**  
**3 BEDROOM NEAR NEW HOME**



**BEAONSFIELD -**  
**LARGE HOME ON 2 + ACRES**



**BEAONSFIELD -**  
**4 BEDROOM PLUS STUDY**



**LOCH - 4 BEDROOM + STUDY AUSTRALIAN HOMESTEAD**  
**ON 5 ACRES**



**CLYDE / FIVE WAYS - PRESTIGIOUS HOME ON 7**  
**ACRES**

**DUE TO HIGH DEMAND  
 FOR PROPERTY IN THIS  
 AREA WE WOULD LIKE  
 TO OFFER YOU THIS  
 SPECIAL OFFER**

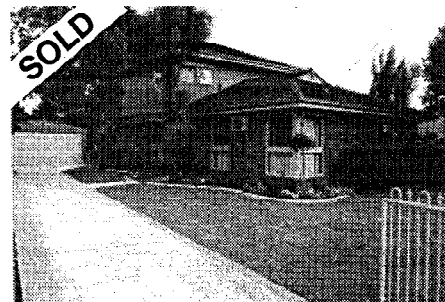
**WE NOW OFFER OUR CLIENTS:**

- \* A FREE VENDORS STATEMENT
- \* A FREE SPECIALLY WRITTEN SIGN BOARD, INDIVIDUAL TO YOUR PROPERTY
- \* FREE ADVERTISING IN REAL ESTATE NEWSPAPERS
- \* FREE INTERNET ADVERTISING ON OUR OWN SITE
- \* FREE COLOUR WINDOW AND BROCHURE DISPLAYS OF YOUR PROPERTY IN OUR OFFICE.

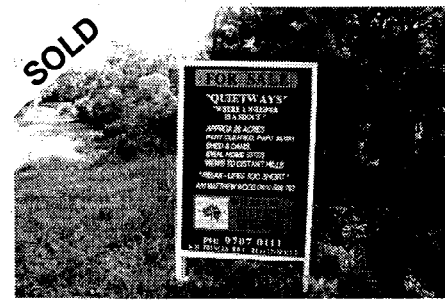
**ALL THIS AND NO SALE NO CHARGE**

FOR FREE MARKET APPRAISAL OF  
 YOUR PROPERTY PLEASE CONTACT  
 OUR OFFICE.

**WE ARE DESPERATE FOR  
 MORE PROPERTIES  
 IN THIS AREA!!**



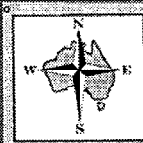
**BEAONSFIELD - FAMILY HOME**  
**4 BEDROOM PLUS STUDY**



**UPPER BEAONSFIELD - 20 ACRES**  
**IDEAL HOME SITE**



**TOORADIN - 191 ACRES AND**  
**COTTAGE HOME**



**WILLIAM  
 STEVENS (AUST)**  
**ESTATE AGENTS  
 AUCTIONEERS**

Internet: [www.realestateweekly.com.au](http://www.realestateweekly.com.au)

**9707 0111**

**6-10 PRINCES HIGHWAY  
 BEAONSFIELD**

[www.williamstevens.com.au](http://www.williamstevens.com.au) - for more properties

# FAMILY VIDEO LAND

**COMING  
SOON**

Shop 1/70 Princes Hwy.  
(Cnr. Souter St.) Beaconsfield

**9796 1041**

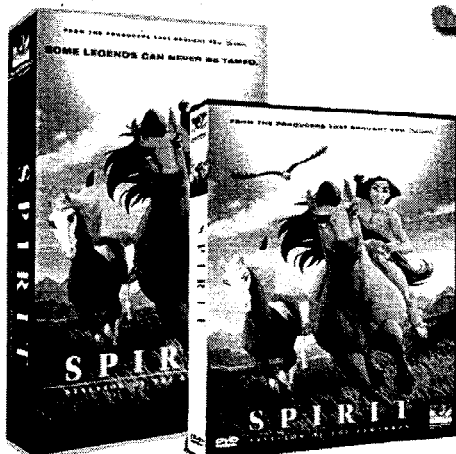
12noon - 9pm  
7 DAYS A WEEK

**THE TIME MACHINE**

To End All Wars



Anne Rice's  
**QUEEN OF THE DAMNED**  
ALL SHE WANTS IS HELL ON EARTH



**JOHN Q.  
PANIC ROOM  
CHARLOTTE GRAY**

**BLADE**

**SPIDER-MAN**

# MEN IN BLACK II

**VIDEO AND DVD SPECIALS**

MONDAY TO WEDNESDAY - ALL OVERNIGHTS - 1/2 PRICE EXCLUDING PUBLIC HOLIDAYS

THURSDAY TO SUNDAY - PLUS PUBLIC HOLIDAYS -

1 OVERNIGHT + 3 WEEKLIES FOR ONLY \$10.

WEEKLY SPECIAL'S 5 for \$5.50, 7 for \$7.70 or 10 for \$11.00