

Beaconsfield Banner

Vol. 12 No. 1 Bimonthly Publication of the Beaconsfield Progress Association Inc. February / March 2000

ARTICLES FOR THE BANNER TO GO TO GLORRAINE HARDY 9796 1361, MARGARET BOON 9707 5053 OR BOX IN POST OFFICE
ADVERTISING CO-ORDINATOR WILLEM BOON 9707 5053 BANNER POSTAL ADDRESS PO. BOX 217 BEACONSFIELD 3807
EMAIL ADDRESS FOR THE BANNER IS banner@beaconsfield.org.au



**WINE
AND FOOD**
PAGE 13



**INDIAN
RESTAURANT**
PAGE 14



**GOODS AND
SERVICES TAX**
PAGE 8



**HISTORICAL
BEACONSFIELD**
PAGE 12



*Photo by Paul Cohen
Photo by Paul Cohen*

Ashlen Batt-Ludekens has a final farewell hug for her mum Cheryl, before starting her first day at Beaconsfield Primary School.

NEW COMMUNITY FACILITY FOR BEACONSFIELD DEPENDENT ON GRANT FROM COMMUNITY SUPPORT FUND

A new community facility for Beaconsfield is now a step closer after the Beaconsfield Progress Association's public meeting on 18th January.

Mr. Don Welsh, C.E.O. Cardinia Shire Council, Crs. Ted Owen and Graeme Kidd and the Member for Eumemmerring Gordon Rich-Phillips attended the meeting.

After the President, Joy Bishop gave a short history of the old public hall, and community facilities in Beaconsfield, Cr. Graeme Kidd announced that Council had appointed a consultant to prepare a submission to the Community Support Fund, for funding. He went on to say that a committee representing groups in the community would be formed to put forward the views of the local people. The time frame will be tight, but achievable, and the group will be formed by the end of January with the plans being completed for public comment by May and the submission being lodged by the deadline of 30th June, 2000.

PUBLIC TOILET FOR BEACONSFIELD

Mr. Don Welsh C.E.O. Shire of Cardinia announced at the recent public meeting of the Beaconsfield Progress Association Inc. that the Council was planning to build a new "Exeloo" in Beaconsfield. The proposed location is to be in front of the shops near the corner of Wood Street, and necessitates the Council redesigning the bus lane, bus shelter and garden bed near the War Memorial. Proposed plans for this will be available at the next Progress Association meeting (see notice)

Mr. Welsh spoke about the need for Council to make sure that council funds were well spent and that maintenance costs were minimized. Referring to a new report "Facing the Renewal Challenge" Mr. Welsh quoted the Minister for Local Government, Mr. Bob

Cameron "This report highlights the need for Victorian Councils to improve asset management practices and to ensure that adequate planning takes place for maintenance of the State's infrastructure over the next 30 years".

The "exeloo" is a different concept, it is a "unisex" model which self cleans, is bright, light and spacious, and is designed to deter undesirable loiterers and consequently has to be placed in an "up front" position. It's self cleaning ability greatly reduces council's cleaning costs. (see further article)

Mr. Welsh went on to say that the exterior appearance did not have to be just a "box" and said the Council planned an attractive building with landscaping and showed those present some pictures of attractive possibilities.

Inside of an EXELOO

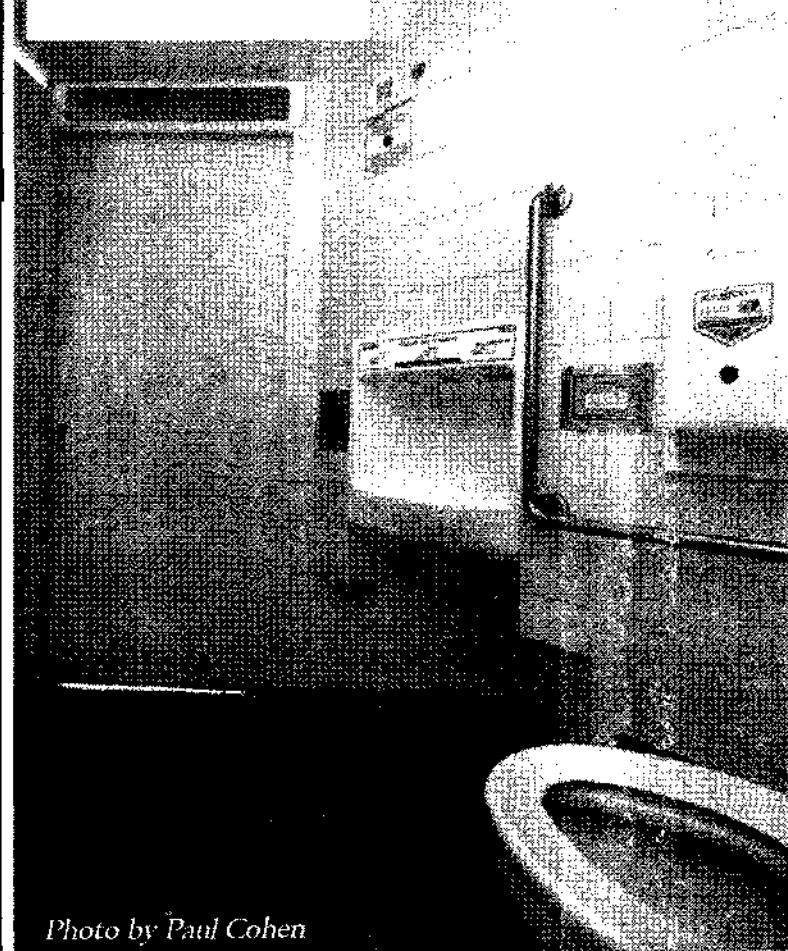


Photo by Paul Cohen

BEACONSFIELD PROGRESS ASSOCIATION PUBLIC MEETING

7.30P.M. TUESDAY 15TH FEBRUARY, 2000
COMMUNITY CENTRE, BEACONSFIELD AVE.
BEACONSFIELD

Come along to hear and see: -

- * The report and plans for our new toilet.
- * The beautification plans for the median strip - eastern end of Beaconsfield.

* A report from our delegate to the Community Facility steering committee

Plus

Other issues effecting our community

All welcome

Call Tony 9707 1765 or Joy 9707 3981 for details or transport.

ANZAC DAY SERVICE

The annual Anzac Day service will be held at the Beaconsfield Cenotaph on Sunday 23rd. of April commencing at 2.00pm.



Photo by Paul Cohen

Pastor Gary Piper who will conduct the service.

For all outdoor
needs from tractors,
mowers, chainsaws,
brushcutters,
pumps, etc.



Spares, Repairs & Service

Contact Peter Willis

Beaconsfield Mower & Tractor Centre

114 - 120 Old Princes Hwy.
Beaconsfield.

9707 5368



BEAconsfield AUTO ELECTRICS



3/94 Princes Hwy Beaconsfield
Telephone: 9796 1550

MOBILE 0409 009 919 FAX 9768 9585

★ Change Over Starter Motors & Alternators

★ Ultrasonic Injection Cleaning

★ E.F.I. Tuning & Repairs ★ Batteries

★ Headlight Alignments ★ Tune - Ups

★ Onsite Service Calls ★ Full Re-wiring

AIR
CONDITIONING
SERVICE &
INSTALLATION



NOTES FROM COUNCIL

By Cr Graeme Kidd
5944 3235



Cr Graeme Kidd
BEAconsfield
HALL

The working group set up by the Beaconsfield Progress Association to look at the hall issue, which included myself and Miriam Gillespie from the Shire, had made some progress towards defining requirements for a community facility or facilities for Beaconsfield as reported in the last Banner.

However there were clearly concerns within the Beaconsfield Progress Association with the

direction taken by that group, particularly an emphasis on the early redevelopment of the existing community centre into a multi-purpose centre to meet the immediate needs of a range of community groups, with a more extensive "hall" being developed over a longer period.

Council recognises the need to establish as early as possible appropriate community facilities in Beaconsfield recognising the limited facilities now available and the substantial future growth in the township. Accordingly Council has asked Vivien Clark, an experienced consultant in community service development, to undertake a study to define the requirements for a major community facility in Beaconsfield taking into account immediate and longer-term requirements.

Cont. on page 5.

CONTENTS

Starting School	1	Public Hall history	11
Public meeting	1	Historical Beaconsfield	12
New Community Facility	1	Wine & Food	13
Public Toilet	1	Indian Restaurant	14
ANZAC Day	1	Goodyear-New Management	15
Notes from Council	2	The Sinclairs	15
President's Report	3	Coffee & Dessert Evening	15
Any Suggestions	3	Summer Gardening	16
Letter to President	4	Library Opening Times	16
Beac Community Centre	6	A New Year	17
Make & Mingle	6	Notice Board	18
Video Vibes	7	Do Drugs Make You Feel Better	21
GST	8	Roses & Thorns	22
Our Natural World	9	Position Wanted	22
Beaconsfield Handyman	10	For Sale	22

PROGRESS ASSOCIATION MEETING DATES

Tues. 15th. February, Tues. 21st March, Tues. 18th April.

FACTORY DIRECT

Security Doors



ALSO
AVAILABLE
* tuff mesh
* one way
vision mesh

Wardrobe Doors

Vinyl &
Mirror
Sliding
Doors



Shower Screens



* Sliding Door
* Pivot Door
* Repairs &
Reglaze

Pool & Garden Fencing



* Many designs
* Full colour range
* Meet Aust. Standards
1926 & 2820

Vertical Blinds Holland Blinds Slimline Blinds



PAKENHAM DOORS & SCREENS

SHOWROOM/FACTORY
2-1 Purton Rd, Pakenham

Phone: 5940 2225

Mob: 0418 398 319

PRESIDENT'S REPORT

From the President of the B.P.A. Joy Bishop



The New Year is with us and the dreaded Y2K bug does not appear to have struck in Beaconsfield.

We rounded off last year with the Carols by the Creek in the Bob Burgess Reserve. This event was run by the Baptist Church on behalf of the Community. Although the evening was quite cool it was very well attended. The entertainment provided was of a very high standard and everyone present enjoyed the evening, particularly the children. The lights from the candles gave a very pretty effect and the compare, Sean McMahon, kept everything flowing beautifully.

Our January meeting was very well attended, over 50 keen and enthusiastic people in support of a new Community Facility and a Public Toilet. (See separate articles)

"EXELOO" UNISEX TOILET

The unisex self cleaning toilet is a new concept to most of us, but we at the Progress Association have been "checking them out" (what fun!!) and find that all the people we have spoken to have found them to be at least satisfactory and most consider them excellent. I

got a glowing report from traders in Richmond who say their customers love it, as it is clean, bright and safe. They said that at first they were skeptical but found it has none of the downsides of normal public toilets such as smell, wet, dirt, vandalism and undesirables hanging around. They are programmed to lock up and unlock at pre-determined times so that it does not have to be manually locked at night and opened in the morning.

We hope that the council comes up with a good design and location. This will be displayed at our next meeting so don't forget to come along and have your say (see notice of meeting).

COMMUNITY FACILITY

As a result of our earlier petition we now seem to be making some progress on this facility, although it all hinges on getting funding from the Community Support Fund. We have high hopes of this coming through as Gordon Rich-Phillips, Member for Fumemmering was at the meeting and offered his support. We should have some ideas on design and location for our next meeting.

Thank you to all of you who came to our last meeting, please continue to support us and working together we will get improvements for our town.

HAVE YOU ANY SUGGESTIONS

Have you taken a trip to Pakenham or Narre Warren and seen the new library complexes there? Libraries are now up to the minute new technology information centres with computers and free access to the internet and lessons on how to, if you don't know how.

Not only are there lots of beautiful new books on every subject imaginable, but also the latest magazines, videos, CD'S and CD ROMS. All this information can be borrowed for free, because we have paid for it with our rates and taxes.

As Beaconsfield is planning a new community centre and hall we could incorporate such a library in our town's complex. The library at Narre Warren has a meeting room as well in the building, which is used by community groups. The Pakenham Library also has a room for the local historical society.

Did you realise most towns in Cardinia, which do not have a library complex, have the Mobile Library with all these up-to-date facilities come 1/2 day each week. Beaconsfield is missing out. If we cannot travel to Pakenham or Narre Warren we cannot access all these fabulous resources. Our children are also missing out.

Would you like to see the Mobile Library visit our town each week and then have our own Library incorporated into community facilities/ hall complex?

Why not contact Beaconsfield Progress Association and your Councillors with your ideas? Ann Taylor.



**Akoonah
Park
BERWICK**

**Produce, Trash &
Variety Market**

EVERY SUNDAY

Opens 8.30am. to 1.30pm.

Family Market
Free entry

Phone Bookings on
9796 1455

Keogh's Pharmacy
OPEN 7 DAYS A WEEK

Mon. - Fri. 9am. - 9pm.
Sat, Sun. 9am. - 6pm.
Public Hol. 9am. - 2pm.

Public Fax Service 9796 1645
for
HOME DELIVERY
9707 5187

Agent for:
MEDIBANK PRIVATE
A.N.A.
LATROBE
YARDLEY COSMETICS
CONSTANCE CARROL
AUSTRALIS
FRENCH PERFUMES

Invalid Equipment for Hire
or Sale.
Ear Piercing
Pregnancy Testing
Photocopy Facilities
Fax Facilities

Agent for: KODAK
24 exp film \$7.95

Reprints 1/2 Price for 10 or more
1/2 price Enlargements : 20 x 25cm

Shop 2/16 - 24 Princes Highway
BEAconsfield



LETTER TO THE PRESIDENT

Mrs. Joy Bishop,
President Beaconsfield Progress Association

Dear Mrs. Bishop,

We are writing with a number of suggestions for our town; Firstly we are pleased that at last we are getting toilets in the town. May we suggest that the toilets be placed near the shops, near the road. We suggest near the bus shelter in front of the chemist or at the end of memorial park in front of the kinder. Please do not allow the toilets to be put in Bob Burgess Park. Firstly far more people use the shops than the park, children often need the toilet when out shopping with parents. Thankfully Mr. Keogh allowed our children to use his toilet when they were young. Also people using the Post Office and at the bus stop.

If the toilets are in the park, it's a long walk from the shops - it's a difficult walk for older people and most importantly we will have problems with undesirables hanging around the toilets in that secluded park. Berwick regularly warns people against using the toilets in Buchanan Park (Clyde Road). It's a lovely park with BBQ, play equipment and a pond, but the toilets are at the back facing into trees and a number of people have been attacked when using them. Let's take a lesson from our neighbours. We will also have problems with syringes, so please can we make these toilets as safe as possible.

May we also request that a disabled toilet be included in the plan and that it must be separate from the ladies and gents, but still in the same building. The reason is that we have a girlfriend with MS and she needs to be helped in the toilet. If she is out with her husband he can't take her to the disabled toilet in Berwick in High Street as it is in the ladies section.

Our other concern is the lack of library facilities in Beaconsfield. We had the Mobile Library every second Tuesday morning a few years ago, but now nothing. As ratepayers we are entitled to a convenient library service and many people are unable to travel to Pakenham or Narre Warren. Public libraries these days have computers, CD ROMS, videos, internet facilities as well as books.

We need the service early afternoon for those at home and then after school and evening for school children and those who work. We enclose a library timetable to show how other towns are supplied.

Also, in the plans for our hall and meeting rooms, we believe we need a library meeting room facility (similar to Pakenham) in the centre of town (perhaps on the present old hall site). An adequate sized meeting room would provide facilities needed by groups such as Midway and the Community Centre and BPA in the centre of town for daytime and evening use.

Cont on page 5.



Cont. from page 2.

A part of this process, Council will establish by the end of January a steering committee of community representatives to work closely with her.

The timetable for this study requires that a submission be made to the Community Support Fund by June this year. We will know whether that submission is successful within three months of the application, and if successful, construction must start within 12 months. With CSF funding of projects such as this, Council will be required to meet 50% of the total cost which may well be in the order of \$1M.

PUBLIC TOILETS

As reported in earlier Banners, Council has allocated funds for the construction of public toilets in Beaconsfield. An on-site meeting between Council Officers and community representatives examined possible sites in the township. There was a community position that the preferred site would be in Bob Burgess Park. However in the light of considerations of security, vandalism and easy access (particularly for travellers) it is felt that the toilets should be located in a well-lit and busy location. Council's recommendation is that they should be located in the vicinity of the bus stop near the shops. Council's preference is also for a modern type of toilet facility rather than one of the more traditional types that are more expensive to maintain and which are

perceived by the community to be unpleasant and unsafe.

Council Officers are now preparing a design for the site taking into account the integrity of the War Memorial and traffic movement at the top end of Wood Street. The most suitable type and design of toilet facility is also being investigated. A report on these will be made to next Beaconsfield Progress Association Meeting.

HARD AND GREEN WASTE COLLECTIONS

Bookings for this service are essential. Bookings can be made by telephoning Council on 5945-4348 before 12 noon on the WEDNESDAY before the collection week. The collection week is the week commencing on the first Monday of the month. So the next collections will take place in the week commencing 6 March.

LETTERS TO THE PRESIDENT

Cont. from page 4.

A larger hall as well, where people can hold 21st birthdays and bigger functions, would be better a little out of town where the noise, parking problems, alcohol, drugs, etc would not be in close proximity to the nearby residents.

We hope you will consider these suggestions in you recommendations to council and thank you for all the BPA is doing. We do enjoy the Beaconsfield Banner.

Yours faithfully,

Ann and Graeme Taylor
and family.

See page 16 for timetable.

FOR THE HOMEMAKER

We have a huge range of timber to choose from & the hardware and tools you will need to make that addition or alteration to your home.

**BEAconsfield
TIMBER & HARDWARE**

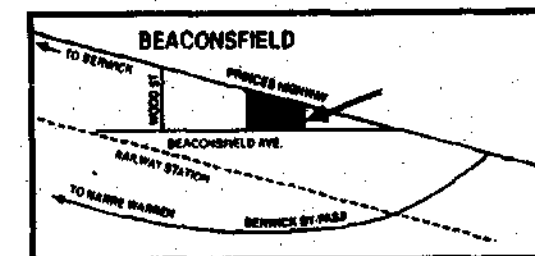
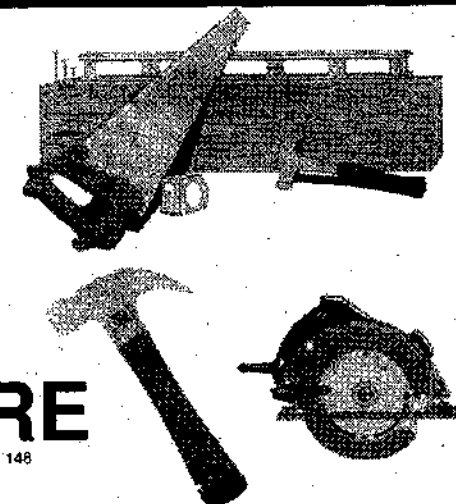
A.C.N. 004 680 148

PHONE US TODAY!

Lot 2 Beaconsfield Ave. Beaconsfield

Easy access from Highway or Beaconsfield Ave.

Phone 9707 5055 Fax 9707 3279



GREAT DEALS

ON ALL YOUR HOME IMPROVEMENTS NEEDS



- ★ Redgum Sleepers
 - ★ Western Red Cedar W'boards.
 - ★ Baltic Pine W'boards.
 - ★ Jarrah & Karri Flooring.
 - ★ Canadian Oregon
 - ★ Treated Pine Boards & Posts.
 - ★ Large Range of External & Internal Doors.
 - ★ Timber Decking (various species)
- DELIVERIES TO ALL AREAS DAILY

So for Friendly & Efficient Service Call in and See the Boys at

VAN STEENSEL TIMBERS PTY. LTD.

LOT 1, PRINCES HIGHWAY, OFFICER 3809 or phone

5943 2371

Fax: (03) 5943 2284



BEACONSFIELD COMMUNITY CENTRE

Beaconsfield Ave.

The Term One programme is currently being distributed throughout the Beaconsfield area. If you have not received a programme please contact Jeanette at the Centre on 9707 3449.

Our community centre provides a venue for the people of Beaconsfield and surrounding areas to socialise, learn and grow as a community as a whole. Participation in either the activity groups or courses will provide opportunities for both adults and children to meet new people or renew friendships and to learn new skills.

Activity groups includes - Midway, Line Dancing, 3 year old Pre-Kinder, Take-a-Break Occasional Care, Playgroup, Walking group.

Term One courses include - Easter Basket Cake, Chocolate making, Peek-a-boo dolls, Ribbon Roses, Calligraphy and Computers for Beginners.

For further information or bookings, contact Jeanette on 9707 3449.

Remember our motto: There are no strangers here, simply friends you haven't met before.

MAKE AND MINGLE

By Ann Taylor



Ann Taylor

For craft and friendship, join us any Wednesday from 2nd February 10am-12noon. We had a really enjoyable year last year and this year is promising to be even better.

We have some new crafts planned and the return of our popular crafts.

We will be learning ribbon flowers again with Bev and the old familiar crochet baskets and boxes. New

crafts will be a Victorian Needlecase for all your sewing pieces as well as candlewicking and a gorgeous patchwork bag. As always we will have bread dough crafts, greeting cards, stamping and papercraft.

Some people bring their own craft to finish off and others just come along for a coffee and a chat and everyone is welcome.

Give yourself a break and have 2 hours each week to relax with friends.

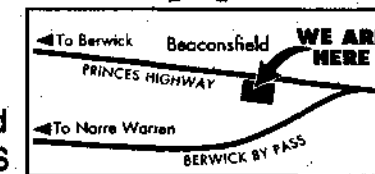
See you at Beaconsfield Baptist Church Cnr Souter Street and Old Princes Highway (next to the swimming pool) Wednesday 10am -12 noon during school term.

Enquires Ann Taylor 9707 1996

Beaconsfield Garden Supplies

Specialising in:

LANDSCAPING and GARDEN SUPPLIES



- ◆ Sand
 - ◆ Soil
 - ◆ Redgum Chips
 - ◆ Garden Mix
 - ◆ Red Gum Fire Wood
 - ◆ Pine Bark
 - ◆ Scoria
 - ◆ Mushroom Mulch
 - ◆ Crushed Rock
- SLEEPERS - Old and New

OPEN 7 DAYS A WEEK
- WE DELIVER -

100 Princes Hwy.
Beaconsfield

Ph. 9707 5144



DISCO IN THE BISTRO

WITH DJ PETER COMBES
PLAYING THE HITS OF THE 70s / 80s

NO COVER CHARGE
9pm. START
EVERY SATURDAY NIGHT

SUPER PUB EVERY FRIDAY NIGHT TO SHARE IN THOUSANDS OF DOLLARS IN CASH ASK ABOUT SUPER PUB CARD

For great food and friendly service, join us at "THE CENTRAL"

THE CENTRAL HOTEL : 1 PRINCES HWY. BEACONSFIELD 3807
PH : 9707 1511 FAX : 9796 2578

VIDEO VIBES.

By David Griffiths



David Griffiths

Here it is. This is supposed to be the ultimate film quiz. We would like to hear from anybody who claims they can answer all these questions correctly. There will be something special for anyone who can.

1. Which film that starred, was produced by and directed by Danny De Vito was a shock inclusion in the Top 20 films at the Box Office during the 1996-1997 film season (July 1996-June 1997)?

2. We know her as Rachel on Friends but in which low budget film did Jennifer Aniston make her debut?

3. In what Chevy Chase movie did televisions Buffy Sarah Michelle Gellar make her movie- acting debut in?

4. Speaking of Buffy, on the television show the characters played by Alyson Hannigan and Seth Green are dating. In which other movie did characters played by the same actors play boyfriend and girlfriend?

5. In Scream 2 which Australian actress (who is now renown for her role on an American television show) plays a minor role?

6. Which American actress was a major producer of the first Austinn Powers film?

7. Which films makers had to fight very hard back in 1939 to be given permission to the use the then obscene word "damn" in the film?

8. Name the Australian Film starring Colin Friels (who starred in televisions Water Rats) that was about the nuclear tests held in Australia?

9. Now for a two part question. (i) The song Five O'Clock World by The Vogues was used in what Robin Williams film, (ii) What television show now uses it as its theme music?

10. Name the three films that make up Kevin Smith's New Jersey Trilogy. A clue is Smith has a small part in each. He plays a character called Silent Bob.

11. In which Renee Zellweger film was the line "You complete me" uttered to her character?

12. In the film Titanic, Jack tells Rose about the fun he had at a certain lake. However this is a mistake in the script. Why was it impossible for Jack to have ever been to the lake he mentions?

13. Before penning the film Trainspotting writer Irvine Welsh wrote another film. It was directed by Trainspotting's director Danny Boyle and starred Ewan McGregor (just like Trainspotting). What was this film called?

14. In Spiceworld: The Movie what mode of transport did Victoria, Emma, Mel C, Geri and Mel B use to get around?

15. What was actor and comedian George Burns real name?

Over the next few months I will be working very hard to compile a list of films I believe are the best of last century. I will take a look at the top films in each category in the next Banner. Most of the films mentioned in this quiz should be available from Beaconsfield Family Videoland. Please post entries to "Video Competition", P.O. Box 217, Beaconsfield 3807. Entries to be received by 29th February, 2000. 1st correct entry opened will be the winner. Judges decision will be final. Results published in April Issue of the Banner.

GOODS AND SERVICES TAX (GST)

By Graeme J. Taylor. CA



Graeme J. Taylor. CA

The new tax system incorporating a GST will apply to sales of goods and services from 1st July 2000. The GST will replace the wholesale sales tax and various State taxes including FID, Debits tax and some stamp duties. The rate will be 10% and will apply to most goods and services other than:

exports of goods and services - health, educational and children's services - charitable activities and religious services. - local government rates, waste and sewerage charges - food for human consumption is GST free, but supplies of some prepared meals, take away meals, restaurants, alcoholic beverages and certain non-staple foods will be subject to GST.

The GST is a multi stage tax collected at all stages of production and distribution of both goods and services, but will effectively only apply to the 'value added' component. The GST is not a cost to business as a credit is allowed for input tax credit for GST paid on purchases to be offset

against GST charged to customers. The cost of GST ultimately is borne by the end user of goods and services ie. general public.

Some key features of the GST system include:

-Registration of businesses will be compulsory if the gross value of goods and services exceeds \$50,000 (\$100,000 for Non-Profit Clubs, Societies and Associations) Registration is optional if the gross value of goods and services is less than \$50,000 -Unregistered persons are not required to charge GST on their supplies and they cannot claim any input tax credit on their purchases. A Tax invoice must be issued by a registered person showing a taxable supply

containing certain details including ABN number and total price inclusive of GST -Businesses must lodge quarterly or monthly returns accounting for GST received less input taxes paid on purchases. -Goods imported into Australia are subject to GST. -Financial services for fees rendered eg. investment advice will be subject to GST -Residential rents will not be subject to GST and any purchases including renovations will be taxed -Construction and sale of new houses and renovations to existing homes will be subject to GST. However first home buyers may be eligible to a lump sum payment of \$7,000 to offset the additional cost.

Cont. on page 20.

BERWICK MONTUNA GOLF CLUB

BINGO

COSY FIRESIDE
DINING FRIDAY AND
SATURDAY NIGHTS

EVERY WEDNESDAY
EYES DOWN 8PM

- * Two fun & friendly sessions.
- * Great Cash & Prizes To Be Won
- * Delicious 'Homemade' Supper

All Welcome

For Enquiries or Bookings TEL. 9707 1887
Beaconsfield / Emerald Rd. (Entrance at Milk Bar)



OUR NATURAL WORLD

By Peter Hansen



Peter Hansen

to just that point; to get through today and let the bigger thoughts rest gathering dust on the shelf.

During the last 20 years (or more) there has been enormous changes in thinking about health. Gone are the days where you waited for illness to strike, THEN go to the doctor for medicine, with the hope that your health would quickly return. The New Millennium health approach is well in place now, and the word we use is "Prevention". No more defensive medicine, but preventative medicine. The simplest way to achieve this is to do simple things everyday of your life. Drinks plenty of fresh water, eat lots of fruit and vegetables, get enough sleep, and the nemesis of many people still, exercise.

Of all the studies carried out, all the research by scientists over the world, it has been found to be the supreme giver of health, simple, inexpensive and effective. It matters not what age you are, what health you're in, (physical or emotional) exercise can be tailored to suit anyone at all. There is abundant information available today on the incredible benefits to be gained, and once your whole health improves, your hopes and dreams will soar, changing what may have seemed beyond reach, to be there simply for the taking. Exercise is simply the key to the door of your hope chest. With good health, the New Millennium will be the treasure chest you had been looking for and all other things will be given unto you.

HEALTH IS WEALTH.

BEACONSFIELD AUTOMOTIVE SERVICES



Rob Robinson

Qualified Motor Mechanic
Licenced R.W.C. Vehicle Tester
& Repairer

Factory No. 1
94 Princes Hwy.
BEACONSFIELD



Lic Vic Roads
Vehicle Tester

PHONE: 9707 4468

Beaconsfield Lodge Motel

Stay in one of our new or
completely refurbished
and renovated units



Our 12 units feature double, twin or
queen size beds and a two brm family unit.

Your Hosts: Robin & Kathleen Best

**Budget
Motel
Chain**

1 Souter St.
Beaconsfield
9707 1454

Where do we start however? There must be a plan, and the desire and will to implement it, otherwise we turn in circles not knowing which direction to face, and what buttons to press.

My suggestion is to start right at the beginning, at a point where hopes and dreams derive their own life, energy, and power from. And where is that you ask? Simple. Your own health and well-being. Without health you have very little going for you, and life loses much of its shine, as each day needs large amounts of energy just to survive a day. Your hopes and dreams contract

BEACONSFIELD'S HANDYMAN

By Phil Collins

I know that so many home these days have new kitchens. Out comes the old one, in with the shiny new one - glossy cupboard doors, leadlighting, granite tops. Great if you can afford it but sad that many "old" cupboard units are sounder and stronger than their factory built replacements.

Recently I have performed facelifts on sound but dated kitchens and the results are dramatic: they don't look


as perfect as the full monty but they will prolong the life of the old kitchen for a few years. The 1970's kitchen had doors of dark teak laminate, bright orange and lemon tiles. With careful cleaning and treatment with ESP the laminate doors are painted a semi gloss white, shining chrome knobs, timber edging to the bench tops, a new tap set and some updated floor covering - for a small outlay you have a budget

face lift. The most recent job was instead a \$5000 to \$7000 kitchen makeover. It cost about \$500.

Pergolas roofed in polycarbonates like Laserlite are inclined to be uncomfortable

when the sun shines in summer. You can make them much more comfortable to sit under with my shade cloth sliding screens. They slide away in the Autumn and cost around \$300. I have one to inspect - you be the judge of their appearance and effectiveness.

Phil Collins, Handyman. 9707 4225



**1 RAILWAY AVENUE
BEACONSFIELD 3807**



This is a paid advertisement

FREE SPINAL SCREENINGS

Australian research indicates it helps low back pain. A Canadian Government study shows it's cost effective. West German researchers discover it helps headache. An American Government highly recommends it. A Danish study reveals it helps with childhood colic. A British study observes how its effects are long-lasting. A New Zealand inquiry proves its remarkable safety record. "Chiropractic Works"

A series of fun and educational talks will be occurring over the next few months on Wednesday nights at Beaconsfield Chiropractic Clinic.

As spaces are limited please phone and book a seat. This is free of charge.

Bedwetting	16th Feb
Whiplash	1st March
Irritable baby syndrome	15th March
Fatigue - Are you always tired?	29th March
Headache	12th April
Irritable Bowel Syndrome	26th April

**Dr. Craig Carter Dr. Steven Pratt
Dr. Raelene Hiddle**

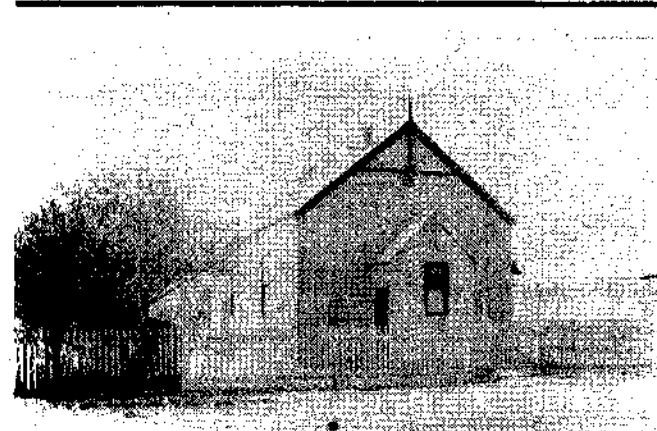
**Beaconsfield
Chiropractic
Clinic**

"Peak Performance -
Optimum Health"

16 - 18 Wood Street
Beaconsfield Vic. 3807
Ph: (03) 9796 1110
Fax: (03) 9796 1140

A SHORT HISTORY OF BEACONSFIELD PUBLIC HALL & COMMUNITY FACILITIES IN BEACONSFIELD

By Joy Bishop



The Beaconsfield Public Hall early last century

The Beaconsfield Public Hall was built in the early 1900's.

During the 1950's the Country Roads Board compulsorily acquired land for the eastbound lane of the Princes Highway. Houses in the way of this duplication were moved back during this period.

The Beaconsfield Hall was in the middle of what is now the eastbound carriageway opposite the shops.

In 1963 the hall was compulsorily acquired by the C.R.B.

During 1970 there was much discussion with Council regarding moving the hall back on the block of land but it was finally decided to build a new Community Facility including Public Toilets and Shops on the Community Centre Site immediately at the rear of the existing hall.

Newspapers in this period quote the Shire Engineer, Mr. Ron Chambers as saying that it was planned for the new hall to be on Council land, on the Community Centre site directly at the rear of its present situation.

Negotiations were being

held with Mr. Ted Budge for the purchase of that land.

The hall was demolished in 1970.

Severance took place; The Shire of Berwick was split at the Cardinia Creek to become the City of Berwick to the west and the Shire of Pakenham to the east.

Negotiations ceased, our new Council pleaded poor and the Progress Association went into recess.

Jane Poulton started campaigning for a new Infant Welfare Centre and Kindergarten in the early 1970's as our Infant Welfare Centre had gone with the hall. New mothers were forced to travel to Officer and Pre-School was held at Upper Beaconsfield.

A public meeting was held in the Shelter Shed of the Primary School to re-form the Progress Association. Jane Poulton later became Councillor Poulton and the Progress Association was offered the Buff's hall for meetings.

We again pushed for a hall and in 1976 the Council purchased an old building

which had been used at the construction site of the Cardinia Reservoir. This became a multi-purpose facility on the Primary School site. The school grew and took over this facility and the community was able to use it less and less.

During the 1980's Eddie Barron purchased the land east of the hall site and subdivided it. As part of his development contribution, and after lengthy negotiations with council, our Councillor Ted Owen and the hall steering committee, the present site was finally consolidated. About this time a developer proposed a commercial development between the Hotel and the hall site. The hall steering committee and the developer together with Council and with the help of Eddie Barron negotiated a deal for a hall at no cost in return for the use of the land. Joint car parking facilities were a feature of this venture.

Unfortunately the Communities expectations were again dashed when the recession at the end of the 1980's hit and the project was abandoned.

The Progress Association again went to Council for assistance for a hall.

Council then suggested as a temporary facility, until funds were available, that we be given the old Library that was no longer being used in Pakenham. This is the building currently known as the Community Centre.

Cr. Graeme Kidd, who regularly attends our meetings, made a commitment not to sell our

hall site until we had a firm commitment from Council for a new community facility.

Last year Gwen Neve from the Midway Club together with the Progress Association organised a petition for a new hall, this petition had over 500 signatures on it and was presented to Council.

At the November meeting of the Progress Association, Cr. Graeme Kidd indicated that Council was only prepared to spend a small amount on an extension to the Community Centre and any larger facility would be most probably at the O'Neil Road site at a much later date, at least 5 years.

Members present were not happy with this proposal of a much smaller facility than had previously been discussed by the Hall Committee and away from the existing site next to the doctors surgery on the Princes Highway which was the preferred site of those present.

There are 3 possible sites for the proposed Community Facility;

- (1) Corner, O'Neil Rd and Princes Highway.
- (2) The hall site next to the Medical Centre on Princes Highway.
- (3) The existing Community Centre site.

It is almost 30 years since our old hall was demolished and I'm sure everyone agrees that it is time for a proper community facility in Beaconsfield.

HISTORICAL BEACONSFIELD

Prepared by David Griffiths.

You probably walk or drive past them nearly everyday. But are you truly aware of what buildings in Beaconsfield hold historical value to the township. Let's have a look at some of the buildings that were named in the Cardinia Heritage Study.

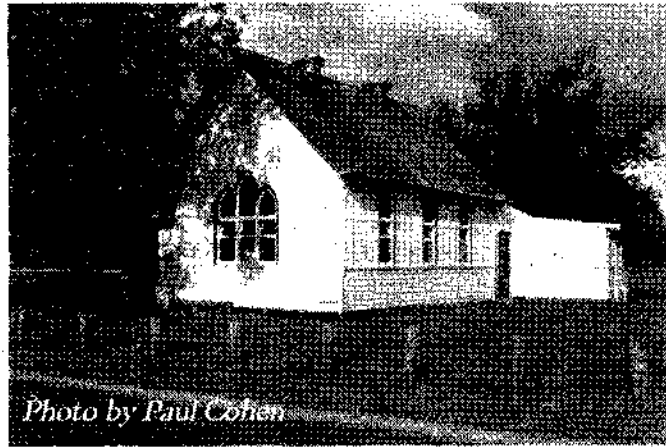


Photo by Paul Cohen

Beaconsfield Baptist Church.

OLD BAPTIST CHURCH

The old Beaconsfield Baptist Church which is situated behind the current Baptist Church. Originally the building was known as the Congregational Church and was built around 1920. It was used by the Uniting Church until 1978. The church building itself was used to hold concerts to pay off its building debt. The Sunday School held in the building was very popular during the 1950's, but when the Sunday Schools numbers dropped in the 1960's plans were made to move the church to Doveton. However after many objections from the local community the plan was never carried out. In 1978 the Berwick Baptist Church decided to lease the old Congregational Church and in 1985 the Church's name was changed to Beaconsfield Baptist Church.

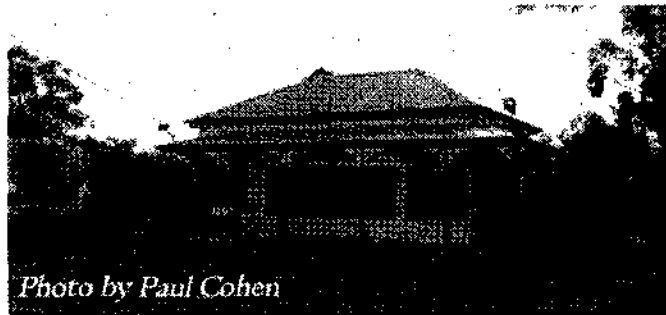


Photo by Paul Cohen

Beaconsfield's Post Office

WOOD STREET is perhaps the central area of historical Beaconsfield. Wood Street was once known as Woods Street (some history books claims the area outside the current kindergarten was named The Avenue and was very important as it linked the coach road to the railway station.) The historical houses that line Wood Street today were built between 1905 to 1915 (Edwardian-era). The group of homes which include

(Nos. 45, 56, 54, 46 and 48 Wood Street) are classed as one of the oldest housing groups in the Shire.

COMMERCIAL In early Beaconsfield, the commercial sector was made up of the Gippsland Hotel (speaking of hotels, take a look at the old building situated behind the current hotel in Beaconsfield - it is believed that it was once used as stables for Cobb and Co.), a store opposite and a blacksmiths shop. Wood Street also contained a timber yard, wheelwrights shop, paint store and an undertakers business. There was also a hay and corn store on the corner of Wood Street and Beaconsfield Avenue, it was burnt down and later rebuilt. Commercial building of historical interest in Wood Street consist of the Beaconsfield Post Office and Residence (built around 1910), the old Beaconsfield Meat Supply building at number 23 (c1920), 25 Wood Street (c1915), the old Wood n Craft store (c1915), and 26 Wood Street (c1910).



Beaconsfield Soldiers Memorial. c1920

THE WAR MEMORIAL On the 4 March 1920 it was announced that the Committee of the Memorial Fund had nearly enough money to build a Memorial Stone for a Beaconsfield Soldiers Memorial. The remaining money was donated to the fund and on the 13 March the Memorial was unveiled. Inscribed on the memorial were the names of the nine Beaconsfield residents who lost their lives during the first World War. Just across from the War Memorial stands five Elm trees (outside the kindergarten). It is unknown when they were planted but they are of historical significance to Beaconsfield.

HOLM PARK.

Holm Park is situated at 237 O'Neil Road. It was constructed by George Ramsden, who was a Melbourne financier in 1879. Ramsden offered the property to the Governor of Victoria as a country seat (he declined and instead took a house at Mt. Macedon). So in 1883

HISTORICAL BEACONSFIELD

Cont from Page 12.

Caroline Armitage along with her 5 sons and daughters (the widow of Charles Armitage) bought Holm Park. They extended it by adding a servants wing and a ballroom. They also developed an exotic garden (prior to 1900). The Armitage family owned Holm Park until about 1945.

BEACONSFIELD STATION MASTER'S RESIDENCE

The old Beaconsfield Railway Station Masters Residence which is situated in Beaconsfield Avenue was built in 1888 by James Adamson for Charles Nott who owned the nearby Kenilworth Villa. It was possibly built as a gate lodge. It was once known as Kenilworth Cottage and was used as a ladies college. However it was later let to Mrs Anderson (who was linked to Young and Jacksons), her six children and their friends. Among the children was Stanley Melbourne Bruce who was later to be Prime Minister of Australia. The college was also let to J.C. Hodgson (who was Shire Secretary) and a young doctor, however he only ever had one patient, a person with a broken arm.



Photo by Paul Cohen

Station Master's Residence

These buildings are of a substantial value to Beaconsfield. Already many of our historic buildings have been demolished (eg. many of the early homes from Wood Street and also the old Primary School). We should all be proud of our heritage and not allow anything to happen these buildings if the threat should arise in the future. There has been some talk that the old church may be demolished or moved in the future. Let's hope that nothing will happen to any of the historical buildings and that they will remain there for future generations.

WINE & FOOD

By Keith Goodman



Keith Goodman

The dreaded 2000 gives us an opportunity to look at what is happening on the wine and food scene.

As I warned over the past couple of years, wine prices have risen by 100 - 200% in some cases. The world has discovered our wine and is prepared to pay what to them is a moderate increase in price which combined with their good exchange rate will continue to drive our prices to our disadvantage. Just look at crayfish, scallops and abalone. The proliferation of 'reserve' wines has been one of those 'good news-bad news' issues. Out of it has come some glorious wines but too often we are seeing over extracted and over oaked wine that I can't say are pleasant to drink and can cost from \$30 - \$80. Often the normal label is much more approachable at half the price.

In the Supermarkets companies are making quantum leaps in the variety and quality of fresh food, particularly fish. Another leap forward are the in-house magazines now found at Safeway, Goodtaste - \$2.50 and Coles, Table - \$2.95 both are excellent reading and feature many ideas for the food which you could expect to find in the shops that month. For instance January features fruits and

berries and salads - the magazines must be hurting the more traditional magazines which sell at double the price.

While on food, Pursell's Fruit Mart on High St, Berwick has to be one of the gems of their trade in all of Melbourne. The absolute quality of the produce is evidenced by the fact that they buy for or supply most of the restaurants in the district. Father John and son Andrew select and buy from the markets every day and Mrs. Purcell leads a welcoming team in the shop. Also open on Sunday morning.

I recently tasted two impressive wines made by Sergio Carlei for Tom & Sue Steler from fruit grown at Upper Pakenham. Both wines could not be described as heavy or deep coloured but were perfumed, elegant and very easy to drink. In fact so easy I would call them dangerous wines as the bottle could be empty before realised. These shiraz and merlot are impressive first wines. The only question I pose is that both of these wines were from a hot year producing clean late ripening fruit and only time and a short wet summer will test the ability of the vines to re-produce the current fruit quality. A lively discussion at the time did not solve the search for a vineyard name but heading the field was a variant on the family surname. Stellar (celestial says Roget's) - sounds good.

A recent bottle of Wynns Reising 1999 was fresh, true to type and certainly good value at \$8. Try and find Mitchells' Growers Semillon 1998 at \$12, very good. We celebrated Anne's birthday this week over a bowl of Bouillabaisse at Sacrebleu at Mt Dandenong and a bottle of Mc William's Elizabeth 1986 - very pleasing. The current 1994 at \$12-14 is a steal for a wine which has already won many Golds and Trophies and will keep for years.

QUALITY COMES TO TOWN AT INDIAN RESTAURANT.

By Ted Horton

Surya is the new name at Shop 3, 16-24 Princes Highway. (next to the Pharmacy). They now serve very fine authentic North Indian and Tandoori Cuisine.

The new owner Manu Suri, his wife Anita and Master Chef Ashok Sethi bring over half a century's experience between them from International Hotels & Restaurants in India. With the Sheraton Group and Oberoi they even taught cooking skills and now offer Beaconsfield the best you could wish for.



Photo by Paul Cohen
Master Chef Ashok Sethi and Owner Manu Suri.

Basmati rice features in six rice dishes on the menu. There are eight different Indian breads and vegetarians are spoilt with ten choice main dishes and entrees. Seafood, chicken, lamb and beef complete the rest of the menu with ever popular Tandooris, Vindaloos and Madras Curries. You can order Mild, Medium or Hot.

Reasonably priced entrees are \$3.50 to \$7.50, Main Courses \$8.00 to \$13.00 or treat yourself to a banquet - four courses \$21.00 or \$25.00 per head.

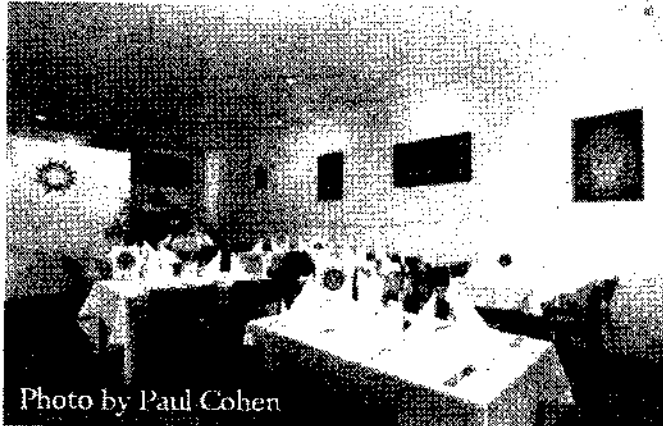


Photo by Paul Cohen

Inside the refurbished restaurant.

To satisfy discerning palates they even serve home made ice cream with fresh nuts, cream and crushed mango garnish.

Cleanly set out with white linen table cloths and napkins they seat up to 60 people and are open 6 days 5.30pm - 10.30pm with Monday closed. Take Aways at 10% discount can be ordered on 9796 1555. TRY THEM.

GOODYEAR - NEW MANAGEMENT

By Ted Horton

Don Gains from Hampton Park has been appointed New Centre Manager for Beaconsfield's Tyre Service on the corner of Wood Street.

Originally from Cowes, Phillip Island he is keen to maintain country style friendly service. However, with all types of tyres from 10" to 16", plus a full brake, lube and front end service they mean business with the meanest of prices to match any competitor.

Every car that comes in for tyres is automatically given a free 72 point safety inspection and report. From 7.30am to 6pm, every day of the week they'll fix a tyre for you within the half hour or

replace with a set of four new ones within one hour.

With 15 years tyre and auto mechanical experience Don's advice is good on all matters ranging from tyre tread indicators to correct pressures to prices on many different grades of tyre. For an additional \$5 per tyre they'll even insure against certain types of damage.

For Community service - they still offer their forecourt free for organisations doing Saturday morning car washes.

For the best price and right advice don't drive past Don. Your life depends on the life of your tyres.

THE SINCLAIRS.

by Tony Rushton.

On a recent visit to Queensland last year we looked up Betty and Les Sinclair who sold their home on the corner of Adamson Road and Drury Street, Beaconsfield about seventeen years ago. Betty and Les chose a very steep block right against a heavily timbered park at Nambour, where they

built their home. They have many native birds and animals visiting their garden regularly. Les, who has now retired runs stalls at local markets, where he sells childrens' swings, bicycles, tricycles and other toys. Betty works as a volunteer at local "Op." shops in Nambour.



Betty and Les Sinclair.

COFFEE AND DESSERT EVENING

LADIES LADIES LADIES

Come and enjoy a night out.

When Friday 31st March
Time 7.30-9.30 pm
Where Beaconsfield Baptist Church Old Princes Hwy, Cnr Souter Street (Melways 111 J12)

SPEAKER

Sharyne Stanley (Prison Network Ministries) Musical Items. Delicious desserts and coffee.

Cost \$5.00 each Contact for tickets Ann Taylor 9707 1996 or Pam Wasilenko 9796 1318 Bookings essential to be made by 24th March 2000. Victorian Women's Christian Convention.



SCOTT HOLDINGS PTY LTD
For prompt, friendly service with

**BOBCAT
BACKHOE
TIPPER AND
RETAINER WALLS**
TELEPHONE

9707 1685

0418 532 358

Stuart Scott

PAYNE RD. BEACONSFIELD

• GET FIT •

*Sensational
Special*

12 Months Full
Membership

\$295

NEW EQUIPMENT
NEW CIRCUIT

OPEN 7 DAYS

**BEACONSFIELD SQUASH &
FITNESS CENTRE - 9707 2929**

29 Wood Street, Beaconsfield

If you have a Legal Problem call -

**WOLLERMAN
SHACKLOCK**

BARRISTERS & SOLICITORS

We provide a full range of Legal Services including

- * Subdivisions * Wills and Probate * Commercial Law
- * Motor Vehicle Accidents * Land Development * Legal Services for Small Businesses
- * Fixed Price Conveyancing - Sales and Purchase * Criminal Law including Traffic Offences
- * 24 Hour Service * Family Law, Adoption and De Facto Spouses

FIRST FLOOR, 8 GLOUCESTER AVENUE, BERWICK

Telephone: 9707 1155, Facsimile 9707 4834

THE STEERING JOINT WE AIM TO BE THE BEST AT WHAT WE DO

BECAUSE YOUR CAR DESERVES PEOPLE WHO CARE

- ★ FULL MECHANICAL REPAIRS
- ★ SERVICING OF ALL MAKES & MODELS
- ★ ELECTRONIC TUNING
- ★ BREAK & CLUTCH REPAIRS
- ★ FRONT END REPAIRS
- ★ WHEEL ALIGNMENT
- ★ WHEEL BALANCING ON & OFF CAR

FREE PICK UP & DELIVERY LOCAL AREA

EVERY VEHICLE SERVICED AT

THE STEERING JOINT

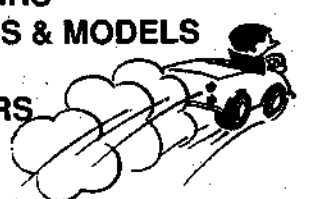
IS DETAILED FREE! OF CHARGE

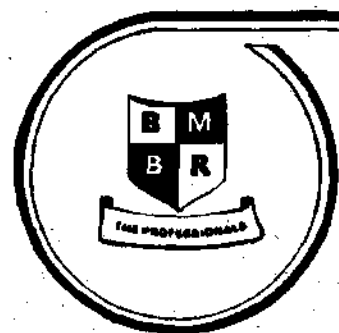
YOUR CAR WILL LOOK AND FEEL GREAT

ALL WORK GUARANTEED

**FREE
NO OBLIGATION
QUOTES**

**12 WOOD STREET
BEACONSFIELD
PHONE 9707 3393**





Berwick Motor Body Repairs

PTY. LTD.

SPECIALISING IN
INSURANCE SMASH REPAIRS
FOR ALL MAJOR INSURANCE COMPANIES

Using Universal Car Bench

Dedicated Jig System

European Paint Baking Oven

24 HOUR TOWING SERVICE

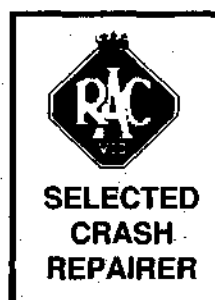
9796 1199

BODY SHOP

5943 2343

PRINCES HIGHWAY
OFFICER, 3809

COURTESY CAR AVAILABLE



SUMMER GARDENING

By Berwick Greenery.

The most important job in the garden over the summer months is ensuring your plants have enough moisture. Apart from regular deep watering, you can assist the conservation of moisture with mulching. Mulching will not only help with moisture retention, but also keep the roots of plants cooler and deter weeds, so it is well worth while.

There are lots of materials you can use for mulching, from your own compost through to bulk or bagged products available at garden centres. The best I have seen is Debco "Mulch n Feed". This bagged product is a fine composted mulch with the addition of a slow release fertiliser "Green Jacket" and the rewetting agent "Saturaid". Saturaid assists the water to penetrate the soil and get to the roots. So with this excellent product you are not only mulching, but feeding and adding a rewetting agent as well. Saturaid can be purchased separately in a variety of sizes, and is excellent for those areas of the garden or containers where the water does not penetrate

the top layer of soil and runs off.

Other jobs for this time of the year include:-

Pruning and feeding roses to provide a good follow up Autumn flowering. Annuals such as petunias that are past their peak, can be cut back and feed to give you another show of flower while the weather is still warm.

Fuchsias will also benefit from a light pruning, and regular feeding.

Any shrubs that have finished flowering can be cut back to promote growth and flowering. This includes daisies and some varieties of lavender, but remember that both these plants respond to a light pruning regularly rather than a severe prune, do not cut them back into old wood.

Still time to select summer favourites like hibiscus, gardenias, bouganvillea, summer flowering perennials, plumbago, and roses in bloom. Also a good time to purchase indoor plants or repot those you already have.

LIBRARY OPENING TIMES

Narre Warren 9704 7696
Mon. & Fri.....10am - 6pm:
Tues.Wed. Thurs. 11am - 9pm:
Sat.....10am - 4pm:
Sun.....2pm - 5pm:

Pakenham 5941 2036
Mon.....10am - 6pm:
Tues. Thurs. Fri.....11am - 6pm:
Wed.....1pm - 8pm:
Sat.....10am - 4pm:
Sun.....closed.

Upper Beaconsfield - Mobile Library
at Charing Cross.

Tues.....11.30am - 1.30pm
Berwick Mechanics Institute and
Free Library 97073519
Mon.& Tues.....11.30am - 5.30pm:
Wed. & Sun.....closed
Thurs.....9.30am - 5.30pm:
Fri.....9.30am - 5.30pm:
Sat.....7.00pm - 8.30pm:
Sat.....9.30am - 12.30pm:

A NEW YEAR



Rev. Gary Piper

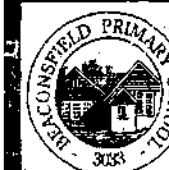
Isn't it amazing how we are able to hold contradictions in tension in our minds? We talk of "New Year", and with the New Year many people make all kinds of resolutions as though it really were a fresh beginning, but at the same time we say that there is nothing new under the sun! The year has begun with all the terrible news and troubles that characterised last year, there is disease, terrible debt in the two thirds world, and crime.

History abounds with what people thought were new beginnings. There was the Renaissance, the New World; there were the revolutions and the new republics; and there were even those optimists who searched for or began new Utopian communities. Where are all those bright hopes? What has happened to all the wonderful promises? Where are the Utopias now? I look at what I have written and the thought strikes me that these words are very depressing, especially at the outset of a new century! However, it is true! Human history shows no great leaps forward, and a depressing tendency to decline into savagery - will we never be rid of the horror of racism and abuse?

A careful study of the Bible reveals that the Ancients knew the same truth: "Meaningless, meaningless!" cries the author of the book Ecclesiastes, and St. Paul wrote, "For in my inner being I delight in God's law; but I see another law at work in the members of my body, waging war against the law of my mind and making me a prisoner of the law of sin at work within my members. What a wretched man I am! Who will rescue me from this body of death?" In the Bible there is the clear recognition of the social and personal struggles of humanity.

There is more though, and this is where I want to lead our thoughts for this year. Though St. Paul knew the inner turmoil and the pain of personal failure, he also knew the secret to hope and triumph over personal moral failure and the strife of society. St. Paul made a discovery that revolutionised his life, and that same discovery revolutionised society. The Gospel made such an impact on the world of St. Paul that people said: "These men who have turned the world upside down have now come here...". This same Gospel has revolutionised my life, and I know it can do the same for you. Each of us, individually, and our world in general needs real change, it only makes sense to allow the Creator to recreate us and our world:

Cont. on page 20.



BEACONSFIELD PRIMARY SCHOOL

Cnr Lyle Ave. & Princes Hwy.
P.O. Box 251. Beaconsfield. 3807

We provide
a stimulating curriculum
in pleasant surrounds for
all children Prep-Year 6.

Parents and children are welcome
to visit the school. Phone for an
appointment to arrange a tour
with the Principal, Di Lockwood.

9707 1510



From a fine tradition to an exciting future.

PUBLIC ACCOUNTANTS

Are you in business or wage and salary earner?
Are you unhappy with your current accountant?

We make the change easy for you and guarantee
our service. **Free 30 minute consultation.**

We provide Accounting and Taxation services

- ◆ Taxation and advice.
- ◆ Company, Partnership, Trust & personal Tax Returns.
- ◆ A.S.I.C. lodgements.
- ◆ GST systems, procedures & compliance.
- ◆ Establish Companies, Trusts & Partnerships.
- ◆ Workcover & Superannuation compliance for business.es.
- ◆ Monthly, quarterly accounting & bookkeeping service.
- ◆ Computer consulting & information technology.
- ◆ Business Loans, Leases & Hire Purchase arranged.
- ◆ The latest Tax Planning Ideas to legally minimise tax.
(Including negative gearing & rental)

Call today & we will come & see you personally!!!



**Michael
Muaremov
& Associates Pty Ltd**
A.C.N. 090 568 862

Level 1, Beaconsfield-Central 27 - 33 Wood Street
P.O. Box 402, Beaconsfield Victoria, 3807

Phone: (03) 9769 9134

Fax: (03) 9769 9164 Mobile: 0416 136 562

BEACY'S NOTICE BOARD

WINDOW CLEANING

Domestic & Commercial

JOHN PLOWMAN

18 Years Experience

Ph. (03) 9704 1271

or

Mob. 0418 597 630

MELALEUCA LODGE
CNR BRUNT RD., PRINCES HIGHWAY

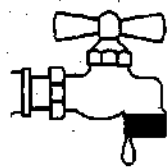


Modern accommodation
including deluxe spa units

Wedding Receptions
Conferences
Functions

Contact Neilma or Graeme
for Inspections or Bookings 9796 1044

PLUMBERS



R. A. Weeding

Mob: 0412 057 325
or 018 324 332

103 Princes Hwy.
Beaconsfield 3807

A.H.: 9796 2248
Fax: 9796 2241

LEIGH HUNTER
REMOVALS & STORAGE
LOCAL COUNTRY INTERSTATE



PRE-PACKING SERVICE / ANTIQUE & PIANO SPECIALIST
PHONE: (03) 9707 5700 OR 9768 9153
LOT 103 - 110 Princes Hwy. Beaconsfield Vic. 3807

Dr. Robert A. Panjkov
B. D. Sc. (Melb.)

DENTIST

Unit 4 87 Wood Street
Beaconsfield 3807

Ph. 9707 3508

Beaconsfield Counselling Service

Children, Adolescents and Adults.
Educational assessments, toddler problems, bullying.
Slow to learn, Stress and workplace problems.
Anxiety and Depression, Pain, Trauma and injury,
Grief, assertion and self esteem, confidence and motivation.

Telephone: (03) 9796 2277 (Voice mail)
Consulting: Suite 3, 27-30 Wood St.,
Beaconsfield. 3807

BEACONSFIELD MASSAGE THERAPY

Relaxation, Therapeutic, Sports, Aromatherapy,
Acupressure, Cupping

Jenni Chisholm,
Incorporated Clinical Masseuse (MSCM)

TREATMENT OF MUSCULAR ACHES & PAINS,
HEADACHES, STRESS & TENSION

Phone: (03) 9768 9195 or 0408 359 103

DENTURE CLINIC

ADVANCED DENTAL TECHNICIAN

Paul Reed

*Full Denture Services - Mouthguards
*Denture Repairs - Relines
Victorian Pensioner Denture Scheme.
Veteran Affairs Patients, Workcare Claims
Private Health Rebates

14 Wood St.
Beaconsfield.

Ph. 9707 4015

BEACY'S NOTICE BOARD

GRAEME TAYLOR A.C.A.
CHARTERED ACCOUNTANT

*Registered Tax Agent (E.L.S. Facilities)

*Registered Company Auditor

*Thirty years professional experience

Providing personalised financial, taxation,
management accounting, auditing,
superannuation and corporate secretarial services.

Appointments at Oakleigh or Beaconsfield
Okey Stopp & Taylor 9569 7516

THE BACK VERANDAH



ANTIQUE
FURNITURE
RESTORATION

FRENCH POLISHING
WOOD TURNING
GENERAL REPAIRS

ROB & ANNETTE Ph: (03) 9769 9902 ALL HOURS
MOBILE: 041 758 8908

IF YOU WOULD
LIKE TO ADVERTISE
IN THE BANNER
CONTACT WILLEM
BOON ON 9707 5053

ELECTRICAL CONTRACTOR



Domestic, Commercial,
Industrial
installations and repairs

PETER STEELE - R.E.C. 8772

Phone 9707 4906

Mobile 0418 392 370

23 Hudson Street, Beaconsfield.

TYREPOWER

RAY LAWN
Proprietor

BERWICK TYREPOWER
43 Clyde Road, Berwick, Vic. 3806
Tel 9707 3177 Fax: 9796 1836

JUST PATCHWORK



Rhonda Barry

Shop 8, 27-33 Wood St.
Beaconsfield Vic. 3807
Monday - Friday: 9.30 to 5pm.

Ph.: (03) 9796 1667
Saturday: 9.30 to 1pm.

LANDSCAPING / ROTARY HOEING GRASS SLASHING / LAWN MOWING

* Small 4WD Front End Loader for Hire

* Free Quotes



Phone Graham
9796 1297 or 0418 563 456

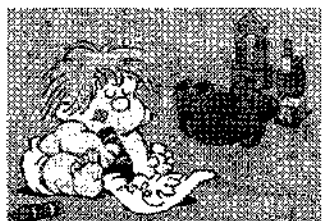


* Fun Packs with easy to follow Idea sheets
* Hard to find items, Matchsticks, wiggly eyes, craft punches
* Card-Making Supplies, Rubber Stamps & Accessories
Demonstrations or individual Orders Benefit from our hostess gifts
Crafty Kids is for all kids at heart,
Ages 3 to 103

Consultant ID 1228: Margaret Boon 9707 5053

BEACONSFIELD CHILD CARE & EARLY LEARNING CENTRE

6 Stella Street



Opening Hours 7.00am - 6.00pm Monday to Friday

Child Care Fees:-

Full Time

Weekly Monday to Friday \$150 Per Child

Part Time Permanent

Daily: \$32.00

Half Day Sessions \$18.00

Casual Daily: \$40.00 Per Child

School Children

Before/After School Care: \$8.00 Per Child

SESSIONAL 3 YEAR AND 4 YEAR OLD KINDERGARTEN

B.H 9707-5532 A.H 041-951-2243

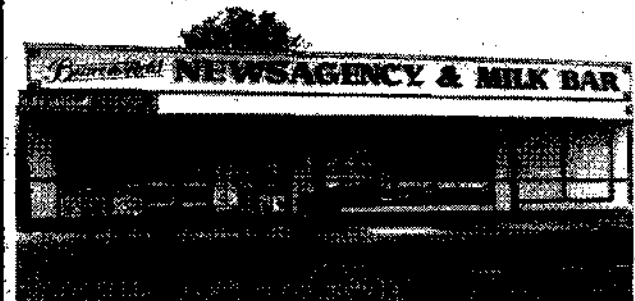
Government Assistance Available

BEACONSFIELD NEWSAGENCY & MILKBAR

12-14 Princes Hwy, Beaconsfield.

- * Specializing in all your newspaper, magazine, & stationery needs, along with 7 day a week newspaper delivery service.
- * Catering for all your lunch time needs with pies, pasties, sausage rolls, hot dogs, dim sims & gourmet sandwiches. As well as a range of weekly specials.
- * Quickpicks for Thursday & Saturday nights.

Ph 9796 1977 Fax 9796 1937



GOODS AND SERVICES TAX (GST)

Cont. from page 8.

-No GST is charged on residential land when sold by a private individual or on the sale of an existing family home. When land is sold by a property developer GST is only charged on the margin generated on the transaction.

-When GST starts businesses will be able to claim a credit for sales tax already paid on stock held at 30th June, 2000, thus requiring businesses to do a full physical stocktake.

-To minimise the effect on the motor vehicle market, input tax credits are reduced or eliminated in the first two years. -Sales of second-hand goods are subject to GST if the seller is registered.

The Australian Taxation Office has forwarded to business taxpayers a personalised package for registering for an Australian Business Number (ABN), GST and other elements of the new tax system. Businesses must register by 31 May 2000. In the future the ABN will become the only number businesses will need for all dealings with Government. When it is fully operational, businesses will only need to notify one government agency once of any changes to their business details. As part of the tax reform package there will be significant personal income tax reduction (80% of the population will pay no more than 30 cents in the dollar) and abolition of provisional tax where tax will be paid quarterly.

The introduction of GST on 1st July, 2000 will present businesses with

more record keeping requirements of transactions on a timely basis to enable quarterly returns to be prepared, lodged and GST paid by the 21st day of the following month. Accordingly, business systems and procedures should be reviewed and updated to ensure compliance with GST Regulations. ("Get Started Today"). Your Accountant should be available to assist in matters with the administration of GST.

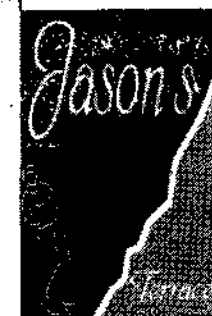
A NEW YEAR

Cont from page 17.

And he died for all, that those who live should no longer live for themselves but for him who died for them and was raised again. So from now on we regard no one from a worldly point of view. Though we once regarded Christ in this way, we do so no longer. Therefore, if anyone is in Christ, he is a new creation; the old has gone, the new has come! All this is from God, who reconciled us to himself through Christ and gave us the ministry of reconciliation: that God was reconciling the world to himself in Christ, not counting men's sins against them. And he has committed to us the message of reconciliation. We are therefore Christ's ambassadors, as though God were making his appeal through us. We implore you on Christ's behalf: Be reconciled to God. (2 Cor. 5)

May this year prove to be the beginning of New Life for you.

Rev. Gary Piper
Beaconsfield Baptist Church.



SPLIT THE BILL

25% OFF TOTAL FOOD BILL
EVERY WEDNESDAY EVENING DURING FEBRUARY.

4 or more people to book. Must present coupon - 1 coupon per table

HOURS:-

Tuesday - Sunday DINNER,

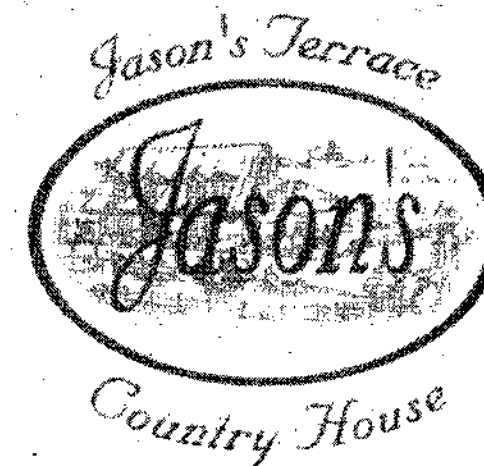
Wednesday - Friday LUNCH

JASON'S TERRACE

Fully Licensed Restaurant

29 - 33 Wood St. Beaconsfield.

Phone: 9707 5900



DO DRUGS MAKE YOU FEEL BETTER ?

By Dr. Raelene Hiddle

When the drug problem in our society has escalated to such an extent that State Government considers a proposal to create not only "safe" injecting rooms, but also "safe" drug dealing environment, we are forced to sit up and take notice.

We wonder how did this problem creep up on us? It's not enough to ask 'How did things get so bad?' anymore. It's time to look at what society has created and look at why we created it. Then we can come up with some sensible answers on how better to manage our drug problems. Are we building an environment where the drug dealers and pushers are protected? Is this the right way to go? Or is it time to really start to empower the people who need it most - the potential addicts of the future - our children.

A possible place to start is to look at the drug mentality itself: How have

we created a society in which people so readily turn to drugs for an answer, to the exclusion of everything else they should value in their lives? Where do we lose sight of our own power? One of the major contributors is the subtle but constant message that drugs make you feel better. This attitude pervades our reading, our TV watching, almost every aspect of our lives and it starts from day one.

Think about what may happen when your baby is born and gets sick for the first time. You immediately run to the doctor in a panic to alleviate your child's apparent suffering at any price and give your child a drug. As they grow up to become toddlers they may get another cold or infection and so that they don't "suffer" you give them a drug. They continue to grow up and at times they don't feel so good, so what do you do to make them feel better? A pattern emerges. Drug companies market

their products - which of course are drugs, to doctors and parents with little emphasis placed on the side effects that come with them. But even worse than the side effects is the message that it sends.

From the time children are born, they get the message that when they feel bad, they can take drugs to make them feel better. As subtle as it seems, this behaviour is conditioned. They see it every time you say 'I have a headache' and you choose to take a pill. Is it any wonder that when life gets hard - as it inevitably does at times - people turn to drugs to relieve the pain. Of course there are prescription medications which are necessary for certain conditions. But we need to stop the insanity of "quick-fix-relief". A change of treating the 'cause' of the symptoms needs to occur. Millions of people are already making the change. In the last year, people made over 500,000 more

visits to the holistic doctors (looking at the body as a whole) than they did to medical doctors, and chiropractic is spearheading the change. As far back as Hippocrates, we recognised the power of the body. He said "The natural healing force within each one of us is the greatest force in getting well." Thomas Edison also said "The doctor of the future will give no medicines but will interest his patients in the care of the human frame and in the cause and prevention of disease". People today are demanding information on how to build the body's immune system for long-term health benefits rather than receiving constant crisis care. When our children are empowered in their own strength and healing capacity, can the possibility of a solution to drug abuse be found.

Dr Raelene Hiddle has recently joined the team at Beaconsfield Chiropractic Clinic. Look for Seminar dates in their advertisement in this Banner.

POSITION WANTED	FOR SALE	DISCLAIMER	MAILING LIST FOR THE BANNER
GRAN. seeks position in your home - Berwick area. Family support - babysitting, child minding, adult companion and/or carer. 25+ years experience including Special Needs - no heavy lifting. Avail. day or night. Reasonable rates, references & Police Check. Phone 9707 4637	LIVESTOCK SALE ALPACA, quality solid black female, mated to Kingston Park Paragon, AAA reg. 9707 5589. STIK-EES Window decorating kits and activity sets - creative fun for everyone. Order sets from local distributor. Fundraising options available. Ph. Kaye 9707 5589	While every care has been taken in preparing this newsletter there may be something that has been overlooked or printed incorrectly. Please give us a call if articles or adverts do not appear as you intended. Some articles and photo's are covered by copyright, please have the courtesy of contacting us if you wish to copy any part of the Banner.	For those people who are interested in receiving the Banner by post, this can be arranged for a pre-paid cost of \$6. per year. Please send name, address and money to: Treasurer, Beaconsfield Progress Association, P.O. Box 217, Beaconsfield 3807
CONGRATULATIONS To Alan Campbell and Ebony Knol for being chosen to carry the Olympic torch. Look to next issue for more information.	CLOSING DATE FOR NEXT BANNER IS 10th March 2000		ROSES AND THORNS ROSES To shop keepers who clean graffiti off their premises. THORNS Inconsiderate people who let off fireworks and scare everyone including dogs.

TBT BERWICK TRACTORS & TRADING CO. HFM

INC. HOBBY FARM MACHINERY

"The place where you do a good deal better."

Huge Range of New & Used Tractors & Implements

AUTHORISED DEALER

J. BERENDS • KANGA • SOVEMA • DAKIN IMPLEMENTS
TRU LINE POST DRIVERS • TOWNMOW SLASHERS • ATVS
Gordon, Tim & Leon Suggate

(03) 5943 2460
(03) 5943 2470



411 PRINCES H'WAY
OFFICER, VIC 3809

BEACIE SERVICE CENTRE

SERVICING & MECHANICAL REPAIRS TO
ALL TYPES OF VEHICLES INCLUDING:

- * 4x4 & Light Commercial
- * Tune-Ups
- * Brake & Clutch
- * Front End Work
- * Exhaust Systems
- * Transmissions
- * Motors

Licensed Roadworthy
Tester



Lic Vic Roads
Vehicle Tester

MAJOR & MINOR WORK

Contact Gary or Ross
BEACIE SERVICE CENTRE - All Guaranteed -
122 PRINCES HIGHWAY BEACONSFIELD 9796 1401

ROSES AND THORNS

ROSES To shop keepers who clean graffiti off their premises.

THORNS Inconsiderate people who let off fireworks and scare everyone including dogs.

Like to advertise in
Beacy's own paper
"THE BANNER"

Fill in the form and leave it
at the Post Office.
Name of Advertiser.....

Phone Number.....
Address to which account is
to be sent.....

Message.....

Rates for advertising:

1/4 page in a single issue \$30.
1/2 page in a single issue \$55.
Full page in a single issue \$90.

All above rates 10% discount
if paid in advance.

Beacy's Notice Board \$12.50
per issue.

Classifieds: minimum charge
\$3 for 5 words + \$1 for every
5 words thereafter.

V FAMILY
IDEOLAND
BEACONSFIELD
CNR. SOUTER ST & PRINCES HWY.
PH: 9796-1041
OPEN EVERY DAY
12 NOON - 9 PM



There's something about your first piece.

LAKE
PLACID
IN A SAVAGE LAND
THE THOMAS
CROWN AFFAIR
TARZAN

The **Last Witness**

AMPLE WELL LIT PARKING AT REAR OF LIBRARY

Coming Soon

runaway bride

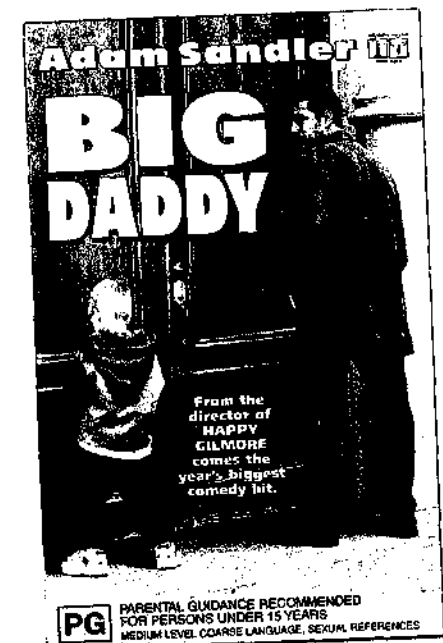
IDLE HANDS

PUSHING TIN

THE OUT-OF-TOWNERS

DEEP BLUE SEA

TEA WITH
MUSSOLINI



ELMO IN
GROUCHLAND

1/2 PRICE ON
ALL OVERNIGHT VIDEO'S
MONDAY TO WEDNESDAY
(EXCLUDING PUBLIC HOLIDAYS)

WEEKLY SPECIAL
ANY 3 WEEKLYS FOR \$5
ANY 6 WEEKLY FOR \$10

TENNIS CLUB NEWS

By Margaret Chatfield

Welcome back to the year 2000.

Congratulations to Wednesday's Midweek Ladies Section 5 only Premiers for the spring season 1999. Team members - Sharon Prain, Gill Hannon, Carol Godham, Sharon Powell, Arele Goldsmith.

Contact for Midweek Ladies is Glenda Gorton on 97072906.

Night Competitions - Enquiries for Tuesday night Unisex Beginner to B Grade - Contact Margaret Chatfield on 97072016. Next comp starts 2nd May.

Contact Ian Craig on 97074507 for Thursday night Mens Singles/Doubles.

Seniors and Junior winter competition commences 29th April. Enquiries - Lynn Day on 97074662 for juniors.

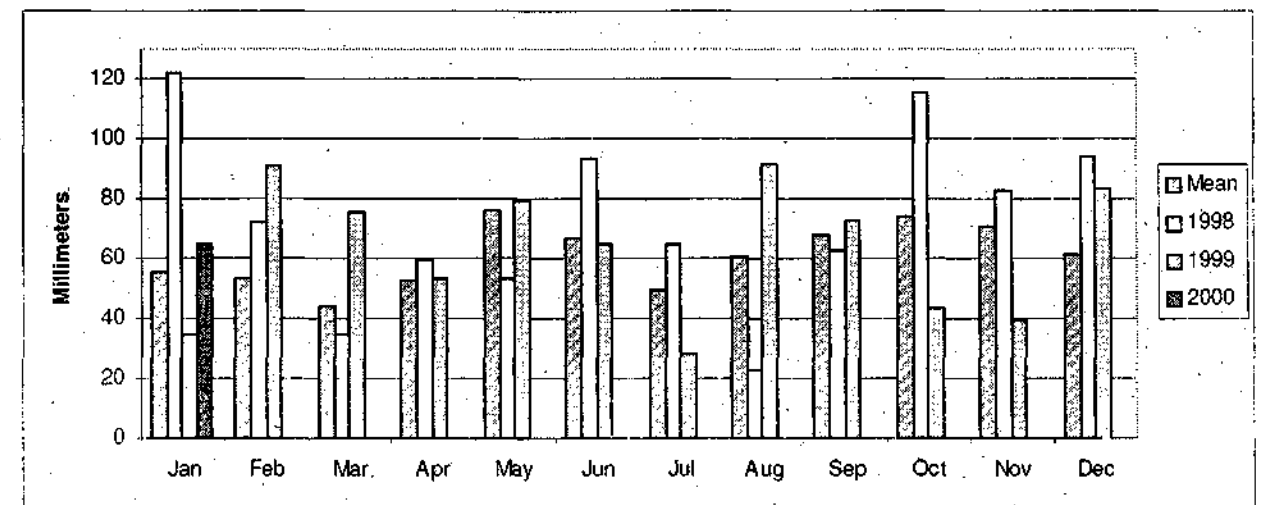
Contact for seniors is Dawn Snelson on 97046852.

Important date to remember - 14th June 2000 - Clover Cottage Dinner.

Court Hire - Contact - Margaret Chatfield on 97072016.

RAINFALL REPORT

By Robert Cooper





November 1998 Edition

HOME

Exeloo is excellent

by Myrine Hawksworth

I feel somewhat self-conscious, standing outside a toilet in Caulfield Park reading the instructions. Fortunately they are short and straight forward and I can quickly push the button to enter the uni-sex, fully automatic, self-cleaning *Exeloo*.

I'm a little nervous about the ten minute time limit, which has been devised to deter loitering, but am reassured that I will be given a warning before the door opens automatically, if I do outstay my allotted time...

Inside, the cubicle is clean and fresh; grey-tiled floor and white-tiled walls, no litter, no dripping taps, no odour and no mess. Piped music wafts through the spacious, ventilated and well-lit cubicle.

Everything is literally automatic. The toilet paper is dispensed by the press of a button overcoming problems of excessive usage and waste being strewn around. And yes, you can push it twice if you need a little more.

And when it's time to wash up, nothing could be simpler! A fully automated wash station dispenses soap and water and then blows warm air to dry my hands. And I don't even have to flush—as I wash my hands the toilet flushes all by itself!

After I leave the Exeloo, it will clean itself automatically by spraying high pressure water and cleaner around the entire cubicle. The facility is set to do this after a specific number of uses and will also clean itself during its closed time, between 9pm and 7am.



Installed in early July, the Exeloo is the first of its kind in Glen Eira and is self-contained and fully portable. All of its functions are computer controlled, including frequency of cleaning, choice of music, lighting and lock up. These settings can be altered and depend on usage frequency which can easily be monitored by the computer system.

The Exeloo comes in response to a study of Glen Eira's public toilets last year, in which recommendations were made to maximise safety and cleanliness.
