

# Beaconsfield Banner

Vol. 9 No. 6 Published by the Beaconsfield Progress Association Inc. December 1997

NEWSLETTER CO-ORDINATOR TED HORTON 9707 1313 ASSISTANT MARGARET BOON 9707 5053 PHOTOGRAPHY PAUL COHEN 9707 2480  
ADVERTISING CO-ORDINATOR TONY RUSHTON 9707 1765 BANNER POSTAL ADDRESS PO. BOX 217 BEACONSFIELD 3807

## AURISCH - 50th WEDDING ANNIVERSARY



Margery and Peter Aurisch, of Beaconsfield celebrated their 50th Wedding Anniversary with family and friends on the weekend of the 15th November.

Margery and Peter's children, Diane, Glenda, Graham and Mandy decided that Mum and Dad needed to have a celebration. But if Marge knew then, being the wonderful cook that she is, she would try to "cook up a storm"! So the "secret" organisation began.

A week before, an advert in the local paper was inserted and Marge and Peter were pleasantly surprised that the children had acknowledged the day and that it would be really nice to have a few friends for afternoon tea. Little did they realise how many people would "drop in" for a cuppa tea. 120 people came to enjoy the afternoon and "catch up" with Margery and Peter.

Guests included their flowergirl, Heather Johnson and one of the invited guests of that special wedding day, Bob Scott. Margery and Peter had no idea that the family had contacted Bob to attend their afternoon tea and he spoke a few words about their Wedding Day.

They reflected on the Saturday about when the bridal group assembled at the Presbyterian Church, Warragul, where Margery Heather Kevan, third daughter of Mrs. Kevan, Warragul married George Richard Aurisch only child of Mr. & Mrs. G.R. Aurisch of Orbost. An article in the local paper read "... the bride looked charming in a fork of white French crepe made with a deep square neckline and a long bodice trimmed with a pin tucked yoke and bands of wide tucks round the bodice. The skirt was cut with the fullness drawn to the front and extended into a long train. The Honiton lace veil, mounted on tulle, was held by a spray of orange blossom and she carried water lilies, lily of the valley and orange blossom in her bouquet."

Photos of the Wedding day and family photos were displayed and many stories were told. A great day was enjoyed by all

## ANDREW RECEIVES BRAVERY AWARD



On 22nd April 1997, Andrew Bartlett of Beaconsfield, was body boarding with his friends Daniel Grey and Scott Collins at Koonya Ocean Beach, Blairgowrie.

The Surf was up to 2mts high, dumping on the shoreline, with a strong undertow. At the same time, Mrs. O'Neil together with her 3 children and 3 nieces were at the beach.

One niece was knocked off her feet by a wave and dragged into the water by the strong undertow. Mrs. O'Neil and Sarah, her niece rushed into rescue the little girl. Sarah pulled the girl from the surf but Mrs. O'Neil was in difficulties. Her son, Michael went to her aid but was washed out and he too was in trouble.

Fisherman, Mr. Garcia, also went to assist Mrs. O'Neil

as did a Mrs. Garner who was out walking with friends but to no avail. Mr. Garcia came out of the waves to catch his breath then went back in again.

At the time that Andrew, Scott and Daniel saw the people who were in difficulty. Daniel & Scott assisted the children (including Michael) back to the beach. Andrew then made his way to Mrs. O'Neil who was in a very distressed state. He helped to keep her afloat by rolling her over onto her back then managed to catch a wave that washed them to shore. Unfortunately Mr. Garcia was reported missing and drowned while trying to rescue others.

The Royal Humane Society of Australasia recognized 30 recipients for bravery in a ceremony at Government House on Friday 5th December. Andrew, Scott and Daniel received awards from His Excellency the Honourable James Gobbo, AC, Governor of Victoria on this day.

Scott Collins and Daniel Grey were presented with a Certificate of Merit and Andrew Bartlett the Bronze Award.

**CAROLS BY THE CREEK SUNDAY 14TH.  
DECEMBER AT BOB BURGESS RESERVE 8.15 PM.  
BRING YOUR FREE CAROL SHEET ALONG WHICH YOU WILL FIND  
ENCLOSED IN THIS BANNER.**



## STRATEGIC PLAN FOR BEAONSFIELD

A public meeting to present the draft Strategic Plan for Beaconsfield was held on October 28th with John McCaffrey and James Noy attending on behalf of the Cardinia Shire Council. The draft plan was released mid-November and is publicised to be open for comment until December 19th, however the Progress Association has asked for an extension until January to allow time for complete comments to be formulated. The strategy recommends directions for Urban Design, Residential Development, Commercial Development, Transport, Carparking and Community Facilities. Although the plan provided a good framework for the issues, the Progress Association felt there was much to add. Consequently two additional meetings have been held with Councillor

Graeme Kidd in attendance at one, to review and add suggestions.

The Strategic Plan is of vital importance to Beaconsfield as it will become part of the Cardinia Shire Municipal Plan and guide future development of the town. The population of Beaconsfield is stated to increase by approximately 8000 in the future and we should be prepared. Subdivisional plans are under consideration by the council at the moment.

The Progress Association welcomes any suggestions and invites you to join in the meetings regarding the Strategic Plan. Copies of the Strategic Plan are available to read at the milk bar and post office and further copies are available at the Shire Offices.

## THANKYOU

To everyone who came to our 50th Wedding Anniversary and made it the wonderful day it was. To anyone who helped in any way who sent cards and phone calls and gifts, too numerous to answer individually.

To our family who did a wonderful (undercover) job setting it all up. Please accept our sincere Thankyou.

Marge and Peter Aurisch.

## CONTENTS

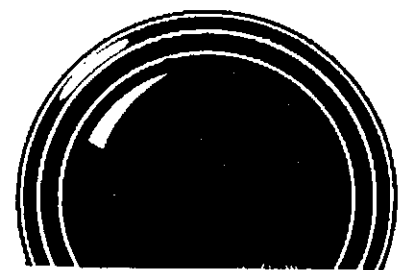
### REGULAR ARTICLES

Beaconsfield Com. Centre	11
Beaconsfield's Handyman	8
Beacy Notice Board	18
Brickbats & Bouquets	17
Church Times	10
Classifieds	23
Make and Mingle	6
Our Natural World	9
Presidents Report	3
Rainfall in Beaconsfield	8
Sport	22

### FEATURE STORIES

50th Wedding Anniversary	1
Alpaca	16
Bravery Award	1
Bonfire Report	4
Bushwalkers	23
Calisthenics	7
Letters	5
Negative Gearing	14
Officer Trading Post	16
Poets Corner	10
Strategic Plan	2
Wedding at Swan Hill	23

**CLOSING DATE FOR NEXT BANNER IS 19th. JANUARY 1998**



**PAUL COHEN  
PHOTOGRAPHY**

Commercial

Weddings

Portraits

Sports

Copy Photos B/W

B/W Dev & Printing

16 Lyle Avenue

Beaconsfield 3807

Tele: 9707 2480

Mob: 0419 004 612

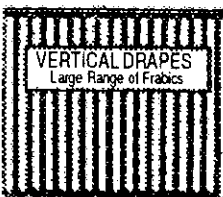
**PAKENHAM  
DOORS & SCREENS**

Factory Direct  
Sales - Service - Repairs

Pool &  
Garden Fencing



Awnings



Shower Screens, Holland  
Blinds, Slimlines, Verticals

Security  
Doors  
Flyscreens  
& Window  
Grilles

Phone: 5940 2225

Mobile: 0418 398 319

SHOWROOM FACT, 2/1 PURTON ROAD, PAKENHAM

For all outdoor  
needs from tractors,  
mowers, chainsaws,  
brushcutters,  
pumps, etc.



Spares, Repairs & Service

Contact Peter Willis

**Beaconsfield  
Mower & Tractor  
Centre**

114 - 120 Old Princes Hwy.  
Beaconsfield.

**9707 5368**



**BEAONSFIELD  
AUTO  
ELECTRICS**



3/94 Princes Hwy Beaconsfield

Telephone: 9796 1550

MOBILE 018 353 950 FAX 9796 1144

- ❖ Change Over Starter Motors & Alternators
  - \* Ultrasonic Injection Cleaning
  - \* E.F.I. Tuning & Repairs ★ Batteries
- \* Air Conditioning Service & Instalation
- \* Headlight Alignments ★ Tune - Ups
- \* Onsite Service Calls ★ Full Re-wiring

Also at:

29 Enterprise Ave.

Berwick Ph: 9707 3617



## B.P.A. PRESIDENTS REPORT

By Christina Cooper



Christina Cooper

Hello everyone. I would like to introduce myself as the new President of the Beaconsfield Progress Association. My name is Christina Cooper. My husband and I are new to the area having moved here last year delighted with the rural friendly atmosphere of Beaconsfield. We became involved with the Progress Association in January as we were concerned with the impending development. It has been a delight to meet and work with the members of the Progress Association and I am looking forward to the challenge to serve the community well in the coming year.

The AGM of the Progress Association was held on October 28th in conjunction with a public strategic planning meeting. I would like to thank Tony Rushton, Willem Boon, Ted Horton, Paul Cohen and the members of the 96/97 committee for the

work they have done. New officers were elected as follows; President Christina Cooper, Vice President Tony Rushton, Secretary Glorraine Hardy, Treasurer Maurice Potter, and Banner Co-ordinator Ted Horton. The General Committee remains the same except for Paul Cohen retiring, with John Byron and Lisa Edwards resigning earlier in the year.

The year has been very busy for the Progress Association in regards to new development. Council has not voted on the Roche rezoning application as yet. The Progress Association withdrew its objection to the Pink Hill development after our concerns were met and addressed. Many thanks to Joy Bishop for all her hard work. A special thanks also to Rob from Beakys Bakehouse for the many suppers he has supplied.

Please note that work is continuing on the draft Beaconsfield Strategic Plan and we appreciate any input from the community because this is Your Plan to help guide development in the coming years.

I would like to wish everyone a Merry Christmas and a Joyous and Prosperous New Year.



Above:- New Committee of the Progress Association. L-R Maurice Potter (Treasurer), Joy Bishop, Willem Boon, Kath Clarke, Mary McGrath, Glorraine Hardy (Secretary), Ted Horton (Banner Newsletter Co-ordinator), Graeme Taylor (Public Officer), Tony Rushton (Vice President) Christina Cooper (President) and Robert Cooper. Absent Peter Willis and Netti Abeling.

President Christina Cooper Ph. 9707 1005  
Secretary Glorraine Hardy Ph. 9796 1361



**Akoonah  
Park  
BERWICK**

**Produce, Trash &  
Variety Market**

**EVERY SUNDAY**

Opens 8.30am. to 1.30pm.

*Family Market*  
*Free entry*

Phone Bookings on  
**9796 1455**

## Keogh's Pharmacy

OPEN 7 DAYS A WEEK

Mon. - Fri. 9am. - 9pm.  
Sat, Sun. 9am. - 6pm.  
Public Hol. 9am. - 2pm.

Public Fax Service 9796 1645  
for

**HOME DELIVERY**

9707 5187

Agent for:  
MEDIBANK PRIVATE  
A.N.A.  
LATROBE  
YARDLEY COSMETICS  
CONSTANCE CARROL  
AUSTRALIS  
FRENCH PERFUMES

Invalid Equipment for Hire  
or Sale.  
Ear Piercing  
Pregnancy Testing  
Photocopy Facilities  
Fax Facilities

Agent for: KODAK

24 exp film \$7.95

Reprints 1/2 Price for 10 or more

1/2 price Enlargements : 20 x 25cm

Shop 2/16 - 24 Princes Highway  
BEACONSFIELD

## BONFIRE NIGHT AT BOB BURGESS RESERVE

*What a flaming success !*

Once again the Community of Beaconsfield turned out in their hundreds on Cup Eve Night, Monday 3rd November, to watch the giant bonfire burn and the fireworks fizz and crack.

The night air was still with a hint of chill. The band struck up some old favourite tunes and people soon gathered on the bank chatting excitedly about proceedings to follow on the grassy flat ground below. Carefree, young children chased and raced around while Mums and Dads tackled the serious business of which hamburgers and sparklers to buy.

Soon after 8pm, CFA Captain Ron Woodfine and his tireless team of fire fighting volunteers lit the fire. Very quickly darkness turned into light as flames licked as high as the tallest tree and chill turned into warmth as the radiant heat roasted the closest onlookers. Then, two rockets splashed a stream of sparkling stars across the dark night sky above. The

fireworks had begun and every roman candle, banger and rocket drew a loud ooh and loud ahh from the youngsters on the ground. The finale was marked with a succession of loud crackers high in the sky and a cascading curtain of showering sparkles below. Applause was instantaneous from the awe struck audience in attendance.

A firm tradition that Beaconsfield looks forward to every year, we have the following people to thank for this years magnificent effort..... Our local traders who very generously sponsored the fireworks display. Southern Cross fireworks for putting it on. The CFA who ensured safety for all including the fire after. Willem Boon of the Progress Association who actively organised everything. The Rotary Club for their barbecue and bangers and for Council giving permission for it all to happen.

Finally, thanks everyone for material for the fire, it soon burnt away !



Mitchell McGill  
and his father Glen

**LC**

- ★ LAWNS CUT
- ★ RUBBISH REMOVED
- ★ RIDE ON AVAILABLE
- ★ FULLY INSURED
- ★ COMPLETE GARDEN CARE
- ★ WEED CONTROL



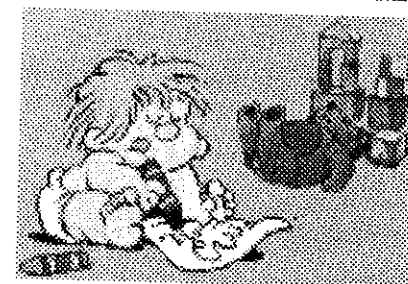
Mobile 015 518 256  
Phone(03) 5996 9577

PROMPT - RELIABLE SERVICE SEVEN DAYS A WEEK

## BEACONSFIELD CHILD CARE AND EARLY LEARNING CENTRE

6 Stella Street Beaconsfield

Accredited by the National Childcare Accreditation Council



### CHILD CARE FEES

<b>FULL TIME</b>		
WEEKLY MON.-FRI.	\$125.00	PER CHILD
<b>PART TIME PERMANENT</b>		
DAILY:	\$25.00	PER CHILD
HALF DAY SESSIONS	\$12.50	PER CHILD
<b>SCHOOL CHILDREN</b>		
BEFORE/AFTER SCHOOL CARE AVAILABLE		
PER TRIP	\$8.00	PER CHILD

**GOVERNMENT ASSISTANCE AVAILABLE**

PROPRIETOR LINDA PETTIGREW  
REGISTERED NURSE, MIDWIFE, MCHN QUALIFICATIONS  
PH. B.H. 9707 5532 OR A.H. 041 951 2243

## LETTERS

To the Editor,

Beaconsfield park - that land located immediately south of the Beaconsfield tennis courts - is an accurate symbol of the lack of responsible attention given to it by those parties who have accepted appointments to manage it.

Beaconsfield Park desperately needs extensive tree planting activity so that there will be established young trees in the near future to replace trees that are close to senescence. Barriers are needed to prevent continued driving of motor vehicles through the park on what is supposed to be a pedestrian path. This pedestrian path needs upgrading so that it is useful in the wettest months of the year. The tributary creek which flows under the Beaconsfield-Emerald Road into the park and into Cardinia Creek could be better landscaped.

Beaconsfield Football Club and Beaconsfield Tennis Club are both organisations incorporated under the Crown Lands (Reserves) Act 1978.



and as such, they are expected to manage Beaconsfield Park, of which their club's grounds are a part. Thus it is both a strong but fair statement to say that these two clubs have both been negligent and irresponsible because of their lack of attention to Beaconsfield Park, even though they were established so that they could acquire the funds needed to tender the Park as well as their own sporting interests.

If there is any doubt the laying of such blame onto these clubs, then the reader is encouraged to consult with Wayne Malone, Manager of Crown properties unit. (Port Phillip region), Department of Natural Resources and Environment, 49 Spring St., Melbourne.

Mrs. C. Atkins. Beaconsfield

To the Editor,

Dear Sir,

It is with grateful thanks I applaud members from the staff of the Banner in coming to my assistance when friends were needed.

There is always help at hand if people were only made aware. In this busy, rushing world it is wonderful to find people can still spare time to help.

Again thank you, Sincerely J Armitage.

**KEVIN SHEEAN**

**Masseur**

RELAXATION, SPORTS & REMEDIAL  
AROMATHERAPY STEAM TUBE  
BY APPOINTMENT ONLY  
(03) 9707 2288



## BEACONSFIELD NATUROPATHIC CLINIC

(REG)

New Location at 5 Goff Street Beaconsfield  
(Just off Princes Hwy) Melways 111 J12 (4th on right.)

9th Year of practice in Beaconsfield using safe  
natural remedies only. T.G.A. REGISTRATION

## PETER N. HANSEN

N.D. DIP. HOM. C.I. A.T.M.S.  
NATUROPATH HOMOEOPATH IRIDOLOGIST

Member of Australian Homoeopathic Association.

Member of International Federation of  
Homoeopathic Physicians.

Member of the Australian Traditional Medicine Society

SPECIAL INTERESTS:- Childrens Problems.  
Emotional Illness.  
All Acute or Chronic Diseases.

Tel/Fax 9707 1214 For Appointments

## MAKE AND MINGLE -

Its been a great year.

By Ann Taylor



Ann Taylor

We started this year with a number of new crafts- jewellery making, necklaces, earrings and bracelets, also hanky boxes made from calendars or greeting cards- Bev's large teddy box was really beautiful and admired by all. Greeting card making continued and Yvonne was teaching embroidery with colonial knots and ribbon embroidered needlecases while other ladies were working on patchwork and cross-stitch.

At the end of February, we went to Suval Hobby Ceramics at Pakenham for a lunch and to learn new techniques combining ceramics with craft. It was a really interesting day. Thanks to Bev Smith of Suval Ceramics.

Early in March, the leaders of the group joined with other Baptist Church group leaders for a day of sharing and learning at Balwyn North Baptist Church. We took a display of our group's craft and saw many new craft ideas.

Next year in 1998 Beaconsfield will host the craft day for Baptist church craft group leaders.



Above:- Farewell to Fred and Joyce Rudd

We celebrated Easter with Hot Cross buns and Easter crafts and attending our Easter church services.

At the end of May we visited Pakenham Baptist church Make and Mingle group which started this year and meets on a Friday, afterwards we went to Meadow Vale craft display where we saw some beautiful items.

Wednesday, 4th June was the highlight of our year when over 100 people joined in praising God at Make and Mingle's 10th Birthday. It was an opportunity to catch up with old friends over morning tea and lunch and the craft and photo display created great interest.

Later in the month we took Make and Mingle to the local libraries at Pakenham, Narre Warren, Cranbourne and Endeavour Hills. Each display was a little different and the beautiful craftwork was enjoyed by everyone.

In August we were sad to farewell Fred and Joyce Rudd, our pastor and his wife, who have lived in Beaconsfield for 8 years. The ladies combined to make handmade gifts.

At the end of 3rd term we saw a display of recycled wooden items, including trays, shadow boxes and boxes.

The ladies painted and decorated with decoupage these items and they have been most successful and varied. We also learnt teddy bear making and dressed little wooden dolls. Christmas decorations and card making are still popular.

Cont. on  
page 7.

## WHAT IS CALISTHENICS?

Calisthenics is unique to Australia and is a fascinating hybrid of sport and art. As a sport it encourages physical development and co-ordination, self discipline and team spirit.

As an art it develops an appreciation of music and rhythm, the beauty of line and composition and the excitement of stage presentation.



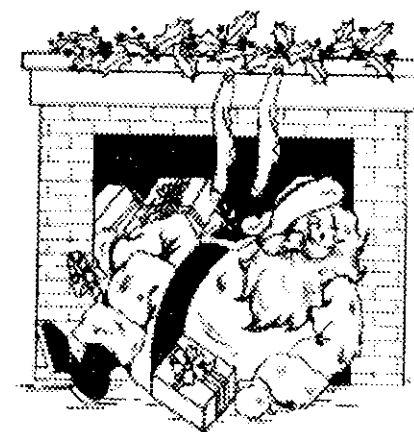
It is a team sport for girls that involves teams of eight or more girls working together to perform choreographed routines to music in exercises such as Freearm - similar to Gymnastics Floor Work, Club swinging and Rod exercises - similar to baton twirling, Folk Dancing - learning other nationalities' folk dances, Aesthetics - similar to ballet but not on toes, and Song and Dance- singing and drama.

Calisthenics covers girls from the ages of 3 to 93 years of age. If you are interested in the sport of Calisthenics then please contact either Denise Rossetti on 97074531 or Sue Bryant on 97962351

## MAKE AND MINGLE

Cont. from page 6

Thank-you to Kaye Cohen from the Banner, who took photos of the group. Praise God for His blessings this year and the 40-45 ladies who come each week to MAKE craft and MINGLE for a chat. Thank-you to all who share their craft talents and help in the kitchen and creche. Next year, we will return on Wed 4th February at 10am. We will be painting and decorating some new craft items and making tassels and other Crafts. SEE YOU THERE for craft or a chat or a cuppa.



## REFLECTIONS HAIR DESIGN

PH. 9707 3277

Inge and Pete would like to wish all their clients, friends and the people of Beaconsfield a Merry Christmas and a Prosperous New Year.

They would like to thank all their clients for the support throughout 1997.

Reflections Hair Design will be trading as follows over the Christmas break:-



Closed	Thursday 25th. December 1997
Closed	Friday 26th. December 1997
Closed	Saturday 27th. December 1997
Open	Tuesday 30th. December 1997
Open	Wednesday 31st. December 1997
Closed	Thursday 1st January 1998
Trading as normal from Friday 2nd Jan. 1998	

Merry Christmas and a Happy New Year

# Goodfellows

**YOUR LOCAL SUPERMARKET AND BOTTLE SHOP IS OPEN THE FOLLOWING TIMES**

	SUPERMARKET	BOTTLE SHOP
MON - WED	8.00AM - 7.30PM	9AM } Till
THURS - FRI	8.00AM - 8.00PM	8AM } Closing
SATURDAY	8.30AM - 7.00PM	10AM }
SUNDAY	9.30AM - 5PM	10AM - 5.00PM

**EFT POS & FAX SERVICE AVAILABLE**

Look out in your mail box for our weekly specials in groceries and liquor

Owned and operated by Has and Kittie Patel who live with their family in Beaconsfield.

## Cheers

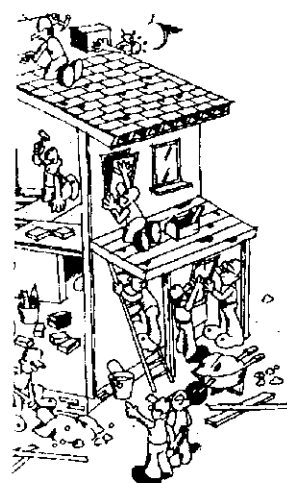
## BOTTLE SHOP

20 Princes Highway  
Beaconsfield 3807

**PH. 9707 1092**

## GREAT DEALS

ON ALL YOUR HOME IMPROVEMENTS NEEDS



- ★ Redgum Sleepers
- ★ Western Red Cedar W'boards.
- ★ Baltic Pine W'boards.
- ★ Jarrah & Karri Flooring.
- ★ Canadian Oregon
- ★ Treated Pine Boards & Posts.
- ★ Large Range of External & Internal Doors.
- ★ Timber Decking (various species)

DELIVERIES TO ALL AREAS DAILY

*So for Friendly & Efficient Service Call in and See the Boys at*

**VAN STEENSEL TIMBERS PTY. LTD.**

LOT 1, PRINCES HIGHWAY, OFFICER 3809  
or phone

**(03) 5943 2371**

Fax: (03) 5943 2284

## BEACONSFIELD'S HANDYMAN

By Phil Collins

Bartering is a very old practice - payment in kind rather than cash. Handymen are sometimes placed in that unenviable situation of being offered rewards other than the recognised currency.

Several weeks ago a certain handyman was summoned to a house where a door had stuck to the floor and was nearly impossible to open. After carrying out the repair it was agreed that payment would be made with a cream sponge with passionfruit icing in lieu of cash. After two or three days a telephone call indicated that the sponge was ready and the unnamed "H'man" sped to collect it.

If this practice is allowed to

spread - and heaven forbid if every "H'man" accepted cream sponges the affects would be quite serious. 1. Manholes would have to be enlarged! 2. Ladders would have to be reinforced! 3. Overalls would be strained, particularly at the waist!

Then there is the "scratch my back, I'll scratch yours" method of bartering. This is based on the idea "I'll paint your porch if you grease my gantry".

Personally I favour the cream sponge method but as usual there is a down side. Some of those with the most urgent repairs: flaking paint, tatty tiling, droopy doors just cannot bake a sponge!



Above: Phil Collins who can be contacted on 9707 4225.

## BEACONSFIELD'S RAINFALL

By Robert Cooper

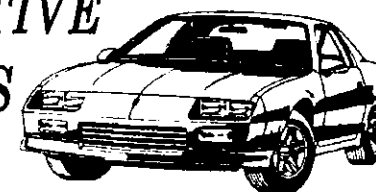
I'm pleased to say we had a wet one last month as the graph clearly shows. For only the second time this year we have exceeded the monthly average. The above average result for November was due entirely to 49mm (1.93 inches) we had on November 10. A welcome relief for those of us relying on tank and dam water to see us through the coming summer months.

The Met is forecasting the hottest, driest summer since Ash Wednesday and we do

live in a reasonably fire prone area. Make the effort to remove woodpiles from near the house, clear the gutters and have a fire plan ready. I would urge everyone to take extra care to conserve water as much as possible over the coming months. In the next issue I hope to be listing some hints and tricks to help you save water around the home. Cheers.

See Graph on page 9.

## BEACONSFIELD AUTOMOTIVE SERVICES



**Rob Robinson**

**Qualified Motor Mechanic  
Licenced R.W.C. Vehicle Tester  
& Repairer**

**Factory No. 1  
94 Princes Hwy.  
BEACONSFIELD**



Lic Vic Roads  
Vehicle Tester

**PHONE: 9707 4468**

## Beaconsfield Lodge Motel

Stay in one of our new or completely refurbished and renovated units



Our 12 units feature double, twin or queen size beds and a two brm family unit.

Your Hosts: Robin & Kathleen Best

1 Souter St.  
Beaconsfield

**Budget Motel Chain**

**(03) 9707 1454**

## OUR NATURAL WORLD

(Written by Peter Hansen)



Peter Hansen

**FASTING.** The very word conjures up pictures of weakness, starvation and sacrifice, which puts most people off the idea very quickly.

However properly handled, fasting is an ancient well proven method for cleansing the body and eliminating the build up of toxins. It is a means to quickly re-instate health to an ailing body.

Socrates and Plata, two of the greatest Greek philosophers and teachers fasted regularly for a period of ten days at a time. This increased their mental and physical efficiency, contributing to their wonderful contributions to the world. Pythagoras was another Greek philosopher and a regular faster. He fasted for forty days before taking an examination at the University of Alexandria, and he required his pupils to fast for forty days before they could enter his class. A drastic endurance condition perhaps, but he felt that they would be at peak condition to absorb knowledge after the fast.

The ancient Jews regularly practised fasting and this was mostly involuntary. Moses fasted for forty days and nights. The vitality of the English race was well known even then. As well as the

longevity of the members, many of the great Hebrew Prophets such as Abraham, Isaac, Moses, Amos, Hosea, Rehoboam, Job etc lived to be over 120 years of age.

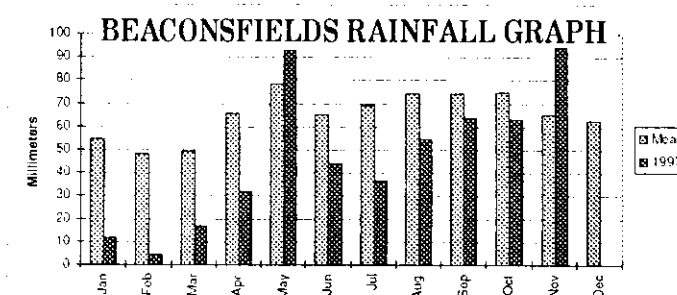
Among the early Christians, fasting was among the rites of purification. Saul of Tarsis and St. Paul, fasted regularly. The remarkable spiritual, mental and physical ascendancies of St. Paul are familiar to all Christians and students of theological history. All of the apostles fasted regularly and even today the catholic church has its fast days.

The 40 hour famine fast is well known to modern Australians as a means of raising money for starving peoples around the world.

The writer Mark Twain tells a true story of the ship "Hornet" burned at sea in 1866. The crew and single passenger (A tubercular case) were adrift for 25 days of pitiless starvation, and when rescued were found to be "Hearty and strong, even the ones who had been sick to start". The consumptive passenger had even improved according to accounts of the time.

Interestingly fasting does not affect the brain and nerves, they remaining intact during it. The blood holds near normal too. Temporary muscle weakness is not a sign of loss of vital resistance and basic strength remains intact.

A fetid breath and coated tongue merely reflects the foul condition of the digestive organs. *Cont. on page 17*







## Berwick Motor Body Repairs

PTY. LTD.

SPECIALISING IN  
INSURANCE SMASH REPAIRS  
FOR ALL MAJOR INSURANCE COMPANIES

Using Universal Car Bench  
Dedicated Jig System  
European Paint Baking Oven

24 HOUR TOWING SERVICE  
**(03) 9796 1199**

BODY SHOP  
**(059) 432 343**

PRINCES HIGHWAY  
OFFICER, 3809

COURTESY CAR AVAILABLE



### CHURCH SERVICE TIMES

#### ANGLICAN:

Berwick. Peel Street  
Sunday. 8.00am; 9.30am; 11.15am

Upper Beaconsfield.  
Sunday. 9.30am; 7.00pm.

#### BAPTIST:

Beaconsfield. Old Princes Highway  
Sunday. 10.30am; 7.00pm.  
Sunday School 9.15am.

#### CATHOLIC:

Berwick. High Street.  
Saturday. 6.00pm  
Sunday. 9.00am; 10.30am; 6.00pm.

#### SALVATION ARMY:

Berwick Old Anglican Church Church Street  
Sunday 10.00am.

#### UNITING:

Berwick. High Street.  
Sunday 10.30am

### POETS CORNER

#### IF

*If my love could bring global peace, I'd share it.  
If my love could bring folks ease, I'd give it.  
If your love could bring me peace, I'd have it.  
If your love could give me ease, I'd take it.  
But what IS love?*

*Do we give or do we take?  
Does it mend, or does it break?*

Iris Lewis



# BEAconsfield COMMUNITY CENTRE

Postal Address:-  
P.O. Box 2  
Beaconsfield. 3807



Left:- Part of the old Pakenham Library arrives on the site to become the future Beaconsfield Community centre.

1991/92 saw the birth of the Beaconsfield Community Centre Inc through the amalgamation of the Beaconsfield Community Centre Planning Group and the Beaconsfield Community Group.

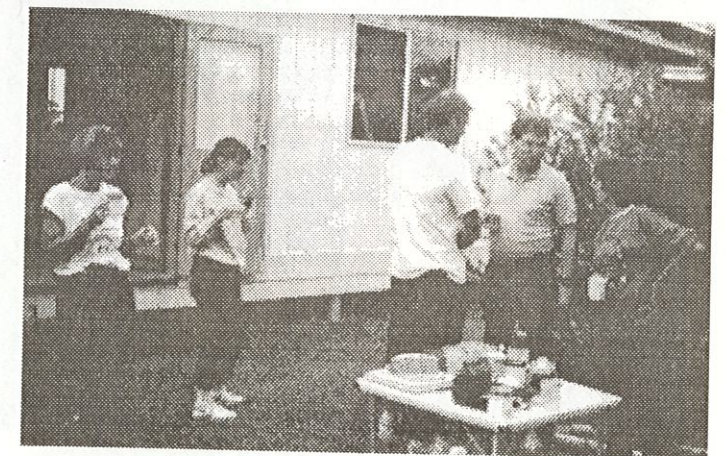
This historical move took place in November 1991, so that a Committee of Management for the new Beaconsfield Community Centre could be established. The Old Pakenham Library was relocated to the site and builders remodelled the building, by adding a new room.

Many local people spent many hours painting and landscaping. On the 24th May 1992 the Community Centre was officially opened.

Playgroup. Pre-Kinder.

and ToyLibrary were already well underway and had been operating elsewhere under limited conditions. New interest groups were quickly established. Midway group was very quickly operating with many locals enjoying new friendships made at the centre.

During the past 5 years the centre membership has grown. New classes and courses have been established.



Above:- Volunteers take a coffee break from painting. L to R- Kathy Hunter, Karen Popovits, Mr. X, Ray McCormick and Gwen Neve.(Can anyone identify Mr. X?)

Eastern  
Energy

Car Park

Beaconsfield  
Com. Centre

Scout  
Hall

Beaconsfield Avenue

Souter Street

**Ph. 9707 3449**



## SOME OF THE MANY ACTIVITIES OF THE COMMUNITY CENTRE.

The centre is available to everyone in the community. We offer regular interest groups, parent and children activity sessions, courses for both adults and children, and a meeting place for local groups.

We hope to "break the ice" and introduce people to community learning. It may not be the classes that we offer that are important to one particular individual, just the fact that they are involved in the community and interacting with others.

Community support are two small words that describe a large variety of issues and that is why a local Community Centre is so important. We can support the community in many ways. Whether we get you fitter physically, mentally or emotionally we have something to offer everyone. Where would a person go for this support if not to a Community Centre?

If you need a cuppa and a chat, a chance to try something new, need a break from the kids, some information about what's happening in the district or you would like a venue to start a new group, please come to your Community Centre.

Remember there are no strangers here, simply friends you haven't met before.

### Intro to Computers

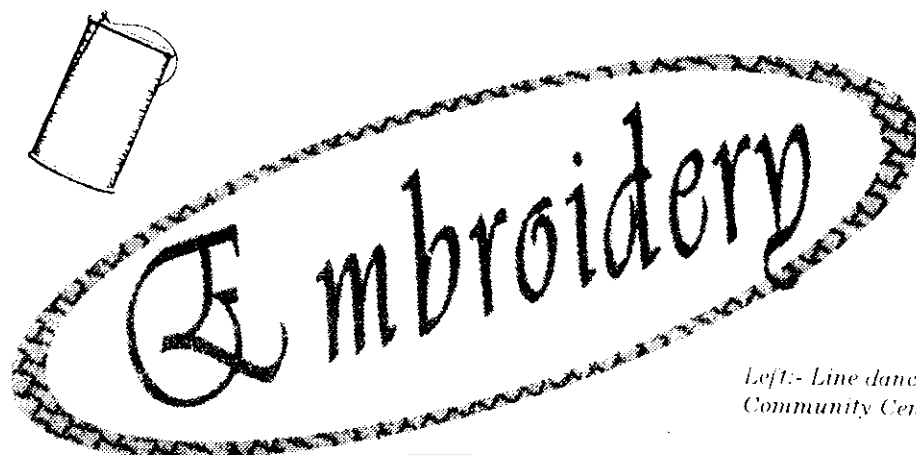


Midway held the Annual Melbourne Cup Day Luncheon with their usual enthusiasm. Members enjoyed entertainment "Home among the Gum Trees" provided by L-R Jean, Gwen, Grace, Brenda and Doreen.

**REMEMBER THERE ARE NO STRANGERS HERE, SIMPLY FRIENDS YOU HAVEN'T MET BEFORE.**



Left:- Line dancing at the Community Centre.



We are planning a new activity for each term, so look for our term program in your mail box in late January.

Term programs are also available from the Beaconsfield Newsagency and other Beaconsfield shops. You can also be included on a mailing list by ringing the centre and leaving your name and address.

The Staff and Committee of Management would like to wish you all a peaceful Christmas and safe holidays. Thankyou for your support throughout the year. Thankyou to our wonderful volunteers - we couldn't manage without you.

We look forward to your friendship during the coming year.



## NEGATIVE GEARING FOR TAX PURPOSES

Many people have heard the term "negative gearing for tax purposes", which usually conjures big tax benefits and healthy tax refunds.

The term negative gearing was commonly used in the property boom of the 1980's when lending institutions, particularly banks lent a high proportion of the purchase price and sometimes up to 100% of the purchase price plus expenses of acquisition

e.g. Stamp duty. Due to the relatively high sums of monies borrowed and depending on the prevailing interest rates, a property was deemed to be negatively geared when the interest paid on the loan exceeded the rental income from the property. After claiming deductions for other deductible expenses e.g. Rates, Taxes, Insurance, Repairs, Maintenance costs etc. the net rental loss is

claimed as a tax deduction for tax purposes. Depending on the rate of income tax, the tax benefits (refund) will usually equate to 20% or 34% or 47% of the rental loss depending on a taxpayers taxable income. Accordingly, high income earners obtain the better tax benefit due to their higher marginal tax rate.

An investor should only negatively gear a property investment on the basis that

the capital appreciation will exceed the after tax returns on alternative investments. eg. Interest receivable on Bank deposits. The calculation should also take into account any potential capital gains after deducting inflationary (CPI) effects.

Negative gearing is not limited to property purchases and can also be used for purchases of shares on which dividends are received. The volatility of the share market as demonstrated recently and the stagnation in property prices must be taken into account in assessing capital appreciation of shares and properties.

Before any negative gearing, you should prepare a cash flow forecast to ensure that all net expenses on the investments together with loan repayments can be adequately serviced from your income and/or cash reserves. Getting into arrears on loan repayments will often result in the lending institutions selling the property given as security sometimes at a lesser figure than you may think it is worth, resulting in capital losses.

An accountant will assist you in projecting the tax position for losses on negatively geared properties and shares; potential Capital Gains tax and most importantly whether your cash flow will support the negative gearing proposal.

GRAEME J. TAYLOR. A.C.A.



## BEACONSFIELD GARDEN SUPPLIES

100 Old Princes Hwy. Beaconsfield

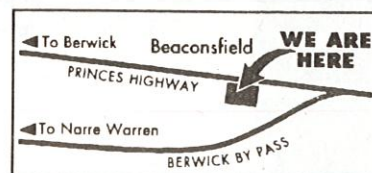
*To all our valued Customers we would like to wish you a Merry Christmas and a safe and Happy New Year, From all of us at Beaconsfield Garden Supplies.*



*If you are looking for something to do over Christmas and you decide to do your garden, don't panic, we are OPEN every day except Christmas day.*

*We will have different specials over Christmas. See specials board at front gate.*

Ph.



## BEACONSFIELD TIMBER & HARDWARE



A.C.N.004 680 148

Lot 2 Beaconsfield Ave. Beaconsfield

Phone 9707 5055

Fax 9707 3279



*Gerald and staff at Beaconsfield Timber & Hardware would like to take this opportunity to wish you and your family a Merry Christmas and all the very best for the New Year.*

*We thank you for your custom during 1997, and look forward to doing business with you in the New Year!*

*The only changes to trading are as follows:*

*We close at 3.00pm. on .....24th December*

*Closed.....25th December (Thursday)*

*Closed.....26th December (Friday)*

*Closed.....27th December (Saturday)*

*Closed.....1st January (Thursday)*





## OFFICER TRADING POST



Tony and Jan Lacunes have been trading in furniture in Officer for six years now. Tony is well experienced in furniture sales having a father who traded in Cockatoo, Garfield and Pakenham over a number of years. Many will be familiar with the old Garfield Theatre and the old Pakenham Theatre shops. They were both run by the Lacunes.

Over six years in Officer, Tony and Jan have built up a very good reputation in quality second hand and new furniture. Regular customers come from as far afield as Cranbourne and from throughout Gippsland. The range spread over 6000 square feet of shop floor offers something for everyone. The standard of merchandise has now improved greatly with the introduction of a range of new Pine furniture, featuring chests of drawers, desks, book cases, T.V. units and wardrobes etc. In the entrance are some fine displays of hardwood dining settings with a sturdy classic look.

Located so prominently on the Highway this store is proving very convenient for locals who haven't the time to drive far for their furniture needs. Tony and Jan have been in the business for so long now that they enjoy a lot of repeat trade and new generations of newly weds are

coming to buy from where their parents have bought before. People have come to know and trust Officer Trading. Lay by and Eftpost make things so easy for prospective buyers.

The style of furniture they offer is timeless and appeals to young and old alike with emphasis often on the natural colonial look. With free delivery to most areas and friendly attentive service The Officer Trading Post is a good place to look for your next purchase.



## BEACIE SERVICE CENTRE

SERVICING & MECHANICAL REPAIRS TO  
ALL TYPES OF VEHICLES INCLUDING:

- \* 4x4 & Light Commercial
- \* Tune-Ups
- \* Brake & Clutch
- \* Front End Work
- \* Exhaust Systems
- \* Transmissions
- \* Motors



Licensed Roadworthy  
Tester



MAJOR & MINOR WORK

Contact Gary  
or Ross

BEACIE SERVICE CENTRE

122 PRINCES HIGHWAY BEACONSFIELD

- All Guaranteed -

(03) 9796 1401

## OUR PAC-ATTACK!

A memorable and return visit to Central Tilba, New South Wales in 1995 revealed something that would change the events of our lives - an alpaca shop! It was from this that we discovered the alpaca and it is true, there is love at first sight!

The Peruvian Indians domesticated the alpaca over a thousand years ago and they were valued then as today for their fine soft fleece. When the Spanish arrived in South America these skills and alpaca heritage were lost. In the last fifty years the selective breeding of alpaca in Peru has seen the industry re-establish.

The alpaca were first imported to Australia in the late 1980's from Peru and

Chile. They are part of the camelid family, the llama also being a camelid but more known as a pack animal than for its fibre. Australia has now attained the largest alpaca population outside of South America.

Our interest was further kindled by obtaining information from the Alpaca Association, which produces regular newsletters and the Alpaca Australia magazine. Subsequently we became a member.

Thinking it was one of those phases, it dawned on us pretty quickly that this could become reality and hence the search for the 'end product' began. We attended an 'Open Day' in Kyneton and following further interstate travel we assisted a vet that was the

'keeper' of a large alpaca herd in Coonawarra, South Australia (not only grapes over there!). This 'hands on' adventure probably sold us.



Cont. on page 20.

Above:- "Jeddah" "Ummmm...you haven't forgotten to feed me!"

## OUR NATURAL WORLD

Cont from page 9

Diabetics and hypoglycaemics should not fast, and a lengthy fast should always be under the supervision of your health professional. A curious feature of fasting is that after 24 hours, the usual hunger disappears, and it actually becomes easier.

Living in the "fast" lane, can be healthy after all!

## BRICKBATS AND BOUQUETS

Brickbats - to the group of young people at the Bonfire night who gave problems to the CFA trucks trying to leave.

Bouquets: To Beaconsfield Goodyear Tyre Service for helping a lady TWICE with a flat battery in her car.



Beaconsfield Video Library would like to wish you all a Merry Christmas. A Happy and safe New Year. Thank you for your continued support. During Daylight saving we are now open till 10pm. Friday and Saturday nights.

SCOTT HOLDINGS PTY LTD  
For prompt, friendly service with

**BOBCAT  
BACKHOE  
TIPPER AND  
RETAINER WALLS**  
TELEPHONE (03)  
9707 1685

**0412 356385**  
**Stuart Scott**  
PAYNE RD. BEACONSFIELD

• GET FIT •

*Sensational  
Special*  
12 Months Full  
Membership  
**\$295**

NEW EQUIPMENT  
NEW CIRCUIT

OPEN 7 DAYS

**BEACONSFIELD SQUASH &  
FITNESS CENTRE - (03) 9707 2929**

29 Wood Street, Beaconsfield

If you have a Legal Problem call -

**WOLLERMAN  
SHACKLOCK**

BARRISTERS & SOLICITORS

We provide a full range of Legal Services including

- \* Subdivisions \* Wills and Probate \* Commercial Law
- \* Motor Vehicle Accidents \* Land Development \* Legal Services for Small Businesses
- \* Fixed Price Conveyancing - Sales and Purchase \* Commercial Law including Traffic Offences
- \* 24 Hour Service \* Family Law, Adoption and De Facto Spouses

**FIRST FLOOR, 8 GLOUCESTER AVENUE, BERWICK**  
**Telephone: (03) 9707 1155, Facsimile (03) 9707 4834**

## THE STEERING JOINT

WE AIM TO BE THE BEST AT WHAT WE DO

BECAUSE YOUR CAR DESERVES PEOPLE WHO CARE

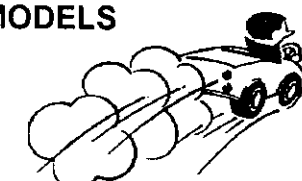
- ★ FULL MECHANICAL REPAIRS
- ★ SERVICING OF ALL MAKES & MODELS
- ★ ELECTRONIC TUNING
- ★ BREAK & CLUTCH REPAIRS
- ★ FRONT END REPAIRS
- ★ WHEEL ALIGNMENT
- ★ WHEEL BALANCING ON & OFF CAR

FREE PICK UP & DELIVERY LOCAL AREA

EVERY VEHICLE SERVICED AT  
THE STEERING JOINT  
IS DETAILED FREE! OF CHARGE

YOUR CAR WILL LOOK AND FEEL GREAT

**ALL WORK GUARANTEED**



FREE  
NO OBLIGATION  
QUOTES  
12 WOOD STREET  
BEACONSFIELD  
PHONE 9707 3393

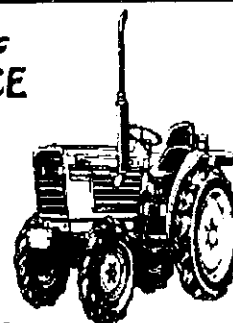


**BEACY'S NOTICE BOARD****WINDOW CLEANING**

Domestic &amp; Commercial

**JOHN PLOWMAN**

17 Years Experience

**5944 3969**MELALEUCA LODGE  
CNR BRUNT RD., PRINCES HIGHWAYModern accommodation  
including deluxe spa unitsWedding Receptions  
Conferences  
FunctionsContact Neilma or Graeme  
for Inspections or Bookings **9796 1044****MODEL TECH &  
ELECTRONIC SERVICE**TELEVISION, VIDEO, HI-FI, VIDEO CAMERA &  
MICROWAVE OVEN REPAIRS ♦ HOBBY SUPPLIES  
ANTENNA & SATELLITE DISH INSTALLATIONShop 1, No 4 Princes Hwy Beaconsfield,  
Ph: 9768 9191 Mob: 015 568 499  
Prop, Barry Nugent**BEACONSFIELD  
PHYSIOTHERAPY  
CLINIC****Nathan Feldman**  
B. Sc. (Monash) B. App. (Physio)**Vincent Chan**  
B. App. Sc. (Physio.), M.A.P.A.  
Grad. Dip. in  
Exercise For Rehabilitation  
Physiotherapist46-50 Princes Highway  
Beaconsfield 3807PH: 9796 2833  
AH: 018 538 198**Dr. Robert A. Panjkov**  
B. D. Sc. (Melb.)**DENTIST**Unit 4 87 Wood Street  
Beaconsfield 3807**Ph. 9707 3508****GRASS SLASHING &  
FARM MAINTENANCE****Bryan Park**  
Phone: 9707 2007  
Mobile 0411 402 110

FREE QUOTES

**ACACIA RISE ALPACA FARM**

Phone 9707 5589 / Fax 9768 9100

**Kaye Chapman**

'Breeders of Beautiful Black'

P O Box 173 Beaconsfield Vic 3807

**ALLIED BUILDING  
SERVICES**BUILDING ADVICE  
BUILDING CONSULTANTS**BUILDING PERMITS**76 Main Street, Proprietor Bushy Miles  
PAKENHAM 3810  
Telephone 5941 4355 Fax 5941 4400**BEACY'S NOTICE BOARD****GRAEME TAYLOR A.C.A.  
CHARTERED ACCOUNTANT**

- \* Registered Tax Agent (E.L.S. Facilities)
- \* Registered Company Auditor
- \* Thirty years professional experience

Providing personalised financial, taxation,  
management accounting, auditing,  
superannuation and corporate secretarial services.Appointments at Oakleigh or Beaconsfield  
Okey Stopp & Taylor 9569 7516

**THE BACK VERANDAH**



ANTIQUE  
FURNITURE  
RESTORATION

FRENCH POLISHING  
WOOD TURNING  
GENERAL REPAIRS

ROB & ANNETTE PH: (03) 5943 2526 ALL HOURS  
MOBILE: 041 758 8908

**BEACONSFIELD  
PLUMBING SERVICES**

R.A. &amp; C.J. HORE PTY. LTD. A.C.N. 005 398 701 Lic. No. 23339

**YOUR PLUMBING PROFESSIONALS**  
Domestic \* Commercial \* Industrial  
SERVICING ALL SOUTH EASTERN SUBURBSRoss & Cheryl Hore  
6 Horner St.  
Beaconsfield 3807Ph. 0412 606 222  
A.H. 9707 2832  
Fax: 9707 2832**ELECTRICAL CONTRACTOR**Domestic, Commercial,  
Industrial  
installations and repairs**PETER STEELE - R.E.C. 8772**Phone 9707 4906  
Mobile 0418 392 370  
23 Hudson Street, Beaconsfield.**TYREPOWER****RAY LAWN**  
Proprietor**BERWICK TYREPOWER**  
Enterprise Ave., Berwick, Vic. 3806  
Tel 9707 3177 Fax: 9796 1836**J. M. STEERE**  
PAINTING & DECORATING  
SERVICES PTY LTD

Master Painter &amp; Decorator

**Phone: 015 316 976****LANDSCAPING / ROTARY HOEING  
GRASS SLASHING / LAWN MOWING**

- \* Large and Small areas catered for
- \* Grass pick-up or evenly scattered

Phone Graham  
**9796 1297 or 0418 563 456****OFFICER DEMOLITION YARD**

405 PRINCES HIGHWAY, OFFICER 3809

**RECYCLED BUILDING MATERIALS  
FURNITURE AND BRIC-A-BRAC  
FIREWOOD**

Open Mon., Tues., Thurs., Fri., Sat. 9.30-5.00

**PHONE 5943 2550**



## OUR PAC-ATTACK!

*Cont. from page 16.*

The vet was extremely helpful and informative and since we had little animal experience (bar chooks and ducks), it gave us valuable insight into alpaca farming.

Shortly after returning to Melbourne, we decided that this was it and we would look at the local market. This took us a bit nearer to home and a stud farm and owner that was equally enthusiastic and full of facts and figures. By this stage we were brimming with enthusiasm for the intelligent, inquisitive and graceful alpaca.

Following short deliberation we purchased our first alpacas, our 'all black package' - Delilah, a pregnant mum (hembra) and her first daughter, Jeddah. They were agisted for six months so as to give us time to arrange appropriate fencing (5 strand sheep fencing wire being all it takes) and a lease arranged for an acre off a farm that abuts one of our boundaries.

By this stage we couldn't wait till our 'new' family arrived and in early 1997 two wethers arrived (used as companion animals), shortly followed by mum and daughter and her new baby (cria), a beautiful black female, Thursday!

It is certainly an extremely rewarding experience farming alpacas.

Alpaca fibre is beautifully soft, non greasy, very warm and lightweight. It comes in 22 recognised colours from pure white to fawns, browns through to true black. It also can be readily dyed, although the natural colour range is hard to beat. Generally speaking, shearing is an annual event with females producing on average 3kg and males up to 5kg (female fibre production is lessened due to the fact that she remains pregnant most of her fertile life).

At present Australia is a breeders market but as the

numbers increase the luxurious soft, warm and lightweight fibre will be the prime product. Alpaca fibre is well sought after overseas particularly in Japan and Italy. In Australia, a co-operative has been established to accumulate the fibre produced here and to subsequently market value added merchandise.



*Above: "Thursday" - solid nine month old female.*

The breeding regime for female alpaca is fairly simple. The 'coming-of-age' is 12-15 months in age and after setting your goals for breeding characteristics and selecting an appropriate stud male (macho), it is time to arrange the date! As alpacas are induced ovulators and therefore do not come into

season, this arrangement is easy. The mating takes up to a hour and in a maiden alpaca (first time) the process is often repeated to ensure pregnancy has been achieved two weeks later (lucky male!).

During the course of the pregnancy 335 days (approximately 11 months), it is important to make sure that the pregnancy remains viable. 'Spit offs' - yes, alpacas do spit and this can be some distance too, are carried out every month with a male. Eleven months is a long time to wait and have nothing to show for it at the end! No extra care is

required excepting a knowledge of the due date so that you can be there to witness the miracle of life and as an added bonus, most alpaca give birth to their cria in daylight hours!

General maintenance of the alpaca is fairly basic. Vaccination and worming are undertaken twice yearly.

*Cont. on page 23*

**Rodney Edwards  
R.S.V. ENGINES**

**9796.1222**

### RODNEY & LISA EDWARDS

All Mechanical Service & Repairs,  
Including Brakes, Clutch, Suspension  
& Exhausts, Change over Engines,  
Cylinder Head Reconditioning.

**24 HOUR.  
TOWING SERVICE**

2/94 Princes Highway  
Beaconsfield 3807

**(03) 9796 1222**

**Bruce Clough's  
BERWICK TOWING**

**9796.1222**

### 24 HR TOWING SERVICE

1975 Princes Hwy  
Nar Nar Goon 3812  
**(059) 42 5238**

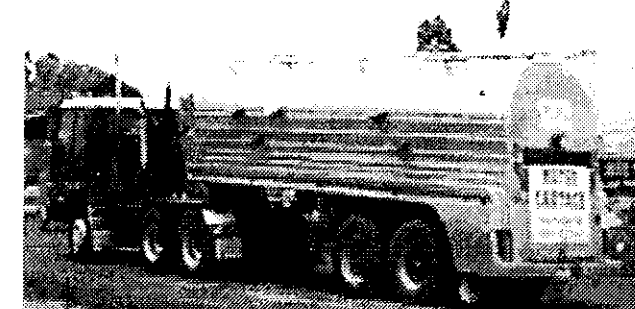
**Authorized Mazda Dealer**  
Sales, Service & Genuine Parts.  
LMCT 3039

2/94 Princes Hwy  
Beaconsfield 3807

**9796 1222**

## WATER CARTAGE

STAINLESS STEEL TANKER  
LICENCED BY SOUTHEAST WATER.  
DELIVERIES TO ALL AREAS.



**PH. 5943 1168**

## TANKS

*POLY & GALVANIZED Sold With FREE WATER offer.*



## CHRISTMAS TREES



BIRD BATHS, STATUES & FOUNTAINS.

SEEDLINGS, PLANTS.

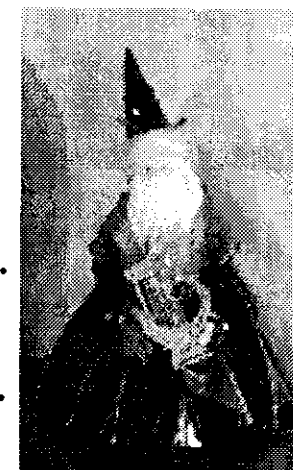
CRAFT WORK INCLUDING CHRISTMAS  
DECORATIONS & PRESENTS.

FURNITURE - PINE & GARDEN SETTINGS.

CUBBIES & GAZEBO'S.

SAND, SOIL, SCREENING, PINEBARK ETC.

PLUS LOTS MORE.



**PH. 5943 1168**

FAX. 5943 1167 MOBILES 018 543 446 or 017 878 455

OFFICER COTTAGE GARDEN NEEDS  
389-391 PRINCES HIGHWAY OFFICER 3808



# BEACONSFIELD TENNIS CLUB NEWS

(Written by M. Chatfield)



Margaret Chatfield

On behalf of the Beaconsfield Tennis Club I'd like to wish everyone a Happy Christmas and a safe and prosperous New Year. 1998 is looking to be an exciting year for the club. New courts and enhancing the grounds surrounding the courts with new seating and tree planting.

## NEW COURTS

Good news, all grants and consent have been given to

construct 2 new tennis courts. The courts will help cater for the growing number of players in the various competitions.

**MIDWEEK LADIES SPRING COMPETITION**  
Congratulations to: Section 2 finished Premiers. Section 5 went out in the Preliminary Final. Section 7 finished Runners Up. Wednesday Section- 8 & 10 finished Runners Up. Thursday Section - 1 went out in the semi final.

Midweek Ladies Autumn Competition commences in February 1998. Contact Pat Schelling on 9707 1839 for any inquiries.

## SATURDAY COMPETITION

Juniors & Seniors Both Grades will take the usual Christmas Break commencing again on 31st January, 1998.

**Junior Practise:**  
Commences again on Friday 30th January, 1998.

## WINTER PENNANT COMPETITION

Anyone interested in playing pennant Saturday or Sunday contact Adam Hurst on 9796 1364 before January, 1998. New season starts in April, 1998.

## COMMUNITY INTEREST

The National Tennis Fun Day program is on again. Sunday 22nd February, 1998 between 11am - 4pm. FREE. Come along with family and friends and try your hand at tennis. On the day lunch, afternoon tea and refreshments will be available. Tennis attire, huge raffle, coaching tips, fast serve competition, tennis games and enquires for membership are some of things to see and do.

## CLUB CHAMPIONSHIPS SENIORS 1998

Dates for events :- Singles. March 18th and 22nd. Ladies & Mens Doubles - March 29th: Mixed Doubles - April 5th: All Finals - April 19th Cost for entry. \$5. - per person per event. Singles No Entry fee. Entries close - 1st March. Entries to P.O. Box 132, Beaconsfield. 3807

## COURT HIRE

For general tennis club information or Court Hire contact Margaret Chatfield - 9707 2016.



# BEACONSFIELD CHIROPRACTIC CLINIC

**CHIROPRACTIC** is the science of neuro-musculo-skeletal medicine. It deals with the ills and injuries of the body by locating any point of interference or malfunction of the nerves, muscles or joints which may cause pain or symptoms.

**CHIROPRACTORS** are trained for a full six years at university. This enables the chiropractor as a primary contact practitioner, to appropriately assess a wide range of conditions in all age groups from infants to the elderly. All major health funds and Workcover and TAC cover chiropractic care without referral.

The Department of Veterans Affairs will also cover eligible veterans for their treatment.

AT the **BEACONSFIELD CHIROPRACTIC CLINIC** as well as general and family chiropractic care, we work closely with local sporting clubs for injury management and prevention. We also provide laser therapy and acupuncture.



Dr. Steven Pratt B.App.Sci (Chiro)

Member CAA, Member AAV

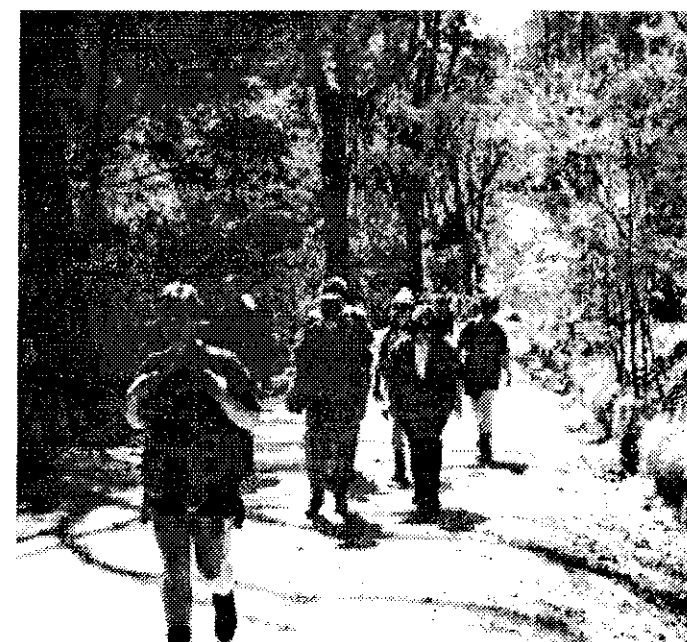
16 - 18 Wood Street, Beaconsfield

Tel. (03) 9796 1110

## COME AND JOIN US

If you read about our well-established and friendly group in a previous edition and showed an interest in our club or even better joined us on a walk; you will no doubt want to know what we have planned for January 1998. Day walks include Banyule Historical Walk, Lake Mountain and Healesville

Weirs, an Overnight walk in the Snowy River National Park, a base camp in Beech Forest and a lilo-ing on the Yarra day. Other activities for the year include, skiing, bike riding and social gatherings. If you would like more information please contact Heather 03 9704 8137 or Marjorie 03 9707 2970.



Above:- A group from Dandenong Valley Bushwalking Club enjoy a day walk.

## OUR PAC-ATTACK!

Cont. from page 20.

For black alpacas, it is recommended that in the winter months, oral Vitamin D is administered as these animals may become more susceptible to the deficiency of Vitamin D due to the lack of sunlight hours. It is also recommended that oral administration of Selenium be undertaken six weekly to prevent deficiency. Yearly teeth trimming and toenail clipping concludes maintenance tasks.

Like as in a cow, alpacas are ruminants (chew cud). Their feeding requirements are simple, a good, low protein pasture, with supplementary feeding of low protein hay or specially formulated pellets in the winter months, or for late pregnant mums-to-be, or when there is a shortage of pasture.

As the alpaca is a gentle, easy to handle animal, halter training of a weanling (tui) or older animal is a real bonus and even for the novices like us, a real attainable reward. 'Showing' of alpacas has become a major feature at most larger agricultural

shows nationally. The ability to show off your 'champion' in a ring situation has great potential with regard to the future selling your animals or recognition of desired breeding characteristics that you may wish to enhance your herd with in subsequent matings.

Although our daily routine has changed dramatically, the taste of what it must be like to be a farmer has not faltered our opinion one little bit. We remain extremely optimistic with regard to the future of the alpaca industry in Australia. All we need to do now is sit back and continue the countdown of eleven or so months, February 1998 seems a long way off!

If you have any enquiries or wish further information regarding alpaca farming, please contact Kaye Chapman, Acacia Rise Alpaca Farm, Beaconsfield, 97075589.

## Like to advertise in Beacy's own paper "THE BANNER"

Fill in the form and leave it at the Post Office.  
Name of Advertiser.....

Phone Number.....  
Address to which account is to be sent.....

Message.....

**Rates for advertising:**  
1/4 page in a single issue \$30.  
1/2 page in a single issue \$55.  
Full page in a single issue \$90.

All above rates 10% discount if paid in advance.

Beacy's Notice Board \$12.50 per issue  
Market Place \$1 per line per issue.

## MARRIED AT SWAN HILL.



Above:- Bruce and Kathy Rushton at their wedding on November 1st 1997

On the 1st. of November at Swan Hill Bruce youngest son of Tony and Dulcie Rushton married Kathy Berry. Many friends and relations made the long trip to Swan Hill for this special occasion.

The weather was wet in Melbourne but at Swan Hill the day was perfect.

The bride and her bridesmaids arrived at the church in three vintage cars. After the service the wedding reception was held at The Barn at Speewa.

Kathy and Bruce returned to The Barn the next day to spend more time with family and friends. The couple left after lunch for their honeymoon on the Gold Coast. They will live in the Swan Hill area.

Paul and Kaye Cohen of Paul Cohen Photography did a first class job of the Photographs.



# BEACONSFIELD VIDEO LIBRARY

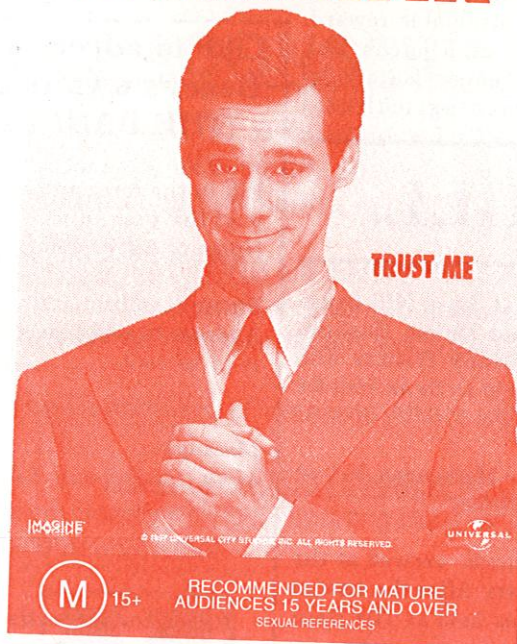
**PH:9796-1041**

**OPEN EVERY DAY**

**12NOON-9PM**

**RENT IT NOW ON VIDEO**

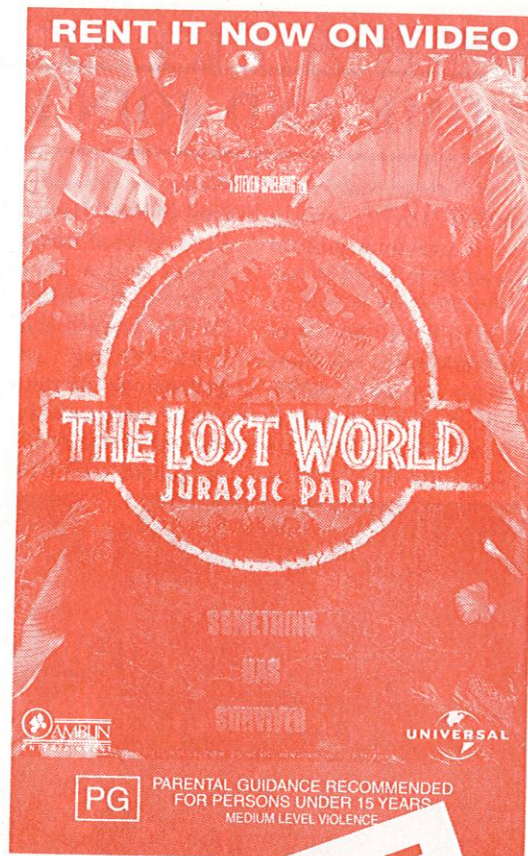
**JIM CARREY  
LIARLIAR**



**AVAILABLE  
JANUARY 98**



**RENT IT NOW ON VIDEO**



**AVAILABLE  
NOW**

**1/2 PRICE ON**

**ALL OVERNIGHT VIDEO'S  
MONDAY TO WEDNESDAY  
(EXCLUDING PUBLIC HOLIDAYS)**

\*\*\*\*\*

**ALSO AVAILABLE TO RENT  
VIDEO PLAYERS  
GAME MACHINES  
GAMES FOR ALL SYSTEMS**

\*\*\*\*\*

**WEEKLY SPECIAL  
ANY 3 WEEKLYS FOR \$5  
ANY 6 WEEKLYS FOR \$10**

