

Beaconsfield Banner

Vol. 8 No. 4 Published by the Beaconsfield Progress Association Inc. August 1996

NEWSLETTER CO-ORDINATOR TED HORTON Ph. 9707 1313 ASSISTANT MARGARET BOON 9707 5053 PHOTOGRAPHY PAUL COHEN 9707 2480
ADVERTISING CO-ORDINATOR TONY RUSHTON Ph. 9707 1765 BANNER POSTAL ADDRESS PO. BOX 217 BEACONSFIELD 3807

COMMUNITY CENTRE SAVED

"Community Centre and Scout Hall saved by impending land purchase" says Keith Goodman, Secretary, Beaconsfield Progress Association.

In October 1995 the Minister for Public Transport declared the land on which the Beaconsfield Community Centre and Scout Hall "surplus to PTC requirements". As both buildings sat till then on land leased from the PTC the future for both buildings was uncertain to say the least. From October the Beaconsfield Community Centre Committee and the Progress Association Committee have been represented in discussions by Keith Goodman with senior staff at the Cardinia Shire Council. Keith said "the Community of Beaconsfield

would like to thank John McCaffery, Corporate Manager Planning and David Roff, Corporate Manager Finance for their assistance in resolving this matter to a successful conclusion".

A letter received on the 5th August from David Roff states ".....I confirm that Council has provision in the 1996/97 Budget to acquire land on which both the Community Centre and Scout Hall is situated. It is Council's intention to acquire the property over 2 financial years with the balance of funds provided in 1997/98....."

A satisfactory conclusion for everybody concerned, organisations involved can now look to the future with certainty.



NEWS FROM CARDINIA SHIRE

By John White



Above: John White CAPITAL WORKS GRANTS

Included in the recently completed budget for 1996-97 are the Annual Capital Works Grants. These grants are made available annually to Community Groups managing community facilities on Shire or Crown Land - including public halls reserves, sporting and recreational facilities and community centres.

The Capital Works Grants are matched grants. This means that committees work very hard on behalf of the community to be eligible for Shire assistance. Recreation projects are supported on a 1:

basis while kindergartens, Neighborhood Houses, Community Centres and Halls may receive assistance on a \$2.00 Council: \$1 Committee basis.

Projects that have recently been completed in the 1995/96 grants include an extension and upgrade of the Beaconsfield Kindergarten and the new netball and practice area at the Recreation Reserve.

Projects at Beaconsfield in the new budget include the installation of shelving and new floor coverings at the Beaconsfield Kindergarten costing \$4,000 (Shire \$2667 committee \$1333) which will complete the major improvements at the Kinder. The Beaconsfield Recreation Reserve will be further improved with the installation of new lights at a cost of \$19,300.00 (Shire \$9650.00 Committee \$9,650.00)

Both of these projects will be managed by the Committees which have so ably worked to further improve excellent community facilities in Beaconsfield

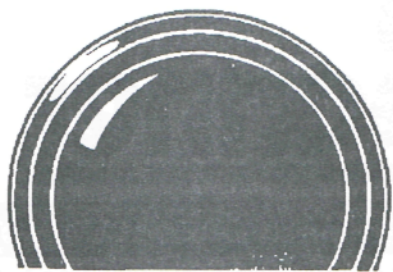
Cont on Page 2.



LOCAL HISTORY WITH JOHN WELLS. OCT. 29TH.

Well known local writer and Gippsland historian John Wells will be the guest speaker at the Progress Association AGM. He will speak on the history of this area, some of the books he has written are GIPPSLAND people, places and their past, COLOURFUL TALES OF OLD GIPPSLAND and a number of others. The meeting will be held at the Beaconsfield Community Centre Commencing at 7.30 pm.

Pictured left our Photographer Paul Cohen caught John Wells working at his computer.



PAUL COHEN PHOTOGRAPHY

Weddings

Portraits

Sports

Copy Photos B/W

B/W Dev & Printing

16 Lyle Avenue

Beaconsfield 3807

Telephone

9707 2480



REAL ESTATE

EST. 1950

For your Real Estate needs, contact the district's most experienced agent.

PROPERTY LETTINGS

SALES and

VALUATIONS

Phone 9707 1944

HUDSON REAL ESTATE

G. H. Hudson Pty. Ltd.
57 High Street, Berwick

Licensed Estate Agent Registered Property Value



NEWS FROM CARDINIA SHIRE

Cont. from Page 1.

AUSTRALIA DAY

Invitations have been sent to community organisations across the Shire to be involved in the planning of the celebrations of Australia Day in 1997.

One of the tasks of the Australian Day Committee is to select the persons and groups to receive the Shires Australia Day Awards:

The three categories for these awards are:-

The Australia Day Citizen of the Year

The Australia Day Junior Citizen of the Year

The Australia Day Community Award

Groups or individuals may submit nominations for these awards by completing the nomination forms which can be obtained by contacting John White or Shelia Barnett at the Cardinia Shire Offices Ph (059) 454 222. Nomination forms for the Australia Wide Youth and Adults are also available on request.

The first meeting of the Australia Day Committee was held at the Cardinia Shire Offices at 7.30p.m. on Monday August 19th.

Community groups or interested individuals are invited to attend this meeting.

CHANGES TO THE AFTER SCHOOL AND VACATION CARE PROGRAMS

The auspice for the operation of this program has been transferred to the Beaconsfield Primary School on a trial basis for the next 6 months. It is hoped that the program will develop with increased input from the local community.

Enquiries about these programmes can be directed to the Beaconsfield Primary School ph. (03) 9707 1510.

CAROLS BY CANDLELIGHT 1996

Following the great success of 1995 planning is again in hand for the second production of the Cardinia Shires "Carols by Candlelight". This will again be held in the parkland adjacent to Lilypond House on December 14th, 1996.

The program will again feature Mr Lindsay Edwards, the Australian Childrens Choir and the McDonalds Youth Band.

INDEX

REGULAR ARTICLES

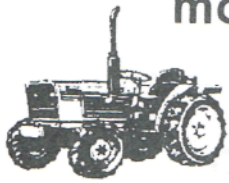
Accidents	7
Beaconsfield Com. Centre	4
Beacy Notice Board	14
Brickbats & Bouquets	13
Church Times	11
Citizens Advice Bureau	19
Classifieds	22
Crime Report	18
Crossword	15
Our Natural World	9
Rainfall in Beaconsfield	18
Recipe	11
Sport	21
Wine and Food	10

FEATURE STORIES

Beaconsfield Always	
Leaving Always Gone	3
Beaconsfield Fire Brigade	8
Beaconsfield Pri. School	20
Cardinia Shire News	1
Charles Gamble	17
Child Care Options	5
Community Centre Saved	1
Kindergarten 25 Years	20
Local History / John Wells	1
Notes From Beacie Baptist	7
The Eels are Alive	8
The Folks Who live on the Hill	6
The Great Flood of 96	19

CLOSING DATE FOR NEXT BANNER IS SEPTEMBER 30th

For all outdoor
needs from tractors,
mowers, chainsaws,
brushcutters,
pumps, etc.



Spares, Repairs & Service

Contact Peter Willis

**Beaconsfield
Mower & Tractor
Centre**



9707 5368

**BEACONSFIELD
AUTO
ELECTRICS**



3/94 Princes Hwy Beaconsfield
Telephone: 9796 1550

MOBILE 018 353 950 FAX 9796 1144

- ★ Change Over Starter Motors & Alternators
- ★ Ultrasonic Injection Cleaning
- ★ E.F.I. Tuning & Repairs ★ Batteries
- ★ Air Conditioning Service & Installation
- ★ Headlight Alignments ★ Tune - Ups
- ★ Onsite Service Calls ★ Full Re-wiring

Also at:
29 Enterprise Ave.
Berwick Ph:9 707 3617



BEACONSFIELD - ALWAYS LEAVING, ALWAYS GONE...

By John Wells



Above:- John Wells

As Beaconsfield Lower and as Little Berwick, as the Cardinia Crossing and as Beaconsfield, this little township was always denied its own share of fame. Berwick sits snugly on the west side of the hill, facing the sunset. Upper Beaconsfield lives among the hills and trees to the north, while Beaconsfield sits there facing the sunrise but seeming to live in the shadow of its neighbours.

Was Beaconsfield always a place one went through on the way to somewhere else? That seems to be how most historians have seen it. Yet Beaconsfield has been crucial to the growth of those neighbours and it has more than its share of history, more than its share of the past and an even greater share of the future.

In the space I have here I can't tell you all that history - I'll do more of that verbally in a couple of months - but consider these few highlights.

The legendary Bowman's Track began near Beaconsfield and led people from the Gippsland Track to the goldfields of the Jordan. The Gippsland Track itself led over the Berwick Hill, down the hill again and across the Cardinia Creek. A few people camped here on the way east but it seems that climbing the hill was often left to the following day, so that Beaconsfield was a lunch stop rather than an overnight break. There was another route, too, along the line of Inglis Road, but that still brought few people who stopped.

Bowman's Hotel (Souter's Gippsland Hotel) attracted a few 'stayers' and Prince Alfred, second son of Queen Victoria, stayed in the specially-extended Bowman's Hotel, on his second visit to Victoria, in 1869.

When the railway line was built in 1878 there was no station at Beaconsfield, and when one was built it was intended to serve the guest houses and hotels of Upper Beaconsfield, and the timber traffic coming out of the hills, passing through.

Beaconsfield was a timber outlet in the 1870s, when William Brisbane and John Day were running their sawmill on the Cardinia Creek, somewhere within the Akoonah Park area. Brisbane had subdivided about 4000 acres at Upper Beaconsfield and, like many others of the day, realised that selling the timber while the land was being cleared could provide valuable cash. The problem was getting the logs to the mill. He had a tramline running north along the creek and formed the Berwick Tramway Company to extend the route into Upper Beaconsfield.

The tramway company was never a success but Brisbane and Day were responsible for the opening of the Beaconsfield Siding in 1880. A platform and metalled approach road were built and by the end of the year the tramway was extended into the rail yards.

In 1887 Beaconsfield was a "township with telegraph station and post office, near Gippsland railway line...The Beaconsfield Hotel, situated on the Beaconsfield Ranges, is largely patronised by visitors for health and recreation; it contains 30 rooms. A coach runs to and from the railway station daily. The Cardinia Creek, at Beaconsfield railway, is a favourite place of resort for picnic parties. A.H. Somner, Postmaster. Population 90"

Cont. on Page 13



Beaconsfield Community Centre Inc.

P.O. Box 2 Beaconsfield.
Ph. 9707 3449

COMMUNITY CENTRE NEWS

Written by Glenda Fryer

The cold weather has not affected the operations of the Community Centre, so please feel free to call in and say hi!

Is there any particular course you would like to see offered? Speak to Glenda in the office, we would like to hear your ideas.

Courses are in full swing. Embroidery, Introduction to Computers, Introduction to Carpentry have all been well attended by those wanting to learn something new and have a bit of fun. Exercises for Over 50's has struck a cord amongst the locals and they all have a ball.

Here's something a bit different, Reflexology. Bring your partner along to learn the basics of foot massage and

treat yourself to some gently massage. Interested? Ring the centre for further details as enrolments are still being taken for a Saturday Reflexology Workshop on 7th September.

Expressions of interest are being taken for a Music for Toddlers class aimed at 3-4 year olds. Introduce your child to rhythm and movement through music. Ring the Centre to express your interest and discuss any further details.

Don't forget our wide range of Children's Services that we offer as well as our Line Dancing, Midway for Over 50's, Patchwork and Artist group and the Walking group.

We aim to provide something for everyone. Feel free to drop in and look around or ring the Centre on 9707 3449.

LC

- ★ LAWNS CUT
- ★ RUBBISH REMOVED
- ★ RIDE ON AVAILABLE
- ★ FULLY INSURED
- ★ COMPLETE GARDEN CARE
- ★ WEED CONTROL



Mobile 015 518 256
Phone(059) 96 9577

PROMPT - RELIABLE SERVICE SEVEN DAYS A WEEK

BEACONSFIELD CHIROPRACTIC CLINIC

CHIROPRACTIC is the science of neuro-musculo-skeletal medicine. It deals with the ills and injuries of the body by locating any point of interference or malfunction of the nerves, muscles or joints which may cause pain or symptoms.

CHIROPRACTORS are trained for a full six years at university. This enables the chiropractor as a primary contact practitioner, to appropriately assess a wide range of conditions in all age groups from infants to the elderly. All major health funds and Workcover and TAC cover chiropractic care without referral.

The Department of Veterans Affairs will also cover eligible veterans for their treatment.

AT the BEACONSFIELD CHIROPRACTIC CLINIC as well as general and family chiropractic care, we work closely with local sporting clubs for injury management and prevention. We also provide laser therapy and acupuncture.



Dr. Steven Pratt B.App.Sci (Chiro)

Member CAA, Member AAV

16 - 18 Wood Street, Beaconsfield

Tel. (03) 9796 1110

CHILD CARE OPTIONS

For many reasons, parents need to avail themselves of care for their children.

A great variety of childcare options are available in Beaconsfield and Officer, each providing a valuable service to the many families involved.

All services will welcome enquiries and will be willing to discuss your families needs.

BEACONSFIELD PRIMARY SCHOOL AFTER SCHOOL CARE PROGRAM.

Where: - At the Beaconsfield Primary School, Lyle Ave.

When: - Each school night from 3.30pm - 6.30pm. - School Holidays - Curriculum Days

How Much: - If you have a Health card, this program is subsidized. You may pay as little as 50cents per afternoon. Normal charges - \$6. per afternoon with lower charge for each extra child in the family.

Activities: - Afternoon tea, art/craft, quiet games, outside organised games.

Contact: - Students must be registered before attending the program. Contact the school on 9707 1510.

FAMILY DAY CARE

Applications are invited from people living in the Beaconsfield area, with suitable skills and abilities to become Family Day Care caregivers with the Shire of Cardinia.

Caregivers provide childcare from their own home on either a full time or part time basis.

For further information and an application form, interested people should phone the Coordinator, Margaret Aveling, on 059 414422 during office hours.

If you wish to know more about how your children can be enrolled in the Family Day Care Scheme also ring Margaret Aveling, 059 414422.

BEACONSFIELD COMMUNITY CENTRE OCCASIONAL CARE.

Beaconsfield Avenue, Beaconsfield. Ph:- 9707 3449

A great opportunity for parents to have a rest, do some shopping perhaps even study or do a course while the children are cared for in a safe and friendly environment for up to 3 hours. Sessions available on Tuesday 12.15pm - 3.15pm or Thursday 9.15am - 12.15pm. For bookings or further information ring Community Centre 03 9707 3449. Visiting the centre to speak with the Childcare Directress, Mrs Gillian Ward is always welcomed.

Expressions of interest are being taken from parents who would be interested in using this service for up to 3 hours on Fridays during 12.15pm - 3.15pm. Contact Glenda, 03 9707 3449.

BUTTONS & BOWS CHILDCARE CENTRE

6 Stella Street, Beaconsfield. Ph:- 9707 5532

We are a quality child oriented centre, whose fee structure is realistically priced to cater for the "average" working family.

Our small centre (30 spaces) ensures that each child receives individual attention based on their needs and interests.

Qualified staff provide a pre-school program for the 3-4 year olds plus organised activities for those under 3.

The centre is fully accredited by the National Childcare Accreditation Council and we welcome Parents to pop in any time to look over our facilities. For further enquiries contact the centre on 9707 5532.

OFFICER CHILDCARE CENTRE

454 Princes Highway, Officer. Ph:- 059 432 425

Officer Childcare Centre has now been

operating for nine months during which time it has established itself as one of the most caring, educational and fun centres in the district.

As a family owned and operated business great emphasis has been placed on providing a homely environment where both children and parents feel comfortable and welcome.

Qualified staff run fun and educational programs in all rooms whilst a qualified Kindergarten teacher operates regular kinder sessions four mornings per week.

Regular activities include arts and craft, drama, movement, music, storytelling, puppetry and animal/pet care.

All meals provided at the centre are regular and nutritious (5 weeks menu displayed in the foyer at all times. The centre operates 6.30 am to 6.30pm Monday to Friday, during which time parents and children are welcome to visit and view the program.

The centre will be holding a Monster Garage Sale and Mini Market Sunday, 8th September 9am - 3 pm. The day will include pony ride for children, Harley motorbike for children's photographs and a car wash. All public welcome.

For enquiries contact Sharon on (059) 432 425.



Above:- A group at Officer.

BUTTON & BOWS

CHILD CARE CENTRE

Accredited by the National Childcare Accreditation Council



Weekly \$110 per child

Part time - Permanent:
Daily \$22 per child

Hourly \$2.00 per child
\$4.00 per child (casual)
1/2 day: \$11 per child

FEE RELIEF AVAILABLE
Ph: (03) 9707 5532

BEACONSFIELD NATUROPATHIC CLINIC

ESTABLISHED IN BEACONSFIELD FOR MANY YEARS,
AND USING ONLY TRADITIONAL, NATURAL,
RELIABLE HEALING METHODS AND MEDICINE.

PETER N HANSEN

N.D. DIP. HOM. C.I. A.T.M.S.
NATUROPATH
HOMOEOPATH
IRIDOLOGIST

- Member of the Australian Federation of Homoeopaths.
- Member of the International Federation of Homoeopathic Physicians.
- Member of the Australian Traditional Medicine Society.

Special interests in childrens problems, and all emotional illnesses.

46 - 50 PRINCES HIGHWAY BEACONSFIELD
(NEXT TO SWIMMING POOL)

TEL: 9707 3892 A.H. 9707 1214

KEN BRYAN 9707 3864

K.B. TRANSMISSIONS

Automatic Transmission

Specialists

31 ENTERPRISE AVENUE.
BERWICK, 3806

K.B. TRANSMISSIONS

Automatic Transmission Specialists

31 ENTERPRISE AVE.,
BERWICK

PHONE 9707 3864

THE FOLKS WHO LIVE ON THE HILL.

George and Joan Armitage are now octogenarians having recently celebrated their 81st and 80th birthdays.

Their home over the last 20 years has changed little with Joan's oil paintings adorning the walls, plenty of books on nearby shelves, the piano in the living room and many ornamental mementos from the past. Perched high on the hill looking down over Beaconsfield, the town below is for ever changing with more new rooftops popping up and the sprawl of new roads and housing estates. On a clear day the water of Port Phillip Bay still shimmers in the sunshine.

George and Joan have spent half of their lives in Australia having emigrated from Birmingham in England in 1955. George has always been a printer in his working life whereas Joan has taught drama, been a nurse, studied and practised chiropody. George was the first printer of the Beaconsfield Banner Newsletter.

It was after they had bought their block of land in Vernon Road in 1966 that Joan suffered a polio related illness that has restricted her to a wheelchair and couch existence ever since. Physically, Joan may be limited but she has retained a very agile mind and positive outlook on life. "There are many worse off than me" she

quips from her couch in the corner.

Joan's misfortune has only strengthened her resolve to be active mentally and creatively and often for the benefit of others. In 1978, she and George started up the 'Friendship Club' at the Buff's Hall, as it was known, in Railway Avenue Beaconsfield. This became a lifeline for lonely people in the area and gave pleasure to the many that regularly attended. Joan has continued strongly with her hobby of writing, contributing regularly to magazines and recently to the Banner. Typically the subject matter was often humorous yet philosophical. She has even written two books entitled 'Australia, here we come' which was very popular with new arrivals to this country and 'The Have You Ever?' Story Book which again reflects well Joan's lively sense of humour.

"It's always easier to drag people down with your own negative thoughts than it is to uplift others with positiveness and humour" Joan reckons. Its with these thoughts that she has been able to bear her own debilitating illness and overcome other tragedies in her life. One of their two sons was tragically killed at the age of seventeen in an accident at Springvale.

Cont on Page 10.



Left:- A couple of Books written by Joan Armitage

ACCIDENT REPORT

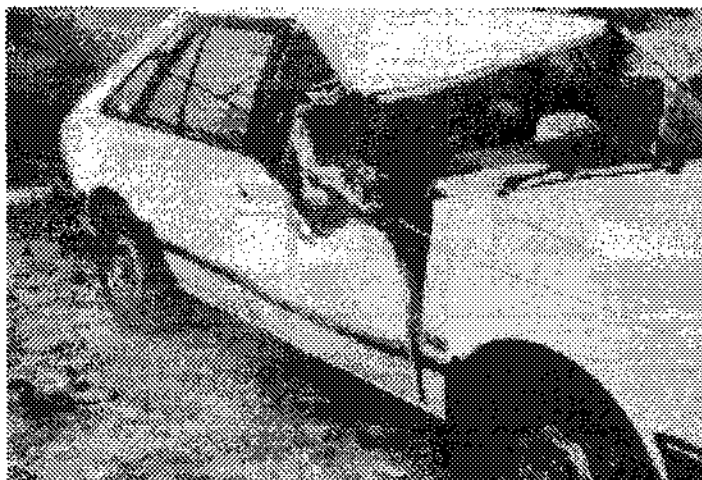
By Lisa Edwards R.S.V. Engines / Clough's Towing.

1st August - Approx 10 am
Ford Laser travelling towards
Officer collided with the rear
end of a truck attempting to
turn around on Berwick By-
Pass Freeway. Male Driver
of the Laser received minor
injuries, unfortunately his car
didn't fare quite as well.
(See Photo)

13th August - Approx 1 pm
- Toyota Corona + XD Ute
collided on Clyde Rd on
Freeway Overpass.
Passengers were all lucky to
escape with no injuries.

17th August - Approx 12.30pm
- Commodore lost control on
Clyde Rd near Pound Rd
Intersection resulting in the car,
with 2 male passengers on board,
rolling several times ending up
in drain at the side of the road.
Both males received serious
injuries - passenger of vehicle
described by Police in attendance
as "lucky to be alive".

All accidents attended by RSV
Engines/Clough's Towing.
Your local community tow
trucks. It pays (\$\$) to ring!



Rodney Edwards
R.S.V. ENGINES

9796.1222

RODNEY & LISA EDWARDS

All Mechanical Service & Repairs,
Including Brakes, Clutch, Suspension
& Exhausts, Change over Engines,
Cylinder Head Reconditioning.

24 HOUR. TOWING SERVICE

2/94 Princes Highway
Beaconsfield 3807

(03) 9796 1222

NOTES FROM "BEACIE BAPTIST"

(Old Princes Highway, near the Beaconsfield Swim School)

MAKE AND MINGLE (Written by A. Taylor)

CRAFT & FRIENDSHIP
Why not escape the cold
winter, and find the warmth
of friendship and craft at
Make and Mingle.

This term you can join us in
One Step Decoupage, Knitting
Corner, Crocheted Tartan
Rugs, Fabric Painting &
Stencilling, Spinning,
Embroidery crafts, Marbling,
or just come along for a chat
& cuppa.

Every Wednesday during
school term 10am-12 noon at
Beaconsfield Baptist Church.
Corner of Souter Street and
Princes Hwy. (next to Swim
School), Beaconsfield.

Enquiries Ann 9707 1996

NOTES FROM 'BEACIE BAPTIST'

SUNDAY SEPTEMBER
15TH AT 7.00 P.M.

**THE SECRET TO
HAPPINESS** (A video address
by Dr. Billy Graham) You're
welcome to come and see what
it's all about, and stay for a
"cuppa" after.

A WORD FROM THE WISE...

Conceited people can never
become wise, but those with
their feet on the ground learn
easily.

A fool will believe anything,
smart people watch their step.

Foolish people don't care if
they sin, but good people want
to be forgiven.

(from The Book of Proverbs)



Bruce Clough's
BERWICK TOWING

9796.1222

24 HR TOWING SERVICE

1975 Princes Hwy
Nar Nar Goon 3812
(059) 42 5238

Authorized mazda Dealer
Sales, Service & Genuine Parts.
LMCT 3039

2/94 Princes Hwy
Beaconsfield 3807

9796 1222

CARDI COUNTRY ORCHARDS

IAN WAKE

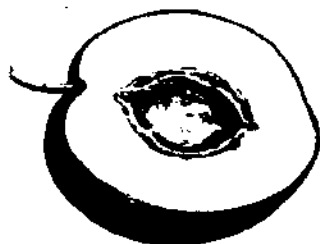
Apples & Pears

all year round at wholesale prices

specialists in

Peaches & Nectarines

(in season)



Open 7 days a week 8 am. to 5 pm.

PAYNE ROAD BEACONSFIELD 3807

PHONE (03) 9707 1549



BEACONSFIELD FIRE BRIGADE REPORT

The unit is still badly in need of more volunteer members. Being a volunteer can teach one plenty of new skills and it is a very worthwhile service to belong to. It is vital for the safety of the local community. The brigade will take anyone from the age of 16 and after an initial training period newcomers will attend call outs with the rest of the team.

In case of a fire emergency, the old telephone number 9 707 2828 is still in use. However the number 000 is the better number to ring.

Captain Ron Woodfine reminds residents that the old yellow BCF Fire extinguishers should not be used now and should be handed in to the brigade.

Fire hazards to be aware of during the winter months include solid fuel heaters and electric blankets. Heater flues must be installed properly and kept clean of sticky sap residue from burning green timber. Electric blankets should be checked and tested before each winter season and one should never go to bed with them still switched on.

Vehicle accidents are increasing and call outs to them quite regular now. It is not simply attending to put out fires at accidents but to attend to cleaning up the fuel spills on the road and the fuel that spills out into the drains that takes up a lot of time. The brigade spends a lot of time on environment protection duties which the general public may be very unaware of.

THE EELS ARE ALIVE WITH THE SOUNDS OF RAINDROPS.

It was a cold, wet and blustery morning on Saturday 20th July when 18 year old James Kristinof ventured out to go fishing in Beaconsfield. Most other residents of Beaconsfield were glued to their TV's watching the opening of the Atlanta Olympic Games in their warm living rooms. What they all missed however was seeing James catch one of the biggest eels ever caught in Beaconsfield.

Weighing in at 9lbs and 3 oz clean weight and measuring 1300mm long it was huge. It had a head on it measuring 17cms x 18cms. The creek was high and rising and furthermore, James reeled in 3 brown trout and 1 carp in only two hours that same morning. He was using quite an ordinary rod with a 25lb line and .02 hook with a beam running sinker. Regular garden worms were used for bait.

James has been very keen on fishing since the age of three when he regularly accompanied his uncle Tom to the waters edge and threw in a string line on the end of a green stick.

James has caught many fish in the Cardinia Creek. In summer time its mostly eels, brown trout and dulong. The eels taste great after a light frying on the barbie he says.

James had a hectic time on Saturday 20th July wrestling a giant eel and hooking a succession of other fresh water fish in not much over two hours. He reckons its a very relaxing past time which is rather contradicted by his amazingly successful strike rate.



James with his large eel he caught in Beaconsfield.

What a load a Rubbish

"OUR BUSINESS IS PICKING UP RUBBISH"

- * I will pay \$20 for your old Big Bins
or
- * I will empty your 240L Big Bin for just \$8 per month.
- * Garden and Household Rubbish accepted.
- * Extra Rubbish can also be collected.
- * No contracts.
- * Bin does not have to be left on nature strip for collection.
- * To find out when I am in Beaconsfield



PHONE COLIN COCHRANE ON
9558 1641 OR 018 104 797

BEACONSFIELD AUTOMOTIVE SERVICES



Rob Robinson

Qualified Motor Mechanic
Licenced R.W.C. Vehicle Tester
& Repairer

Factory No. 1
94 Princes Hwy.
BEACONSFIELD



Lic Vic Roads
Vehicle Tester

PHONE: 9707 4468

Beaconsfield Lodge Motel

Stay in one of our new or
completely refurbished
and renovated units



Our 12 units feature double, twin or
queen size beds and a two brm family unit.

Your Hosts: Robin & Kathleen Best

**Budget
Motel
Chain**

1 Souther St.
Beaconsfield
(03) 9707 1454

OUR NATURAL WORLD

(Written by Peter Hansen)



Peter Hansen

The Art of "Personology" is something not terribly well known, but can be used to gain a quick assessment of someone you meet the first time. Personology is a type of psychological structure analysis developed by Judge Jones in the early 1900's and expanded by Whiteside.

More specifically, it is the art of interpreting the physical structure and design of a person's face and body to understand the character, temperament, abilities, feelings, actions, thoughts and characteristic facial expressions.

The following characteristics are examples.

CHIN: A pronounced or protruding chin indicates tenacity and determination. A weak or receding chin shows a lack of tenacity and this person needs lots of encouragement.

HAIR: A person with coarse hair is less sensitive than a person with fine hair. Artistic people are generally in the latter category.

FOREHEAD: A high forehead indicates a strong tendency towards mental activity, and away from physical activity. These people need physical exercise to balance out and need lots of "Brain Food" in their diet.

EYES: Close-set eyes can indicate intolerance, who allow trivial things to bother them, and are prone to ulcers. Wide set eyes are found in people who are easy going, who don't let things get them down. They believe in "Live

and let live".

EYELIDS: The analytical trait is demonstrated strongly in those who have little eyelid visible as they look at you. They need lots of explanations. Those whose eyelid is more visible don't need to know as much. They're not interested in the "whys and wherefores" of things.

NOSE: People who have a big hump on the nose are interested in acquiring things. They are interested in money and have a natural ability to get it.

LIPS: People with large lips love to talk. Those who have a short close-together lips tend to be curt, and will seldom offer conversation unless the subject appeals to them; then they'll talk.

EARS: People with round, bell-like ears love music.

EYEBROWS: People with straight-across eyebrows are aesthetically minded. They love colour, form, texture, beauty, but are often impractical finding difficulty keeping their feet on the ground.

We become aware of personology when we pass comment about people. We may say, "He's got a nose for news", or, "She has a loving eye", or, "He's got a poker face", or, "That's a tactful look", and so on.

The wonder of man never ends, and the attentive observer is rewarded by his discoveries and they can make life much smoother to transit.

As O.S. Marden said, "The environment you fashion out of your thoughts, your beliefs, your ideals, your philosophy, is the only one you will ever live in"



THE WILLOWS NURSERY

Fully qualified, ex-teacher of Horticulture John Baker gives you free advice on all Your gardening problems



THE WILLOWS NURSERY
Cnr. Princes Hwy & Glismann Rd., Beaconsfield

97074852

OPEN 7 DAYS A WEEK 9am-5.30pm

BEACONSFIELD GARDEN SUPPLIES **BGS**

For friendly,
efficient service

- * Sand, Screenings and Cement
- * Pavers and Terra Cotta Agi Pipes
- * Redgum Chips and Pine Bark
- * Sleepers (old and new)
- * Scoria and Rocks
- * Plumbing Supplies

WE CATER FOR ALL BUILDERS,
LANDSCAPERS AND TRADESMEN

•Deliveries 7 days a week•

**BOBCAT / BACKHOE AND
TIPPER FOR HIRE**

"Call in and say Hello"

94 - 100 Princes Highway, Beaconsfield
Telephone (03) 9707 5144

WINE AND FOOD

By Keith Goodman



Keith Goodman

The .05 rule and fewer dinner parties see us drinking less fortified wine these days but cosy fires and friends around in a more casual atmosphere, puddings or rich cakes like Anne's Chocoholics Dream provide us with an excuse to try a fortified.

We really produce fantastic fortified wine especially Muscat and Tokay. Our Tawny Ports and mature Vintage Ports, while very satisfying, tend to an almost overpowering richness, lacking the elegance and almond essence clean spirit style of Portuguese Vintage and Tawny Ports.

My preference with a rich, dense and moist cake (see recipe) is Tokay. Golden nut

brown in colour and rich with aromas of malt, caramel, toffee and a freshly opened packet of tea leaves. Deep intense flavour with an oily luscious mouthfeel, the flavour goes on and on - very satisfying wines.

Bailey, Campbell, All Saints, Brown Bros, Pfeiffer all make lovely examples. My choice though is either the Morris Old Premium Liqueur at \$40 or the Morris Liqueur Tokay at \$14. One provides great value the older wine should be experienced once in a lifetime or given as a special gift. A bottle to take to a desert island.

Wine tasted recently and recommended : Leconfield Coonawarra Rhine Riesling 95, \$14; Mooroduc Mornington Peninsula Cabernet 93, \$25 approx just a lovely wine; Tim Adams The Fergus 95, \$14 rich, soft Grenache; Peter Lehmann Barossa Shiraz 94, \$14. Seen advertised : De Bortoli Yarra Valley Chardonnay 94, \$14 a Trophy winner normally selling around \$20 - a bargain.

THE FOLKS WHO LIVE ON THE HILL.

Cont from Page 6.

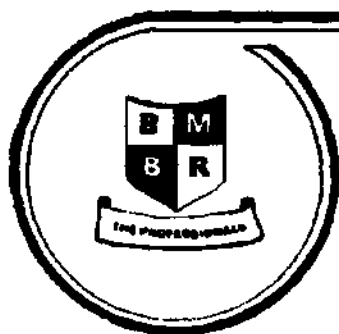
Writing to other people often occupies the mind in other ways which is very fulfilling. Joan still corresponds to school friends from early days in England, many of whom are scattered around the world now. Her special assignment in life has been to write to the children of a school in Bournville, Birmingham. This has been a marathon task done quite voluntarily to answer questions about Australia like "Do Kangaroos live in your garden?" and "what do Koala bears really look like?" Few really could differentiate between the outback and Melbourne suburbs.

After 41 years residing in Springvale and Beaconsfield Joan appreciates how much Melbourne has matured

culturally over time. "The Country has come of age". Joan is also very appreciative of facilities that the Council provides, especially Home Help as she is unable to do so little around the house.

Despite her constricted and remote lifestyle Joan is much more a giver than a taker. Through her creativity she still manages to knit toys for charity shops and rugs for Animal Shelter. She uplifts many with her interesting writing and inspires others with her perseverance over personal adversity.

George and Joan still have many people come and visit and keep in touch with many other old friends that have now left the district.



Berwick Motor Body Repairs

PTY. LTD.

SPECIALISING IN
INSURANCE SMASH REPAIRS
FOR ALL MAJOR INSURANCE COMPANIES

Using Universal Car Bench

Dedicated Jig System

European Paint Baking Oven

24 HOUR TOWING SERVICE

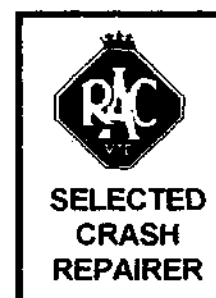
(03) 9796 1199

BODY SHOP

(059) 432 343

PRINCES HIGHWAY
OFFICER, 3809

COURTESY CAR AVAILABLE



CHURCH SERVICE TIMES

ANGLICAN:

Berwick. Peel Street
Sunday. 8.00am; 9.30am; 11.15am

Upper Beaconsfield.
Sunday. 9.30am; 7.00pm.

BAPTIST:

Beaconsfield. Old Princes Highway
Sunday. 10.30am; 7.00pm.
Sunday School 9.15am.

CATHOLIC:

Berwick. High Street.
Saturday. 6.00pm
Sunday. 9.00am; 10.30am; 6.00pm.

SALVATION ARMY:

Berwick. Primary School Hall.
Sunday 10.00am.

UNITING:

Berwick. High Street.
Sunday 10.30am

RECIPE CORNER

A CHOCOHOLICS DREAM CAKE

Process in a food processor :

1 medium grated potato
40gm good quality cocoa
1 cup sour cream
60gm soft unsalted butter
145 gm plain flour
190gm caster sugar
1 egg
 $\frac{3}{4}$ tsp. bi-carb
1 pinch salt
1 tsp. vanilla



Process lightly

Pour in a buttered 21- 23cm tin.

Bake for 35 mins in oven at 180c

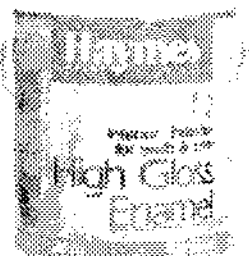
This is a dense, moist and rich chocolate cake.

Serve with a little quality cream and some pureed fruit like raspberry, tamarillo or strawberry.

Anne Goodman.

BEACONSFIELD TIMBER AND HARDWARE Pty Ltd

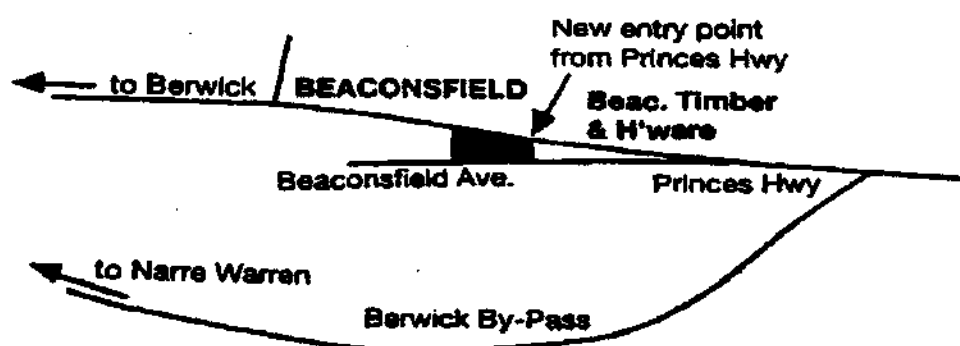
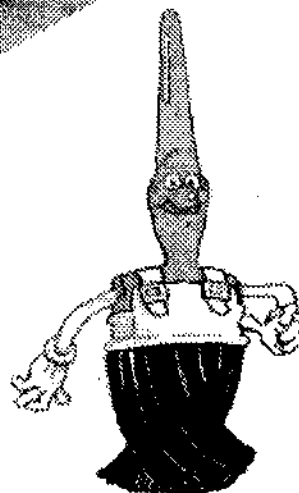
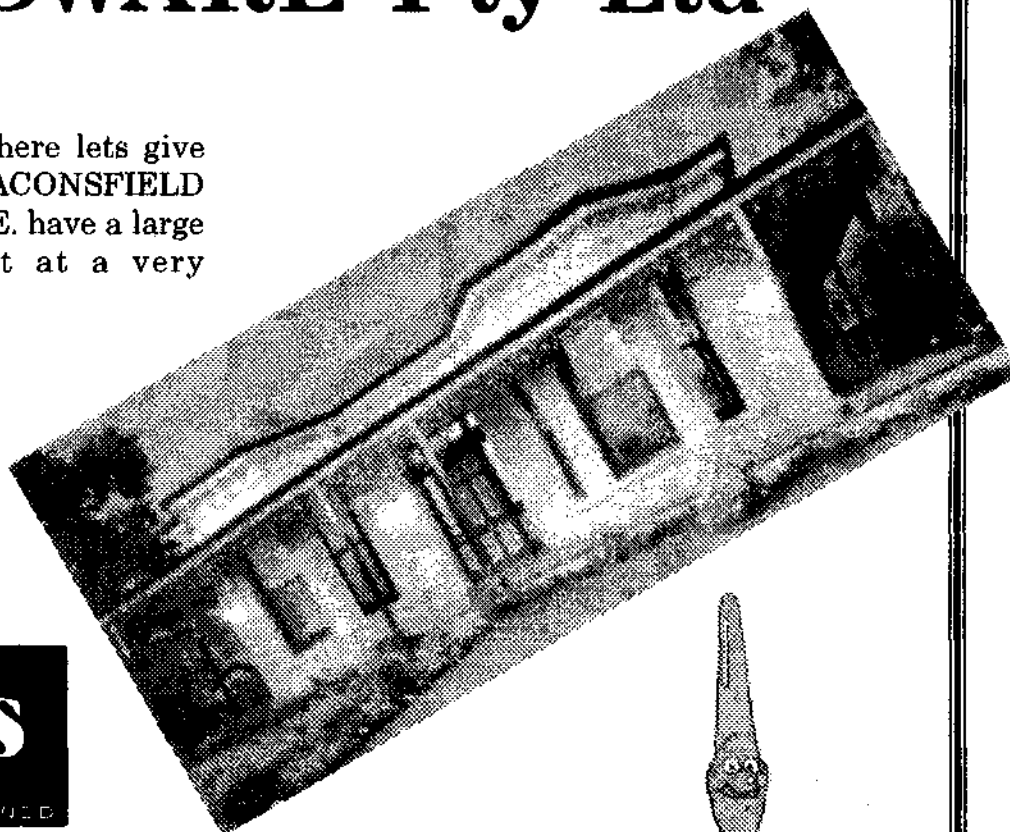
Now spring is just about here lets give the house a new look. BEACONSFIELD TIMBER AND HARDWARE. have a large range of Haymes Paint at a very competitive price.



BEACONSFIELD TIMBER AND HARDWARE Pty Ltd.

We can supply all tools and materials for any projects small or large at a very reasonable price.

9707 5055 (5 LINES)



BEACONSFIELD TIMBER AND HARDWARE Pty Ltd
Lot 2 Beaconsfield Ave. Beaconsfield Tel. 9707 5055

BRICKBATS AND BOUQUETS

Bouquet : For the Apple & Teacake recipe in the June B. Banner. It was fun to make and scrumptious to eat!

Brickbats (what a pity) to people who still do not restrict their dogs to remaining at their place.

Congratulations to the producers of our Banner. It's good reading.

Bouquets & Thankyou to those who take the time to write articles or comments for the Banner. - From the Banner Team.

BEACONSFIELD - ALWAYS LEAVING, ALWAYS GONE...

Cont. from Page 3.

Even then, Beaconsfield was being seen as a place to get off the train en route for somewhere else. Now the by-pass takes the through traffic around Beaconsfield once more, and once more the little township on the creek is going quietly about its own business.

ED: John is a special guest speaker at the Progress Association A.G.M. on 29th. October 1996 at the Community Centre.

• GET FIT •

LOSE WEIGHT



*Sensational
Special*

12 Months Full
Membership

\$295

NEW EQUIPMENT
NEW CIRCUIT

OPEN 7 DAYS

LOSE WEIGHT

**BEACONSFIELD SQUASH &
FITNESS CENTRE - (03) 9707 2929**

29 Wood Street, Beaconsfield

PICTURE PERFECT BEAUTY

Initial consultation and trial free.
Professional make-up for your special day.
* Weddings * Photography Shoots * Debs * Any Occasion.
Also learn how to pamper your skin and apply
professional make-up.

Phone Mary on 9768 9089 anytime after hours.

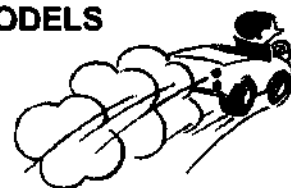
SCOTT HOLDINGS PTY LTD
For prompt, friendly service with

**BOBCAT
BACKHOE
TIPPER AND
RETAINER WALLS
TELEPHONE (03)
9707 1685
015 356385
Stuart Scott**
PAYNE RD. BEACONSFIELD

THE STEERING JOINT WE AIM TO BE THE BEST AT WHAT WE DO

BECAUSE YOUR CAR DESERVES PEOPLE WHO CARE

- ★ FULL MECHANICAL REPAIRS
- ★ SERVICING OF ALL MAKES & MODELS
- ★ ELECTRONIC TUNING
- ★ BREAK & CLUTCH REPAIRS
- ★ FRONT END REPAIRS
- ★ WHEEL ALIGNMENT
- ★ WHEEL BALANCING ON & OFF CAR



FREE PICK UP & DELIVERY LOCAL AREA
EVERY VEHICLE SERVICED AT
THE STEERING JOINT
IS DETAILED FREE! OF CHARGE
YOUR CAR WILL LOOK AND FEEL GREAT

ALL WORK GUARANTEED

**FREE
NO OBLIGATION
QUOTES**
12 WOOD STREET
BEACONSFIELD
PHONE 9707 3393

BEACY'S NOTICE BOARD

Berwick Concreting Services

PTY. LTD. A.C.N. 065 745 762

**For all types of Specialty Concreting
Slate Impressions & Imitation Brick**

PATHS, PATIOS, GARAGES, DRIVEWAYS
IN ALL TYPES OF FINISHES

===== **PHONE RUSSELL** =====

(03) 9707 3046

015 325 961

041 936 6884

MELALEUCA LODGE CNR BRUNT RD., PRINCES HIGHWAY



Modern accommodation
including deluxe spa units

Wedding Receptions
Conferences
Functions

Contact Neilma or Graeme

for Inspections or Bookings

9796 1044

MODELTECH & ELECTRONIC SERVICE

TELEVISION, VIDEO, HI-FI, VIDEO CAMERA &
MICROWAVE OVEN REPAIRS • HOBBY SUPPLIES
ANTENNA & SATELLITE DISH INSTALLATION

Shop 1, No 4 Princes Hwy Beaconsfield,

Ph: 9768 9191 Mob: 015 568 499

Prop, Barry Nugent

Berwick *Wood Machining* TIMBER CUT AND DRESSED TO YOUR REQUIREMENTS

OPEN 7-30 AM MONDAY TO FRIDAY

4/94 PRINCES HWY.
BEACONSFIELD 3807

PH. 9796 1861

Dr. Robert A. Panjkov B. D. Sc. (Melb.)

DENTIST

Unit 4 87 Wood Street
Beaconsfield 3807

Ph. 9707 3508

GRASS SLASHING & FARM MAINTENANCE

Bryan Park

Phone: 9707 2007

FREE QUOTES



- Fences Repaired
- Chainsaw work

- All Types of Paving
- Rubbish Removed



MINIBAH RECYCLING DEPOT

★ Free disposal of fridges, Washing Machines, Clothes
Dryers hot water services, etc. ★ All types of metals Car
engines, gearboxes, panels, etc. ★ CARDBOARD bundled
Newspapers, Bottles & Cans. OPEN 8am -4pm everyday

TOP PRICE CASH A CAN CENTRE

Enquiries call recycling depot

Quarry Rd. Narre Warren Ph. **9707 5725**



ALLIED BUILDING SERVICES

BUILDING ADVICE
BUILDING CONSULTANTS

BUILDING PERMITS

62 Main Street,
PAKENHAM 3810

Telephone (059) 414 355 or 018 341 601

Proprietor Bushy Miles

BEACY'S NOTICE BOARD

Dressmaker

Alterations
Same Day Service

DENISE 9707 3340



FRENCH POLISHING, WOODTURNING, ANTIQUE FURNITURE
RESTORATION, GENERAL FURNITURE REPAIRS,
HANDCRAFTED ITEMS MADE TO ORDER.

ROB & ANNETTE PH: (059) 43 2526 ALL HOURS

B

ELKE BEECHER

A.D.W.S., B.A. (Psych) Grad. Dip Couns. Psych.

COUNSELLING

Personal and Emotional Issues

Ph. (03) 9796 2668

ELECTRICAL CONTRACTOR



Domestic, Commercial,
Industrial
installations and repairs

PETER STEELE - R.E.C. 8772

Phone (03) 9707 4906

Mobile 018 392 370

23 Hudson Street, Beaconsfield.

TYREPOWER

RAY LAWN
Proprietor

BERWICK TYREPOWER

Enterprise Ave., Berwick, Vic. 3806
Tel (03) 9707 3177 Fax: (03) 9796 1836



ROMAN

COMPUTER SYSTEMS PTY LTD

ACN 069 144 654

- ◆ IBM & Macintosh
- ◆ Computer Hardware Repair
- ◆ Software Support & Training
- ◆ Networking & Remote Communications

Mark Roman Systems Engineer

6 Loveridge Walk Berwick 3806

Ph: 9796 2302 Fax: 9707 5376

MOWING AND SLASHING

- * Small to Large properties
- * Grass pick-up or evenly scattered
- * Also Rotary Hoeing
- * Small 4WD Front end loader for hire

Phone Graham for a quote on

9796 1297 or 0418 563456

ENTERPRISE

SCREENS
&
SECURITY DOORS

Hollands, Vertical Drapes, Venetians
Canvas Blinds

62 Enterprise Avenue
Berwick 3806

Phone 9796 1088
A.H. 9796 1379

BEACY'S NOTICE BOARD

★ SCREENINGS

★ SAND

★ SOIL

★ CRUSHED ROCK



★ RED GUM CHIPS

★ PINE BARK

★ LIMIL

★ CEMENT

413 PRINCES HWY. OFFICER 3809 PHONE (059) 43 2201

After Hours

Graham English 018 101 676

Doug Keith (059) 962 627



**BEACONSFIELD
PHYSIOTHERAPY
CLINIC**

Nathan Feldman

B. Sc. (Monash) B. App. (Physio)

Vincent Chan

B. App. Sc. (Physio.), M.A.P.A.

Grad. Dip. in

Exercise For Rehabilitation

Physiotherapist46-50 Princes Highway
Beaconsfield 3807**PH: (03) 9796 2833****AH: 018 538 198**

BEACONSFIELD PLUMBING SERVICES

R.A. & C.J. HORE PTY. LTD. A.C.N. 005 398 701 Lic. No. 23339

YOUR PLUMBING PROFESSIONALS

Domestic * Commercial * Industrial

SERVICING ALL SOUTH EASTERN SUBURBS

Ross & Cheryl Hore

6 Horner St.

Beaconsfield 3807

Ph. 0414 606 222

A.H. 9707 2832

Fax: 9707 2832

ASHLEY'S CAR DETAILING

Cutting and Polishing

Carpets and Seats Steam Cleaned

Engines Steam Cleaned - Vinyl Protection

Ming Car Protection

Boats and Horse Floats

Rust Proofing



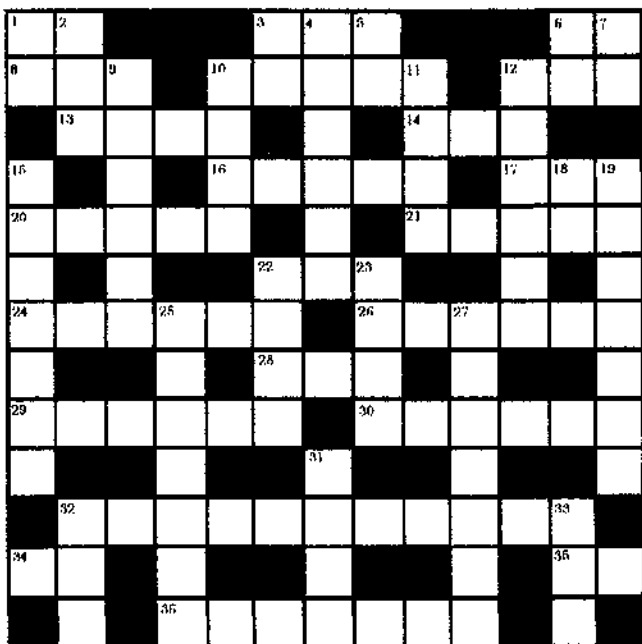
BEACONSFIELD

Ph: 9707 1493

Mob: 015 36 3465

CROSSWORD No. 7

by Dr. R.C. Webb

**Clues****ACROSS**

- | | |
|-----------------------------|----------------------|
| 1. Notice (2) | 12. Number (3) |
| 3. Choose (3) | 13. Goddess (4) |
| 6. A call for attention (2) | 14. Musical note (3) |
| 8. Man's name (3) | 16. Reward (5) |
| 10. Company (5) | 17. Coarse loam (3) |
| | 20. Impel (5) |
| | 21. Coral reef (5) |

DOWN

- | | |
|---------------------|------------------------------------|
| 1. Near (2) | 6. Personal pronoun (2) |
| 2. Musical note (3) | 7. Upon (2) |
| 3. Gold (2) | 9. A family who ruled Florence (6) |
| 4. Courteous (6) | 10. Tie up (4) |
| 5. Preposition (2) | 11. Excuse (4) |
| | 12. Horde (6) |
| | 15. Naval Officer (7) |
| | 18. Indian plant (2) |
| | 19. Haemophiliac (7) |
| | 22. Pip (4) |
| | 23. Lump of turf (4) |
| | 25. Laugh (7) |
| | 27. Speak (7) |
| | 31. Carry (4) |
| | 32. Copy (3) |
| | 33. Attempt (3) |

David Burchill

Advanced Dental Technician

Dental Prosthetist

(Opposite RSL.)

24 Langmore Lane,
Berwick 3806

Tel: (03) 9796 1543



Akoonah Park BERWICK

**Produce, Trash &
Variety Market**

EVERY SUNDAY

Opens 8.30am. to 1.30pm.

UP TO 240 STALLS

Family Market

Free entry

Phone Bookings on

9796 1455

Keogh's Pharmacy

OPEN 7 DAYS A WEEK

Mon. - Fri. 9am. - 9pm.

Sat, Sun. 9am. - 6pm.

Public Hol. 9am. - 2pm.

Public Fax Service 9796 1645

for

HOME DELIVERY

9707 5187

Agent for:
MEDIBANK PRIVATE
A.N.A.
LATROBE
YARDLEY COSMETICS
CONSTANCE CARROL
AUSTRALIS
FRENCH PERFUMES

Invalid Equipment for Hire
or Sale.
Ear Piercing
Pregnancy Testing
Photocopy Facilities
Fax Facilities

Agent for: KODAK

24 exp film \$7.95

Reprints 1/2 Price for 10 or more

1/2 price Enlargements : 20 x 25cm

**Shop 2/16 - 24 Princes Highway
BEACONSFIELD**

CHARLES GAMBLE

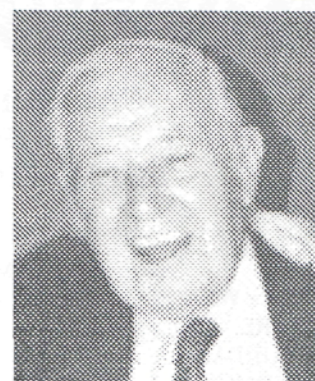
Written by Jack Rae

Charles Gamble was born at Dookie, January 1908. His life was spent on the land commencing as a jackeroo and he then managed several properties. For many years they lived at Werribee where he worked for the C.S.I.R.O. He returned to live and retire in Berwick 28 years ago and became very involved with community work.

The Berwick Benevolent Society of which he was Secretary and Life Member received his full support. Berwick Masonic Lodge was another of his interests and of course the Berwick Agricultural Society also received assistance. He was a committee member and also a Life Member of the Agricultural Society.

Perhaps his greatest interest was Akoonah Park. For 26 years he served on the Committee of Management, responsible for the planting of most of the new trees in the park. Charlie Gamble took a very keen interest in the overall management and supplied finance when funds were in short supply for development works.

We attribute the success of the



Above:- Charlie Gamble.

Sunday market to his foresight and drive in establishing this facility thereby creating funds to continue to upgrade the Park and providing donations to worthwhile organisations in the District.

It would be true to say Charles Gamble was a great benefactor to this community. The Gazebo at Wilson Park he built in memory of his wife, Alice. The Gates at the entrance to Wilson Park he again donated. The Edwin Flack Monument in high street all benefited by him.

He was truly a great citizen of this district and we shall miss him. We shall also be thankful that he passed this way for us all to share part of his life with us.

AN ANGEL WEEPS

A call from the wild,
A silent plea;
Don't leave me now
you gotta help me.
I'll come today
But I'll leave tomorrow,
You take the lead
But don't make me follow.
A tepid stream
Flows right by,
The only noise it makes -
A silent cry.
Feeling pain.
Alone tonight.
Flowers die.
Birds take flight.
In amidst
The darkness deep
An angel stirs,
I hear her weep.

Written by Naomi Harris

Goodfellows

**YOUR LOCAL SUPERMARKET AND
BOTTLE SHOP IS OPEN THE
FOLLOWING TIMES**

	SUPERMARKET	BOTTLE SHOP
MON - WED	8.00AM - 7.30PM	9AM } Till
THURS - FRI	8.00AM - 8.00PM	8AM } Closing
SATURDAY	8.30AM - 7.00PM	10AM }
SUNDAY	9.30AM - 5PM	10AM- 5.00PM

Watch out in your mail for our weekly specials
in groceries and liquor

Owned and operated by Has and Kittie Patel
who live with their family in Beaconsfield.

Cheers

20 Princes Highway
Beaconsfield 3807

**BOTTLE
SHOP**

PH. 9707 1092

RAINFALL IN BEACONSFIELD

(Written by Dr. R.C. Webb)



After reporting in May (Banner, Vol 8, No. 3) Winter rainfall has brought the figures above average.

June Rainfall was only moderate until the 23rd June.

when two days with heavy falls were recorded - 18.8mm on the 23rd and 23.0 mm on the 24th. Total rainfall for June was 80.5mm with 16 days on which rain fell.

July had steady rain, but the last three days recorded, 13.0mm, 39.1mm and 6.5mm (58.6mm in the three days) giving a monthly total of 112.6mm with 22 days on which rain was recorded.

The progressive rainfall for the first seven months of 1996 is 512.7mm; this is higher than average, but not as high as the first seven months of 1995, when 577.8mm were recorded.

CRIME REPORT



APRIL

Glissman Rd	Willful damage-house	Letterbox
Princes H'way	Criminal damage-shop	Door
Wallace St	Theft from motor vehicle	Number plates
Princes H'way	Theft from motor vehicle	Number plates
Beac-Em'd Rd	Theft from horses in paddock	Seven rugs
Stella St	Criminal damage	Child Care Centre
Kenilworth Ave	Theft from motor vehicle	
O'Neil Rd	Theft from farm	Electric fence charger
Lyle Ave	Criminal damage-Pri School	Six windows
Kathleen Crt	Burglary-house	Computer equip, jewelry

MAY

Princes H'way	Theft-house	Watch, liquor
Lyle Ave	Criminal damage-Pri School	Window
Abbeydale Crt	Theft of motor vehicle	
Glissman Rd	Burglary-house	VCR, fireman
O'Neil Rd	Theft-garden shed	TV, VCR, trailer

JUNE

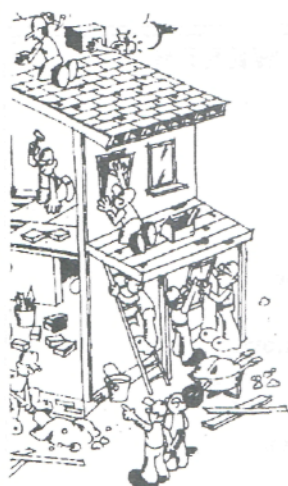
Glissman Rd	Theft-carport	Chainsaw, clothes dryer
Glissman Rd	Burglary-house	Nil
Wallace St	Burglary-Medical Centre	Prescribed drugs

JULY

Ferncroft Crt	Theft from motor vehicle	Mobile phone
Princes H'way	Damage to Police 4 wheel drive	
Princes H'way	Burglary-unit	Liquor, painting
Lyle Ave	Burglary-Primary School	
Railway Ave	Theft of motor vehicle & damage	

GREAT DEALS

ON ALL YOUR HOME IMPROVEMENTS NEEDS



- ★ Redgum Sleepers
- ★ Western Red Cedar W'boards.
- ★ Baltic Pine W'boards.
- ★ Jarrah & Karri Flooring.
- ★ Canadian Oregon
- ★ Treated Pine Boards & Posts.
- ★ Large Range of External & Internal Doors.
- ★ Timber Decking (various species)

DELIVERIES TO ALL
AREAS DAILY

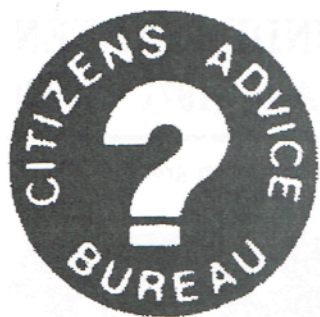
So for Friendly & Efficient Service Call in
and See the Boys at

VAN STEENSEL TIMBERS PTY. LTD.

LOT 1, PRINCES HIGHWAY, OFFICER 3809
or phone

(059) 43 2371

Fax: (059) 43 2284



CITIZENS ADVICE BUREAU

68 Main Street,
Pakenham

WE NEED YOU!

The Pakenham Citizens Advice Bureau is calling for Volunteers for their Information and Referral Centre. This is a free impartial and confidential community service.

Voluntary C.A.B. workers are involved in a range of activities. Most deal with a variety of individual enquiries but people are also required to help with administration work and information files.

To become an interviewer there is a skills training course to cover interviewing, information work and community development which is a TAFE course - no exam required just an assessment of ability in these areas.

Do you want to know more? Contact Pakenham Citizens Advice Bureau on (059) 412 377 or call in at the Resource Centre, 68 Main Street, Pakenham to arrange an appointment. The C.A.B. hours are 10am to 3pm Monday to Friday.

Note this date - Wednesday 21st August, that's our AGM meeting at 8pm in the Uniting Church Hall, Pakenham when the guest speaker will be the Reverend L. Fawcner from the South Eastern Food Bank and as there is talk of a food bank coming to the area this speaker should interest all agencies and members of the community. We look forward to seeing you there.

THE GREAT FLOOD OF 96.



Above:- Cardinia Creek in flood.

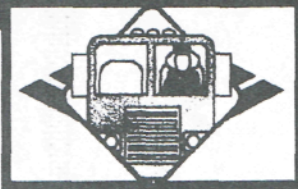
Tuesday 30th July was a wet day to remember in Beaconsfield. Whilst the water that came down may not have broken any records, the water that came up broke the banks of the Cardinia Creek in many places throughout Beaconsfield and surpassed previous recorded levels.

The football pitch at Haileybury turned into a water polo ground, the Bob Burgess Reserve gained new sand pits for children from silt washed up from the creek bed. The newly planted trees for the new park South of Beaconsfield were nearly washed away. Older, more established gum trees toppled over into the creek because of the soil saturated under them and the strong winds pushed them over. Rarely does the high ground South of the creek ever flood but it did this time as well as the road being cut between the Cardinia Creek bridge and the railway line.

Cont. on page 22

\$100 Opening Special

SMALL GROUPS
BUS CHARTER



CONDITIONS APPLY

JULY &
AUGUST
6 HOUR
ROUND TRIP

GEMBROOK TOURIST TRANSPORT

- Night Out, Day Tour, Special Events, Team Transport.
- Sports, Social & Special Interest Groups, Families.
- 18 Seat Bus with Airconditioning & Cloth Seats.



Leonora & John COX (059) 427 729 9am - 5pm



BEACIE SERVICE CENTRE

SERVICING & MECHANICAL REPAIRS TO
ALL TYPES OF VEHICLES INCLUDING:



- * 4x4 & Light Commercial
- * Tune-Ups
- * Brake & Clutch
- * Front End Work
- * Exhaust Systems
- * Transmissions
- * Motors

Licensed Roadworthy
Tester



MAJOR & MINOR WORK

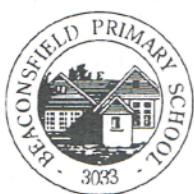
Contact Gary
or Ross

BEACIE SERVICE CENTRE

122 PRINCES HIGHWAY BEACONSFIELD

- All Guaranteed -

(03) 9796 1401



NOTES FROM BEACONSFIELD PRIMARY SCHOOL

(Written by Principal, D. Lockwood)

"CHALLENGE OF THE MINDS" CHAMPIONS

Beaconsfield Primary School Senior students won the Most Creative Presentation in the recent Challenge of the Minds in the Pakenham/Berwick School District.

Congratulations to team members (pictured below): Matthew Goldsworthy, Melissa Robinson, Shaun Hooper, Rebecca Hewat, Matthew Taylor, Ben Miller, Danielle Steele & Bianca Hamilton.



BEACONSFIELD PRIMARY SCHOOL NOW TAKING ENROLMENTS FOR 1997

Those of you with Pre-School children will be considering your child's schooling for 1997 very carefully. If your child will turn five by 30th April, 1997 they are in the age group considered to be ready to start school next year.

Beaconsfield Primary School situated in a delightful semi-rural setting, offers a quiet, caring learning environment to all its students. We provide excellent programs in all areas of the curriculum with up to date resources including computers, the Internet and Interactive T.V. The school program is well supported in the vital areas of literacy and numeracy with parent workshops, reading recovery, family Maths, Literature Club and a well resourced Library.

For busy parents we can offer After School Care program on

the premises which operates until 6.30pm each night. This service is available on an occasional or regular basis at very reasonable rates. The children are offered interesting activities from art/craft to active games, to make their afternoon fun and worthwhile.

We have planned an interesting transition program for Term 4 to give your youngster plenty of opportunity to get to know all about their new school before they start next year. Let us know if you'd like to be on our mailing list or visit us this term (with or without your pre-schooler). You can ring the Principal, Di Lockwood on 9707 1510 for any further details.

BEACONSFIELD KINDERGARTEN CELEBRATES 25 YEARS (1971 - 1996)

Are you pictured below in this Kindergarten group of 1971?



The first Kindergarten teacher, Mrs. Vincent has made the work of compiling a student register of the 25 years much easier. Today, photo's of kinder groups have the students names printed underneath but not so in 1971. However, Mrs. Vincent left photo's from her 11 years with all the names printed on the back.

Plans are well underway for the celebration of 25 years of Beaconsfield Kindergarten. Letters have been distributed to as many people as possible. If you know of any family/ past students who have moved out of the area, be sure to mention that we are planning a great day.

SATURDAY OCTOBER 12TH, 1996

** Kinder open - 10am - 2pm

** Family Supper Dance - 7pm - 12pm. \$20 per family (Door prize included) B.Y.O. plate of supper to share. Entertainment and music by "Afraid & Shy." Venue: Narre Warren Community Centre.



Photo's and memorabilia on display all day.

COMMEMORATIVE MUGS AND GLASSES are available to purchase.

For all enquiries regarding events of the day, to purchase family tickets or buy a commemorative mug or glass ring the Kindergarten 9707 1144.

ANSWERS TO CROSSWORD NO 7

ACROSS:- 1. Ad 3. Opt 6. Ho 8. Tom 10. Troop 12. Ten 13. Hera 14. Lah 16. Prize 17. Rab 20. Drive 21. Atoll 22. Sec 24. Icicle 26. League 28. Ego 29. Around 30. Diddle 32. Alkalescent 34. Up 35 Ra 36. Express.

DOWN:- 1. At 2. Doh 3. Or 4. Polite 5. To 6. He 7. On 9. Medici 10. Tape 11. Plea 12. Throng 15. Admiral 18. Al 19. Bleeder 22. Seed 23. Clod 25. Chuckle 27. Address 31. Bear 32. Ape 33. Try.

THE BONFIRE IS ON AGAIN ON CUP EVE

For more information contact Willem Boon on 9707 5053

Beaconsfield Sport

BEACONSFIELD TENNIS CLUB NEWS

(Written by M. Chatfield)



Margaret Chatfield

BEACONSFIELD TENNIS CLUB NEWS MIDWEEK LADIES AUTUMN SEASON RESULTS

Premiers :- Thursday Double Rubbers Section 2 Team Members:- Joan McPherson, Corrie Van Diemen, Dianne Goodear, Melisa Nouza, Heather Saunders. Runner Ups:- Tuesday Section 4. Team members :- Glenda Gorton, Brenda Douma, Lorraine Manson, Carol Ronalds, Teresa Stutsel, Joan Horton. Emergency for finals.

CLUB CHAMPIONSHIPS - JUNIORS

Due to the large number of juniors wishing to participate in the Club Championships an extra day was required to complete the doubles events. Finals day, after finals were completed. Presentation of trophies to winners and Runners Up were made by Co-ordinator Heather Saunders, Coach Robert Keighery and Margaret Chatfield. Following Presentations Juniors competing, family and friends were invited to a sausage sizzle lunch. The support for Juniors was very good throughout championships. Results were as follows:- Boys A Single -

Winner - Travis McKay. Runner Up - Drew Clarke. Girls A Singles - Winner - Terri Anne Leembruggen. Runner Up - Simone Wearne. Boys B Singles - Winner - Philip Cahill. Runner Up - Warren Pearson. Girls B Singles - Winner - Kelly Kozaris. Runner Up - Cassie Evans. Boys A Doubles - Winner - Ben McKay / Philip Cahill. Runners Up - Travis McKay/Drew Clarke. Boys B Doubles - Winner - Warren Pearson/Philip Cahill. Runner Up - Matthew Leonard/Matthew Lucas. Girls B Doubles - Winners - Kelly Kozaris/ Sarah Moody. Runner Up - Cassie Evans / Laura Mills. Boys C Doubles - Winners - Matthew Taylor/Matthew Goldsworthy. Runners Up - Jay Seddon/Michael Gramson. Girls C Doubles - Winners - Melinda Tye/Rochelle Amer. Runners Up - Aliesha Parsons/Naomi Harris.

CLUB LOGO COMPETITION

Congratulations to Junior, Scot McPherson for his winning entry. Scot will be awarded a club logo tennis shirt for his winning entry.

PENNANT 1996

Our Saturdays 2 "Grade 2" Pennant teams have finished on top of the ladder in their individual sections. We wish both teams well in the finals. Grade 2 Section 1 Team members:- Jason Kruger, Scott McKenzie, Graham Charlton, Bruce Ferguson. Grade 2 Section 2 Team members:- Greg Menzel, Andrew Peart, Warrick MacGowan, Paul Osborne.

B.A.G. COMMITTEE

Next coming event is a Bus Shopping Spree on Saturday 7th September. Cost \$30.00 per person includes a 2 course

BEACONSFIELD FOOTBALL CLUB

(Written by L. Canning)

The 1996 home and away games have drawn to a close with Beaconsfield Football Club looking forward to an exciting and successful final series. This year the club have all four teams in the West Gippsland F.L. finals for the first time.

The club has also retained the West Gippsland Championship trophy which it won for the first time last year. This is a credit to all players, coaches, trainers and support staff involved in putting our teams on the ground each week. The strength of the juniors coming through the ranks is evidenced by the fact that of our senior team in recent games, 13 had come through

restaurant lunch and visiting 8 to a possible 11 outlets. Come and treat yourself to an entertaining and fun day out buying a wide range of items at genuine bargain prices. Bus will be leaving Tennis Club at 8am returning approx. 6pm. Contact Margaret Chatfield 9707 2016 if interested in going. This is for members and non members. So make sure you book your seat today.

Dates To Remember - October 19th - Presentation and Trivia Night. - November 8th - Annual Street Stall.

NEWSFLASH!!

On the 29th July our club President Russell Clay and wife Fiona became proud parents of a 7lb 5oz baby boy Liam Scott. Congratulations to Teresa and Bob Stutsel on becoming parents of a baby girl Julia Adele.

COURT HIRE

For Court Hire - contact Margaret Chatfield 9707 2016.

our thirds (U/17s) team.

On an individual basis, Scott Hilton (seniors), Anthony Jones (U/17's) and Ryan Donaldson (U/15's) have also taken League goalkicking honours in their grades.

Another of the Jones boys, former Beacy player in Austin, continues to perform tremendously well for St. Kilda seniors in their quest for a finals berth. His cousins Anthony & Aaron have both played senior football for Beacy at various times this season.

With the home games now completed the club is grateful to all those people that worked so hard on these days, whether in the canteen, bar, ground preparation or numerous other tasks that always need doing. The club has also been fortunate to have the support of a large number of sponsors and award donors that enable it to play its part in providing recreation and entertainment for the local community.

Beaconsfield Football Club would welcome all locals to come along to watch the team take part in the finals and hopefully bring some more premiership flags to the town. The seniors are seeking their first since 1981 and hope to go one better than the runners-up finish in 1995.

The Seniors, U/17's & U/15's will be involved in qualifying finals games on Saturday, August 24th at Nar Nar Goon, and the reserves go straight through to 2nd Semi Final on Saturday 31st August at Cora Lynn. Depending on the results of the first week the other three teams will also be hoping to play on this date and venue.

FOR SALE

CURTAINS - Neutral Tonings. Full blackout lining. 7ft drop. Pinch pleated. 2 curtains to fit 240cm width windows and 4 curtains to fit 170cm width windows. Excellent condition. \$60.00. Phone 9707 2832.

SIMPSON NOVA Electric Wall oven. Approx 5 years old. Excellent condition. \$290. Ph :- 9707 2832

NOMAD 'ELECTRIC SHOPPER' As new, 30km range. New batteries. Hood. \$1200 ONO (059) 443 157 AH



PYREX CONSOLE GAS HEATER. 6 Burner with Flue Kit. Good Condition. \$190. Ph :- 9707 2832.

RESIDENTS DECIDE TO STAY.

Welcome to Inge & Pete, who after renting for a couple of years have decided that Beaconsfield is a great place to live. They recently purchased a house in Beaconsfield.

COMING EVENTS**BERWICK/PAKENHAM HISTORICAL SOCIETY INC.**

Past President : Helen Hudson & Members cordially invites you to Lunch at Clover Cottage, on Tuesday October 1st., 1996, at 12.30pm. \$25.00 per head. Seating is limited. Enquiries to H. Hudson Ph:- 03 9707 1944

UPPER BEACONSFIELD PRE-KINDER

The Upper Beaconsfield Pre-Kinder in McBride Rd., is celebrating its 40th Anniversary with a variety of activities.

A delicious luncheon at Clover Cottage has been organised for Wednesday August 28th, so book now as tables are filling fast.

A garden make-over is taking place at the centre and the children are drawing on ceramic tiles which will be laid to form a pathway to be unveiled next term and special drinkware has been designed and produced by popular local potter, Jenny Conn, all to commemorate the occasion.

So if you, a friend or perhaps your child attended the McBride Rd. Centre, you are invited to help us celebrate.

Please call Christine Cunningham on (059) 444 096

THE GREAT FLOOD OF 96.

Cont. from page 19.



Above:- Cardinia Creek in Flood just South of the Freeway

Under the railway bridge the flood level marker nearly disappeared as the water lapped its way underneath. The authorities were quick to come on the scene and remove fallen trees and inspect the flooded road ways. It is noted that local residents Keith and Anne Goodman recorded the flood levels were higher at their property than they have ever been in the past 12 years.

JH

Like to advertise in Beacy's own paper "THE BANNER"

Fill in the form and leave it at the Post Office.
Name of Advertiser.....

Phone Number.....
Address to which account is to be sent.....

Message.....

Rates for advertising:

1/4 page in a single issue \$30.
1/2 page in a single issue \$55.
Full page in a single issue \$90.

All above rates 20% discount if paid in advance.

Beacy's Notice Board \$10 per issue
Market Place \$1 per line per issue.

CLOSING DATE FOR NEXT BANNER IS THE 30th. SEPT. 1996**DONATIONS**

Beaconsfield Cub Scouts are in need of lawnmower, whipper snipper, and plastic stackable chairs. Perhaps you may just have them lying around and in need of a good home. They would be well looked after and gratefully appreciated. We can come and pick-up.

Phone: Trish- 9707 4906.

BIRTHS

CLACY - CONKIE A baby boy was born to RUSSELL & FIONA on 29.7.96 at South Eastern Private Hospital. Weighing in at 7lbs 5oz, by the name of LIAM SCOTT.

LOCAL RADIO 3SER

Local identity John Baker of the Willows Nursery can now be heard on local radio 3SER 97.7FM. on Wednesdays from 2.30pm with all your garden tips.

John a qualified horticulturalist and teacher of horticulture can be contacted live on radio by phone 9796 7977 or at other times at the nursery on 9707 4852 for garden advise.

ZEN DO KAI Freestyle Martial Arts ~ Kids Karate

Self Protection
Gain confidence
Self discipline

Individual goals
Improve concentration
Improve strength of mind and body

Schools for ages 7-12 yrs inclusive
Beaconsfield 4.30-5.30
Wed afternoon



Zen Do Kai established for 26 years - over 1000 schools in Aust. Schools run by a government licensed 3rd Dan black belt teacher

For enquiries & registration of a **FREE** lesson contact Val Willson (03) 9702 7220 or Mbl. 018 994 626