

Beaconsfield Banner

Vol.3 No.4

Published by the Beaconsfield Progress Association

August 1991.

PRES. ALBIE JONES Ph. 707 2141 SEC. TED HORTON Ph. 707 1313 NEWSLETTER CO-ORDINATOR MELVA BEHR Ph. 707 2235



Shire of
Pakenham

What's Happening at Council

Shire of Pakenham by Councillor Peter Meeking.



Peter S Meeking,
P.O. Box 130,
Berwick.3806
(059) 44 3568

COUNCIL ELECTIONS

With slightly in excess of a 70% vote Keith Ewenson was recently re-elected for a further three (3) year term as one of your 3 Riding Councillors. Congratulations to Councillor Ewenson!

SHIRE PRESIDENT

Councillor Charles Rundell from the Iona Riding will be the Shire President for 1991/92 Council year.

Former Shire President, Councillor Pam Wyley who has led the Shire so admirably over the past twelve months has retired from the Council and is to intensify her studies to become a Minister within the Uniting Church. Pam Wyley will be greatly missed at the Shire of Pakenham.

COMMUNITY CENTRE

Cns. Ted Owen, Keith Ewenson and myself have been working closely with Bernie Miles and a number of other Beaconsfield residents to endeavour to obtain a much needed Community Centre in Beaconsfield.

Already it has been decided that the former Pakenham Library building will be moved to Beaconsfield as a short term solution until a permanent home can be established.

The only task left is to find a suitable location.

There is a tremendous interest in community activities in Beaconsfield and a house is needed for such groups as the Toy Library, Playgroup, Community Group, Neighbourhood Centre and the Progress Association to name but a few. The need is urgent, and a solution as to location must be found forthwith.

TOY LIBRARY

Thanks to the tremendous efforts of Margaret Boon and a number of helpers, a Toy Library has now been established in Beaconsfield. The Shire was able to provide \$500 to assist in this operation, but much of the other funding was obtained through community fund raising efforts. As a short term measure the Centre will operate from the Kinder/IWC Centre.

A WORD FROM THE PRESIDENT

From the President of the Beaconsfield Progress Association.

Some of the townspeople may have noticed that the railway station has been painted, and it looks very nice after being covered with spray paint graffiti for a number of years. It was painted by volunteers from Beaconsfield organised by the railways painters (2) and the Progress Association on Saturday, 29th June.

There were many volunteers from the people of the town and some girls - yes girls - from

St. Francis Xavier College. We also had shortbread biscuits, scones, jam and cream supplied for morning tea, by Mrs Dorothy Simpson, sausages donated by Brian Parkes and cooked, with onions, by the Scout Group.

The whole effort was a truly great day put on by the people of Beaconsfield. All I can say is "CONGRATULATIONS TO ALL!".

NEXT MEETING WEDNESDAY 28TH AUGUST AT BEACONSFIELD PRIMARY SCHOOL HALL COMMENCING AT 7.30pm

Mr. Warwick Bayley, Shire Engineer will be the Guest Speaker at the next Beaconsfield Progress Association meeting on Wednesday, 28th August in the hall at the primary school.

We will be asking for an update on matters such as:-

The roundabout at the Beaconsfield-Emerald Rd and Inglis Road junction.

What will be done in future at the Wood Street/Main Rd junction

The traffic controls in Souter Street and the draining of the Jim Parkes Reserve.

Footpaths and lighting on Beaconsfield Avenue

Tree planting and beautification in conjunction with the new road works.

There will be many other matters people will want to raise so please come along and put your questions to the speaker.

We look forward to seeing you all at our next meeting commencing at :-

7.30pm Cuppa and Mingle.
8.00pm Guest Speaker.



**Shire of
Pakenham**

What's Happening at Council
Cont. from page 1.

FOOTPATH BEACONSFIELD AVENUE, NORTH SIDE.

Council is considering a proposal to form a concrete footpath in Beaconsfield Avenue which will be partially funded by the Council and partially funded by abutting residents. More detail will be available should the funding be finalised.

KERBSIDE RECYCLING

Council has now agreed to call for tenders for the provision of roadside recycling. The full amount of the tender will be considered in the forthcoming budget discussions and will hopefully be funded. Pakenham Council is one of but a few Municipalities which has been unable to provide this service to date.

Satisfactory discussions have been conducted with the scouting organisations so as to offset any financial losses which the scouting groups may incur as a result of the Shire Scheme.

Councillor Peter Meeking

**NOTES FROM
CR. KEITH EWENSON**



Keith Ewenson.
(059) 44 3372

DUAL OCCUPANCY

The first application for dual occupancy in Wallace Street was considered by Council at our last meeting. Due to the strong local opinion opposing the application, the Council gave a

determination to refuse the permit. We have acted on the assumption the existing residents have the right to say what they desire for their own area. It would be interesting to determine how widespread opposition is held to dual occupancy.

**FREEDOM OF
INFORMATION**

We are currently looking at ways to apply the Freedom of Information to Local Government. It may be necessary to create a local law to protect certain information givers, prior to granting Freedom of Information.

**BEAUTIFICATION OF
MAIN ROAD**

You have seen the commencement of the beautification program. Last year we approved \$10,00 for the installation of a watering system on the main road. This was thought to be essential to effective beautification through planting.

**NEIGHBOURHOOD
HOUSE**

We continue to negotiate for the opening of the Neighbourhood House by January, 1992.

**O'NEIL ROAD
DRAINAGE**

We have given a high priority to correcting the O'Neil Road drainage problem as it affects the town. Hopefully a scheme will provide a solution.

Cr. Keith Ewenson, J.P.

**ELECTION RESULTS IN
BEACONSFIELD**

Elections took place on August 3rd and our local councillor Keith Ewenson was re-elected. Congratulations Keith. We also congratulate John McNeil for gaining such a high vote in Beaconsfield. Ewenson 425, McNeil 447, with 46 informal.

This must indicate to the Council that Beaconsfield residents are not happy with the way funds are distributed in the Beaconhills Riding and we look forward to receiving an equal share from now on. For so long we have been in the shadow of Upper Beaconsfield and Berwick, but let's not forget that we are the first township in the Shire when entering from Melbourne and should indicate

pride in our Shire. We should have the trees we have been asking for for years, we should start to implement some of the forward plan for Beaconsfield and we need to mould our township, with landscaping, into something that makes you feel, oh, we're home, home in beautiful Beaconsfield. Beaconsfield is beautiful. As you come down the Berwick hill and you think, gee this is beautiful, you are really looking through Berwick at the hills either side of Beaconsfield and it is this vista that gives you that relaxed warm feeling. We're proud to be living in Beaconsfield, and it's time the Shire did something for our town, and the hard working families that live here.

**A LETTER TO THE EDITOR FROM
JOHN McNEIL.**



John McNeil

Dear Ed.

I would like to take this opportunity to thank the residents of Beaconsfield for the support shown to me at the recent Council Elections.

The majority of residents showed our Council and Councillors that they are sick and tired of being the poor corner of

the shire, and as such, ask and demand that we, the residents of Beaconsfield, get our overdue share of facilities such as improved and safer roads, a Public Hall and Community Centre, to name just a few.

I ask all residents to consider getting involved or at least support any group or association in our area and work for a combined effort to get a result we can all be proud of.

Once again, many thanks to the people of the area who unselfishly helped me on Saturday, August 3, which in turn will help all residents of Beaconsfield.

Yours truly,

J. McNeil.

A GREAT LOSS TO THE BEACONSFIELD COMMUNITY



Jim Bartlett

Jim Bartlett passed away suddenly on Aug 8 1991, whilst on holidays with his family in Queensland. He was only 40 years old but he has done so much for the Beaconsfield Community.

*We'll remember the smiling face,
The sparkling eyes,
The warm "g'day",
His patience and gentleness everyday,
We'll remember him that way.*

Our sincere sympathy to Jeanette, Andrew and Elizabeth

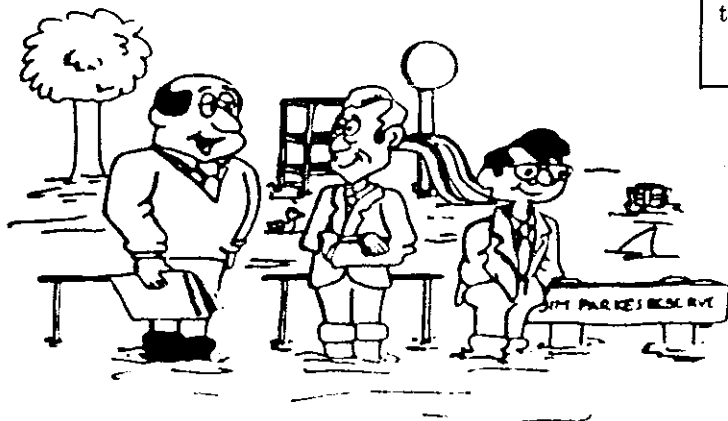
RECYCLE YOUR OLD PAPERS WASTE MINIMIZATION CENTRE

A public meeting was held on Wednesday 7th August at 8.00pm at Beaconsfield Primary School. The meeting was chaired by Mrs. Kaye Johnston who cleared up any misconceptions about the scheme. An outline of the scheme was presented stating our objectives to recycle glass, paper and aluminium cans in conjunction with the Scouts and Cubs association and the Beaconsfield School Community. We are

waiting for Council's approval of our Planning Permit Application.

The paper collection has begun. A container is temporarily situated in the staff car park. Feel free to drop off your papers.

If you would like to become involved or are able to help in any way, please contact Joe McMaster on 707 5940 AH.



BEACONSFIELD FIRE BRIGADE

The Beaconsfield Fire Brigade will once again be holding their "Bonza Bazaar" at the Fire Station, Saturday October 19th. We would welcome donations of any type of pre-loved goods for sale. For pick up contact Bev Burgess 707 1389, Tony Lukas 707 3260 or Murray Johnston 707 3341.

The ladies will have their stall laden with delicious goodies and Hot Dogs will be for sale. There will also be a stall of new clothing at greatly reduced prices. Don't forget to walk right through to the back or you may

miss your bargain. We believe in bargain prices so please come along and support your local Brigade.

Congratulations to Tony Lukas - this will also be his birthday - now Captain of the Brigade. Tony has served the Brigade since he was sixteen and has vast experience in the service.

Remember Winter is the time of many structural fires. Keep an eye on the heater, the fire place and all other sources of heating.

Don't forget - SATURDAY, OCTOBER 19TH.

Thanks Leanne for doing the comic for the Banner.

If the JIM PARKES RESERVE was drained properly children could use the play equipment all year round.

Beaconsfield Meat Supply

Sell Only Top Quality Meat

"And that's no bull"

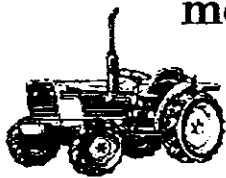
Spit hire 707 1163



Roaming Roast Spit Roast Catering -
For your next party or function,
call the Roaming Roast and let us be your host

Ph. 707 1163

For all outdoor
needs from tractors,
mowers, chainsaws,
brushcutters,
pumps, etc



Spares, Repairs & Service

Contact Peter Willis

Beaconsfield Mower & Tractor Centre

707 5368



BERWICK AUTO ELECTRICS



3/94 Princes Hwy Beaconsfield
Telephone: 796 1550

Complete Auto Electrical
Service, Change Over
Units. Discount Batteries
Truck and Machine Wiring

Also at:
29 Enterprise Ave
Berwick Ph: 707 3617



**A TIMELY NOTE FROM PAKENHAM
CITIZENS' ADVICE BUREAU inc.**
24 MAIN STREET, PAKENHAM.
3810. TEL. (059) 41 2377.

ARE YOU LOOKING FOR THRIFTY IDEAS?

When times are tough we all look for ways to cut expenses without lowering standards and the Pakenham Citizens Advice Bureau can help you. We have a book of "Money Saver" recipes and hints on how you can use substitutes for expensive cleaners as well as many more ideas to help balance the budget. For just \$2.50 you can get the book which could stretch your weekly wage, so call and check it out.

HELP AVAILABLE!

Have you ever wondered which Government Department to contact for help? Well, the Government has issued the Bureau with copies of the "RURAL BOOK" which sets out their various offices and their functions, plus how you can locate and contact their staff when you need assistance. These books are "FREE" and can be collected from the Bureau.

This year the Bureau will be offering "Tax Help" again to Salary Earners who find problems with filling in their "S" Form Returns. Five of our staff are doing their refresher course for 1990/91 at the Taxation Office and will be available, by appointment, from July onwards. Keep it in mind but remember an appointment is necessary.

For folk in the Cockatoo and surrounding areas who need transport to enable them to keep Doctor and Hospital appointments or because of an

emergency, find they need transport assistance, we now have details of a group in your area who is willing to help you.

We are always looking for ways to help folk in need and these days when many are falling on hard times, advice on how to avoid the pitfalls of financial disaster could be timely. The Bureaus in conjunction with Certified Practising Accountants have been able to arrange a "Free 15 minutes" Accountancy Advisory Service.

WINTER ENERGY CONCESSIONS! ARE YOU ELIGIBLE?

If you hold a Commonwealth Health Card, you are eligible to claim on accounts for electricity or gas billed from the end of May this year and the following six months.

You can save 15% off these Winter months and claiming is made easy as you just take your Health or Transport Concession card with you when paying your Bills and the concession will be deducted. If you reside in a Nursing Home, Hostel, Special Accommodation House or Caravan Park where you use L.P. Gas and you are a Concession Card Holder, you also may be eligible for the rebate.

If you have a query about any of the items mentioned or need help or information that seems unattainable elsewhere, contact the Citizens Advice Bureau at 24 Main Street, Pakenham. 10.30am to 2.30pm Monday to Friday.

Phone (059) 412 377

BRAIN TEASER

Two young men went to enrol for the coming elections. They gave the same surname, parents' names and date of birth, and looked exactly alike.

An official asked: "Brothers?"

"Yes," replied the pair.

"So your twins?"

"No," they answered.

Given that they were truthful, how could this be?

(Answer page 14)

Natural drugless healing ensures reliable results without side effects. Qualified advice and treatment for all health problems

**Beaconsfield
Naturopathic Clinic**

Peter N. Hansen

Naturopath

N.D. DIP. HOM. C.I. A.T.M.S.

MEMBER AUSTRALIAN FEDERATION OF HOMOEOPATHS.

**Beaconsfield
Medical Centre**

Suite 3, 39 Wallace St., Beaconsfield, 3807

Tele.: (03) 707 3892,

A.H. (03) 707 1214

Accredited iridologist, herbalist, homeopath, nutritionist, tactile therapist. Also for manipulation and all emotional problems.

Health fund rebates available



**Beaconsfield
Community Group Inc.**

(Playgroup - Playtime - Toy Library)

(Thanks to Pakenham Gazette for allowing us to copy their article)

**TOY LIBRARY OPENS AT
BEACONSFIELD**



Present at the official opening of Beaconsfield's Toy Library are (from left): Cr Ted Owen, co-ordinator Margaret Boon, Anne McCormick, Cr Keith Ewenson and Cr Peter Meeking : with (from left) Nathan Boon, Casey Stone and Joshua Dobson.

A crowd of enthusiastic parents and local residents watched with anticipation as Pakenham Shire councillor Peter Meeking officially opened the new Toy Library service for Beaconsfield.

After much hard work, the Beaconsfield Community Group has once again achieved one of their primary aims and is now able to offer families the chance to borrow, (for a two week period), a range of toys, puzzles and tapes for children up to six years of age.

Since last October, the committee - comprising Margaret Boon (co-ordinator), Julie Oates, Leanne Bowman, Sue Stanes, Angela Cooper, Lynne Slater and Rowena Mulligan have held numerous fundraising efforts to raise the necessary amount to start the library.

These have included a jigsaw toy party, raffles at Beaconsfield hotels and fruit'n nut drives. Several monetary and toy dona-

tions were received and thanks are sent to Keogh's Pharmacy, Brian Parkes Butcher, Beaconsfield Bakery, Myrtle Wilson and the Shire of Pakenham. Any donations of toys are most welcome.

The library is located at Beaconsfield Maternal and Child Health Centre (Wood Street) and will be open each Friday morning between 10.00 a.m. and 11.30 a.m.

For further details about the toy library or membership fees phone Margaret on 707 5053.

PLAYGROUP

Monday 10-11.30 a.m.

Thursday 10-11.30 a.m.

at the old Baptist Hall -
Railway Ave., Beaconsfield

Cont. Page 14

KEN BRYAN 707 3864

K.B. TRANSMISSIONS

Automatic Transmission

Specialists

31 ENTERPRISE AVENUE.

BERWICK, 3806

K.B. TRANSMISSIONS

Automatic Transmission Specialists

**31 ENTERPRISE AVE.,
BERWICK**

PHONE 707 3864



**CLEARANCE
SALE**



**PLATYPUS
TECHNOLOGY**

**NEW, EX DEMO & TRADE INS
ALL BELOW COST!**

SOFTWARE

Quattro Pro V1.0	\$160
Objectvision V1.0	\$175
Paradox V3.0	\$360
Turbo Pascal V4.0	\$ 50
HP Deskjet Plus soffonts	\$ 80
Microsoft Flight Simulator V3.0	\$ 45
Sierra 3D Helicopter Disk Technician h/d repair	\$ 45
Sitback backup	\$ 65
Design CAD 3D V3.0	\$ 75
InHouse Accountant	\$450
Supercom modem communications	\$120
	\$ 80

HARDWARE

Computers complete with warranty from	\$450
9 pin printer	\$120
360k floppy disk drives	\$ 40
VGA video cards	\$ 90
XT, AT motherboards (some new) from	\$ 80
200Watt power supplies (new)	\$ 90
Sharp MZ700 with inbuilt printer, cassette & software	\$150
Various controller cards from	\$ 20
101 keyboards (new)	\$ 85

BE QUICK! PHONE NOW

**124 PRINCES HWY
BEACONSFIELD**



**PH 7072302
FAX 7075376**

A SOBER COMMENT

It was a clear calm night on Saturday August 3rd when a certain "do gooder" resident from south of the tracks took to the streets at 10.15 p.m. with a bottle of turps in a brown paper bag. With only the best of intention of wiping off graffiti at the railway station (not wiping himself off) he proceeded with his trusty dog (also an expert on graffiti) to the station platform.

Having done the good deed of scrubbing off the scribble, he was immediately "rewarded from above" and put in the spotlight from a pulsating police helicopter no less. He immediately took a bow, thinking that he was on stage, then hurried off home with his frightened dog.

It was then that he was intercepted by a flying squad police car who caught him sober in charge of an empty bottle of turps....he had used it all on the station wall! In disbelief and amazement he was let off.

Once home he was greeted by his worried wife who thought he had drunk all the turps and started a 'blue' with disco revellers from the leisure centre!

CONGRATULATIONS to our 'men in blue' who responded so promptly to what was Beaconsfield's most serious crime in years.

He's hoping they catch the culprit that shot at the bottle shop attendant....and we hope they catch the graffiti writers too!

**PHARMACY
CHANGES HANDS
AT UPPER
BEACONSFIELD**

My name is Carol Gibson and I have taken over the Pharmacy at Upper Beaconsfield from Carole McCulloch. I have been a Pharmacist for nearly twenty years and have worked in a variety of pharmacies but have found small community pharmacy the most enjoyable and satisfying.

I have worked for Carole for two years before buying the pharmacy from her so I am familiar with the needs of the families in this area. The pharmacy at Upper Beaconsfield is a small business where we have time to "listen" and to chat and being part of the Self Care program we have information on a wide range of topics.

Since taking over the pharmacy I have reduced our prices on many lines including Baby Foods to become more competitive with the larger pharmacies.

Susan Horton, my shop assistant, has been with the Pharmacy for three years and lives in Beaconsfield. She is available at any time during the day to deliver so feel free to call us on 059 443 881 or call in and say "hello"

BEEF OR CHOPS IN SPICY SAUCE

- 500g (1kg) stewing steak or chops
- 2 tblspn flour
- 1 tspn mustard (or 1/4 tspn each of ginger, mustard, curry and mixed spice)
- 1 carrot, sliced
- 1 onion, sliced
- 2 tblspn worcestershire sauce
- 1 tblspn vinegar
- 1-1/4 cup water
- 1 tspn sugar
- 1 tspn salt
- 4 tblspn tomato sauce or 1 tblspn tomato paste

Mix flour and mustard. Chop meat, roll in flour and place in casserole cover with carrot and onion. Combine all other ingredients, pour over meat. Cover and cook in moderate oven 1-1/2 2 hours.

Variations:

1. Add 2 tblspn plum jam and 1 tblspn lemon juice
2. Add 1/2 cup sultanas

IF YOU WOULD LIKE MORE EASY THRIFTY RECIPES LIKE THIS. GET SOME SHOPPING TIPS AND HANDY HINTS, THEN PURCHASE THE BUDGET BOOK FROM THE CITIZENS' ADVICE BUREAU, 24 MAIN STREET, PAKENHAM FOR JUST \$2.50. VERY GOOD VALUE AND THE MONEY WILL GO TO A GOOD CAUSE!



J.P.S. ELECTRICS

ELECTRICAL CONTRACTOR

*Domestic, Commercial, Industrial
installations and Repairs*

PETER STEELE
- R.E.C. 8772

Phone 707 4906

23 Hudson Street, Beaconsfield.

Keogh's Pharmacy

OPEN 7 DAYS A WEEK

Mon. - Fri. 9am. - 6.30pm
Sat, Sun. 9am. - 1.00pm
Public Hol. 9am. - 1.00pm.

for
HOME DELIVERY
707 5187

Agent for:
H.B.A.
MEDIBANK PRIVATE
HEALTH AUSTRALIA
A.N.A.
LATROBE

Invalid Equipment for Hire
or sale.
Ear Piercing
Pregnancy Testing

Agent for: **KODAK**
Reprints 1/2 Price for 10 or more
1/2 price Enlargements : 20 x 25cm

**Shop 2/16 - 24 Princes Highway
BEACONSFIELD**

STORM DAMAGE

The Beaconsfield Fire Brigade was kept busy recently when a storm lashed Beaconsfield.

The west bound lanes of the Beaconsfield Berwick road were blocked for about four hours whilst a large tree was cleared from the road. Trees were uprooted, stripped, torn and split by the extremely high winds.

A resident in Souter street had a "what am I going to do now?" experience when a tree fell through the roof and the Fire Brigade spent hours helping clear the debris. One Officer fell and received bad bruizing during this work.

Another house in Wood St had the S.E.S. removing a tree nearly 24 hours later so as the power could be restored.

Thank you to all our ever willing fire attendants. You do a great job for the people of Beaconsfield and the surrounding areas with not much thanks. We do appreciate you! Thanks again!

THE FOLLOWING ARTICLE IS MOST IMPORTANT TO ALL RESIDENTS.

WHAT HAPPENS WHEN YOU CALL THE FIRE BRIGADE'S EMERGENCY NUMBER 707 2828?

As the fire station is not permanently manned, the emergency phone number will ring at four homes in the area as well.

When your call is answered, tell the operator the following:

- * Type of emergency
- * Location
- * Your name and phone number

The emergency phone operators have a special button on their phone that allows them to activate the siren at the fire station to alert the firefighters.

If your phone call is not answered by our operators within 30 seconds, the siren at the fire station will be automatically activated. **DO NOT HANG UP**, the first fire fighter at the station will take your call (this may take 2-3 minutes).

VIOLENT ARMED ROBBERY AT BEACONSFIELD

A man armed with a gun held up the Bottle Shop Attendant at our local bottle shop at 10.15 p.m. on Saturday night, August 3rd. Even after shooting out the phone, the gunman shot Mick the attendant in the thigh to give himself more time before the police could be notified.

Mick - all the best for a speedy recovery.

STATION PAINT-IN A GREAT SUCCESS

BEACONSFIELD COMMUNITY WORKS TOGETHER.

A LETTER FROM THE PUBLIC TRANSPORT CORPORATION

Re: STATION BEAUTIFICATION PROGRAM AT BEACONSFIELD

I would like to take this opportunity to thank the Beaconsfield Progress Association for the Community Service recently carried out in the cleaning-up and beautification of Beaconsfield Railway Station. Beaconsfield now has a station to be proud of.

While the Public Transport Corporation (PTC) is committed to provide a clean, safe and reliable transport system, community support such as the work done by your group is vital.

The public transport system and in particular the stations, are an integral part of any community. The PTC is keen to improve our public transport system and our customers and the general community are encouraged to help with any ideas for a better station environment. Again, congratulations on your effort.

Yours faithfully,

JOHN McLEAN
A/DIRECTOR, RESOURCE MANAGEMENT

HOT DRINKS WERE PROVIDED FOR TRAIN TRAVELLERS

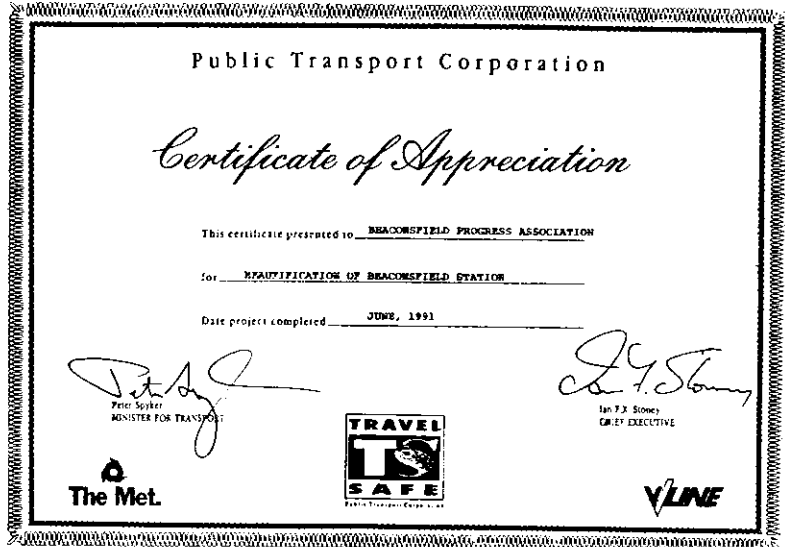
Thanks go to Dianne, the community spirited station attendant for providing hot tea and coffee for train travellers early one morning. Dianne provided for these out of her own pocket.

Have you seen the Posters that the Public Transport Corporation have put up? The station is looking good.

Thanks Dianne!



Dianne the station attendant gives a helping hand



Certificate presented to the Beaconsfield Progress Association by the Public Transport Corporation.

COMMUNITY WORKS TOGETHER

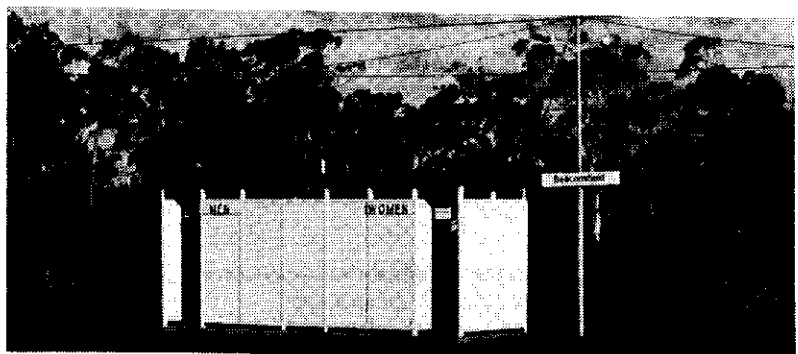
It was just wonderful to see the community working together at our recent "Station Paint-in". Mothers with their young children, brushes in hands worked along side more senior members of the community with one purpose - to rid us of the beast graffiti. The morning tea supplied by one of our members whose husband was a real stayer and excellent frame painter was most welcome. People met friends and acquaintances they had not seen for some time, and met others who were new faces. Teenage girls are fearless up ladders we found, no height too high, only outdone by a "sparky" who painted the high peaks.

The sausages and onions really hit the spot expertly cooked by the young teenage boys from the Scouts.

I'm sure those who participated enjoyed the companionship and team spirit that was part of the day.

A special thanks to Dianne the station attendant and the two Vicrail painters all of whom were so friendly and helpful.

Well done gang! It goes to show that if the community work together they can accomplish anything!



The Toilet Block after the Paint-in



**SERVICE &
REPAIRS TO ALL
CARS AND
COMMERCIAL
VEHICLES**

**BEACONSFIELD
AUTOMOTIVE
SERVICES**

Michael Perks

Qualified Motor Mechanic

PHONE: 707 4468

**Factory 1/94 Princes Highway,
BEACONSFIELD, 3807**

**BEACONSFIELD
LODGE MOTEL**

PHONE 7071454

1 Souter Street, Beaconsfield

Modern units in a quiet garden setting.

Facilities include colour TV, phone in all rooms, fridge, ensuit bathrooms, electric blankets, heaters, fans, clock, radio, tea and coffee making facilities. Restaurant and playground opposite motel. Shops and hotel within 500 meters.

*** * * RACV RATING**

PRIMARY SCHOOL NEWS

Safety House Project

The school is currently undertaking to arrange a Safety House Project for children in the area. If you don't have children at the local school but would be interested in helping with this project, please contact the school for more information.

Garden State Awards

The school has entered the "Garden State Awards" and each Wednesday afternoon the children together with parents, grandparents, aunts, uncles and friends will be planting and beautifying the school grounds as part of the environmental science program.

WANTED FOR SCHOOL GARDEN

Bricks/Pavers/Concrete Slabs suitable for 5.10cm x 3 metre paths for children to walk on between garden beds.

Please contact Mrs Meek on 707 1510.

Family Portraits

On the weekend of 7th and 8th September the school will be having photographers Olan Mills taking family portraits.

A FRAMED portrait of your family (253mm x 330mm - 10" x 13") for only \$10.00. Forms available from the school and must be returned by Friday, 24th August.

WASTE MINIMIZATION CENTRE

Beaconsfield has a long history of recycling and caring for the environment. The Scout Group have for many years been involved in paper and bottle collecting and the local school has also more recently initiated the recycling of aluminium cans and paper.

You will have read in the Banner that the school was recently fortunate to have received a \$2,000 grant from the Victorian Environmental Education

Council which has afforded it the opportunity to amalgamate all of these efforts. It is now, for your convenience, in the process of establishing a Waste Minimization Centre in one small corner of the school.

You will have noticed that the school ground in the last few years has undergone considerable tree planting and general beautification. This has all been part of an overall process in educating our children to care for their environment. The next step in our program is to show the children the many and varied aspects of recycling.

To ensure that this project does not encroach on the general appearance of our neighbourhood and school, it is our intention to erect a fence surrounding the Centre to ensure that all recyclable materials are contained within the small area which has been designated. The planting of trees and creepers and gardens and a regular patrol and clean up roster will all be a major part of our project.

There will be designated areas and containers for the different materials being collected. We hope that the whole community will get behind this project and show our children that everyone has a role to play in caring for the environment.

An ongoing joint Committee of the Scout Group and the School Community will constantly monitor and evaluate the progress of our program.

You can contact either

- Joe McMaster on 707 5940
- Kaye Johnston 707 3341
- Candy Blundy 707 3899
- Bernie Miles 707 2946

for further information on the Waste Minimization Centre.

**STATE SCHOOLS
ARE GREAT
SCHOOLS**

BEACONSFIELD TIMBER AND HARDWARE Pty Ltd

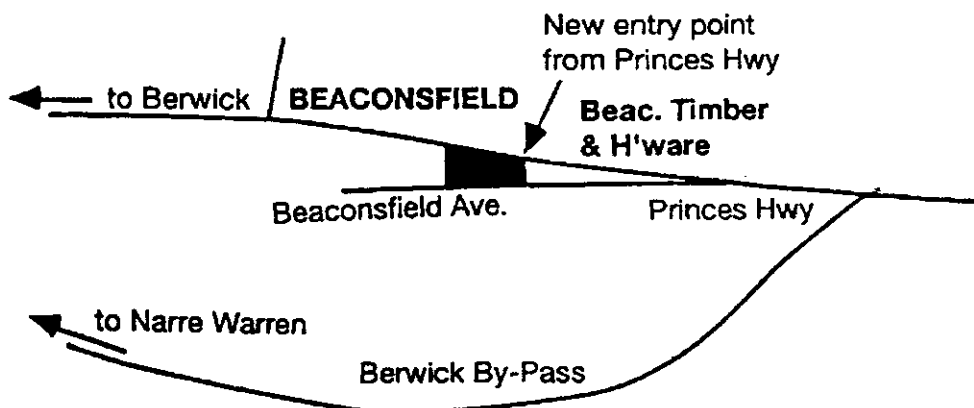
For all your
timber &
hardware
needs at
your home



Lot 2 BEACONSFIELD AVE, BEACONSFIELD

707 5055 (5 LINES)

OBHW, PINE, OREGON, K.D MOULDINGS
A/C SHEET, REDGUM, FENCING MATERIAL
FIBREGLASS SHEETING, TREATED PINE
FLOORING, HARDI PLANK



WE CAN ALSO
PROVIDE A
LARGE RANGE
OF HARDWARE
FOR THE
HANDYMAN
AND
PROFESSIONAL

Note our new entrance off the Princes Hwy

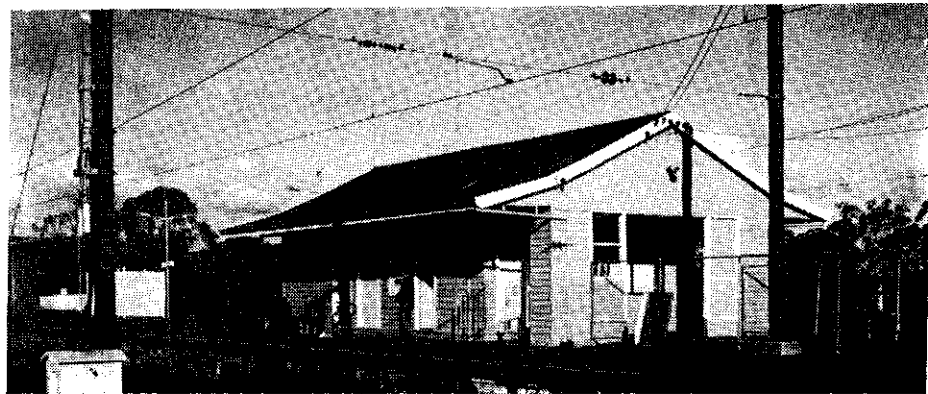
STATION PAINT-IN

Cont. from page 11



(Above) Beaconsfield Railway Station with the "Stop Tar" applied.

(Below) Beaconsfield Railway Station the next day.



WILLPOWER

Mary's husband was a very busy man. He went to work every day and worked long hours. He did not have time to do his garden.

One day Mary said to him, "Don't worry darling, I will do the garden". She went outside to look at the garden and said, "Oh my dear God the job is too big. I can not finish it. She went in the house and watched T.V.

The next day she came out again, looked at the garden and said, "Oh my God the job is much too big. I can not finish it." She went inside to watch T.V.

Her husband wanted to know what was going on. He went and hid himself behind the bush.

Mary came out again, looked at the garden and said, "My dear God the job is much too big. I will never finish it." Her husband hiding behind the bush said to her. "Oh my dear Mary, a little bit today, a little bit tomorrow, the faster you go, the faster you will finish."

"Angel has spoken to me", said Mary. She went to get her tools and started to work and finished it in no time and then she said. "My darling Angel, it was not too bad after all."

Michele Mauko.

RAILWAY STATION KIOSK

Whilst munching on sizzling sausages supplied by our local scout group at the recent successful painting of our Beaconsfield railway station, the thought occurred to some of us that the setting up of a food and beverage kiosk at the station could be a very worthwhile local venture. Now we are taking the idea further.

Our suggestion is that the kiosk be open on school week days between the hours of 6.00 a.m. and 10.00 a.m. and in the afternoons between 3.00 p.m. and 6.00 p.m. Simple foods such as pies, sandwiches, sweets, buckets of chips, dim sims, tea, coffee and cold drinks could be supplied. Profits from our community project would be paid to a fund set up by our Progress Association specifically towards the provision of our own community hall.

Apart from this necessary profit motive, there are other advantages in such a venture. It would be a useful service to many of our railway travelling public. Incidentally, approximately forty cars are regularly parked at the station and more than one hundred secondary students travel daily. Community pride would be fostered as we work together on our own scheme. The unsightly graffiti would surely be less likely to reappear if our station were manned for many hours of the day.

Our enquiries thus far have shown that the railway authorities would be most enthusiastic in helping us to establish our kiosk. They would help in fitting out the small room behind the waiting room so that a servery, power points, running water and shelving would be supplied. The area could be made quite

attractive. The M.E.T. require however, that we put a definite proposal to them, showing that our kiosk would be open on a regular basis and that it would not be an amateur and haphazard effort.

Now we need to ascertain whether we can find enough committed people to work regularly on this project. Retired people and folk who have a spare few hours each day or week might enjoy this challenge.

If you are available and willing to work in an honorary capacity at our proposed kiosk on week days at any of the times previously mentioned, for one, two or three hour shifts, please ring

Helen or Jeff on 707 3305.

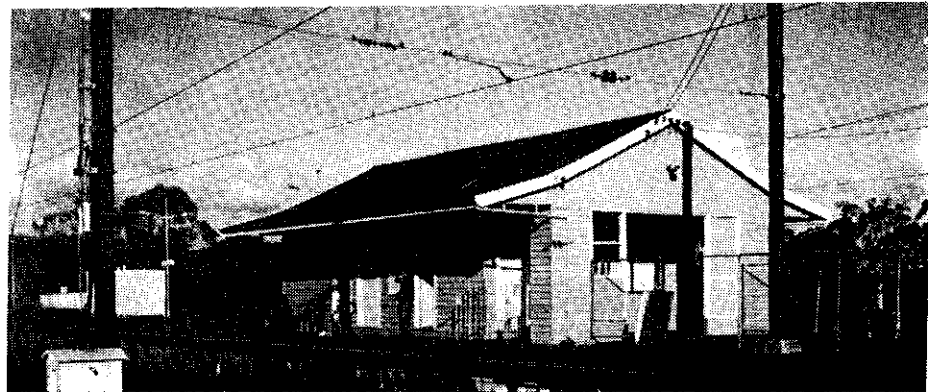
STATION PAINT-IN

Cont. from page 11



(Above) Beaconsfield Railway Station with the "Stop Tar" applied.

(Below) Beaconsfield Railway Station the next day.



WILLPOWER

Mary's husband was a very busy man. He went to work every day and worked long hours. He did not have time to do his garden.

One day Mary said to him, "Don't worry darling, I will do the garden". She went outside to look at the garden and said, "Oh my dear God the job is too big. I can not finish it. She went in the house and watched T.V.

The next day she came out again, looked at the garden and said, "Oh my God the job is much too big. I can not finish it." She went inside to watch T.V.

Her husband wanted to know what was going on. He went and hid himself behind the bush.

Mary came out again, looked at the garden and said, "My dear God the job is much too big. I will never finish it." Her husband hiding behind the bush said to her. "Oh my dear Mary, a little bit today, a little bit tomorrow, the faster you go, the faster you will finish."

"Angel has spoken to me", said Mary. She went to get her tools and started to work and finished it in no time and then she said. "My darling Angel, it was not too bad after all."

Michele Mauko.

RAILWAY STATION KIOSK

Whilst munching on sizzling sausages supplied by our local scout group at the recent successful painting of our Beaconsfield railway station, the thought occurred to some of us that the setting up of a food and beverage kiosk at the station could be a very worthwhile local venture. Now we are taking the idea further.

Our suggestion is that the kiosk be open on school week days between the hours of 6.00 a.m. and 10.00 a.m. and in the afternoons between 3.00 p.m. and 6.00 p.m. Simple foods such as pies, sandwiches, sweets, buckets of chips, dim sims, tea, coffee and cold drinks could be supplied. Profits from our community project would be paid to a fund set up by our Progress Association specifically towards the provision of our own community hall.

Apart from this necessary profit motive, there are other advantages in such a venture. It would be a useful service to many of our railway travelling public. Incidentally, approximately forty cars are regularly parked at the station and more than one hundred secondary students travel daily. Community pride would be fostered as we work together on our own scheme. The unsightly graffiti would surely be less likely to reappear if our station were manned for many hours of the day.

Our enquiries thus far have shown that the railway authorities would be most enthusiastic in helping us to establish our kiosk. They would help in fitting out the small room behind the waiting room so that a servery, power points, running water and shelving would be supplied. The area could be made quite

attractive. The M.E.T. require however, that we put a definite proposal to them, showing that our kiosk would be open on a regular basis and that it would not be an amateur and haphazard effort.

Now we need to ascertain whether we can find enough committed people to work regularly on this project. Retired people and folk who have a spare few hours each day or week might enjoy this challenge.

If you are available and willing to work in an honorary capacity at our proposed kiosk on week days at any of the times previously mentioned, for one, two or three hour shifts, please ring

Helen or Jeff on 707 3305.

BEACY'S NOTICE BOARD

A VARIETY OF MUSIC FOR ALL OCCASIONS

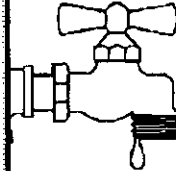


THE DISCO CONNECTION

- * Weddings
- * 21st Birthdays
- * Engagements
- * Club Functions

Contact
Trevor on
796 1181

PLUMBER



Noel Tonks

707 5182

General Plumbing
Gas supply and installation
Sewerage and Maintenance

Reg. 15753



V.I.P. Home Services

GREG HANCOCK
OWNER / OPERATOR
PH: 614 4600 PAGER 36943
A/H: 796 6446

- LAWNMOWING
- EXPERT PRUNING
- TREE LOPPING
- GUTTER CLEANING
- FERTILISER SPREADING
- WINDOW CLEANING
- RUBBISH REMOVAL
- FREE SOIL TEST
- FULL INSURANCE COVER



V.I.P. Betta Green Fertilisers

PHONE (059) 43 2375

Rawson Motors

- * ALL MECHANICAL REPAIRS
- * STEAM CLEANING
- * SERVICE & TUNE UP SPECIALIST
- * LICENSED VEHICLE TESTER
- * CERTIFIED GAS CONVERSIONS

PRINCES HIGHWAY, OFFICER., VIC. 3809

TYREPOWER

RAY LAWN

Proprietor

UNDER NEW MANAGEMENT

BERWICK TYREPOWER

Enterprise Ave, Berwick, Vic. 3806
Tel (03) 707 3177 Fax: (03) 796 1836

CAROL GIBSON PHARMACY

Carol Gibson B Pharm M.P.S.

FREE DELIVERY SERVICE

53 Beaconsfield-Emerald Rd.,
Upper Beaconsfield, Vic., 3808 Telephone: (059) 44 3881

Highlight Design Drafting Pty Ltd

ACN 007 124 094

Residential & Commercial
Structural - Civil - Architectural

Richard Exley

Draftsman

P.O. Box 299, Pakenham, Victoria 3810
Phone: (059) 41 3855

ENTERPRISE

SCREENS
&
SECURITY DOORS

Hollands, Vertical Drapes, Venetians
Canvas Blinds

62 Enterprise Avenue
Berwick 3806

Phone 796 1088
A.H. 796 1379

BEACONSFIELD GARDEN SUPPLIES

For friendly, efficient service

Come & See Our Craft Shop - GIFTS with a Difference

- * Sand, Screenings and Cement
- * Pavers and Terra Cotta Agi Pipes
- * Redgum Chips and Pine Bark
- * Sleepers (old and new)
- * Scoria and Rocks
- * Handyman Hardware

WE CATER FOR ALL BUILDERS, LANDSCAPERS AND TRADESMEN
-Deliveries 7 days a week-

"Call in and say Hello"

94 - 100 Princes Highway, Beaconsfield
Telephone (03) 707 5144



First National

Hudson First National Berwick

Selling or Leasing Your Property
Residential -- Rural -- Commerical
Estimate of Sale Price
or
Sworn Valuation
For Mortgage or other Purposes

Contact Geoff Hudson
G. H. Hudson Pty. Ltd.

The District's Oldest Established Agent

Established 1950
Phone 707 1944
57 High St, Berwick

First National is Real Estate

PLAYGROUP

Cont. from Page 5.

Cost - \$7 Insurance cover (V.P.A. Annual Fee)
\$1 per session per family

PLAYTIME

For 3 & 4 Year Olds.

Playtime is becoming more and more popular with the families of three and four year old children.

As we are getting closer and closer to the end of the year and for some children almost time to go to Pre-school, more parents are sending their child to "Playtime" as a preparation for Pre-school. The children are able to experience some Pre-school activities for two hours a week under the supervision and guidance of an experienced child care worker.

Parents also have a chance to have a little breather each week while their active three year olds are enjoying themselves at Playtime.

Are your 3 or 4 year old looking for a little extra educational fun and social stimulation? Then perhaps you'd like to contact Kathy on 707 1284 for more details.

Placements for Tuesday afternoon sessions in Terms 3 & 4 are still available. Enrolments for 1992 are also being accepted now.

MARKET PLACE

FOR SALE

Toyota Landcruiser, 1974 SWB, VGC, 123,000k, Reg and RWC, FWH, towbar and radio cassette. Nothing to spend \$7500 ONO.
Phone BH 707 2302

FREE TO GOOD HOME

Two female, good natured, speyed cats, both 3 years old one black one tabby.
Phone BH 7072302

TOWEL PARTY IN AID OF DANDENONG VALLEY SCHOOL

Dandenong Valley School is a special education centre at Fountain Gate for handicapped children.

A Towel party will be held at the School in Victoria Rd. Fountain Gate. On Wed 23rd Oct. from 10.30 am. onwards.
Lucky door prize.
Morning Tea provided by the students.

Towels Bath Towels Beach Towels etc.

High Quality Seconds at reasonable prices.

For more info. Contact Dulcie on 707 1765 or the School on 704 9411

Answer to Brain Teaser page 4
The young men were two of triplets.

CLOSING DATE FOR THE NEXT BANNER IS 1st OCTOBER 1991.

Like to advertise in Beacy's own paper "THE BANNER"

Fill in the form and leave it at the Post Office.

Name of Advertiser.....

Phone Number.....

Address to which account is to be sent.....

Message.....

Rates for advertising:

1/4 page in a single issue \$25.

1/4 page \$20 per issue for six bi-monthly issues.

1/2 page in a single issue \$48.

1/2 page \$38 per issue for six bi-monthly issues.

Full page in a single issue \$80.

Full page \$64 per issue for six bi-monthly issues.

Beacy's Notice Board \$10 per issue

Market Place \$1 per line per issue.