

# Beaconsfield Banner

Vol. 11 No. 3 Bimonthly Publication of the Beaconsfield Progress Association Inc. June/July 1999

ARTICLES FOR THE BANNER TO GO TO GLORRAINE HARDY 9796 1361, MARGARET BOON 9707 5053 OR BOX IN POST OFFICE  
ADVERTISING CO-ORDINATOR WILLEM BOON 9707 5053 BANNER POSTAL ADDRESS PO. BOX 217 BEACONSFIELD 3807  
EMAIL ADDRESS FOR THE BANNER IS bpabanner@aol.com

## PROPOSED SALE OF HALL SITE

The Cardinia Council was again talking about selling off our old Hall site near the hotel, and naturally residents were getting quite upset, so this matter was discussed at the May 18th Public meeting. Cr. Graeme Kidd addressed the meeting and told the residents present that he had moved a motion at the previous nights council meeting to have the matter deferred.

The motion reads:-

**"THAT THE SALE OF THE COUNCIL PROPERTY, OLD PRINCES HIGHWAY, BEACONSFIELD BE DEFERRED UNTIL A PROGRAM FOR THE DEVELOPMENT OF COMMUNITY FACILITIES AT O'NEILL ROAD, BEACONSFIELD IS ENDORSED BY COUNCIL"**

The motion was moved by Cr. Kidd and Seconded by Cr. Legge.

Mrs. Jenny Kerr who was very active with a steering committee for a new Hall on the existing site in the early 1990's stated

that, after discussions with Cr. Kidd that the new proposal for a Community Centre at the corner of O'Neill Road would be very good for the community.

There was a general acceptance that we should wait and see what the Council offered us, when it would materialize, if it would suit our need, what transport would be available etc. Cr. Kidd assured us that we would be able to have community participation in the planning and design.

There were reservations expressed by a number of residents as to the suitability of the site, and their desire to have a facility close to the existing shops and as the existing site appears to be big enough for a decent sized hall, they will need a lot of convincing to support what they see as an out of town facility. Residents were confused over the size of the existing site having been led to believe that it was only half an

acre and to find it is actually 8771 square meters which is a little over 2 acres made them even less likely to support its sale.

It has been suggested that if the community is satisfied with the Council plans for the O'Neill Road site then it is in the communities best interest to sell the original site at a time when it will realize a much higher price. It has been suggested that when the Berwick Views Estate is complete and the population of Beaconsfield has more than doubled a site in the commercial heart of Beaconsfield will realize a much better price. This has been conveyed to Council officers and was well received.

### BEACONSFIELD PROGRESS ASSOCIATION INC. PUBLIC MEETING

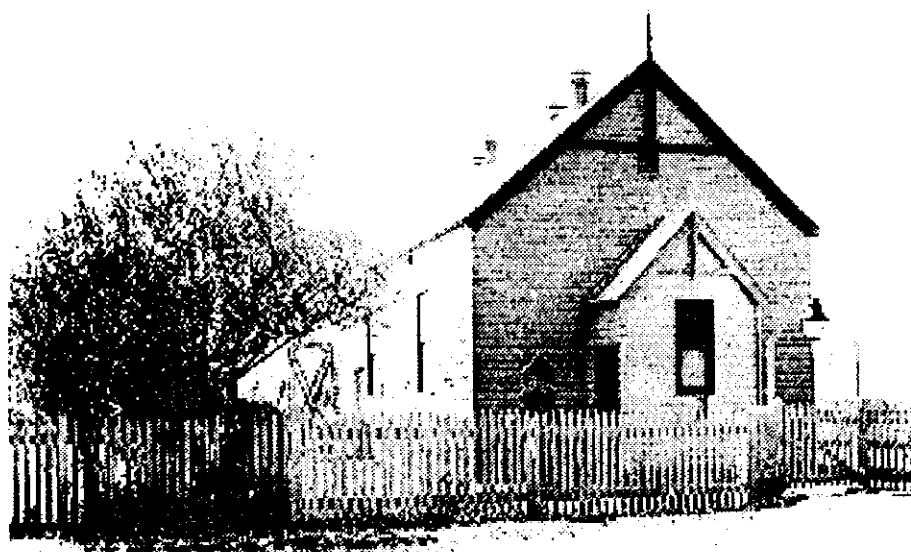
Tuesday, 29th June, 7.30pm  
Beaconsfield Community Centre  
Beaconsfield Avenue, Beaconsfield.

#### ITEMS FOR DISCUSSION

- (1) Berwick Views. What will be the end result of all that digging.
- (2) Our Public Hall? What is the latest information. What happens next.
- (3) Name of our main road through town. Have you had problems with emergency services finding your house? Again it was a problem on the week end and vital time was lost sorting out where the ambulance was supposed to be. Lives could be lost. This problem has to be sorted out.

Residents comments, problems and concerns.

Come along and voice your concerns. If we don't know about them we can't help you. Supper will be served and there will be a chance to speak to the committee.



*The Beaconsfield Public Hall where many social functions were held over the years. Since it was removed in 1970 for the duplication of the Highway Beaconsfield has been promised a Public Hall but we are still waiting after nearly thirty years.*

For all outdoor  
needs from tractors,  
mowers, chainsaws,  
brushcutters,  
pumps, etc.



Spares, Repairs & Service

Contact Peter Willis

## Beaconsfield Mower & Tractor Centre

114 - 120 Old Princes Hwy.  
Beaconsfield.

9707 5368



## BEACONSFIELD AUTO ELECTRICS



3/94 Princes Hwy Beaconsfield

Telephone: 9796 1550

MOBILE 018 353 950 FAX 9796 1144

- \* Change Over Starter Motors & Alternators
- \* Ultrasonic Injection Cleaning
- \* E.F.I. Tuning & Repairs ★ Batteries
- \* Air Conditioning Service & Instalation
- \* Headlight Alignments ★ Tune - Ups
- \* Onsite Service Calls ★ Full Re-wiring

Also at:  
29 Enterprise Ave.  
Berwick Ph: 9707 3617



## HORSE TRAILS

Horse trails were discussed at a public meeting on 18th May, 1999. Whilst it was intended to discuss horse trails generally the meeting was particularly interested in the Cardinia Creek Reserve. People representing horse riders, pony clubs and parents with children who rode horses were most concerned about the danger of riding a horse along Emerald Road and the access to Akoonah Park. Apparently the Council has given permission for the use of a track to gain access to Akoonah Park from Beaconsfield-Emerald Road on a 12 month trial. Riders were concerned as to who was going to monitor this trial and who would decide the outcome of the trial period.

Lisa, representing the Friends of Cardinia Creek Reserve outlined the conservation groups fears if horses were allowed to use the park. The groups main concern appeared to be the grass seed that the horses would bring into the reserve, and the damage that would be done to native grasses if imported grasses were allowed to take over. There was also concern that if horses were

allowed into the park they would stray from the paths and damage the ground and small plants such as orchids with their hooves and also break branches etc. off to make paths.

The groups representing horses did not believe that horses caused as much damage as was being suggested and that horse droppings were not significant away from the horses stables. They also pointed out that many grass seeds would come to the park with other animals and birds, and airborne seeds would probably be their biggest problem. It was also mentioned that people were known to dump garden waste and lawn cuttings in the park believing them to be harmless mulch.

After hearing both sides of the argument the general consensus from the meeting was that the community did not want to see horses banned from the Park, but felt that horses should be restricted to properly constructed pathways, and that such pathways would benefit the whole community including walkers.

## CONTENTS

Proposed Sale of Hall Site	1	Maria Evanson	11
Public Meeting	1	10th Anniversary of Banner	12
Horse Trails	5	Anzac Day	14
Presidents Report	3	Reflections 5 Years Old	13
Smoke Detectors	3	History of Beaconsfield	13
Beac. Community Centre	4	Long Time Residents Move	14
Scouting About	4	Brickbats & Bouquets	16
Beaconsfield Prim School	5	Tax Time Again	17
Traffic	6	Gardening	18
Thankyou from the Selvo's	6	Notice Board	19
Make and Mingle	7	Video Vibes	21
Jasons Country House	8	Winter Cometh!	21
Community Information	8	Hot Money	21
Our Natural World	9	Play it Safe	21
Beaconsfield's Handyman	10	Sports	22
Letter to the Editor	11	Beaconsfields Rainfall	22
Free Pet Registration	11	For Sale & Notices	23

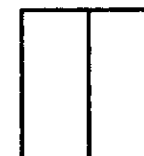
## FACTORY DIRECT Security Doors



ALSO  
AVAILABLE  
\* tuff mesh  
\* one way  
vision mesh

## Wardrobe Doors

Vinyl &  
Mirror  
Sliding  
Doors



## Shower Screens



\* Sliding Door  
\* Pivot Door  
\* Repairs &  
Reglaze

## Pool & Garden Fencing



\* Many designs  
\* Full colour range  
\* Meet Aust. Standards  
1926 & 2820

## Vertical Blinds Holland Blinds Slimline Blinds



## PAKENHAM DOORS & SCREENS

SHOWROOM/FACTORY  
2-1 Purton Rd, Pakenham  
Phone: 5940 2225  
Mob: 0418 398 319

## PRESIDENT'S REPORT

From the President of the B.P.A. Joy Bishop



The Committee have been busy with many issues affecting the town, and hopefully voicing the opinion of the majority of the residents. Don't forget that if we don't know what you want we can't represent you. Always make your feelings known on an issue to me or one of the committee, better still come along to the bi-monthly public meeting and have your say.

The next public meeting will be Tuesday 29th June, 1999 7.30p.m. at the Community Centre. Issues for that meeting will be our on-going items - Roads, Hall/Hall Site and the name of our main road, currently Old Princes Highway and the confusion this is causing. Recently an accident was reported as being 1Km from the intersection of Beaconsfield Road and Emerald Road, unfortunately it was taken to be the Old Princes Highway (still appearing on some maps as Beaconsfield-Berwick Road) and so emergency workers were looking for a road accident 1Km along Emerald Road. In actual fact it was 1Km South of Emerald on the Beaconsfield Road. I understand the Emerald tow truck was the first to locate the accident and direct the ambulance, I believe that someone was so

badly injured that the air ambulance was called. Oh! what confusion, and all because of the change of name of the Princes Highway. We will also have an open forum for you to bring up any issue that you think needs our attention.

Our last meeting covered horse trails, particularly in the Cardinia Creek Reserve, and the possibility of the sale of our Hall site, between the hotel and the Doctors surgery. (See the separate reports on these items).

We are currently working on the Annual Bonfire Night event and the committee would welcome any suggestions or offers of help from the general community.

We are hoping to have good news for you very soon on the improvements to the landscaping in the Median strip from Goff Street to the Eastern end of town, and our request to Council for our Public Toilet Block.

Unfortunately a charity bin has reappeared at the Railway Station and as this has been placed on private property we have been unable to have it removed, although the Railways have agreed to monitor the situation for garbage and mess left around the area. We would still urge you to donate any unwanted goods to local charities as these tend to benefit our local area. Among local groups are the op-shop in Berwick and we believe the Salvation Army are starting a new depot in Pakenham.

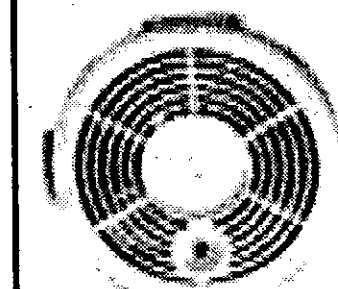
The City of Casey is having trouble deciding where

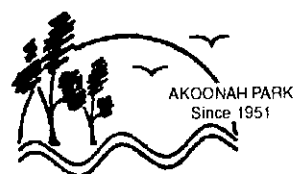
Beaconsfield is! There is a new sign in Soldiers Road, but it certainly isn't on the border, efforts are being made to get it correctly placed.

I would like to take this opportunity on behalf of the Beaconsfield Progress Association and the Beaconsfield Community to pass on to Cr Ted Owen our warmest thoughts for a quick recovery for his wife Gail who we understand has been dangerously ill but is now on the road to recovery, although we believe this is going to be a long haul.

## SMOKE DETECTORS

Everyone will know by now that it is compulsory for all buildings to be protected by smoke detectors. Just a timely reminder that just because it is winter doesn't mean there aren't any fires. Please ensure that there is a smoke detector installed in your home or place of employment and that you regularly check the battery and once a year [preferably when daylight saving commences] replace the battery.





**Akoonah  
Park  
BERWICK**

**Produce, Trash &  
Variety Market**

**EVERY SUNDAY**

Opens 8.30am. to 1.30pm.

*Family Market*  
*Free entry*

Phone Bookings on  
**9796 1455**

**Keogh's Pharmacy**  
OPEN 7 DAYS A WEEK

Mon. - Fri. 9am. - 9pm.  
Sat, Sun. 9am. - 6pm.  
Public Hol. 9am. - 2pm.

Public Fax Service 9796 1645

for  
**HOME DELIVERY**

**9707 5187**

Agent for:  
MEDIBANK PRIVATE  
A.N.A.  
LATROBE  
YARDLEY COSMETICS  
CONSTANCE CARROL  
AUSTRALIS  
FRENCH PERFUMES

Invalid Equipment for Hire  
or Sale.  
Ear Piercing  
Pregnancy Testing  
Photocopy Facilities  
Fax Facilities

Agent for: KODAK  
24 exp film \$7.95

Reprints 1/2 Price for 10 or more  
1/2 price Enlargements : 20 x 25cm

Shop 2/16 - 24 Princes Highway  
**BEAconsfield**



**BEAconsfield  
COMMUNITY CENTRE**

P.O. Box 2 Beaconsfield 3807.  
Ph. 9707 3449

A fantastic birthday party was enjoyed by the Midway Club on Monday May 24th. Both the Community Centre and the Midway group are 7 years old.

Drop in to the centre to say hi. If there are any courses you would like to see offered, fill in our course survey. We would like to hear your ideas.

During Term 2, Calligraphy, Getting Started with Computers and Creative Cards have been well attended by those wanting to learn something new and have a bit of fun. Many have enjoyed the walk and talk in our free walking groups while they improved their fitness in a fun way. Line Dancing on Thursdays, is a friendly group where all ages are welcome.

All the activities for children offered in Term 2 will continue to be offered in Term 3. These include Occasional Care, Pre- Kinder, Playgroup, Music Time, Pre-

school Dance, Dance 5-7 years or Toy Library.

TERM 3 Look out for the Term 3 programme to be distributed from the end of June onwards.

Three of the new courses being offered in Term 3 include : - Ribbon Pansies Workshop - Tuesday, August 10th. - Community First Aid course. Learn CPR for child or infant, first aid priorities and other procedures to deal with health emergencies. Saturday, August 21st. - Meditation. The benefits include feeling less stressed and improved self esteem.

Full details of all activity groups and courses are in the programme. Our term programme is delivered to letterboxes in Beaconsfield or is available to pick up from the Beaconsfield Milkbar or Beaconsfield Post Office. You can ring for a brochure to be mailed to you.

For enquiries, contact Jeanette 9707 3449.



## SCOUTING ABOUT

Beaconsfield Scouts have been very active attending activities at Upper Beaconsfield and discussing plans to travel to Canberra. They have had Upper Beaconsfield Scouts attending their hall to join in cooking, planning camps and badge work activities. Leaders have also attended at the Primary School and all the pupils have had a great time getting a taste of the fun which scouting can provide. One of the things the kids asked was 'if we wanted to have a billy cart derby do we have to provide our own billy carts'. Not such a silly question. Our group has billy carts, tents,

sleeping bags etc. All that is required to join is a uniform which can be bought by the group and the parents can pay by instalments - usually about \$100. The fee for the year is \$100 which provides your child with 10 weeks x 4 terms of in-hall activities and when outings such as camps are arranged it usually only costs \$15 to \$25 for two nights and three days away. Compared to other social and sporting activities this is excellent. Leaders training is certified by the State Training Board. If you are interested please call 9707 1871 any time.



**BEAconsfield  
PRIMARY SCHOOL**

Cnr Lyle Ave. & Princes Hwy.  
P.O. Box 251. Beaconsfield. 3807

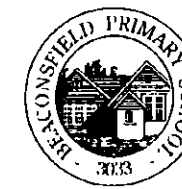
We provide  
a stimulating curriculum  
in pleasant surrounds for  
all children Prep-Year 6.

Parents and children are welcome  
to visit the school. Phone for an  
appointment to arrange a tour  
with the Principal, Di Lockwood.

**9707 1510**



*From a fine tradition to an exciting future.*



**BPS CORNER**

What's Happening at  
Beaconsfield Primary School.  
Maurice Potter School Council President.



Photo above : Michael Piper and Sylvia Oswald during a dress rehearsal of the school production of Ali Baba. The production will be held on Thursday 24th June, 1999.

To celebrate State Education, Beaconsfield Primary School presented a special Maths evening for local families including prospective students and their parents. It was a most enjoyable evening for staff and families - a great chance to find out about our great school.

## FOR THE HOMEMAKER

We have a huge range of timber to choose from & the hardware and tools you will need to make that addition or alteration to your home.

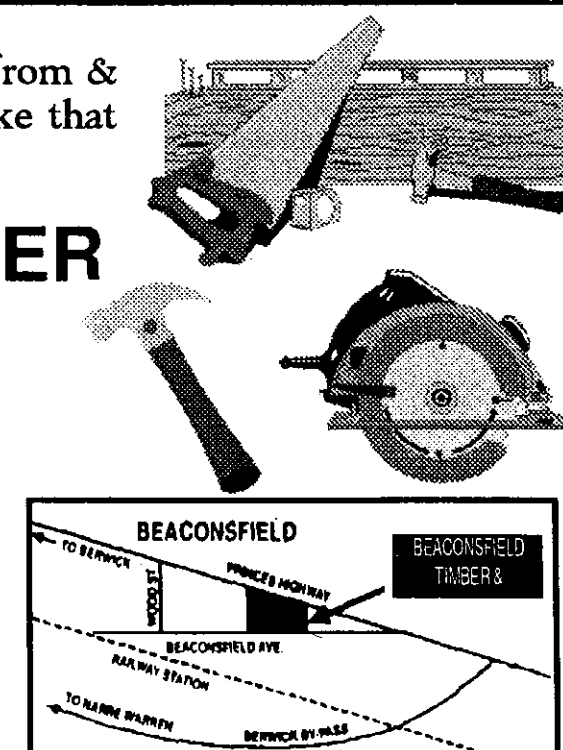
**BEAconsfield TIMBER  
& HARDWARE P/L**

**PHONE US TODAY!**

**Lot 2 BEAconsfield AVE. BEAconsfield**

Easy access from Highway or Beaconsfield Ave.

Phone 9707 5055 Fax 9707 3279



## GREAT DEALS

ON ALL YOUR HOME IMPROVEMENTS NEEDS



- ★ Redgum Sleepers
- ★ Western Red Cedar W'boards.
- ★ Baltic Pine W'boards.
- ★ Jarrah & Karri Flooring.
- ★ Canadian Oregon
- ★ Treated Pine Boards & Posts.
- ★ Large Range of External & Internal Doors.
- ★ Timber Decking (various species)

DELIVERIES TO ALL AREAS DAILY

So for Friendly & Efficient Service Call in and See the Boys at

**VAN STEENSEL TIMBERS PTY. LTD.**

LOT 1, PRINCES HIGHWAY, OFFICER 3809 or phone

**5943 2371**

Fax: (03) 5943 2284

## TRAFFIC

Traffic and Roads are an on going concern in the Community. The traffic management plan for Wood Street and Beaconsfield Avenue is still being undertaken but work is to be done with line marking at the intersection of Beaconsfield Ave. and Wood Street in the immediate future. Residents have been complaining about the lines under the viaduct and Council has been approached to have them repainted.

There has been a Police presence in the town with speed cameras in the vicinity of the Primary School in the past few weeks, we hope this will slow the traffic in the school precinct.

There is still traffic congestion in the town at school times particularly in the afternoons but there has been a noticeable improvement in the area around the Primary School as reported by local residents. It is a shame that the same cannot be said around St. Francis Xavier where we are told if anything the congestion is getting worse with more and more parents collecting children after school and causing Beaconsfield Avenue to be impassible for residents at school time. There are reports of long queues to get onto the Highway.

Residents have been asking why there is no congestion at Haileybury College and why can't St. Francis Xavier follow their example and require parents to enter the school grounds to deposit and pick-up children. This matter will be taken up with the Principal of St. Francis Xavier College.

The announcement of the Hallam By-Pass has made it even more important that we keep the pressure on the Government for the Pakenham By-pass to alleviate the problems which will be experienced at the intersection of the Princes Freeway/Old Princes Highway/May Road. This intersection is going to become more dangerous when you consider that when the Hallam By-pass is completed and City Link is opened this will be the first intersection with turning traffic (for example from just out of Geelong and from Tullamarine Airport). It just doesn't bear thinking about, we must make the Pakenham By-pass and this intersection our highest priorities.

We have also noticed that Berwick groups are attempting to make a very big noise for road funds so we must make sure that we keep our State Members of Parliament informed as to our needs so that we do not get forgotten.

### THANK YOU FROM THE SALVO'S

The 1999 Salvation Army Red Shield Appeal held on the weekend of 29/30th May was well supported by the township of Beaconsfield.

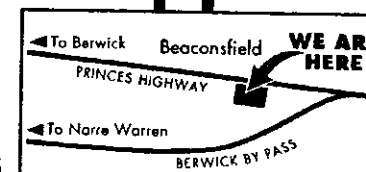
People generously gave a total of \$804.

A special thank you to the volunteers who braved the elements of a wintry weekend to collect for the Salvation Army.

## Beaconsfield Garden Supplies

Specialising in:

LANDSCAPING and GARDEN SUPPLIES



- ◆ Sand
- ◆ Soil
- ◆ Redgum Chips
- ◆ Garden Mix
- ◆ Red Gum Fire Wood
- ◆ Pine Bark
- ◆ Scoria
- ◆ Mushroom Mulch
- ◆ Crushed Rock

SLEEPERS - Old and New

**OPEN 7 DAYS A WEEK  
- WE DELIVER -**

100 Princes Hwy. Beaconsfield

**Ph. 9707 5144**

Special for locals  
Present this  
voucher and get

**Red Gum Firewood  
3m<sup>3</sup> ONLY \$220**



## DISCO IN THE BISTRO

WITH DJ PETER COMBES  
PLAYING THE HITS OF THE 70'S / 80'S

**NO COVER CHARGE  
9pm. START  
EVERY SATURDAY NIGHT**

SUPER PUB EVERY FRIDAY NIGHT TO SHARE IN THOUSANDS OF DOLLARS IN CASH ASK ABOUT SUPER PUB CARD

For great food and friendly service, join us at  
**"THE CENTRAL"**

THE CENTRAL HOTEL : 1 PRINCES HWY. BEACONSFIELD 3807  
PH : 9707 1511 FAX : 9796 2578

## MAKE AND MINGLE

By Ann Taylor



Ann Taylor

used on windows or jars or used to decorate glass chopping boards. There will also be a painting group.

Joy's bead necklaces are very easy and look great and can match any outfit. During term three we will have a special stamping day so you can make your own individual greeting cards.

During term two, we made some beautiful crafts. Ribbon pansies have been used on cushions, cards and framed pictures. We then learned ribbon roses and also ribbon fuchsias. These flowers look so beautiful and have a number of applications. We plan to continue with these ribbon flowers in Term Three, so you can still join in, if you would like to learn.

We have some new ceramics for painting and one step decoupage and some new designs for tassel ladies. If you have never tried these crafts you can start during winter.

You are welcome to bring your own craft to work on or just come for a chat, a cuppa and to make new friends

Patchwork is becoming popular again and you can learn basic piecing with Cheryl or Crazy Patchwork with Kath. The cushions are really looking beautiful and each one is different.

We meet every Wednesday 10 am to 12 noon during school term at Beaconsfield Baptist Church Corner Souter Street and Old Princes Hwy Beaconsfield and we'd love to meet you.

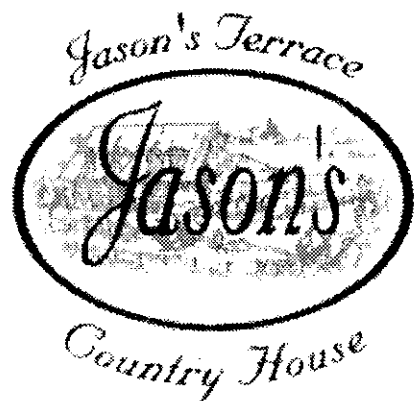
Glassart techniques can be Enquires Ann 9707 1996



Photo:- Kath Clarke and Joyce Duffy enjoying making ribbon flowers.

## JASON'S TERRACE

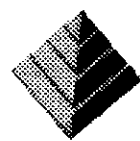
International Cuisine - Fully Licensed



### HOURS:

Dinner Tuesday-Sunday  
Lunch Wednesday -Friday

**For reservations Phone 9707 5900**  
**29-33 Wood Street, Beaconsfield**



GARDEN  
CENTRE

**THE BERWICK  
GREENERY PTY LTD**  
*Where Great Gardens Begin*

Bare rooted Rose, Fruit trees,  
Ornamentals and Weeping trees  
now in stock.

We have the best range, the best  
quality, the best advice, and  
attractive prices.

**THE BERWICK GREENERY PTY LTD**  
CNR. CLYDE RD. & RESERVE ST.  
BERWICK VIC. 3806  
**PH. 9707 2455**

## JASON'S COUNTRY HOUSE

In the hospitality industry word travels fast. We've all heard about the fine dining, excellent food and service at 'Jason's Terrace'. Jason has now taken possession of a lovely new Country House in Cardinia where he is branching out into his very own wine appreciation classes and cooking school.

Jason's sixty square Country House is set in a very rural peaceful location, perfect for a quiet escape, team building or group get togethers. The Country House is set on sixty-five acres of land with three stories of luxury accommodation. The rooms are equipped with king size, four poster beds, luxurious linen, exposed beams and a fantastic view of the countryside.

The fifty seater restaurant is an ideal setting for a cooking school and wine appreciation classes. Come for the day or stay a night or two and relax in luxury accommodation with excellent service and warm hospitality.

Settle down for the evening listening to the relaxing sounds of the Grand Piano with your favourite nightcap.

School classes start May 17th with no more than eight people to a class. Classes are filling up fast so be sure to give Jason a call on 9707 5900 to make a booking or to find out any further information about future events at Jason's wine appreciation classes and cooking school.

*This a paid advertisement*

## COMMUNITY INFORMATION CARDINIA INC

Remember us, we used to be your Citizens Advice Bureau. Now we're not a "shifty" lot but we are on the move again and as from the 15th June you can find us at our new location 65 Henry Street, Pakenham. We are open between the hours 10am to 3pm Monday to Friday.

Sharing the Centre with us will be Copelen Family Counselling Services, Financial Counsellor Sue Carrol, the Welfare Officer for Cardinia Shire also Legal Services. You will need appointments for these agencies but not for Community Information Cardinia.

Now there are times when we don't know where to turn for help when we have a problem with a Service or Business, well we have just received a great little booklet titled "Where to Complain" which covers Advertising to

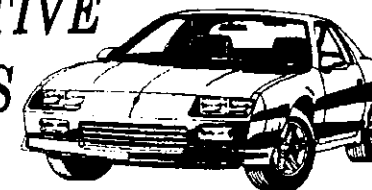
Workcover giving information on where to get help. If you are battling on your own to get satisfaction from a Service or Business then the answer may be in this booklet.

Wondering where your money goes! Why not call in and pick up a budget sheet, then if that doesn't help let Sue Carroll, the Financial Counsellor, go through it with you and work out a system to suit your financial situation and get in front of those bills that always seem to mount up.

There's no end to the services available through Community Information Cardinia. Now remember, we will be at 65 Henry Street, Pakenham from the 15th June. Hours of opening 10am to 3pm Monday to Friday.

Phone 5941 2377  
Fax. 5940 1514

## BEACONSFIELD AUTOMOTIVE SERVICES



**Rob Robinson**

Qualified Motor Mechanic  
Licenced R.W.C. Vehicle Tester  
& Repairer

Factory No. 1  
94 Princes Hwy.  
BEACONSFIELD



Lic Vic Roads  
Vehicle Tester

**PHONE: 9707 4468**

## Beaconsfield Lodge Motel

Stay in one of our new or  
completely refurbished  
and renovated units



Our 12 units feature double, twin or  
queen size beds and a two brm family unit.

Your Hosts: Robin & Kathleen Best

**Budget  
Motel  
Chain**

1 Souter St.  
Beaconsfield  
**9707 1454**

## OUR NATURAL WORLD

*(Written by Peter Hansen)*



Peter Hansen

For those people who have been to a natural health practitioner you may have been surprised and a little fascinated when the practitioner looked into your eyes and told you things about your health that have impressed you as to their accuracy.

This form of diagnosis known as "Iridology" and is extensively used by people practising alternative therapies.

What is "Iridology" and what are its origins and history? "Iridology" is a science based on the analysis of the complicated structure of the iris.

This is the part surrounded by the "whites" of the eyes and does not include the pupil, that "black hole" in the very centre of the eye structure.

The various "markings" of the iris and the colours therein, give a detailed picture of the body organs and systems, reflecting the integrity of the body. It does not "name" diseases so to speak, but deductions can be made from interpreting the signs, and is a valuable aid to diagnosis.

The first efforts to "read" the eyes go back to the ancient Chaldeans but the first reference to "iridology" in more modern times is credited to the physician Philippus Meyens, who referred to it in a published book in 1670 in Dresden Germany.

However, the true originator of Iridology as known in more

recent times was a Dr. Ignatz Von Peezely (1826-1911) an Hungarian Physician. At the age of 11, Von Peezely was trying to free an owl trapped in his garden, when he accidentally broke one of its legs. He soon noticed the appearance of a dark stripe in the lower part of the bird's eye. He dressed the owl's wound and nursed it back to health, releasing it when well. However, the bird stayed on in his garden for several years and Von Peezely observed the appearance of white and crooked lines in that part of the eye where the black stripe had been located. He eventually became a doctor and used natural remedies in the treatment of his patients. Recalling the owl's eye and the injury the bird sustained, he increasingly noticed correlation's between markings on the iris and ailments of those who sought his help, and the fame of his unique art spread rapidly across the country. Patients thronged to him. Thus the birth of 'iridology' is said to have been about 1861.

Soon the authorities intervened in the person of another physician who accused Von Peezely of being a "quack". Von Peezely looked into the physician's eyes, and gave him a thorough and correct analysis of his health, past and present proving he was no "quack" and no more was said of the matter. He had a long and successful practice, publishing only one book on his discoveries in 1880. He died aged 85 in 1911.

### THOUGHT OF THE DAY.

"We don't catch diseases, we create them by breaking down the natural defences according to the way we eat, drink, think and live".

This article first appeared in the Banner in 1994.

## BEACONSFIELD'S HANDYMAN

By Phil Collins

What does a handyman do in his spare time? Does he have a hobby? Well this month has been quite busy, some painting, building shelves, 6 lecterns for the Family Court, installed an air conditioner, fixed a shower screen, fixed several doors all mixed up with hospital visits.

Enjoyed some wood turning recently; a good way to use up some timber scraps and produce some elegant shapes - quite useless of course until you

become skilled enough to make things that are good enough to be allowed inside the house.

We are making a tandem bicycle for the grandchild to fall off, it isn't suitable for the road but it will be fun to watch. Scooters are popular again - made one using motor mower wheels (a three wheeler) and another with golf buggy wheels. The place is almost overrun with unwanted bicycles and wheelless mowers.

We have also been sprucing up a Holden car and a Holden ute. The car had to be made roadworthy for sale, which it is but the ute is a major project involving a nephew who has very high expectations of an old utility.

High standards should be

encouraged, so the workshop is littered with doors and windows and wheels plus a coating of fine dust.

Next month I have some pine panelling to do before some bigish paint jobs. Phone the Handyman 9707 4225.



**1 RAILWAY AVENUE  
BEACONSFIELD 3807  
9796 1022**



**Phil Collins  
HANDYMAN**  
Berwick : 9707 4225  
• MAINTAIN • SECURE • IMPROVE

*"Have tools will travel"*

This is a paid advertisement

## BEACONSFIELD CHIROPRACTIC CLINIC

**CHIROPRACTIC** is the science of neuro-musculo-skeletal medicine. It deals with the ills and injuries of the body by locating any point of interference or malfunction of the nerves, muscles or joints which may cause pain or symptoms.

**CHIROPRACTORS** are trained for a full six years at university. This enables the chiropractor as a primary contact practitioner, to appropriately assess a wide range of conditions in all age groups from infants to the elderly. All major health funds and Workcover and TAC cover chiropractic care without referral.

The Department of Veterans Affairs will also cover eligible veterans for their treatment.

**AT the BEACONSFIELD CHIROPRACTIC CLINIC** as well as general and family chiropractic care, we work closely with local sporting clubs for injury management and prevention. We also provide laser therapy and acupuncture.



**Dr. Steven Pratt B.App.Sci (Chiro)**

**Dr. Craig Carter B.App.Sci (Chiro)**

**Member CAA, Member AAV**

**16 - 18 Wood Street, Beaconsfield**

**Tel. (03) 9796 1110**

## LETTERS TO THE EDITOR



Letter to the editor.

**DID YOU KNOW** that before lighting any burning off fire, even after fire restrictions have been lifted, that you must notify the FIRE OPERATIONS BRANCH? Sometimes over zealous local fire spotters report sightings of smoke in the distance to the emergency No 000. In such instances, unless this burn off has been reported to FIRE OPERATIONS, the local fire brigade is obliged to attend.

Often the local volunteers are called away from work and family and they rush to the depot, gear up and the truck comes screaming to the reported fire only to find the fire is, in fact, fully under control and being closely monitored by the homeowner.

Whilst we applaud these concerned citizens who are so fire conscious, we would also ask them to be reasonably sure that the smoke they have spotted is not simply someone burning leaves and branches accumulated while fire restrictions were still in force.

The other way to stop this unnecessary waste of time and energy by our wonderful volunteer fire fighters is to notify FIRE OPERATIONS BRANCH before you light any large fire.

Keep this number close to your phone or in a prominent place so that you don't have to suffer the embarrassment of having the fire brigade come screaming up your driveway because you are burning off a few leaves!

Name and address supplied.

Footnote.

The following points should always be kept in mind when lighting fires:

An adult must be in attendance for the duration of the burning of the fire.

All people lighting fires need to be responsible to ensure the fire is safe at all times

Letter to the Editor.

Dear Sir,

Peter Hansen raises many important points in his recent article on wisdom - a topic we would all do well to reflect on more, and one which could fill many "Banners".

It would seem crucial though to any understanding of wisdom which uses King Solomon as an authority to acknowledge Solomon's own (acknowledged) source of wisdom.

Wisdom is what Solomon (in his wisdom !) asked for, but it was God who gave it. (1 Kings 3:5-15; 4:29-34) Indeed the book of Proverbs, ascribed to Solomon, states "the fear of the Lord (ie. Reverential obedience) is the beginning of wisdom (Prov. 9:10)"

On this basis any quest for wisdom begins as a quest for God and a proper relationship with him. The wise person is one who has a God-centred perspective on all they do. Without a solid foundation any subsequent building is less than stable.

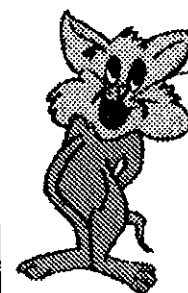
Will wisdom seekers throughout Beaconsfield begin dusting off their bibles and filling empty church pews? I can only hope.

In the words of Solomon himself "wisdom is supreme therefore get wisdom, though it cost you all you have get understanding".

Yours sincerely,  
Brett Morgan

## FREE PET REGISTRATION

So as to ensure that lost or wandering puppies and kittens are returned to their rightful homes and not injured or stolen. The Cardinia Shire Council is offering free pet registration to the owners of dogs and cats under six months of age. Isn't this a great idea!!



This offer can save owners up to \$65 in registration fees and applies to the first registration year, or part thereof, of the animals' life. For more information or a registration form please contact the Community Laws Team on 5945 4296.

**MARIA EVANSON**  
17/1/22 - 28/5/99

Maria Lukas moved to Beaconsfield in 1951 from the Somers Refugee Camp, after being repatriated from Germany after the World War 2.

She built her life in Beaconsfield living in Railway Avenue. In 1958 tragedy struck the family when her husband Tony died, leaving Maria with four children. Maria worked tirelessly to ensure her family were educated and equipped for life.

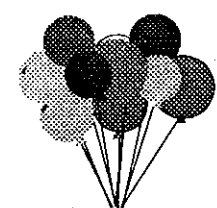
In 1973 she married Tom Evanson of Port Melbourne where he also worked, but they remained living in Beaconsfield. Tom retired in 1983 and in 1987 they moved to Queensland for 4 years. Then returned to Berwick to live near their family. They undertook many trips overseas. On 21/5/99 Tom and Maria boarded a flight to Germany where 1 week later Maria suddenly passed away.

She died where she was born in Lauf, Germany on 28/5/99. She loved her time in Beaconsfield and was one of the original residents of Railway Avenue, Beaconsfield.

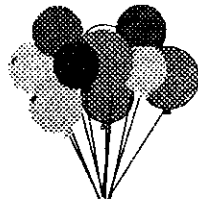
Be prepared before lighting the fire.

If in doubt, at all, talk to the local fire brigade or ring the DANDENONG REGIONAL HEADQUARTERS.

**REMEMBER - FIRE - PLAY IT SAFE.**



## 10th. ANNIVERSARY OF THE BANNER



June Editions of the Beaconsfield Banner have grown from the 6 pages in 1989 to 24 pages in 1999.

As well as the increase in pages, it is noted that advertising has also increased. In the Banner, June 1989, there were 8 businesses advertising. Beaconsfield Automotive Services, Beaconsfield Garden Supplies, Body Profiles, Beaconsfield Squash & Sports Centre, Beaconsfield Timber and Hardware, Beaconsfield Lodge Motel and Beaconsfield Tractor and Mowers have all continued to support the Banner with advertising for 10 years. Currently, 48 businesses advertise in the Banner.

Banner 1989 Headlines:-  
"SUPERMARKET DEVELOPMENT"

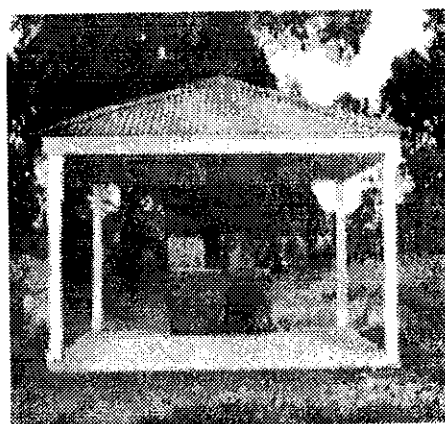
Word has it that a development company has purchased the land behind the Central Hotel and eventually a large supermarket is to be built on the site."

"Taking the Plunge and becoming an Aussie" Joan and George Armitage and Gwen and Ralph Neve became Australian Citizens. It was written that Joan said "with an Irish Grandmother, a Scots Grandfather and a welsh father and a 'Black Country' mother it's all very confusing." "One thing is for sure, were still members of the human race, what-ever our roots may be."

1992 - Beaconsfield Community centre was officially opened by Shire President, Cr. Rundell on May 1992.

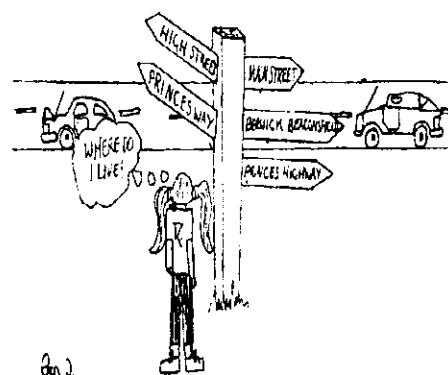
June 1993 Banner Headlines :-  
NEW MULTI-PURPOSE  
CHILDCARE HALL FOR  
BEACONSFIELD"

A new multi-purpose childcare hall situated on Beaconsfield Primary School Grounds was opened on July 11th, 1993.



"Barbie for Beacy" A barbecue and gazebo was built in the Bob Burgess Reserve, an addition to the public facilities in Beaconsfield.

"Princes Highway or Clayton Highway". After great discussion in 1993, the debate still continues. See Progress Association Public Meeting - June 29th, 1999.



1994 - "The Station Beautification Project." The idea was to build upon the earlier good work accomplished by BPA & with the help from St Francis Xavier students two murals and 4 garden boxes were set in place on the Beaconsfield Railway Station platform.

"The Gift is Mine"

Keith Goodman who's kidney was compatible to his wife Anne; relates of the wonderful moment after the successful transplant. "You don't think of gifts and noble deeds or anything like that - just life. The chance that someone you love may live is all you think about."

Anne and Keith have made many remarkable and enjoyable journeys during the last 5 years including a recent trip to Alaska, Canadian Rockies and Hawaii.

1997- Iris Lewis Award. Naomi Harris was presented with the first Iris Lewis Award on 29th April, 1997. The Iris Lewis Award is an encouragement award for young people who write articles for the Banner.



Above:- Naomi Harris winner of the first Iris Lewis Award.

### THE BEACON PRECEDED THE BANNER

How many would remember "The Beacon" Community Newsletter printed bi-monthly on a single page print out?

It was produced by Jane Poulton who was the President of the Beaconsfield Progress Association.

It was printed and distributed nearly 20 years ago in 1979 but sadly extinguished after only three issues.

## REFLECTIONS 5 YEARS OLD.

Pete and Inge Wiegandt, owners of Reflections Hairdressing since July 1st 1994, are glad they made Beaconsfield their home.

Pete and Inge initially looked at hairdressing salons in 1992 but returned to Europe and continued to run their own salon in Mainz until the business in Beaconsfield became available to buy.

In the 5 years that Pete and Inge have lived in Beaconsfield they have become part of the community. They enjoy the

friendship and community support. Beaconsfield with it's mix of town and country aspects is so far in comparisons to Inge and Pete's hometown Mainz in Germany. They have bought a house in Beaconsfield and enjoy their spare time maintaining both the house and garden together with their cat named "hoppalong" who 'adopted' himself.

Reflections has a regular clientele and is open Tuesday to Saturday's. Phone for an appointment on 9707 3277.



Above:- Pete and Inge Wiegandt.

Below:- Hoppalong the cat.



## HISTORY OF BEACONSFIELD

History of Beaconsfield and photos have been printed throughout the 10 years of the Banner. The photos (below) were recently copied by Paul Cohen. Who remembers the Beaconsfield Butcher Shoplike this?

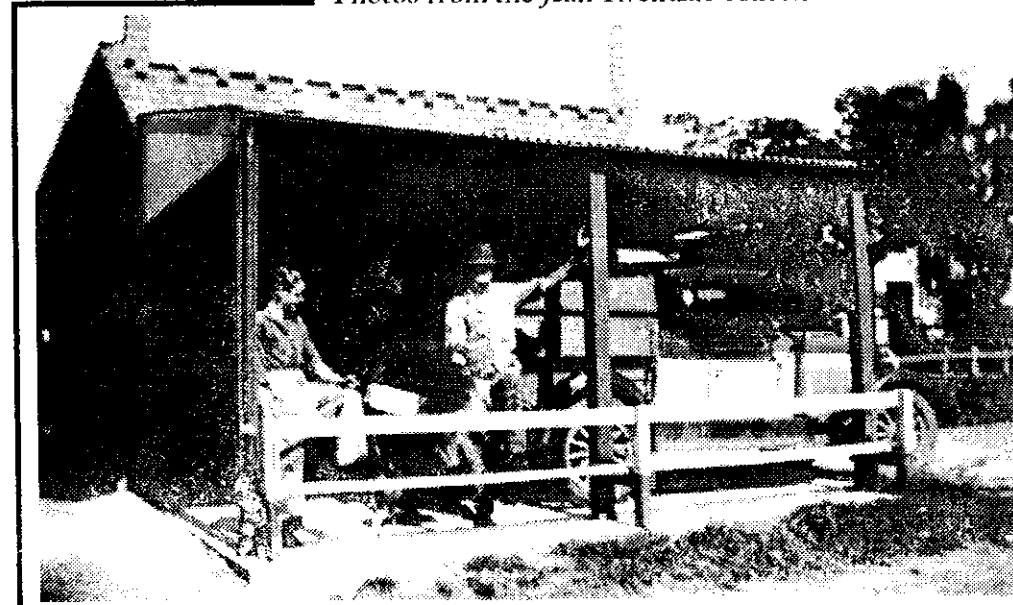
It is important that anyone has old photo's of either Beaconsfield or Beaconsfield residents that they please arrange for these to be copied. Members of the Progress Association are willing to arrange this.



Above:- Photo of Ken Alender and Hector (Dick) Cole inside the Butchers shop.

Below:- Jim Parkes and Hector (Dick) Cole outside the old butchers shop in Wood St. Beaconsfield. Note the old Ford ute parked under the verandah.

Photos from the Jean Tivendale collection.



# LONG TIME RESIDENTS MOVING ON

By Ted Horton

Colin and Allison Lack are leaving Beaconsfield to move to Pakenham. They have had the same home in Wood Street for the last 36 years.

They bought in Beaconsfield in 1963 when the town was 'a different place'. Wood Street was not sealed, had no pavements, no gas and no sewerage. Their water supply came through water pipes constructed from timber. Their toilet was the traditional 'out back' structure in the garden at the rear. With fewer houses around, the view to Lord Casey's big home on the hill (Edrington) was very clear from the front of their house. The view to the South was also unimpeded. Across open paddocks they could see the steam trains puffing their way down to Gippsland from Melbourne Town. People called the Elms had the General Store in Beacy then, flanked by the briquette store one side and their residence on the other. The main highway came through town then with the prominent 'WhiteHouse' roadhouse/servo and Mobil servo on the South side and the Community Hall up by the Hotel on the North side. Wood Street came out onto the highway in a straight line past Mrs Roberts property now occupied by the Kindergarten. Beaconsfield was such a friendly 'country' town in those days they say.

Both Colin and Allison played an active role in the community of Beaconsfield mainly in support of their children Michelle and Craig. Allison was on the Infant Welfare Committee at the old hall, on the new kinder committee, Vice President of the Primary School Committee, three years as 'Brown Owl' (leader) of the Brownie Pack (Girl Guides), helped greatly in setting up the new Berwick High School and supported Juniors at the Tennis Club and at the Football Club alongside at the Beacy Reserve. With work commitments, being twenty years at Home Pride Bakery, working all hours, Colin was as active as possible with Craigs' interests in Scouting and Football.

Colin originated from the North East of the State and will be remembered by his great sense of humour and good fun which he retains to this day. Allison, also from the country in Eastern Victoria, is more the 'quiet achieving Mum about home'. She is recovering from a recent illness and this is their motivation to move to a smaller home in Pakenham.

Both hard working people they ran the Milk Bar in Beaconsfield for five years in partnership, and later owned a restaurant/coffee lounge business in Rosebud. Colin also drove a truck and courier service for Blue Circle for 12 years.

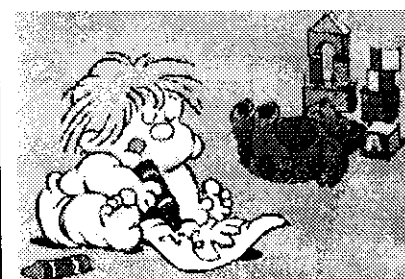
Asked what they remember Beaconsfield for most of all, they say its friendly people. Allison remembers one of the most significant happenings in Beaconsfield, was when the giant trucks came through town carrying boilers bound for Loy Yang. They skirted the Berwick Hill and came around Inglis Road and Emerald Road into Beaconsfield. The turn East onto the highway demanded great skill of the drivers in the front pulling rigs. Colin remembers vividly the events of Ash Wednesday in '83 when many of the town thronged in front of their Milk Bar as red hot sparks showered down from the orange glowing sky. Their business was used by officials as a strategic command and communications centre. Many townsfolk were wandering around dazed and confused by the rapid events unable to get through to their homes and loved ones. Some pretty big floods have happened along the creek too, says Colin.

Once an avid gardener Allison plans to take it easy now in her retirement days in Pakenham and depending on her health, she and Colin would like to travel a bit around Australia. Colin will be devoting much of his time caring for Allison but still very much enjoys following the Footy at local matches and at Waverley. They also have five grandchildren to occupy their time well.

Beaconsfield bids them both well in their move to Pakenham.



Above:- Colin and Allison Lack. Photo by Paul Cohen.



BEAconsfield CHILD CARE & EARLY LEARNING CENTRE  
6 Stella Street BEAconsfield

PHONE B.H 9707-5532  
A.H 041-951-2243

TERM 3 (12th July - 17th September) -

## LONG DAY CARE RATES

FULL TIME -	WEEKLY MON. TO FRI.	\$145.00
PART TIME -	DAILY	\$30.00
PERMANENT-	HALF DAY SESSIONS	\$16.00

BEFORE AND AFTER SCHOOL CARE  
TO LOCAL SCHOOLS \$8.00

- FULLY QUALIFIED STAFF -

- Registered Nurse, Midwife,  
Maternal and Child Health
- Mothercraft Nurse
- Kindergarten Teacher

- NUTRITIONALLY BALANCED MEALS

- COMPUTER SKILLS SESSIONS

- SESSIONAL 3 YEAR AND 4 YEAR  
OLD KINDERGARTEN

- ALL ENQUIRIES WELCOMED  
GOVERNMENT ASSISTANCE  
AVAILABLE

## BERWICK MONTUNA GOLF CLUB

# BINGO

COSY FIRESIDE  
DINING FRIDAY  
AND SATURDAY  
NIGHTS

EVERY WEDNESDAY  
EYES DOWN 8PM

- \* Two fun & friendly sessions.
- \* Great Cash & Prizes To Be Won
- \* Delicious 'Homemade' Supper



All Welcome

For Enquiries or Bookings TEL. 9707 1887  
Beaconsfield / Emerald Rd. (Entrance at Milk Bar)

## BRICKBATS AND BOUQUETS

Bouquets: To the Shire Contractor who maintains the median strip. The gardens at the western end entrance to the town are a picture.

Brickbats: To those in the community who continue to live in the past. The Commissioners and the Shire of Pakenham are history. We are now Cardinia Shire. Lets go forward into the new Century with a positive attitude to our township.

Brickbats: To those drivers who park their vehicle in NO PARKING AREAS and in doing so endanger the life of others.

Brickbats: To the people seen dumping a cat in Souter St. Your brown car was seen.

## BEREAVEMENT

It is with regret that we note the passing of Royce Thompson. Our condolences to the family.

SCOTT HOLDINGS PTY LTD  
For prompt, friendly service with

**BOBCAT  
BACKHOE  
TIPPER AND  
RETAINER WALLS**  
**TELEPHONE**  
**9707 1685**  
**0418 532 358**  
**Stuart Scott**  
PAYNE RD. BEACONSFIELD

• GET FIT •

LOSE WEIGHT



*Sensational  
Special*  
12 Months Full  
Membership  
**\$295**  
NEW EQUIPMENT  
NEW CIRCUIT  
**OPEN 7 DAYS**



LOSE WEIGHT

**BEACONSFIELD SQUASH &  
FITNESS CENTRE - 9707 2929**  
29 Wood Street, Beaconsfield

If you have a Legal Problem call -

**WOLLERMAN  
SHACKLOCK**

BARRISTERS & SOLICITORS

We provide a full range of Legal Services including

- \* Subdivisions \* Wills and Probate \* Commercial Law
- \* Motor Vehicle Accidents \* Land Development \* Legal Services for Small Businesses
- \* Fixed Price Conveyancing - Sales and Purchase \* Criminal Law including Traffic Offences
- \* 24 Hour Service \* Family Law, Adoption and De Facto Spouses

**FIRST FLOOR, 8 GLOUCESTER AVENUE, BERWICK**  
**Telephone: 9707 1155, Facsimile 9707 4834**

## THE STEERING JOINT

WE AIM TO BE THE BEST AT WHAT WE DO

BECAUSE YOUR CAR DESERVES PEOPLE WHO CARE

- ★ FULL MECHANICAL REPAIRS
- ★ SERVICING OF ALL MAKES & MODELS
- ★ ELECTRONIC TUNING
- ★ BREAK & CLUTCH REPAIRS
- ★ FRONT END REPAIRS
- ★ WHEEL ALIGNMENT
- ★ WHEEL BALANCING ON & OFF CAR

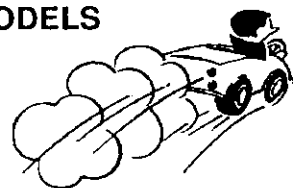
FREE PICK UP & DELIVERY LOCAL AREA

EVERY VEHICLE SERVICED AT  
THE STEERING JOINT

IS DETAILED FREE! OF CHARGE

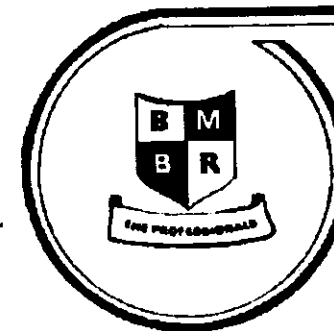
YOUR CAR WILL LOOK AND FEEL GREAT

**ALL WORK GUARANTEED**



FREE  
NO OBLIGATION  
QUOTES

12 WOOD STREET  
BEACONSFIELD  
PHONE 9707 3393



## Berwick Motor Body Repairs

PTY. LTD.

SPECIALISING IN  
INSURANCE SMASH REPAIRS  
FOR ALL MAJOR INSURANCE COMPANIES

Using Universal Car Bench

Dedicated Jig System

European Paint Baking Oven

24 HOUR TOWING SERVICE

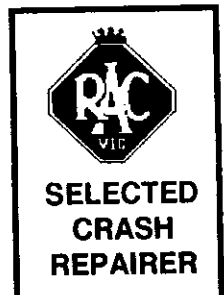
**9796 1199**

BODY SHOP

**5943 2343**

PRINCES HIGHWAY  
OFFICER, 3809

COURTESY CAR AVAILABLE



## TAX TIME AGAIN

At this time of the year most people are commencing to consider the lodgement of their income tax return and hopefully getting a tax refund. With the introduction of simplified tax return forms and substantiation laws, it has placed a greater responsibility on taxpayers to maintain proper records and documentation to enable substantiation of returns if requested to do so by the Australian Taxation Office. The audit activities undertaken by the Australian Taxation Office have increased substantially over recent years in line with the concepts of self assessment and income matching facilities.

Some helpful hints to assist you in preparing your income tax returns include:

- \*ensure income from all sources is disclosed in your return including Interest, Dividends, Trust Distributions, Net Property Rental
- \*employees claiming in excess of \$300 for work deductions must provide documentary evidence to the Australian Taxation Office on request i.e. invoices, receipts etc .....The \$300 limit does not include claims for car, meal allowance, award transport allowance and travel allowance expenses.
- \*the best claims for business or work related car expenses are usually based on the "log book" method which requires receipts for all expenses (except fuel) and a log book meticulously written up daily covering a continuous twelve week period. Log books are valid for five years only.
- \*claims for self-education expenses have been modified to exclude claims for travel expenses, if you receive Austudy however, the first \$250 may now be allowable.

\*claim for Family Tax Assistance for children under 18 (student if 16-18) if payment was not received direct from Centrelink

\*claim all rebates you are entitled to including Superannuation Contributions, Net Medical Expenses over \$1250, Dependents including parents, spouses' parents and invalid relatives, private health insurance (if not already rebated against premiums)

\*as the claims for dependant spouse with child tax rebate is less than the basic Parenting Payment it is recommended that the carer makes a claim for Parenting payment directly from Centrelink

\*most assets acquired after 19th September, 1985 are subject to Capital Gains Tax on disposal with limited exemptions including principal residence, motor vehicles (non commercial) and certain personal effects. If you have capital gains this tax year, consider selling any assets where market value is less than cost, so that the loss can offset the gain(s)

You should consider seeking professional assistance from a Registered Tax Agent to prepare your income tax return using ELS facilities (14day refund) who should also be pleased to discuss other tax, accounting and financial matters.

GRAEME J. TAYLOR. C.A.

See Beacy Notice Board Page 20

## GARDENING WITH BERWICK GREENERY

The most important jobs to be carried out over the winter months are pruning and spraying of roses and fruit trees. To assist you with these tasks we are holding demonstrations - "Rose Pruning and Care" on Saturday 19 June and Sunday 11 July, and "Fruit & Ornamental Pruning and Care" on Saturday 12 June and Sunday 4 July. The talks take place under cover at 2.00 pm, and we will even give you a free tea or coffee. John Grundy has the ability and knowledge to make these tasks easy for even the beginner.

Do not prune flowering plants such as flowering cherries, crab apples, lilacs and weeping trees until after they have flowered. Leave any frost damaged plants and frost tender specimens such as Fuchsias and Impatiens until the chance of frost has passed, usually late August. Hydrangeas can be pruned now.

In the vegie garden, Asparagus and Rhubarb crowns as well as Strawberry runners can be planted now, together with most of the leafy vegies such as cabbage, cauliflower and broccoli. Don't forget the vines and berries available bare rooted such as grapes, raspberries and kiwi fruit.

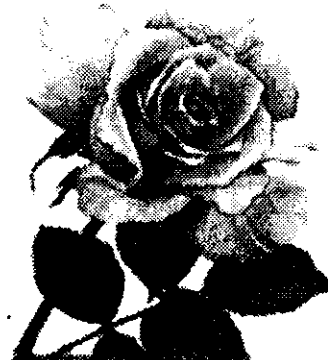
Many plants can be transplanted at this time. We recommend taking as large a root ball as possible, pruning the top to compensate for root loss, the use of compost of planting mix when transplanting, together with watering in with IGCV plant starter to get the new roots moving quickly.

Still time to plant Pansies, Primulas, Polyanthus, Stock and some other annual plants. If you miss the boat, don't despair, pots of colour in small and large sizes can be purchased to give instant colour to your garden or pots all year round.

Cyclamen, Hellebores, Fricas, Daphne, Osmanthus, Camellias & Rhododendrons are amongst the plant varieties that will provide winter colour. Try them in your garden. Colourful foliage and berries can also be a winter feature. The best way to obtain year round colour is to visit the nursery every season to see what is in flower, and plan your garden to give you flowering pleasure all year.

Indoor plants generally require less water over the colder months, however if yours are near a heating vent or you have floor heating this will need to be taken into account. It is better to allow most indoor plants to dry out slightly before watering, rather than overwatering. Do not leave them sit in saucers of water, but rather take the plant to an area where you can give it a thorough water and allow it to drain before replacing.

Happy gardening



## BEACY'S NOTICE BOARD

### Beaconsfield Counselling Service

**Children, Adolescents and Adults.**  
Educational assessments, toddler problems, bullying.  
Slow to learn, Stress and workplace problems.  
Anxiety and Depression, Pain, Trauma and injury,  
Grief, assertion and self esteem, confidence and motivation.

Telephone : (03) 9796 2277 (Voice mail)  
Consulting: Suite 3, 27-30 Wood St.,  
Beaconsfield. 3807

## DENTURE CLINIC

### ADVANCED DENTAL TECHNICIAN

Bob Reed & Paul Reed

\*Full Denture Services - Mouthguards  
\* Denture Repairs - Relines  
Victorian Pensioner Denture Scheme.  
Veteran Affairs Patients, Workcare Claims  
Private Health Rebates

14 Wood St.  
Beaconsfield.

Ph. 9707 4015

## St. John's Anglican Church

1 St Georges Rd.,  
Upper Beaconsfield

MAKE TIME TO GET BACK TO GOD  
Sunday Services

8.30am. Traditional  
10.00 am. For families - with Kid's Church during  
school term.  
7.30pm. Youth Service - 2nd. & 4th. Sun. of month.

Mike Flynn (Vicar) 5944 3410



If you would like to advertise in  
the Banner contact  
Willem Boon on 9707 5053

## BEACY'S NOTICE BOARD

## WINDOW CLEANING

Domestic & Commercial

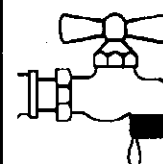
**JOHN PLOWMAN**

18 Years Experience

Ph. (03) 9704 1271

or

Mob. 0418 597 630



103 Princes Hwy.  
Beaconsfield 3807

**R. A. Weeding**

Mob: 0412 057 325  
or 018 324 332

A.H.: 9796 2248  
Fax: 9796 2241

## PLUMBERS

**Dr. Robert A. Panjkov**  
B. D. Sc. (Melb.)

## DENTIST

Unit 4 87 Wood Street  
Beaconsfield 3807

Ph. 9707 3508

## ACACIA RISE ALPACA FARM

Phone 9707 5589 / Fax 9768 9100



**Kaye Chapman**

'Breeders of Beautiful Black'  
P O Box 173 Beaconsfield  
Vic 3807

**MELALEUCA LODGE**  
CNR BRUNT RD., PRINCES HIGHWAY

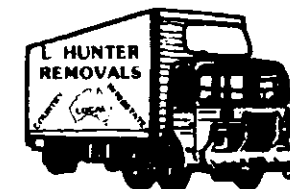


Modern accommodation  
including deluxe spa units

Wedding Receptions  
Conferences  
Functions

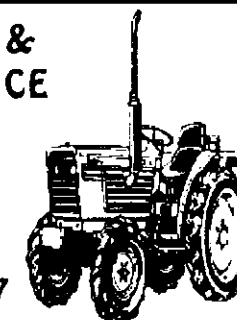
Contact Neilma or Graeme  
for Inspections or Bookings 9796 1044

**LEIGH HUNTER**  
REMOVALS & STORAGE  
LOCAL COUNTRY INTERSTATE



PRE-PACKING SERVICE / ANTIQUE & PIANO SPECIALIST  
PHONE: (03) 9707 5700 OR 9768 9153  
LOT 103 - 110 Princes Hwy. Beaconsfield Vic. 3807

**GRASS SLASHING &  
FARM MAINTENANCE**



**Bryan Park**  
Phone: 9707 2007  
Mobile 0411 402 110  
FREE QUOTES

## BEACONSFIELD PLUMBING SERVICES

R.A. & C.J. HORE PTY LTD. A.C.N. 005 398 701 Lic. No.  
23339.

YOUR PLUMBING PROFESSIONALS  
Domestic \* Commercial \* Industrial SERVICING  
ALL SOUTH EASTERN SUBURBS

Ross & Cheryl Hore  
6 Horner St.  
Beaconsfield 3807

Ph. 0417 034 523  
A.H. 9707 2832  
Fax: 9707 2832

## BEACY'S NOTICE BOARD

### GRAEME TAYLOR A.C.A. CHARTERED ACCOUNTANT

- \* Registered Tax Agent (E.L.S. Facilities)
- \* Registered Company Auditor
- \* Thirty years professional experience

Providing personalised financial, taxation, management accounting, auditing, superannuation and corporate secretarial services.

Appointments at Oakleigh or Beaconsfield  
Okey Stopp & Taylor 9569 7516



*Kevin Sheean*

*Masseur*

*By Appointment Only*  
(03) 9707 1701

*\*Therapeutic/Remedial/Sport Massage \*Foot Reflexology  
Aromatherapy Steam Tube*

## TYREPOWER

**RAY LAWN**  
*Proprietor*

**BERWICK TYREPOWER**  
43 Clyde Road, Berwick, Vic. 3806  
Tel 9707 3177 Fax: 9796 1836

### LANDSCAPING / ROTARY HOEING GRASS SLASHING / LAWN MOWING

- \* Large and Small areas catered for
- \* Grass pick-up or evenly scattered

Phone Graham  
9796 1297 or 0418 563 456

**THE BACK VERANDAH**

ANTIQUE FURNITURE RESTORATION

FRENCH POLISHING WOOD TURNING GENERAL REPAIRS

ROB & ANNETTE PH: (03) 9769 9902 ALL HOURS  
MOBILE: 041 758 8908

### ELECTRICAL CONTRACTOR



*Domestic, Commercial,  
Industrial  
installations and repairs*

**PETER STEELE - R.E.C. 8772**

Phone 9707 4906  
Mobile 0418 392 370  
23 Hudson Street, Beaconsfield.

### JUST PATCHWORK



*Rhonda Barry*

Shop 8, 27-33 Wood St.  
Beaconsfield Vic. 3807  
Monday - Friday: 9.30 to 5pm. Ph.: (03) 9796 1667  
Saturday: 9.30 to 1pm.



\* Fun Packs with easy to follow Idea sheets  
\* Hard to find items. Matchsticks, wiggly eyes, craft punches  
\* Card Making Supplies, Rubber Stamps & Accessories  
Demonstrations or individual Orders Benefit from our hostess gifts  
Crafty Kids is for all kids at heart.  
Ages 3 to 103  
Consultant ID 1228: Margaret Boon 9707 5053

## VIDEO VIBES WITH DAVID GRIFFITHS



With all the hype surrounding the release of George Lucas' new blockbuster Episode 1: The Phantom Menace it may be worth re-watching the original Star Wars Trilogy.

Currently available from Beaconsfield Family Videoland are the Special Editions of "Star Wars", "The Empire Strikes Back" and "Return of The Jedi". The Special Edition movies have all been digitally

mastered and contain new never-before-seen footage, enhanced sound and improved visual effects.

So now you've seen Episode 1: The Phantom Menace do yourself a favour and revisit the originals. This is the perfect way to spend a freezing cold weekend afternoon.

If you are after a great new release take your pick from "The Big Hit" (does to Action genre what "Scream" did to horror), "Wild Things" (the best thriller of the nineties) and "Lock, Stock & Two Smoking Barrels" (if you liked "Trainspotting" you'll love this.)

Ratings: Star Wars Trilogy = \*\*\*\*\* The Big Hit = \*\*\* Wild Things = \*\*\*\*\* Lock, Stock & Two Smoking Barrels = \*\*\*\*\*

## SHOW ME THE MONEY WHO HAS THE HOT MONEY?

Someone around the town recently rang Fox FM's Barry Bissell and Kate Patton to report themselves in the Fox FM's "workplace Survey".

The person told Bissell and Patton they were calling from Beaconsfield and admitted they had recently cost their company money, by "melting the till".

They apparently forgot that the till had been placed in the oven/bain marie and started it up. The result was some very shrivelled plastic notes (including fifties) and some baked coins.

Would the person who has money to burn please step forward, we'd love to hear from you.

## PLAY IT SAFE

Just a timely reminder that when having any electrical work done about your place that you ask the contractor to show his licence and whether he will supply a Certificate of Electrical Safety when the work is completed. If he doesn't provide you with both of these maybe you should look elsewhere and get the work done by someone who understands the new rules.

## WINTER COMETH!



Above:- Rev. Gary Piper

Do you look forward to the winter? Being a west Aussie, I'm used to summers where temperatures soar into the forties frequently, and the hot Easterlies blow for weeks on end. But even here in Victoria the summer can be grating and we long for the cool weather. But when it has come that too can be pretty hard to take, and we long for the warm weather. What I notice about the winters is how soon it is dark, 4.30 PM and it's nearly night!

I'm not a good gardener but there are things that we have to do with our garden, but this time of year the days are so short. As well, there some trees I'd like plant, the winter is coming when it will be too late. Jesus said "night is coming when no man can work" probably because it was getting late in the day, but

also Jesus knew that his time among us was short. Every opportunity had to be grasped to do the work and will of God, the Father.

Not much has changed since Jesus' day. We do not know how soon our time will come to a close, and life still "hangs by a silver thread". It really is imperative that we do God's will. If we wait for a more convenient time, it might be too late for planting anything of spiritual and eternal value! As Jesus said, "When the Son of Man comes, will He find faith on the earth? When the Son of Man returns will you be called "good and faithful servant"? When Jesus gives His rewards out will you be told, "Well done, enter your Master's rest"? It will be too late then to plead, too late to act in faith, too late in the winter.

Winter is nearly upon us, I hope you have your garden in order. But even more importantly, I pray you will be getting ready spiritually, so that when Jesus comes again you will be all prepared. May God bless you with a lively faith, working out in faithfulness to Him.

Rev. Gary Piper, Pastor of the Beaconsfield Baptist Church



## BEACONSFIELD TENNIS CLUB

(Written by M. Chatfield)



### ANNUAL CLOVER COTTAGE LUNCHEON

Everyone welcome - come alone or with friends. Wednesday 23rd June 1999. 12 noon - 2.30pm. 3 course lunch. Cost \$30.00 per person. Contact - Margaret Chatfield on 9707 2016. Midweek Ladies presentation will take place.

### MIDWEEK LADIES AUTUMN SEASON

Congratulations to :- Tuesday Sections 7, 9 & 10, Wednesday Sections 1, 6, 9 Red, 9 Blue and Thursday Section 2.

Tuesday Section 7 were put

out in the first semi final. Sections 9 & 10 were Runner-ups both teams lost by 3 points. Wednesday Section 1 were put out in the Preliminary final. Section 6 were Runner-ups. Team members :- Carol Godham, Sharon Powell, Sharon Prain, Adele Goldsmith, Jill Hannon.

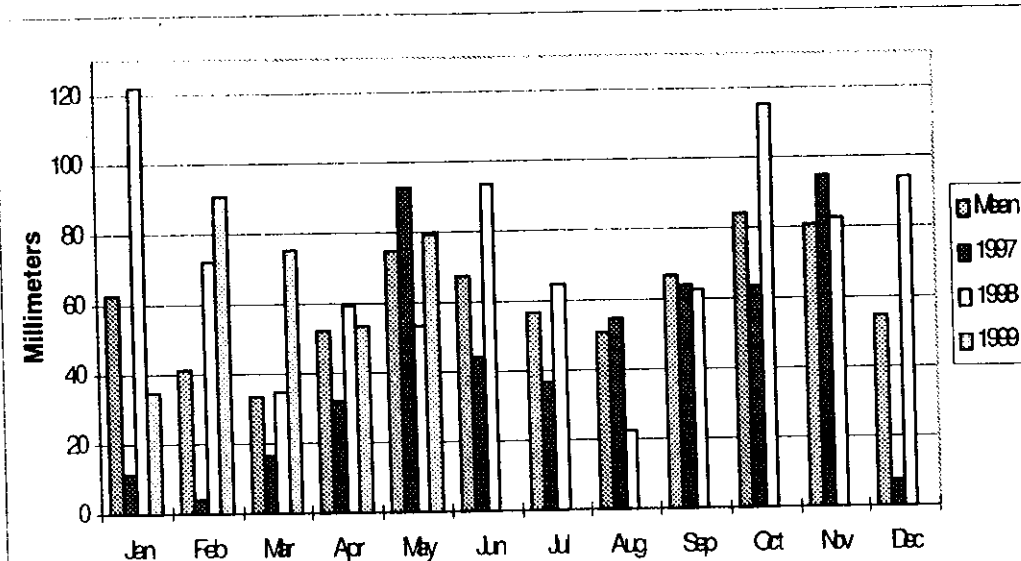
Section 9 Red - Premiers. Team members :- Robyn McKay, Jacqui Manning, Ailsa Johnson, Patsy Mayes, Linda Drummond. Section 9 Blue - Runner-ups. Team members - Joy Douglas, Julie Mason, Jo Underwood, Chris Clinnick, Jan Amer.

Thursday Section 2 finished second. Midweek ladies contact for Spring Season, Glenda Golton - 9707 2906.

FRIDAY SOCIAL Friday - 9.30am - 12 noon for social tennis. Mums with or without toddlers welcome. Contact Margaret Chatfield, 9707 2016.

## BEACONSFIELD'S RAINFALL

From Bob Cooper



## BEACY BOYS IN COUNTRY CHAMPIONSHIPS.

Congratulations goes to the six Senior Beaconsfield Football Club players who were recently represented the West Gippsland Football League in Round 1 on the VCFL Booze Less Country Championships against the Wimmera team.

The Beaconsfield players selected were Ed McNally, Chris Studham, Danny Shaddock, Ross Jackson, Leigh Clifford and Hayden Robbins.

All players played well on the day with Hayden Robbins kicking six goals and Leigh Clifford and Danny Shaddock kicking one goal each.

The West Gippsland team was also coached by Beaconsfield coach, Russell Rowe.

## Beaconsfield Banner

### ALL BEACY FOOTBALL TEAMS DOING WELL

At the conclusion of Round Six of the West Gippsland Football League season all Beaconsfield teams are going strongly.

The Senior team is currently second on the ladder, with Hayden Robbins leading the goal kickers table with 47 goals.

The Reserves are also currently second, and their leading goal kicker is Ben Bonadio who has kicked 11 goals (3 behind the leader).

The Thirds are also second on the ladder, and Tim Robertson has kicked 25 goals for the season (2 goals behind the leader).

The Fourths are on top of the ladder, and Adrian Joliffe has kicked 18 goals (6 behind the leader).

It is also worth mentioning that of all the Beaconsfield Football teams have only lost one game between them. Well done boys.

### MIXED RESULTS FOR NETBALLERS

Beaconsfield Netball teams have had mixed results so far this year. The A Grade team is currently 4th on the ladder, B Grade is 2nd, C Grade is 3rd, the U17's are 8th, the U15's are 6th and the U13's are 11th.

We wish the girls all the best for the remainder of the season.

## Beaconsfield Banner

### QUOTATIONS

Reputation is often got without merit and lost without fault.

English proverb

Youth is perpetual intoxication, it is a fever of the mind.

Rocheffaucauld - Maxims 1665

It is an illusion that youth is happy, an illusion of those who have lost it.

Somerset Maugham

### DISCLAIMER

While every care has been taken in preparing this newsletter there may be something that has been overlooked or printed incorrectly. Please give us a call if articles or adverts do not appear as you intended.

Some articles and photo's are covered by copyright, please have the courtesy of contacted us if you wish to copy any part of the Banner.

### FREE

White Doves and Ringneck Doves. 9707 5577

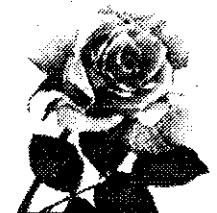


### WELCOME

Welcome to Karen and Mark Van Den Berghe [and daughter Ellie] and Gavin Van Diemen who will take over the newsagents/milk bar from the 30th June.

### MAILING LIST FOR THE BANNER

For those people who are interested in receiving the Banner by post, this can be arranged from February, 1999, for a pre-paid cost of \$6. per year. Please send name, address and money to: Treasurer, Beaconsfield Progress Association, P.O. Box 217, Beaconsfield 3807



### CLOSING DATE FOR NEXT BANNER IS 17th. JULY 1999

Like to advertise in Beacy's own paper "THE BANNER"

Fill in the form and leave it at the Post Office. Name of Advertiser.....

Phone Number.....

Address to which account is to be sent.....

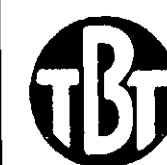
Message.....

### Rates for advertising:

1/4 page in a single issue \$30.  
1/2 page in a single issue \$55.  
Full page in a single issue \$90.

All above rates 10% discount if paid in advance.

Beacy's Notice Board \$12.50 per issue  
Market Place \$1 per line per issue.



## BERWICK TRACTORS & TRADING CO.

INC. HOBBY FARM MACHINERY

"The place where you do a good deal better."

Huge Range of New & Used Tractors & Implements

AUTHORISED DEALER

J. BERENDS • KANGA • SOVEMA • DAKIN IMPLEMENTS  
TRU LINE POST DRIVERS • TOW'N'MOW SLASHERS • ATVS  
Gordon, Tim & Leon Suggate

(03) 5943 2460  
(03) 5943 2470



411 PRINCES H'WAY  
OFFICER, VIC 3809

## BEACIE SERVICE CENTRE

SERVICING & MECHANICAL REPAIRS TO ALL TYPES OF VEHICLES INCLUDING:

- \* 4x4 & Light Commercial
- \* Tune-Ups
- \* Brake & Clutch
- \* Front End Work
- \* Exhaust Systems
- \* Transmissions
- \* Motors

Licensed Roadworthy Tester



Lic Vic Roads Vehicle Tester

MAJOR & MINOR WORK

- All Guaranteed -

BEACIE SERVICE CENTRE

122 PRINCES HIGHWAY BEACONSFIELD

9796 1401

Contact Gary or Ross

**V** FAMILY  
**IDEOLAND**

**BEACONSFIELD**

**PH: 9796-1041**

**OPEN EVERY DAY**

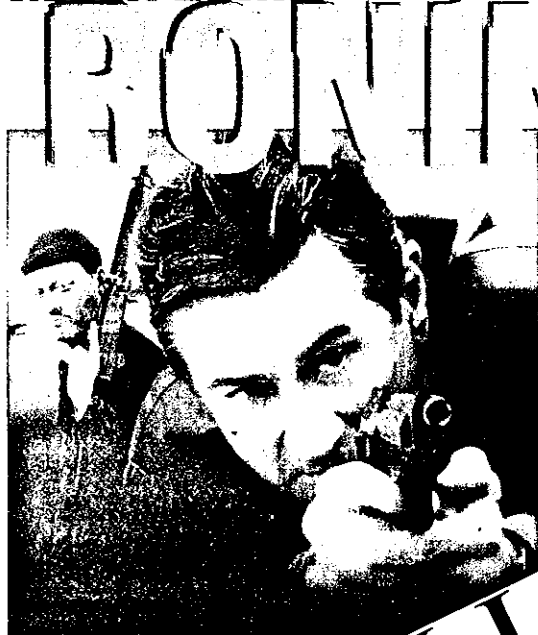
**12 NOON - 9 PM**

**COMING  
ATTRACTIONS**



**HOT  
ACTION  
TITLE**

**Robert De Niro**



**Tom Hanks**

**Meg Ryan**

**You've Got Mail**

**THE WATERBOY**

**ENEMY OF THE  
STATE**

**URBAN LEGEND**

**MEET JOE BLACK**

*Paulie*  
Walk the Walk and Talk the Talk.



**RABE**  
PIG IN THE CITY

**ELIZABETH**

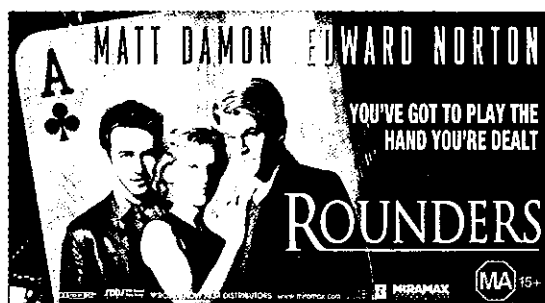
**CHUCKY GETS LUCKY!  
BRIDE OF**

**CHUCKY**

**THE  
FACULTY**

*The*  
**Hairy Bird**  
Get ready for a radical education...

**STAR TREK  
INSURRECTION**



**1/2 PRICE ON  
ALL OVERNIGHT VIDEO'S  
MONDAY TO WEDNESDAY  
(EXCLUDING PUBLIC HOLIDAYS)**

**WEEKLY SPECIAL  
ANY 3 WEEKLYS FOR \$5  
ANY 6 WEEKLY FOR \$10**

**AMPLE WELL LIT PARKING AT REAR OF LIBRARY**