

Beaconsfield Banner

Vol. 10 No. 2 Published by the Beaconsfield Progress Association Inc. April 1998

NEWSLETTER CO-ORDINATOR TED HORTON 9707 1313 ASSISTANT MARGARET BOON 9707 5053 PHOTOGRAPHY PAUL COHEN 9707 2480
ADVERTISING CO-ORDINATOR TONY RUSHTON 9707 1765 BANNER POSTAL ADDRESS PO. BOX 217 BEACONSFIELD 3807

BEACONSFIELD WW1 PERSONNEL.

(Written by K. Cohen & K. Clarke)

The Beaconsfield Roll of Honour from WW1 is housed at Upper Beaconsfield RSL, due to the lack of suitable premises at Beaconsfield. This board is on display and can be seen at any time. The men pictured with a star beside them, were soldiers who gave their life in the war. Soldiers who were in WW2 are listed on general Honour Boards with Upper Beaconsfield Men.

The late Thomas Clair Whiteside and the late Mrs. Cath Roberts arranged for a wreath to be laid at the cenataph every year until they died. The late Thomas Clair Whiteside was the father of local resident Mrs. Kathleen Clarke.

Upper Beaconsfield RSL Hon. Secretary, Mr. Frank Conn, has extended an invitation to all Beaconsfield residents

to attend the Anzac Day service at 11am.

We asked if there was any possibility of transferring this Board to Beaconsfield in the future, when we have a suitable Hall to display it, and were told that they could see no problem with it being transferred.

However, we will reproduce a photograph of the board, frame it and keep it in Beaconsfield, until a new hall is built and we can reclaim the original.

A local Vietnam War Veteran raises our flag every weekend, and we thank him very much.

ANZAC DAY SERVICE, SATURDAY 25TH. APRIL AT 11.00 am. UPPER BEACONSFIELD RSL, HALFORD ST U/BEAC.

BEACONSFIELD PRIMARY SCHOOL

INVITE YOU TO OPENING CEREMONY OF NEW BUILDINGS

on FRIDAY, 8TH
MAY, 1998

RSVP: Helen
9707 1510

By: Friday, 1st May, 1998

There will be no public
meeting of the Progress
Association in April.

PUBLIC MEETING
WILL BE HELD AT
THE BEACONSFIELD
PRIMARY SCHOOL
HALL ON THE
24TH. JUNE 1998.

THIS MEETING WILL
BE RAN BY THE
SHIRE OF CARDINIA
TO EXPLAIN AND SET
UP A
TOWNSHIP COMMITTEE.

FOR MORE DETAILS
CONTACT ALLAN GURR
AT CARDINIA SHIRE
5945 4222



FACTORY DIRECT

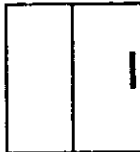
Security Doors



ALSO AVAILABLE
* tuff mesh
* one way vision mesh

Wardrobe Doors

Vinyl & Mirror Sliding Doors

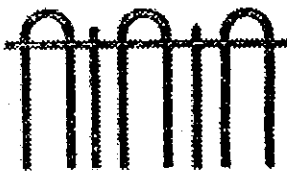


Shower Screens



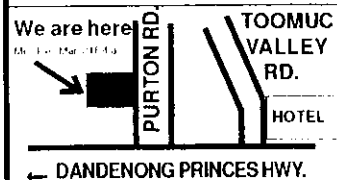
* Sliding Door
* Pivot Door
* Repairs & Reglaze

Pool & Garden Fencing



* Many designs
* Full colour range
* Meet Aust. Standards 1926 & 2820

Vertical Blinds Holland Blinds Slimline Blinds



PAKENHAM DOORS & SCREENS

SHOWROOM/FACTORY
2-1 Purton Rd, Pakenham

Phone: 5940 2225
Mob: 0418 398 319

BEACONSFIELD PRIMARY SCHOOL UPGRADE OFFICIAL OPENING 1:30PM 8TH MAY 1998

AN OPEN INVITATION TO ALL

The students, staff and school council members are excited to announce that their new school building will be officially opened on 8th May 1998 and extend an invitation to everyone to attend and inspect the facilities. At 1.30pm the Honourable Mr. Rob McLellan, Local State Member of Parliament and Minister for Local Government & Planning, will officially open the building on behalf of Education Minister, Mr. Phil Gude. Mr Ellis, Federal Minister for Schools, Vocational Education and Training has also been invited to attend.

The buildings and related ground works were completed and handed over by the builders Behmer & Wright in time for the start of the 1998 school year. Design was by Ed Glac, architect for the Building Service Agency in consultation with the school's Planning Committee. Students and Staff are proud of the new building that have the following features:

- * Seven modern classrooms each including a quiet room retreat, new desks with their own locker and comfy chairs.
- * Spacious library, brightly lit using one huge continuous skylight and modern lighting.
- * Dedicated reading recovery room, computer room and a related technology learning area. The computer area is presently being fitted out with new computers valued at \$50,000 funded by the school community.
- * Carpeting throughout, including classrooms, which adds to the comfort and learning environment. Students have voluntarily decided to introduce the rule "shoes off at the door".
- * Design allowing for classrooms to remain cool on the hottest of days without

the need for air conditioning. Gas wall furnaces will warm class rooms in winter.

* A hardcourt protected by terracing, coloured paving, seating, sandpits and grassed areas.

* Building surrounded with new plants to complement the existing mature trees.

The building is rendered in Gold Karat, trimmed with Red Earth and Misty Green and blends well into the existing treed and garden areas. Child security is a feature in design. During school hours external access to school rooms is restricted via the main entrance controlled by the modern administration and bursars area. Play areas are segregated from public street areas by the building itself. Internal toilets stop the need to leave the building complex during lesson time. A modern sick bay is also included. At time of writing, plans are under way to provide a new adventure play ground and second hardcourt for basketball/netball/tennis jointly funded by the School Council, Parents and Friends and hopefully, local government grants.

Parts of the old school house have been incorporated within the new building.

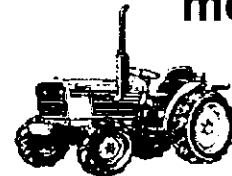
Salvaged bricks are in the main entrance as a wall of dedication to the old school house and announces the school name to visitors. On either side of the main entrance former blue stone window sills now support attractive notice boards and the old school house door is now the focal point within the entrance foyer taking pride in being the door to the Principal's office. Gwen Neve's garden upgraded with a gazebo roof now provides a quiet shady nook for children. Sandpits also incorporate shady gazebo roofs. Ideas are still being sought for use of bluestone salvaged from the old building and timber from the old oak tree.

The Principal, Di Lockwood is pleased with the result as are all members of the school community. Being the first new school building on the existing school site was not without problems for staff and students during the building stage but the result is worth the hassles. On behalf of the Department of Education and the school community, she extends a warm welcome to everyone to attend the opening ceremony, inspect the grand addition to the Beaconsfield community and come to afternoon tea.



Above:- 1998 Preps Shannan Cockayne, Kelly Johnston, Benjamin Cracknell, Dylan Johnston and Vanessa Boon.

**For all outdoor
needs from tractors,
mowers, chainsaws,
brushcutters,
pumps, etc.**



Spares, Repairs & Service

Contact Peter Willis

Beaconsfield Mower & Tractor Centre

114 - 120 Old Princes Hwy.
Beaconsfield.

9707 5368



BEACONSFIELD

**AUTO
ELECTRICS**



3/94 Princes Hwy Beaconsfield

Telephone: 9796 1550

MOBILE 018 353 950 FAX 9796 1144

❖ Change Over Starter Motors & Alternators

* Ultrasonic Injection Cleaning

* E.F.I. Tuning & Repairs ★ Batteries

* Air Conditioning Service & Installation

* Headlight Alignments ★ Tune - Ups

* Onsite Service Calls ★ Full Re-wiring

Also at:

29 Enterprise Ave.

Berwick Ph: 9707 3617



DRUG AND ALCOHOL ABUSE INFORMATION EVENING

Written by David Griffiths

An Information night looking at the topic of "Drug Taking and Alcohol Abuse in Society" was held at the Beaconsfield Community Centre on 24th February, 1998. Guest speakers were representatives from Westernport Drug and Alcohol Services, Grassmere (Cardinia) and Cardinia Community Services.

Through the use of a video

and guest speakers, people who attended the meeting were shown what kind of drugs were available on Melbourne streets, how easy they are to obtain, what affects they have on people, what is being done to prevent the drugs being easily accessible, what is being done to help addicts and what to do if someone we know is on drugs.



BEACONSFIELD FIRE BRIGADE

By Captain Ron Woodfine



Captain Ron Woodfine

Captain Ron Woodfine reported that Fire Restrictions had been called off..... a council decision. However, he warned everyone

not to be complacent as dry conditions remained very prone to bush fire.

Recent call outs included the bushfire outbreaks in Mt. Dandenong and Kalorama. Closer to home was a caravan blaze at Pink Hill.

Future activities will include a controlled burn of Beaconsfield Flora and Fauna Park which may have happened before this April edition goes to print.

As always the local brigade are still needing more volunteers to join.

STREET PARTY IN JIM PARKES RESERVE

Residents of Horner and Souter street met for their annual BBQ in the Park on Friday 21st March. Sausages sizzled while neighbours

chatted. As darkness fell the socialising shifted indoors with tea, coffee and drinks and a light supper.

BEACONSFIELD PROGRESS ASSOCIATION

President Christina Cooper Ph. 9707 1005

Secretary Glorraine Hardy Ph. 9796 1361

**CLOSING DATE FOR NEXT
BANNER IS 19th. MAY 1998**



**Akoona
Park
BERWICK**

**Produce, Trash &
Variety Market**

EVERY SUNDAY

Opens 8.30am. to 1.30pm.

Family Market
Free entry

Phone Bookings on
9796 1455

Keogh's Pharmacy
OPEN 7 DAYS A WEEK

Mon. - Fri. 9am. - 9pm.
Sat, Sun. 9am. - 6pm.
Public Hol. 9am. - 2pm.

Public Fax Service 9796 1645
for
HOME DELIVERY

Agent for:
MEDIBANK PRIVATE
A.N.A.
LATROBE
YARDLEY COSMETICS
CONSTANCE CARROL
AUSTRALIS
FRENCH PERFUMES

9707 5187

Invalid Equipment for Hire
or Sale.
Ear Piercing
Pregnancy Testing
Photocopy Facilities
Fax Facilities

Agent for: KODAK
24 exp film \$7.95

Reprints 1/2 Price for 10 or more
1/2 price Enlargements : 20 x 25cm

Shop 2/16 - 24 Princes Highway
BEAconsfield



BEAconsfield COMMUNITY CENTRE

P.O. Box 2 Beaconsfield 3807.
Ph. 9707 3449

Office Co-ordinator - Jeanette Cunningham, Occasional Care Directress - Chris Watson, Pre-Kindergarten Directress - Fiona Hasson. All our regular groups have returned and the number of new members has increased. Regular groups include: Midway, Line Dancing, Beaconsfield Artist Group, Walking Group, Creative Embroidery, Introduction to Computers, Dance for 5-7 years olds and Pre-schoolers, Calligraphy, Playgroup, Occasional Care and Toy Library. We welcome new members at any time of the year.

TERM TWO - NEW COURSES

**CHILD SAFETY -
WEDNESDAY MAY 27TH**
Time : 8.00 - 9.00pm Cost :
Coin donation How to talk to
young children about safety
and leave them feeling safe
and secure. Safety inside the
home, outside, away from
home and in public places
will be covered. Jenni
Butterworth from Pakenham
Police is an experienced
speaker on this topic.

DESKTOP PUBLISHING -
Day and time to be arranged.
Suitable for brochures,
newsletters and advertisements

using Microsoft Publisher.
Please ring and register your
interest.

CRAFT SUPPORT -

We would like to start a craft
support group. Finish those
incomplete projects. Share
ideas and help each other.
Ring Jeanette for details now
on 9707 3449.

OCCASIONAL CARE -

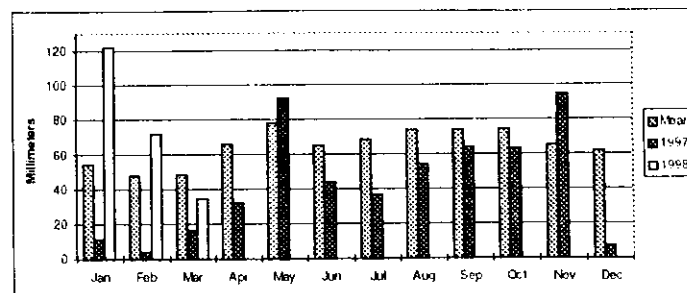
Tuesday 12.15 - 3.15pm and
Thursday 9.15am - 12.15pm
Permanent and casual
vacancies available. A great
opportunity for you to have a
rest, do some shopping or even
a course while the children are
cared for in a safe and happy
environment. Our rates are
reasonable. We welcome your
enquiries and bookings must
be made in advance due to
increased demand.

Programmes have been
distributed. If you haven't
been able to read one, please
call the centre and be
included on our mailing list.
Our centre is open most
weekdays between 9.30am-
3pm. Please ring before
calling in to enrol. We have
an answering machine, please
leave a message, we will
return your call.

Remember. There are no
strangers here, simply friends
you haven't met before.

BEAconsfields RAINFALL

By Robert Cooper



Note: Long term mean rainfall data, Dandenong (Dandenong Composite)
Station #086224 Latitude: 38.01 S Station commenced operation: 1960
Longitude: 145.20 E Mean rainfall measured over last 33.8 years
Elevation: 14.6 meters as at Thursday, 4 September 1997
URL: http://amdisa.ho.bom.gov.au/climate/averages/tables/cw_086224.shtml

LOCAL GIRL WEDS AT GILWILL PARK



Above: - Nicole de Hamer, celebrated her marriage to fellow Scouter, Matthew Dawson, at Gilwill Park, Gembrook. (Photo By Kate McLellan)

One of Beaconsfield's favourite Scout Leaders, Nicole de Hamer, celebrated her marriage to fellow Scouter, Matthew Dawson, at Gilwill Park, Gembrook on 21st February, 1998.

Nicole was attended by her sister Melanie and cousin Kylie Harkin. Both girls were stunning in navy blue taffeta skirts and patterned vests. Neil Poulton was Matthew's Best Man and groomsmen were Lindsay Dawson and Vince Smith both of Springvale. Matthew and the boys looked stunning in long frock coats and black stetsons.

Nicole looked beautiful in a cream silk medieval style dress with gold trimmed matching veil.

She handmade the tiaras for the bridesmaids and herself from tiny gold and blue rosebuds. Roses for the bridal party were grown at Boons Rose Farm, Officer.

We all wish Nicole and Matthew well in the future.

DANDENONG VALLEY BUSHWALKING CLUB

The Dandenong Valley Bushwalking Club (a member of the Federation of Victorian Walking Clubs) would like to hear from anyone interested in joining our well established friendly group. We have members from the Cities of Casey, Greater Dandenong and beyond. Our walks are many and varied and include day, overnight and extended walks, plus skiing, cycling, canoeing and social gatherings.

We have monthly meetings and we would be pleased to see you there.

For more details ring Heather on 03 9704 8137 and she would be pleased to send you our current program of activities or you can write to D.V.B.C. P.O. Box 288, Dandenong, Victoria. 3175.

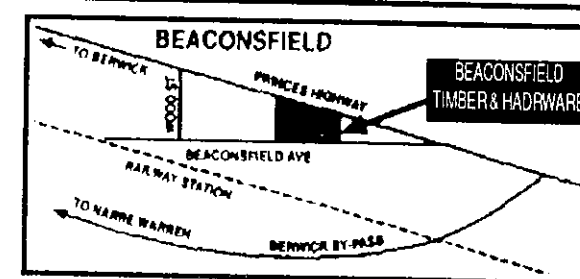
BEAconsfield TIMBER & HARDWARE PTY. LTD.

A.C.N.004 680 148

FOR THE HOMEMAKER

We have a huge range of timber to choose from & the hardware you will need to make that addition or alteration to your home.

PHONE US TODAY!



Phone 9707 5055 Fax 9707 3279
Lot 2 BEAconsfield AVE. BEAconsfield
Easy access from Highway or Beaconsfield Ave.

BEACONSFIELD NATUROPATHIC CLINIC (REG)

New Location at 5 Goff Street Beaconsfield
(Just off Princes Hwy) Melways 111 J12 (4th on right.)

9th Year of practice in Beaconsfield using safe
natural remedies only. T.G.A. REGISTRATION

PETER N. HANSEN

N.D. DIP. HOM. C.I. A.T.M.S.
NATUROPATH HOMOEOPATH IRIDOLOGIST

Member of Australian Homoeopathic Association.

Member of International Federation of

Homoeopathic Physicians.

Member of the Australian Traditional Medicine Society

SPECIAL INTERESTS:- Childrens Problems.
Emotional Illness.
All Acute or Chronic Diseases.

Tel/Fax 9707 1214 For Appointments

MAKE AND MINGLE -

By Ann Taylor.



Above:- Ann Taylor

This FRIENDSHIP and CRAFT group is the place to go on Wednesday mornings 10am -12 noon during school term.

If you haven't been before why not come along. Everyone is friendly and you can make new friends, learn a craft or do some of your own craftwork.

In term 2 we will be doing Beadwork, Glassart, wooden dolls, making boxes will have a painting group. We will also make beautiful Victorian tassel ladies, greeting cards, stamping and quilting.

We meet at Beaconsfield Baptist Church, Cnr Souter Street and Old Princes Hwy. Beaconsfield. Enquires Ann 9707 1996..

CRAFT GROUPS SEMINAR HELD IN BEACONSFIELD

(Written by David Griffiths)



Above:- Make and Mingle representatives at the Seminar

Beaconsfield's Make and Mingle group played host to this years Victorian Baptist Women's Annual Craft Groups Seminar. The Seminar, held at Beaconsfield Baptist Church on 13th March 1998, attracted participants from Melbourne Metropolitan and nearby country areas. Representatives from each church were invited to speak on what they are currently experiencing at their craft groups.

Most churches also had their own craft tables, displaying the various kinds of crafts that had been made by their members. Speakers at the seminar included Robyn Wilson (Baptist Womens Craft Facilitator), Yvonne

French (Make and Mingle), Gary Piper (Beaconsfield Baptist Church Pastor), Jocelyn Tinsely (President of Baptist Women) Pam Shanks (member of French's Forest NSW Craft Group). Jenny Lang of Berwick held a quilting demonstration and a delicious lunch was prepared by members of Beaconsfield Baptist Church.

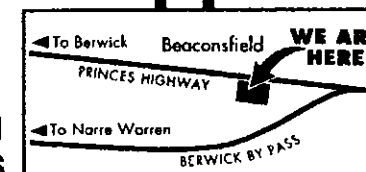
Make and Mingle representatives at the Seminar were Anne Taylor, Irene Jensen, Pam Wasilenko, Bev Griffiths, Yvonne French, Rosemary Piper, Marilyn Hohmann and Peggy Dundas.

Make & Mingle wishes to thank everyone who contributed to making this a great day.

Beaconsfield Garden Supplies

Specialising in:

LANDSCAPING and
GARDEN SUPPLIES



- ◆ Sand
- ◆ Soil
- ◆ Redgum Chips
- ◆ Garden Mix
- ◆ Red Gum Fire Wood
- ◆ Pine Bark
- ◆ Scoria
- ◆ Mushroom Mulch
- ◆ Crushed Rock

SLEEPERS - Old and New

OPEN 7 DAYS A WEEK
- WE DELIVER -

100 Princes Hwy. Beaconsfield
Ph. 9707 5144

Special for locals
Present this
voucher and get

3m³ Delivered Loads:-
Garden Mix \$84 Pine Bark Mulch \$95
Top Soil \$66 Red Gum Chips \$95



DON'T MISS OUR GREAT BISTRO SPECIALS

OUT NOW
EVERY TUESDAY

LUNCH AND DINNER

ENJOY A DELICIOUS RUMP OR PORTERHOUSE -FOR
ONLY \$8.00

* add a sauce for only \$1.00 extra

EVERY WEDNESDAY
LUNCH OR DINNER

CHOOSE A TENDER VEAL OR CHICKEN SCHNITZEL FOR ONLY
\$7.00

* add a sauce for only \$1.00 extra

For great food and friendly service, join us at
"THE CENTRAL"

THE CENTRAL HOTEL : 1 PRINCES HWY. BEACONSFIELD 3807
PH : 9707 1511 FAX : 9796 2578

TO SHARE IN THOUSANDS OF DOLLARS IN CASH
ASK ABOUT SUPER PUB CARD

FRIENDS OF CARDINIA CREEK SANCTUARY

Written by Lisa Loulier

The inaugural meeting of the Friends of Cardinia Creek Sanctuary was held on Wednesday 4th March, with 21 people attending. Only 3 of these people were residents of Beaconsfield. Discussion included the history of the sanctuary, problems (eg. weed infestation etc), and how a Friends Group could assist in managing the Sanctuary. Office Bearers were elected, Judy Smith- President, Linda McLaren - Treasurer and Lisa Loulier - Secretary.

The Cardinia Creek Sanctuary covers 38.3ha of Crown land in Beaconsfield, bounded by Cardinia Creek (West), Emerald Road (East), Inglis Rd.(North), and the Beaconsfield Recreation Reserve (South).

A diverse range of indigenous flora and fauna is found in the Sanctuary, ranging from trees and shrubs to various grasses and wildflowers. This provides habitat for fauna, including a large variety of native bird species, amphibians, reptiles, insects and mammals, including a population of swamp Wallabies.

The Sanctuary is an important resource for Beaconsfield. It is popular for recreational activities such as walking and nature observation and provides a living classroom for local students learning about the environment.

Nearby suburbia is having quite an impact on the

Sanctuary, with many garden plant species invading the area via birds, dumping of garden rubbish etc. Sweet Pittosporum has infested many areas as well as Hawthorn, Boneseed, Perennial Thistle, Monterey Pines, Blackberries and many introduced grass species. These weeds are all inhibiting the growth and regeneration of native species.

The Friends Group want to restore the indigenous vegetation of the Sanctuary and promote environmental awareness within the community.

Working bees will be held once a month and members will work on removing weeds, revegetating with indigenous species assessing areas for future work and maintaining facilities.

The group is encouraging new members of all ages to join. No expertise is needed, just an interest in helping the local environment. If you are new to the area, or haven't yet visited the Sanctuary, we encourage you to visit and enjoy the natural surroundings.

For further information on the Friends Group please call: Lisa (Group Secretary) on 9707 5031, or Sue Harris (Cardinia Shire Environment Officer) B.H. on 59 454 272.

Working bees will be advertise in future editions of the Banner and around local shops.

IT'S A BOY.

IT'S A BOY. (Alpaca that is!) In conclusion to December Banner article.

The 11+ month old wait is over! Moonshine, a beautiful solid black male

cria was born to Delilah on 9th February 1998, at 6.00pm. Mother and son both well.

Kaye Chapman Acacia Rise Alpaca farm

Goodfellows

YOUR LOCAL SUPERMARKET AND BOTTLE SHOP IS OPEN THE FOLLOWING TIMES

	SUPERMARKET	BOTTLE SHOP
MON - WED	8.00AM - 7.30PM	9AM } Till
THURS - FRI	8.00AM - 8.00PM	8AM } Closing
SATURDAY	8.30AM - 7.00PM	10AM }
SUNDAY	9.30AM - 5PM	10AM - 5.00PM

EFT POS & FAX SERVICE AVAILABLE

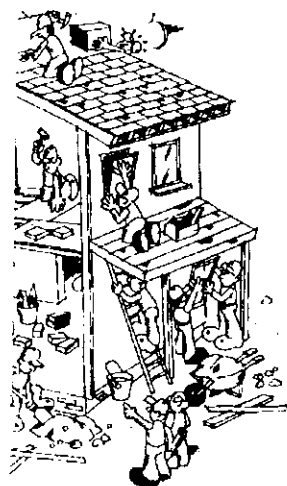
Look out in your mail box for our weekly specials in groceries and liquor

Owned and operated by Has and Kittie Patel who live with their family in Beaconsfield.

Cheers BOTTLE SHOP
20 Princes Highway
Beaconsfield 3807
PH. 9707 1092

GREAT DEALS

ON ALL YOUR HOME IMPROVEMENTS NEEDS



- ★ Redgum Sleepers
- ★ Western Red Cedar W'boards.
- ★ Baltic Pine W'boards.
- ★ Jarrah & Karri Flooring.
- ★ Canadian Oregon
- ★ Treated Pine Boards & Posts.
- ★ Large Range of External & Internal Doors.
- ★ Timber Decking (various species)

DELIVERIES TO ALL AREAS DAILY

So for Friendly & Efficient Service Call in and See the Boys at

VAN STEENSEL TIMBERS PTY. LTD.
LOT 1, PRINCES HIGHWAY, OFFICER 3809
or phone

5943 2371

Fax: (03) 5943 2284

BEACONSFIELD'S HANDYMAN

By Phil Collins

Don't apologise for the job because it is small. Almost every small job is your introduction and could well lead to a long and happy association. One lady could not stand me on my first and only engagement because I quote her word "I can't stand a man who whistles". I thought afterwards I should have replied "At least I don't hum!"

My wife (spouse housekeeper) Elaine does alterations of clothes and her busy time is when seasons change whereas Handymen have seasons of business. Summer is painting

for oil paints - acrylics are O.K. in cooler weather. Winter is clothes driers on walls. Spring is roof season - cracked tiles and leaks. Autumn - doors and draughts ready for the colder weather ahead.

Of course cup hooks and shelves are year round jobs while installing air conditioners is dependent on how hot the forecast.

Now remember - keep looking for ways that WE can improve your property.

9707 4225 Phil Collins - Handyman.



Above:- Phil Collins who can be contacted on 9707 4225.

BE WELL INFORMED!

Don't just wonder - find out. Where better than at your local information and referral centre, the Citizens Advice Bureau located in the Resource House, 68 Main Street in Pakenham.

Your C.A.B. offers information on recreation, child care, pensions, services for the disabled and elderly, help for family, marriage and other personal problems. There are pamphlets and brochures covering these and many other subjects, even a map showing local and surrounding district tourist and picnic attractions. All FREE as are all services at the Citizens Advice Bureau.

Professional help is also available at the Resource Centre by referral. The Welfare Officer is on duty

Monday to Friday from 10am to 4pm. A Financial Counsellor attends on Monday and Thursday to help you with your budget and can sometimes intercede on your behalf with creditors. For folk who can't come during work hours, there is a free Legal Service every second Tuesday from 6.30 - 7.30pm with an attending Solicitor. These services are by appointment only which can be arranged by the Bureau staff.

If you haven't been to the Citizens Advice Bureau, why not call and see for yourself the wide range of information at the Resource Centre, 68 Main Street, Pakenham. We are open from 10am to 3 pm Monday to Friday or you can phone us on 03 59 412 377.

150TH. BERWICK SHOW

FEBRUARY 28TH AND MARCH 1ST.

Many Beaconsfield residents attended this year the 150th Berwick Annual Show. Fine mild weather brought out large numbers of people on both days.

St. Francis Xavier School displayed some fine artwork and photographs in the Craft Demo Display shed.

Michelle Mauko of Beaconsfield demonstrated her woodworking skills on the stand of the Berwick & District Wood workers Club.

Kelly Mentiplay, the granddaughter of Ron and Mary McGrath won first prize in the 3-5 year old section of the Miss Showgirl Contest.

Peter Willis' business Beaconsfield Mower and Tractor had a big commercial display stand with a great range of power hand tools for the outdoors, ride on mowers, tractors and other farm vehicles

Tom & Wendy Cantwell of

Guys Hill displayed 3 of their Alpacas, a llama and a donkey at the Animal Nursery building.

Young Liam Revell of Adamson Road showed off his two pet ferrets on the stand of the Victorian Ferret Society. He has had them for two years and enthusiastically cares for them.

Joyce Betheras of Beaconsfield won prizes in the Jams section of the Arts & Crafts Handwork Competition.

Joan Horton represented the 1st Berwick Scout Troop in her uniform. The group held a sausage sizzle stall and was most successful.

The stage was provided by Beaconsfield Timber and Hardware.

Thankyou to the Show society for their co-operation for our press-passes to enable our volunteers to take photographs.



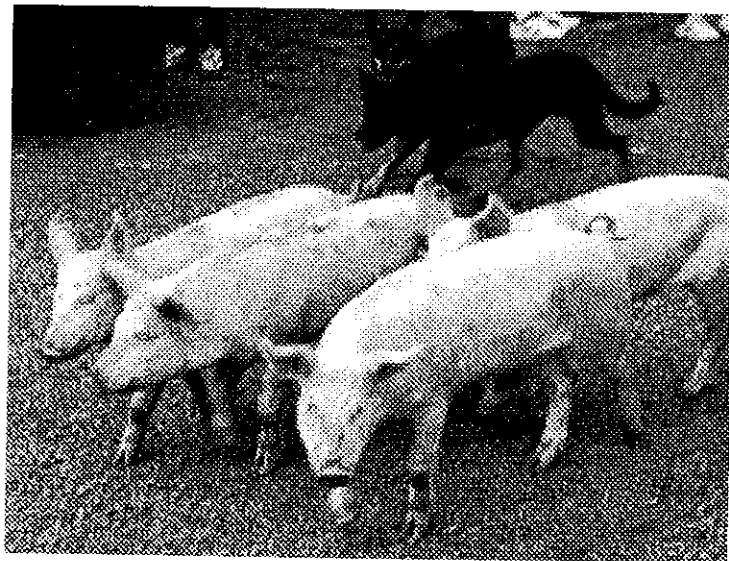
Above:- 1st Place Showgirl, 3-5 years. Kelly Mentiplay whose proud Nana is Mary McGrath of Beaconsfield.

Below:- The Governor of Victoria, Sir James Gobbo, opened the show at 11 am on Saturday 28th February.



Above:- The RAAF Roulettes entertained the crowd at 11.20 am. 'It takes only 6 minutes to come from Sale to Berwick.' And it did. They were flying above us as the M/C spoke.

150TH. BERWICK SHOW FEBRUARY 28TH. AND MARCH 1ST.

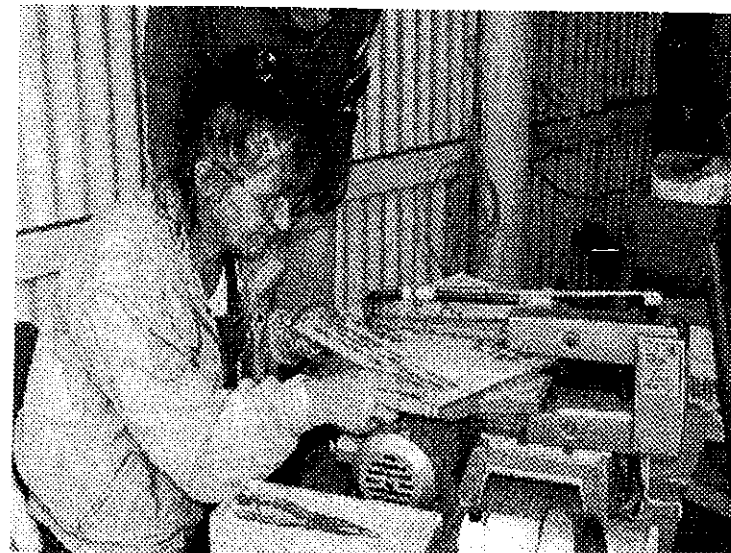


Above:- Jack Bristow's Kelpies rounding up the Pigs.

Below:- Ashley & Jade Fuss on the John Deere Gator, at the display by Beaconsfield Mower and Tractor.



Below:- From Melbourne to Adelaide and return for \$6. This car was built by teachers, students and friends at Casey TAFE. With a 50 cc Honda motor it travels on 169.3 km per litre of fuel.



Above:- Michelle Mauko, our local wood-turner, demonstrated Fretwork, a very complex art.



Above:- Berwick Regional Band on the Stage provided by Beaconsfield Timber and Hardware.

150TH. BERWICK SHOW

Below:- Fiona McKenzie dancing the 'Highland Lilt'.



Below:- Berwick Lions Spinning Wheel, a great fundraiser. Proud winners chose a new pram.



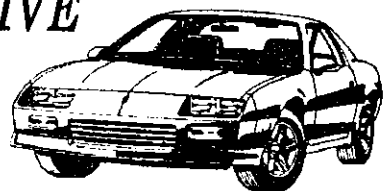
Top and Middle Right:- Vanessa and Renata Boon won 1st. prizes in the children's Craft Displays.

JAZZ AND WRITERS FESTIVAL 1998



Above:- The Jazz and Writers Festival was held at Casey TAFE, on Saturday 21st. March. This was a delightful mix of words and music to entertain allcomers. There was also a huge variety of foods, wines and coffees for purchase.

BEACONSFIELD AUTOMOTIVE SERVICES



Rob Robinson

Qualified Motor Mechanic
Licenced R.W.C. Vehicle Tester
& Repairer

Factory No. 1
94 Princes Hwy.
BEACONSFIELD



Lic Vic Roads
Vehicle Tester

PHONE: 9707 4468

UNDERSTANDING SUPERANNUATION

During the past decade, Governments of both persuasions have been committed to improving Superannuation Benefits for members of the workforce. With a growing population and the expected increase in retired persons in the near future from the "baby boom" post war period, the Government projects massive increases in Social Security Payments to retired persons by way of Age Pensions. To offset the cost of Age Pensions, the Government wants as many people as possible to provide financially for their retirement by accumulation of personal assets and Superannuation Benefits. To encourage Superannuation Benefits, the Government has provided income tax incentives by allowing certain tax deductions, tax rebates and concessional tax on Superannuation Fund income and payments of benefits and pensions from Superannuation Funds.

Some of the principal features of Superannuation and the income tax treatment are, as follows:

- all employers are required to contribute on behalf of employees a minimum of 6% of gross earnings to a complying Superannuation Fund or pay an equivalent amount as a Superannuation Guarantee Charge which can be paid by the employee into a Superannuation Fund. The minimum rate increases progressively to 9% by 1st July 2002.

- tax deductible contributions by employers and self employed persons are usually taxed at 15% when received by the Superannuation Fund which compares favourably with personal tax rates (highest marginal rate of 47%) and company tax (36%). Income earned by

Superannuation Funds is also taxed at 15%.

- a surcharge of up to 15% applies to Superannuation contributions if a persons' taxable income plus Superannuation contributions is greater than \$73,220. Accordingly, salary packaging and careful tax planning is needed to avoid this surcharge (additional tax).

- lump sum taxed payments withdrawn from Superannuation Funds after reaching acceptable retiring age of 55 are concessionally taxed as follows:
0 - \$90,474 Nil tax
Excess of \$90,474 15% tax

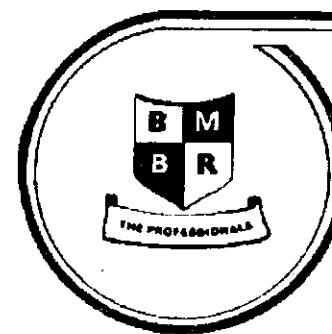
- Pensions and Annuities paid by Superannuation Funds to retired persons will have a tax free portion related to any undeducted Superannuation contributions as enabling recipients to claim a tax rebate of their Pension/ Annuity.

- Consequently a recipient can receive a Pension/ Annuity of approximately \$20,000 p.a. effectively tax-free provided it is fully rebateable at 15%

- a taxpayer may be entitled to a tax rebate of up to \$540 for superannuation contributions made for the benefit of his/her non-working or low-income spouse.

Superannuation is greatly encouraged by the Government to provide funds and income sources for people when they retire and is one of the few areas receiving concessional tax treatment. Everyone should seriously consider the options available to contribute monies to Superannuation for their retirement. Planning for retirement needs to be done earlier rather than later.

GRAEME J. TAYLOR A.C.A.



Berwick Motor Body Repairs

PTY. LTD.

SPECIALISING IN
INSURANCE SMASH REPAIRS
FOR ALL MAJOR INSURANCE COMPANIES

Using Universal Car Bench

Dedicated Jig System

European Paint Baking Oven

24 HOUR TOWING SERVICE

9796 1199

BODY SHOP

5943 2343

PRINCES HIGHWAY
OFFICER, 3809

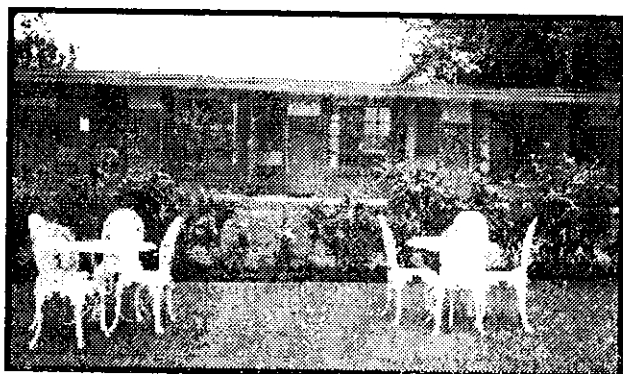
COURTESY CAR AVAILABLE



SELECTED
CRASH
REPAIRER

Beaconsfield Lodge Motel

Stay in one of our new or
completely refurbished
and renovated units



Our 12 units feature double, twin or
queen size beds and a two brm family unit.

Your Hosts: Robin & Kathleen Best



1 Souter St.
Beaconsfield
9707 1454

CHURCH SERVICE TIMES

ANGLICAN:

Berwick. Peel Street
Sunday. 8.00am; 9.30am; 11.15am

Upper Beaconsfield.
Sunday. 9.30am; 7.00pm.

BAPTIST:

Beaconsfield. Old Princes Highway
Sunday. 10.30am; 7.00pm.
Sunday School 9.15am.

CATHOLIC:

Berwick. High Street.
Saturday. 6.00pm
Sunday. 9.00am; 10.30am; 6.00pm.

SALVATION ARMY:

Berwick. Old Anglican Church Church Street
Sunday 10.00am.

UNITING:

Berwick. High Street.
Sunday 10.30am

POETS CORNER

The Show

It's time once again for Berwick's fine show.

So much to see so I think I will go.

Saw so many horses, all sizes and breeds

And all of the riders so proud of their steeds.

Alpacas and donkeys, the ducks and the hens.

All breeds of cattle looked good in their pens.

To Hamsters so fluffy and Ferrets so small,

The miniature horse and the Clydesdales so tall.

So many people all stare at the sky,

And wait for the stunts as the Roulettes fly by.

Arts and crafts and the vintage displays,

while the weather was sunny for two perfect days.

The funfair amusements, the fireworks at night.

A shower of colour, a wonderful sight!

Perhaps you were busy, this year didn't go.

I'm sorry you missed such a wonderful show.

D.S.D. March 1998



BEACONSFIELD SCOUTING

Forty years ago a group of local residents considered that a Scout group would be a good thing for Beaconsfield and thus funds were raised and a hall constructed. The group still meets regularly and greatly benefits youth in our community.

Scouting is a world wide organisation offering the opportunity for young people to take that first step towards a code of living that helps them grow into capable, self reliant individuals. Scouting is an educational organisation. It tries to encourage the physical, mental, social and spiritual development of young people so that they may take a constructive place in society as responsible citizens.

The programs are fun filled and completion of challenges

are rewarded. One of the most sought after prizes in the Scouting movement is the Queen Scout Award. To see on a resume that a young person has gone through Scouting and has achieved this prestigious award is looked on very favourably by prospective employers.

I don't think I have to tell you exactly what fun filled activities are happening in Scouting as an article was placed in last month's Banner. If you didn't get a copy please advise me and I (Chris Burns - Group Leader) will arrange for the information to be made available.

Why not come along and see what we do. It doesn't cost anything to look. Please phone the hall anytime of the day or night on 9707 1871.

ESTATE AGENT OPENS IN BEACONSFIELD

Local man Howard Lister has opened an office in Beaconsfield at shop 1/No. 70, Princes Highway, next to the Video Shop.

Showing confidence in the future of the town and its surrounding area, he will be serving the needs of the local community in regard to homes, vacant land, investment properties and businesses for sale.

Howard has spent some thirty years in the real estate business and is assisted by associate Frank Luck. With a small office and low overheads they are prepared to negotiate on commissions. They currently have investments properties ranging from \$20,000 for one bedroom bed sitters to \$100,000 for bigger homes in areas from here to Traralgon.

They can advise on finance and with their combined

depth of experience and extensive knowledge, will help you find what you are looking for without the pressures and hype associated with some of the large multi-national agents.

They can be contacted at any time on 9707 5777 if their office is not manned.

BEACONSFIELD HAS NEW LAUNDRETTE

Harry Fox has now relocated Berwick Laundrette to shop 7 - 4 Princes Hwy. Beaconsfield.

Phone: 0417355 590

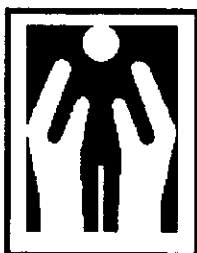
BEACONSFIELD CHIROPRACTIC CLINIC

CHIROPRACTIC is the science of neuro-musculo-skeletal medicine. It deals with the ills and injuries of the body by locating any point of interference or malfunction of the nerves, muscles or joints which may cause pain or symptoms.

CHIROPRACTORS are trained for a full six years at university. This enables the chiropractor as a primary contact practitioner, to appropriately assess a wide range of conditions in all age groups from infants to the elderly. All major health funds and Workcover and TAC cover chiropractic care without referral.

The Department of Veterans Affairs will also cover eligible veterans for their treatment.

AT the **BEACONSFIELD CHIROPRACTIC CLINIC** as well as general and family chiropractic care, we work closely with local sporting clubs for injury management and prevention. We also provide laser therapy and acupuncture.



Dr. Steven Pratt B.App.Sci (Chiro)

Dr. Craig Carter B.App.Sci (Chiro)

Member CAA, Member AAV

16 - 18 Wood Street, Beaconsfield

Tel. (03) 9796 1110

BRICKBATS AND BOUQUETS

Brickbats - to the people who think it's quite okay to steal fruit off people's back yard fruit trees.

SOLDIERS ROAD/ ADAMSON ROAD JUNCTION UPDATE

After several weeks work, the new alignment of Soldiers Road and roundabout at the end of Adamson Road is just about completed.

For residents who have persevered with road dust through many summers past, the improvements are a welcome relief. Sealed thoroughly with bitumen in all directions, signs installed and white lines painted, the area is now very safe for motorists and pedestrians alike.

In addition, a footpath on the west side of Soldiers Road has been formed to make things more pleasant for many people who walk to and from the Railway station. The entrance to the Park is much better and safer.

This whole area is now 100 per cent improved since the dark times without street lighting, the rough times with unmade roads, the rickety old wooden bridge and the open roadside drains.

Bouquets to the City of Casey Council.

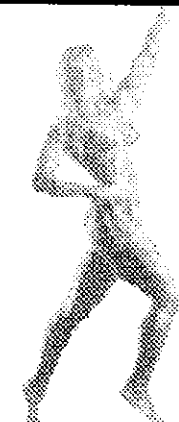
SCOTT HOLDINGS PTY LTD
For prompt, friendly service with

BOBCAT
BACKHOE
TIPPER AND
RETAINER WALLS
TELEPHONE
9707 1685
0412 356385
Stuart Scott

PAYNE RD. BEACONSFIELD

• GET FIT •

LOSE WEIGHT



Sensational Special

12 Months Full Membership

\$295

**NEW EQUIPMENT
NEW CIRCUIT**

OPEN 7 DAYS

BEACONSFIELD SQUASH & FITNESS CENTRE - 9707 2929

29 Wood Street, Beaconsfield

LOSE WEIGHT

If you have a Legal Problem call -

**WOLLERMAN
SHACKLOCK**

BARRISTERS & SOLICITORS

We provide a full range of Legal Services including:

- * Subdivisions * Wills and Probate * Commercial Law
- * Motor Vehicle Accidents * Land Development * Legal Services for Small Businesses
- * Fixed Price Conveyancing - Sales and Purchase * Commercial Law including Traffic Offences
- * 24 Hour Service * Family Law, Adoption and De Facto Spouses

FIRST FLOOR, 8 GLOUCESTER AVENUE, BERWICK
Telephone: 9707 1155, Facsimile 9707 4834

THE STEERING JOINT

WE AIM TO BE THE BEST AT WHAT WE DO

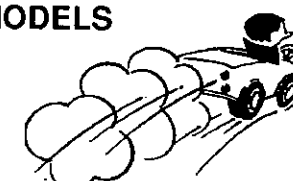
BECAUSE YOUR CAR DESERVES PEOPLE WHO CARE

- ★ **FULL MECHANICAL REPAIRS**
- ★ **SERVICING OF ALL MAKES & MODELS**
- ★ **ELECTRONIC TUNING**
- ★ **BREAK & CLUTCH REPAIRS**
- ★ **FRONT END REPAIRS**
- ★ **WHEEL ALIGNMENT**
- ★ **WHEEL BALANCING ON & OFF CAR**

FREE PICK UP & DELIVERY LOCAL AREA

EVERY VEHICLE SERVICED AT
THE STEERING JOINT
IS DETAILED FREE! OF CHARGE
YOUR CAR WILL LOOK AND FEEL GREAT

ALL WORK GUARANTEED



**FREE
NO OBLIGATION
QUOTES**
**12 WOOD STREET
BEACONSFIELD
PHONE 9707 3393**

BEACY'S NOTICE BOARD**GRAEME TAYLOR A.C.A.
CHARTERED ACCOUNTANT**

- * Registered Tax Agent (E.L.S. Facilities)
- * Registered Company Auditor
- * Thirty years professional experience

Providing personalised financial, taxation, management accounting, auditing, superannuation and corporate secretarial services.

Appointments at Oakleigh or Beaconsfield
Okey Stopp & Taylor 9569 7516

THE BACK VERANDAH



ANTIQUE FURNITURE RESTORATION FRENCH POLISHING WOOD TURNING GENERAL REPAIRS

ROB & ANNETTE PH: (03) 5943 2526 ALL HOURS
MOBILE: 041 758 8908

KEVIN SHEEAN**Masseur**

RELAXATION, SPORTS & REMEDIAL
AROMATHERAPY STEAM TUBE
BY APPOINTMENT ONLY
9707 2288

**TYREPOWER**

RAY LAWN
Proprietor

BERWICK TYREPOWER
Enterprise Ave., Berwick, Vic. 3806
Tel 9707 3177 Fax: 9796 1836

**LANDSCAPING / ROTARY HOEING
GRASS SLASHING / LAWN MOWING**

- * Large and Small areas catered for
- * Grass pick-up or evenly scattered

Phone Graham
9796 1297 or 0418 563 456

ELECTRICAL CONTRACTOR

Domestic, Commercial,
Industrial
installations and repairs

PETER STEELE - R.E.C. 8772

Phone 9707 4906
Mobile 0418 392 370
23 Hudson Street, Beaconsfield.

J. M. STEERE
PAINTING & DECORATING
SERVICES PTY LTD

Master Painter & Decorator

Phone: 015 316 976

HUGE RANGE OF QUALITY CRAFT MATERIALS

- * Fun Packs with easy to follow Idea sheets
- * Hard to find items, Matchsticks, wiggly eyes, craft punches
- * Card Making Supplies, Rubber Stamps & Accessories

Demonstrations or individual Orders Benefit from our hostess gifts
Crafty Kids is for all kids at heart,
Ages 3 to 103

Consultant ID 1228: Margaret Boon 9707 5053

BEACY'S NOTICE BOARD**WINDOW CLEANING**

Domestic & Commercial

JOHN PLOWMAN

17 Years Experience

5944 3969

MELALEUCA LODGE
CNR BRUNT RD., PRINCES HIGHWAY



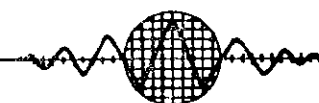
Modern accommodation
including deluxe spa units

Wedding Receptions
Conferences
Functions

Contact Neilma or Graeme
for Inspections or Bookings **9796 1044**

**MODEL TECH &
ELECTRONIC SERVICE**

TELEVISION, VIDEO, Hi-Fi, VIDEO CAMERA &
MICROWAVE OVEN REPAIRS ♦ HOBBY SUPPLIES
ANTENNA & SATELLITE DISH INSTALLATION



Shop 1, No 4 Princes Hwy Beaconsfield,
Ph: 9768 9191 Mob: 015 568 499
Prop, Barry Nugent



Nathan Feldman
B. Sc. (Monash) B. App. (Physio)

Vincent Chan
B. App. Sc. (Physio.), M.A.P.A.
Grad. Dip. in
Exercise For Rehabilitation
Physiotherapist

**BEACONSFIELD
PHYSIOTHERAPY
CLINIC**

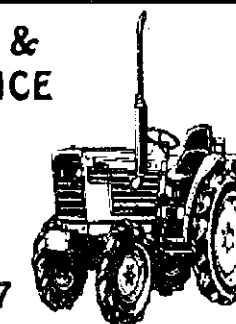
46-50 Princes Highway
Beaconsfield 3807

PH: 9796 2833
AH: 018 538 198

Dr. Robert A. Panjkov
B. D. Sc. (Melb.)

DENTIST

Unit 4 87 Wood Street
Beaconsfield 3807

Ph. 9707 3508
**GRASS SLASHING &
FARM MAINTENANCE**


Bryan Park
Phone: 9707 2007
Mobile 0411 402 110
FREE QUOTES

ACACIA RISE ALPACA FARM

Phone 9707 5589 / Fax 9768 9100

**Kaye Chapman**

'Breeders of Beautiful Black'

P O Box 173 Beaconsfield
Vic 3807

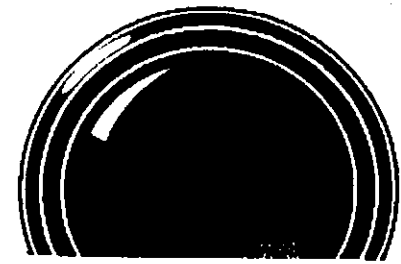
**ALLIED BUILDING
SERVICES**


BUILDING ADVICE
BUILDING CONSULTANTS

BUILDING PERMITS

76 Main Street,
PAKENHAM 3810
Telephone 5941 4355 Fax 5941 4400

Proprietor Bushy Miles



PAUL COHEN PHOTOGRAPHY

Commercial
Weddings
Portraits
Sports

Copy Photos B/W
B/W Dev & Printing

16 Lyle Avenue
Beaconsfield 3807
Tele: 9707 2480
Mob: 0419 004 612



When it comes
to selling
your home
ring **John Martin**
at **Ray White**
Berwick

- ✓ Free Market Appraisals
- ✓ No Sale - No Charge
- ✓ Full Colour Advertising
- ✓ Friendly and Efficient service
- ✓ Free Garage Sale Signs

Ray White™

BERWICK

9 Clyde Road (p.o. Box 473) Berwick
Call John Martin on
9796 2666 or Mob. 0418 359 458
fax (03) 9796 2366

SOLD

BEACONSFIELD TENNIS CLUB NEWS

By Margaret Chatfield



Above:- Margaret Chatfield

JUNIOR CLUB CHAMPIONSHIP FINALISTS 1998

Another successful Junior Club Championship was held during March. Singles A Grade Winner Boys - Daniel Kozaris, Runner Up - Darren Cordy Winner Girls - Melissa Eckersley, Runner Up Kelly Kozaris Singles B Grade Winner Boys - Steven Watson, Runner Up Stan Haritou Winner Girls - Kate Somers, Runner Up - Tessila Beattie Doubles A Grade Unisex Winners - Daniel Kozaris & Drew Clarke, Runners Up - Scot McPherson & Darren Cordy. Doubles B Grade Unisex Winners - Kelly Kozaris & Dale Vincent, Runners up - Steven Watson & Andrew Chudleigh. Doubles C Grade Unisex Winners - Kylie Varty and Sarah Buchanan, Runners-up - Kate Somers & Madeleine Tate.

SATURDAY MORNING JUNIORS

Beaconsfield Juniors did very well once again in the Summer Season. Eight out of thirteen teams made it to the finals.

Premiers - 'Section 2'. Team members - Dean Hore,

Warren Pearson, Peter Burns, Abe Roper, Matthew Lucas. Premiers - 'Section 7'. Team members - Tim Robertson, Matthew Taylor, Steven Watson, Matthew O'Connor, Andrew Chudleigh. Premiers 'Section 15'. Team members - Kate Somers, Madeleine Tate, Kylie Varty, Elise Kearsley, Sarah Buchanan, Stephanie Beattie.

SATURDAY AFTERNOON SENIORS.

Ladies Rubbers/sets 'B1' Waverley & District Association. Premiers 'B1' Team members- Dawn Snelson, Nola Shanks, Ann Phillips, Nancy Nouza, Lyn Day.

BAG COMMITTEE CLOVER COTTAGE LUNCHEON.

Come along or with friends and make up a table and have an enjoyable relaxing lunch together. Wednesday 24th June, 12o'clock. Cost \$30.00 per person. Door prizes and raffle to be drawn on the day. For bookings contact Margaret Chatfield on 9707 2016 or Fiona Clacy on 0359 413 200.

NIGHT TENNIS COMPETITION

Tuesday Night Unisex - Beginners to 'B' Grade. New comp starts Tuesday 28th April Enquiries contact Margaret Chatfield on 9707 2016. Tuesday Night Mens - A & B Grades. new comp starts Thursday 30th April. Enquiries contact Ian Craig on 9707 4507.

Court Hire contact Margaret Chatfield on 9707 2016

WATER SUPPLY TURNED OFF

The 5 hour interruption to the water supply in Beaconsfield on 18/3/98 was caused by a burst pipe opposite the Community Centre in Beaconsfield Avenue.

Mr. Doug Stuart of South East Water said that the stop

valve to cut supply to Beaconsfield Avenue only, could not be located so all water north of the Railway line was turned off.

On Friday 20th March South East Water located the missing stop valve.

BEACONSFIELD FOOTBALL CLUB 'ON THE MOVE'

No sooner had the 1997 season finished then preparation started for the 1998 season.

With John Airdrie - President and Merv Hinneberg - Secretary, the club with its 20 member committee held a Strategic Planning Weekend at Melaleuca Lodge for the forth coming season.

Geoff Ablett of Footballs famous Ablett family has been appointed Beaconsfield's Senior Coach and AFL's record games holder Michael Tuck as Chairman of Selectors.

Geoff and Michael between them bring a wealth of knowledge and experience to Beaconsfield.

Other coaching appointments are Anthony Veltmeyer (Reserves), Peter Goodes (U. 17's), Craig Jolliffe (U.15's).

Another major appointment is former Richmond Ruckman Ty Esler as Assistant Coach. At 203cm tall he will provide height and strength and authority.

Pre-season training has been rigorous and included and two day camp at Labertouche. Gary Ablett turned up to a

recent training session and ran with the players creating much interest.

Other hard work at the Club included improvements to the Training and Umpires Rooms. More has been planned. For membership enquiries and sponsorship options, contact should be made with the Secretary on 9707 4508 or direct to the club rooms on 9707 1707.

The Club looks forward to an exciting and successful season.

BIRTH NOTICE

Congratulations to Robin & Trevor Butler on the safe arrival of Renae Michelle Butler. Born 12.3.98. A sister for Rhys and Adam.

FOR SALE

One big Galah cage, vacant possession, 'Freehold' with perch, feed can and watering can. Good home for any active feathered friend. Going Cheeep .. only \$50. Originally cost \$95. not so long ago. Phone now. 9707 1313



EMPLOYMENT

OCCASIONAL CARE ASSISTANT

Location: Beaconsfield Community Centre Days: Tuesday afternoon and Thursday morning. Hours: 3 hours per session Pay : Casual rate as per award. Qualified or childcare experienced person required, to join a team of childcare staff to care for children 3 months to 5 years old. Written applications by 11/5/98: to The Secretary, P.O. Box 2, Beaconsfield, 3807.

**CLOSING DATE FOR
NEXT BANNER IS
19th. MAY 1998**

PREMIERSHIPS FOR CRICKET TEAMS

Three Beaconsfield cricket teams capped off the 1997/98 season by winning premierships in the W.G.C.A.

In the A grade Final Beaconsfield defeated Kooweerup on the first innings by 30 runs in an exiting and eventful game to become Premiers, while the Under 16 North team defeated Nar Nar Goon on the first innings by 62 runs to claim the title of Premiers.

Not to be out done the Under 14 North team defeated Nar Nar Goon on the first innings

by 10 runs to claim their premiership. This made it two in row.

Commiserations to the Beaconsfield B Grade team who became B Grade runner-ups and losing to Devon Meadows on the first innings by 5 runs.

Congratulations go to Beaconsfield A Grade Glenn Marinic who won the W.G.C.A. 1997/98 Player of the Year.

The President Stephen Kearn thanks all Committee

members, players, supporters for what was a tremendous season for Beaconsfield. The club pays particular thanks to all its sponsors and looks forward to a continuing relationship next season.

Like to advertise in Beacy's own paper "THE BANNER"

Fill in the form and leave it at the Post Office.
Name of Advertiser.....

Phone Number.....

Address to which account is to be sent.....

Message.....

Rates for advertising:
1/4 page in a single issue \$30.
1/2 page in a single issue \$55.
Full page in a single issue \$90.

All above rates 10% discount if paid in advance.

Beacy's Notice Board \$12.50 per issue
Market Place \$1 per line per issue.

BEACIE SERVICE CENTRE

SERVICING & MECHANICAL REPAIRS TO
ALL TYPES OF VEHICLES INCLUDING:



- * 4x4 & Light Commercial
- * Tune-Ups
- * Brake & Clutch
- * Front End Work
- * Exhaust Systems
- * Transmissions
- * Motors

Licensed Roadworthy
Tester



Lic Vic Roads
Vehicle Tester

Contact Gary or
Ross

BEACIE SERVICE CENTRE

122 PRINCES HIGHWAY BEACONSFIELD

MAJOR & MINOR WORK

- All Guaranteed -

9796 1401

BEACONSFIELD VIDEO LIBRARY

PH:9796-1041

OPEN EVERY DAY

12NOON-9PM



JODIE FOSTER
MATTHEW McCONAUGHEY

CONTACT

© 1997 Warner Bros. (M) 15+



FREE WILLY 3 THE RESCUE

© 1997 Warner Bros., Monarchy Enterprises B.V. and Regency Entertainment (USA), Inc. PG

**AVAILABLE
EARLY APRIL**

"Wickedly funny - the best comedy of the year"
MOVIE SCENE



**AVAILABLE
MID APRIL**



LATE APRIL

**1/2 PRICE ON
ALL OVERNIGHT VIDEO'S
MONDAY TO WEDNESDAY
(EXCLUDING PUBLIC HOLIDAYS)**

**ALSO AVAILABLE TO RENT
VIDEO PLAYERS
GAME MACHINES
GAMES FOR ALL SYSTEMS**

**WEEKLY SPECIAL
ANY 3 WEEKLYS FOR \$5
ANY 6 WEEKLYS FOR \$10**